

CONTINUING PROFESSIONAL EDUCATION CREDIT

STATEMENT OF OBJECTIVES

The Scientific Meetings of the American Psychoanalytic Association are intended for the continuing education of the members and other registrants and include several individual teaching programs. A series of panels and special lectures presents new research in clinical and theoretical topics. Specific workshops ranging from single afternoons to 2-day workshops explore in detail the knowledge of a particular clinical or research area. Scientific papers are presented and discussed, each of which has been carefully reviewed by the Program Committee. A series of special seminars is presented to provide interdisciplinary education on topics of importance to psychoanalysis.

CONTINUING PROFESSIONAL EDUCATION CREDITS

Physicians

The American Psychoanalytic Association is accredited by the Accreditation Council for Continuing Medical Education to provide continuing medical education for physicians and takes full responsibility for the content, quality, and scientific integrity of this CME activity.

The American Psychoanalytic Association designates this educational activity for a maximum of 37.5 hours in category 1 credit toward the AMA Physician's Recognition Award. Each physician should claim only those credits that he/she actually spent in the activity.

Psychologists

The American Psychoanalytic Association is approved by the American Psychological Association to sponsor continuing education for psychologists. The American Psychoanalytic Association maintains responsibility for the program.

MCEP Credits for California Psychologists

The California Psychological Association Accrediting Agency accepts credits earned from American Psychological Association-approved sponsors (the American Psychoanalytic Association is an APA-approved sponsor). California-licensed psychologists are, however, required to directly report the courses they have taken with APA sponsors. For information about the MCEP Credit Reporting Form, go to the web site at www.calpsychlink.org then click on the Accrediting Agency button.

National Association of Social Workers (NASW)

The American Psychoanalytic Association's 2010 National Meeting is approved by the National Association of Social Workers (Provider # 886504845) for 37.5 continuing education contact hours.

Exceptions to NASW

Please be aware that the following state boards do not accept the NASW National CE Approval Program. Please see the details below for approval of continuing education credits for social workers in these states.

California Board of Behavioral Sciences

The American Psychoanalytic Association's 2010 National Meeting meets the qualifications for 37.5 hours of continuing education credit for MFTs and/or LCSWs as required by the California Board of Behavioral Sciences (Provider # 4394).

Michigan Department of Community Health, Licensing Division (MDCH)

Michigan social workers should use approval by the California board to obtain credit from the Michigan Board of Social Work. The following written statement, with the provider number, is required by the Michigan Board for documentation. "The American Psychoanalytic Association's 2010 National Meeting meets the qualifications for 37.5 hours of continuing education credit for MFTs and/or LCSWs as required by the California Board of Behavioral Sciences (Provider # 4394)."

North Carolina Social Work Certification and Licensure Board (NCSWCLB)

The Board does not require pre-approval of organized training events attended by the social worker. However, the continuing education activity of social workers is subject to audit. Although CEU or attendance certificates should not be attached to the recertification affidavit, social workers will need to be able to provide upon request by the Board, verifiable proof of attendance and credit hours. North Carolina social workers should submit contact hours to the State Board for post approval.

The State of Ohio Counselor, Social Worker, and Marriage and Family Therapist Board

To document attendance for programs that were not pre-approved, social workers must complete a post program approval form and attach a copy of their attendance certificates and a brochure to the post program approval form. Post approval forms should be submitted within ninety days of completion of the program and prior to your renewal date.

State of West Virginia Board of Social Work Examiners (WVBSWE)

Note: WVBSWE does NOT participate in the NASW's National CE Approval Program.

West Virginia social workers should submit contact hours to the State Board for post-meeting approval.

IMPORTANT DISCLOSURE INFORMATION FOR ALL LEARNERS:

None of the planners and presenters of this CME program have any relevant financial relationships to disclose.

On the Cover

Washingtonians herald the departure of winter when the world-famous cherry blossoms cast their characteristic pink petals over the Tidal Basin (photo: Jake McGuire). In the distance is the Thomas Jefferson Memorial, modeled after the Pantheon of Rome. The Thomas Jefferson Memorial is located on the south bank of the Tidal Basin and is open daily from 8:00 am until 11:45 pm every day except Christmas Day. For more information call 202-426-6841. There are no fees to visit the Memorial. *Metro stop: Smithsonian*

WELCOME TO THE 99TH ANNUAL MEETING



Dear Colleague:

Welcome to the American Psychoanalytic Association's 99th Annual Meeting. I know you will enjoy the stimulating scientific program, networking opportunities, social events and the pleasures of Washington, D.C. in late spring. I am going to highlight just a few of the intellectual riches — and fun events — at this meeting.

As an old fan of the defunct Washington Senators. I've had to get used to the idea that D.C has a new baseball team, the Washington Nationals. This year's meeting features a very special discussion group with the President of the Nationals, followed by a private tour of Nationals Park.

For a different kind of tour, head to the Library of Congress on Friday to look at a special exhibit arranged by member Dr. Harold Blum to commemorate the 100th anniversary of APsaA (2011) and the IPA (2010). The exhibit includes home movies of Sigmund Freud.

Dr. Vamik Volkan explores large group dynamics and psychoanalytically informed diplomacy in his plenary address. King Lear goes on the couch in the University Forum.

This year's program features new discussion groups on Self Psychology (with Paul and Anna Ornstein), psychotherapy within the psychoanalytic profession, the work of Paul Gray and more. "Old classics" among the discussion groups include sessions on dissociative disorders, impasses in psychoanalysis, and psychoanalysis and film among many other interesting topics.

A symposium on psychoanalysis and space includes a geographer, a sociologist and a professor of international relations among its speakers.

Did you notice the number in my opening sentence? There is something very moving to me about the idea that psychoanalysts in America have been gathering together each year to learn and discuss and sometimes squabble a bit for *ninety-nine* years. This year's program, which demonstrates the reach of psychoanalysis not just within clinical treatment, but broadly to aspects of human affairs ranging from economics and literature to neuroscience and spirituality, does justice to that tradition.

Warm regards,

Prudence Gourguechon, M.D.
President

TABLE OF CONTENTS

Exhibitors and Confidentiality	2
General Information	4
Registration & Exhibit Hours	5
Daily Schedule	6-31
Tuesday	6
Wednesday	6
Thursday	13
Friday	24
Saturday	28
Sunday	31
A Glossary to the Scientific Program and Meeting Registration	32
APsaA Officers, Program Committee and Staff	33
Program Participants	34-35

SOCIAL EVENTS

WEDNESDAY, JUNE 9, 2010

7:15 p.m.-8:30 p.m.

Reception to Welcome Lesbian, Gay, Bisexual, and Transgender Participants
(see page 13)

THURSDAY, JUNE 10, 2010

7:45 a.m.-8:15 a.m.

Breakfast Gathering for Affiliate Members and Candidates (see page 13)

12:30 p.m.

Candidate Dutch Treat Lunch (see page 17)

7:05 p.m.

Baseball Game and Tour of Washington Nationals Baseball Park (see page 24)

7:15 p.m.-8:15 p.m.

Reception for Psychiatric Residents, Psychology, Social Work Students, and Student/Resident Associates (see page 24)

FRIDAY, JUNE 11, 2010

11:00 a.m.-3:00 p.m.

Library of Congress: Freud Archives
(see page 25)

6:45 p.m.-8:30 p.m.

Gertrude and Ernst Ticho Memorial Lecture Reception (see page 28)

The American Psychoanalytic Association's
99th Annual Meeting is hosted by the
Washington Center for Psychoanalysis

CONFIDENTIALITY

Confidentiality is of the utmost importance to APsaA and we would like to remind you about a few key issues concerning confidentiality at the Meeting:

- Material presented in all sessions must not be written about or discussed outside the group itself in the service of protecting confidentiality of any patient discussion.
- Use appropriate disguise and/or informed consent when talking about a patient. Even when demographic variables have been changed, specific details included in clinical material can reveal a patient's identity to those who know him and should be avoided where possible.

- If a registrant attends a session in which clinical material is being presented and discussed and the registrant thinks that they recognize the identity of the patient, they should protect the patient's confidentiality by quietly excusing themselves from the remainder of that session.
- Special care must be taken to avoid conversations about clinical material in halls and elevators.
- Emails and internet postings about the clinical material should be absolutely avoided.

*Henry F. Smith, M.D.
Chair, Program Committee*

Attendance at APsaA's meetings are dependent upon the participant's agreement to maintain this confidentiality. We're sure you can appreciate the importance of this issue and we thank you for your cooperation.

99TH ANNUAL MEETING EXHIBITORS

Association Book Exhibits

9423 Old Mount Vernon Road
Alexandria, VA 22309
Phone: (703) 619-5030
www.bookexhibit.com

Frenkel and Company, Inc.

101 Hudson Street
Jersey City, NJ 07302
Toll Free: (800) 373-6535
www.frenkel.com

Jason Aronson/Lexington Books

4501 Forbes Blvd, Ste 200
Lanham, MD 20706
Toll Free: (800) 462-6420
www.rlpgbooks.com

Mental Health Resources

44 West Bridge Street
Catskill, NY 12414
Toll Free: (877) 647-0202

Psychoanalytic Electronic Publishing

Phone/Fax: (949) 496-7379
www.p-e-p.org

Routledge Journals

325 Chestnut Street, Ste 800
Philadelphia, PA 19106
www.taylorandfrancis.com

SAGE Publications

2455 Teller Road
Thousand Oaks, CA 91320
Toll Free: (800) 818-7243
www.sagepub.com

Wiley-Blackwell

350 Main Street
Malden, MA 02148
www.wiley.com/wiley-blackwell

LOCAL ARRANGEMENTS COMMITTEE

A very special thank you to the following members of the Local Arrangements Committee who helped with promotion, outreach, social events and hospitality.

R. Curtis Bristol, M.D.

Jonathan Halperin

Marc S. Levine, M.D.

Danille S. Drake, Ph.D.

David I. Joseph, M.D.

Tarpley M. Long, M.S.W.

Joanne M. Gold, M.A., MA.ED, M.S.W.

James H. Kleiger, Psy.D., ABPP

Christie M. Platt, Ph.D.

Herbert S. Gross, M.D.

Linda S. Kolodner, M.S.W.

Georgia M. Royalty, Ph.D.

The American Psychoanalytic Association would also like to thank the collaborative efforts of The Baltimore-Washington Center for Psychoanalysis and The Washington Center for Psychoanalysis. Each contributed funds and members for the Local Arrangements Committee.



Welcome

To Washington, DC

*The American Psychoanalytic Association
99th Annual Meeting*

June 9 - 13, 2010

As Mayor of the District of Columbia, it is my pleasure to welcome the American Psychoanalytic Association to Washington, DC, on the occasion of your 99th Annual Meeting.



This meeting provides an opportunity to bring together individuals to hear panels, speeches, and participate in clinical workshops on mental health topics. As you gather to reflect on your past accomplishments, I extend an invitation for you to enjoy and visit the monuments, museums, diverse neighborhoods and dine in our fine restaurants.

On behalf of the residents of the District of Columbia, you have my best wishes for an enjoyable and productive event.


Adrian M. Fenty
Mayor, District of Columbia

GENERAL INFORMATION

Renaissance Washington DC Downtown Hotel



999 Ninth Street NW
Washington, DC 20001
202-898-9000 (Main Hotel)

WELCOME NEWCOMERS!

We're glad you're here.

Feel free to stop an APsaA staff member during the conference if you have any questions. You can easily recognize us by the red ribbon we will be wearing on our name badge.

What does it mean when a session is marked "Closed"?

It means that during pre-registration, the maximum enrollment was reached for that particular session and walk-ins are not allowed. **The more popular sessions will reach room capacity quickly and you may wish to plan for an alternative.**

There is no on-site registration for sessions. If a session is not marked closed, you may attend if there are seats available. We ask that you be respectful to those people who pre-registered and allow them to take their seats first. If there are seats still available, then you can attend.

Are you wearing your badge?

Name badges are required to attend all sections of the Scientific Program.

Your badge is your passport to attend the Program sessions and the only way we can tell you have registered for the Meeting.

Badges must be worn in plain sight to gain access to APsaA's Meeting. Individuals who are not wearing their name badge or not wearing the correct name badge will be asked to properly register for the Meeting.

FUTURE MEETING DATES

2011 National Meeting

January 12-16, 2011
Waldorf Astoria Hotel
New York, NY

100th Annual Meeting

June 8-12, 2011
San Francisco, CA
The Palace Hotel

REGISTRATION & EXHIBITS

Registration will be located on the *Ballroom Level*.
Exhibits will be located on the *Meeting Room Level*.

Wednesday, June 9

Registration 8:30 a.m.-5:00 p.m.
Exhibits 1:00 p.m.-5:00 p.m.

Thursday, June 10

Registration & Exhibits 8:30 a.m.-5:00 p.m.

Friday, June 11

Registration & Exhibits 8:30 a.m.-5:15 p.m.

Saturday, June 12

Registration & Exhibits 8:30 a.m.-5:00 p.m.

Sunday, June 13

Registration & Exhibits 8:30 a.m.-12:15 p.m.

Headquarters and Press Room:

Meeting Planner Office B on the Ballroom Level

CALLING ALL EDUCATORS, PSYCHOTHERAPISTS, RESEARCHERS, STUDENTS, RESIDENTS, AND NEWCOMERS!

What are the Associates programs? Consider joining now!



Who's eligible? Psychoanalytic psychotherapists with a minimum of a master's degree and who are licensed by the state in which they practice.

Need more information? For additional activities during the meeting, contact:

Carol Reichenthal, Ph.D., Chair,
Committee on Psychotherapist Associates
(617) 492-7949; carolreichenthal@verizon.net
or Mae E. Kastor, MSW, Co-chair,
(410) 276-5815; maekastor@gmail.com



Who's eligible? Research scientists, research-oriented clinicians, and others interested in psychoanalytically oriented research.

Need more information? For additional activities during the meeting, contact:

Wilma S. Bucci, Ph.D.,
Chair, Committee on Research Associates (RAAPA)
(631) 421-2434; wbucci@optonline.net
or John H. Porcerelli, Ph.D., Co-chair
(248) 646-1267; jporcer@med.wayne.edu



Who's eligible? Medical students, psychiatric residents, psychology, social work, graduate and undergraduate students of all academic disciplines.

Need more information? For additional activities during the meeting, contact:

Joanna Bettmann, Ph.D., LCSW
Co-chair, Committee on Student/Resident Associates
(801) 587-7600; joanna.bettmann@socwk.utah.edu
Anna Yusim, M.D.
Co-chair, Committee on Student/Resident Associates
(203) 704-0274; anna.yusin@nyumc.org



Who's eligible? Teachers and administrators at all levels of education, from pre-school through university, who are interested in the integration of psychoanalytic principles into their teaching and scholarship.

Need more information? For additional activities during the meeting, contact:

Tillie Garfinkel, M.Ed.
Chair, Liaisons to Schools Committee
(301) 384-4513; til.g@comcast.net

*How do I enroll?**

Enrollment Forms are available online at: www.apsa.org/Associates

(click on Associate Programs under Membership)

and at the display tables near the Registration Desk and/or call 212-752-0450, ext. 18 for further assistance.

**Individuals who meet the qualifications for Affiliate and Active Membership in APsA are not eligible to join the Associates program.*

DAILY SCHEDULE

TUESDAY, JUNE 8, 2010

9:00 a.m.-12:00 noon

Committee Sponsored Workshop: The COCAA Sponsored Workshop: Boundary Violations: Ethics Considerations for Child and Adolescent Analysts Part II — Some Practical Approaches to Work with Children and their Parents

Chairs: Ruth Karush, M.D. (New York, NY)
Charles Parks, Ph.D. (Bethesda, MD)

Co-chair: Susan Donner, M.D.
(Woodland Hills, CA)

Presenters: Paula G. Atkeson, Ph.D.
(Washington, DC)
Anita G. Schmukler, D.O.
(Wynnewood, PA)

The child analyst works with unique ethical and boundary issues, of which surprisingly little has been addressed in our literature. The distinctions between boundary crossing, boundary intrusion and boundary violation will be examined. In this context, we will offer some case vignettes for in depth discussion as well as practical solutions for problematic clinical situations. This is an open workshop and we hope that all who work with children and adolescents as well as those involved in the education of child analysts will attend.

9:00 a.m.-3:00 p.m.

Administrative Meeting: Association of Administrators Meeting

This meeting is open to Administrators of APsaA's Accredited Training Institutes, Centers and Affiliated Societies and Study Groups.

2:00 p.m.-4:30 p.m.

Committee Sponsored Workshop: Directors of Institutes and Education Committee Chairs Workshop: The New Principles and Standards for Education in Psychoanalysis

Chairs: Elizabeth Brett, Ph.D. (Woodbridge, CT)
Daniel H. Jacobs, M.D. (Brookline, MA)

Since January 2010, the Education Standards Revision Task Forces have rewritten the Principles and Standards for Education in Psychoanalysis based on their joint proposal for educational changes at the BOPS winter meeting. This workshop will discuss their revision of the Principles and Standards document.

WEDNESDAY, JUNE 9, 2010



8:00 a.m.-5:00 p.m.

Administrative Meeting: Board on Professional Standards

APsaA's Board on Professional Standards (BOPS) is responsible for establishing and maintaining standards for psychoanalytic education and clinical training in APsaA-approved psychoanalytic training institutes. BOPS consists of two representatives from each Approved or Provisionally Approved Training Institute and one representative from each Approved or Provisionally Approved New Training Facility for the teaching of psychoanalysis recognized by this Association.

The Board on Professional Standards meeting is open to any member of the Association except when there is a need for BOPS to be in executive session.

9:00 a.m.-11:30 a.m.

Discussion Group 1: Psychoanalytic Family Therapy  

Chair: David E Scharff, M.D.
(Chevy Chase, MD)

Co-chair & Presenter: Jill Savege Scharff, M.D.
(Chevy Chase, MD)

This discussion group will illustrate the process of applying psychoanalytic principles drawn from object relations theory to families and couples. The session will focus on a clinical illustration, probably by using a video example of one or more sessions, and will feature in depth discussion of the issues raised with the specific case presented as well as the theoretical implications for the conduct both of family therapy and of individual psychoanalytic therapeutic practice. We will discuss theoretical issues along with the clinical exploration.

After attending this session, participants should be able to identify the main components of psychoanalytic therapy with couples and families; compare these to individual psychoanalysis; develop an assessment plan for work with couples and families; understand the role of play in seeing families of young children; or understand the role of evaluating interaction in couple therapy; formulate elements of unconscious structure in conjoint therapy; understand or improve capacity in psychoanalytic therapy of couples or families.

DAILY SCHEDULE

9:00 a.m.-11:30 a.m. (continued)

Discussion Group 2: On Being

Supervised **CEC** **CND** **PSYT**

Chair: Hilli Dagon-Clark, Psy.D.
(New York, NY)

Presenter: Phoebe A. Cirio, M.S.W., LCSW
(Saint Louis, MO)

Discussant: Judy L. Kantrowitz, Ph.D.
(Brookline, MA)

This ongoing discussion group, intended for candidates and members alike, will continue to focus on the essential training experience of supervision — this time concentrating on the importance of the supervisor's attention to the supervisee's countertransference and its influence on the case. Dr. Judy Kantrowitz, renowned for her writing on supervision, will be our distinguished guest analyst. She will elucidate the importance of countertransference work in supervision, and discuss dilemmas that arise and various approaches to addressing them. A presentation of a supervisory experience highlighting countertransference will be offered and participants are highly encouraged to bring examples from their own supervisory experiences.

After attending this session, participants will be better able to recognize the influence of countertransference within a patient-analyst dyad and the importance of defining and critically thinking about it in a supervisory hour. Through a case presentation they will better detect the presence countertransference and learn effective methods of intervention from a supervisory position.

Discussion Group 3: Psychoanalysis and Spirituality: Working on a Dream **CEC**

Chair: Paula J. Hamm, M.A., L.P.C.
(Centreville, VA)

Presenter: Bernard W. Bail, M.D. (Beverly Hills, CA)

Discussant: Richard Waugaman, M.D.
(Chevy Chase, MD)

Dreams have inspired musicians, poets, artist and prophets since the beginning of time. This discussion group will highlight the spiritual content found in dreams. Dr. Bernard Bail, MD, author of "Irmgard's Flute" will present dreaming, as the journey of awakening to one's deepest potential. Dr. Bails Holistic analytic practice includes body, mind and spirit and will present clinical material for discussion. For his WWII service Dr. Bail received nineteen medals including the Distinguished Service Cross and the highest military honor bestowed by France, the French Legion of Honor. Dr. Richard Waugaman, M.D. will be the discussant.

After attending this discussion group participants will be able to better understand that spiritual maturity is deeply grounded in the working through of one's own unique nature.

Pre-registration is required to receive reading material prior to the June meeting for this discussion group.

Discussion Group 4: Writing and Interviewing For Certification: Presentation of a Psychoanalytic Case and Discussion with Members of the Certification Examination Committee **CEC** **CND**

Chair: Paul C. Holinger, M.D. (Chicago, IL)

Co-chair: Karen M. Johnson, M.D. (Palo Alto, CA)

Members of the Certification Examination Committee (CEC) and participants will discuss a written case together. Participants will observe how the CEC functions and will also participate as committee members in discussing the case. Participants are encouraged to ask the CEC members whatever questions they might have about case write-ups, the interviews, and the workings of the Committee.

After attending this session, participants should have a better understanding of how to write-up their cases to submit to the Certification Examination Committee (CEC); they will also have a better understanding of the interview process and the functioning of the CEC.

9:00 a.m.-12:00 noon

Senior Analyst Presentation Program

(Part 1) **CEC** **CND**

Please Note: This program is open to candidates, affiliates and students only. Your registration for this session is subject to the approval of the Session Chair, Ethan M. Grumbach, Ph.D. Space is limited so please pre-register.

Chair: Ethan M. Grumbach, Ph.D.
(Los Angeles, CA)

Presenter: Patrick Miller, M.D.* (Paris, France)

Participants in the Senior Analyst Presentation Program will be able to demonstrate an understanding of specific techniques utilized by a senior analyst during the presentation. The format of the program will provide a discussion of an analytic week of clinical case material presented with great detail. Part 2 will take place from 2:00 p.m.-4:30 p.m.

After attending this session, participants will gain a greater perspective of various ways of listening to the material and how theoretical concepts may influence their capacity to understand the analytic process.

DAILY SCHEDULE

12:00 noon-1:30 p.m.

**Committee Sponsored Workshop:
The Business of Practice Workshop:
Building and Maintaining a Psychoanalytic
Psychotherapy Practice** CND PSYT

Chair: Carol Reichenthal, Ph.D. (Brookline, MA)
Co-chair: Judith Logue, Ph.D. (Princeton, NJ)
Presenter: Jeffrey Jay, Ph.D.* (Washington, DC)

Open to all interested attendees. This roundtable discussion will focus on how to build and maintain a psychoanalytic psychotherapy practice. We invite you to join us in this structured opportunity to pool experiences about managing the "business of practice." Members of the Psychotherapist Associates Committee will facilitate discussion among attendees. We'll share questions and solutions to common dilemmas. Topics include but are not limited to: office arrangements, referral networks, practice promotion, insurance, fees, office policies, billing, supervision, notes, consent, disclosure and privacy forms, peer and private supervision, and others. We encourage you to email the Chair (carolreichenthal@verizon.net) before the roundtable with your topics of interest and/or questions.

12:15 p.m.-1:45 p.m.

**Committee Sponsored Workshop:
COPE Workshop for Child/Adolescent Supervisors
and Associate Child/Adolescent Supervisors**

Chair: Paula G. Atkeson, Ph.D.
(Washington, DC)
Co-chair: Anita G. Schmukler, D.O.
(Wynnewood, PA)

This COPE Workshop is open to child supervisors and associate child supervisors. The purpose of the workshop is to discuss issues that arise in the supervision of child and adolescent analytic cases. Supervisors share their experiences, including problematic situations, with the intent of developing supervisory skills. Unique issues arise during the supervision of child and adolescent cases which are fruitful to talk over with colleagues. The topic for this meeting will be issues that arise in the supervision of clinical matters and of specific ethical issues that present in the course of the supervisor-candidate-patient analytic work. Several sequential supervisory sessions will be presented to provide clinical material for discussion. You are encouraged to bring your own clinical examples to the workshop.

2:00 p.m.-4:30 p.m.

**Senior Analyst Presentation Program
(Part 2)** CEC CND

For description and educational objectives see Part I at 9:00 a.m.

**Discussion Group 5: Ethics Behind the Couch:
Money** CEC PSYT

Chair: Ernest Wallwork, Ph.D.
(Washington, DC)
Co-chair: Stephen H Behnke, Ph.D.*
(Washington, DC)
Presenter: J. David Miller, M.D. (Washington, DC)
David E. Cooper, Ph.D.
(Chevy Chase, MD)

This discussion group will probe selected ethical issues surrounding differences about money in the analytic setting. The discussion will be launched by two presentations, one by David Cooper, Ph.D., who will address ethical and technical issues in setting and changing the fee, the other by Dr. David Miller, M.D., who will address conflicts between the analyst and analysand about the meanings and value of money.

After attending this session, participants should be able to: appreciate commonly under-acknowledged moral aspects of money and financial arrangements; identify some ethical issues raised by value conflicts about money and the fee; consider alternative ways of thinking ethically as well as technically about conflicts involving money.

**NEW Discussion Group 6: Questions You Always
Wanted to Ask and We Wanted to Answer:
Reflections on the Therapeutic Impact of Self
Psychology** CEC PSYT

Chair: Paul H. Ornstein, M.D. (Brookline, MA)
Co-chair: Anna Ornstein, M.D. (Brookline, MA)

Over the years, the Chair and Co-chair, have collected the most frequent questions asked about the treatment process in psychoanalysis, from the perspective of self psychology. These questions are challenging, highly relevant and well formulated. Most of them relate to the conduct of treatment but also refer to theoretical differences between traditional, relational and self psychology theory. Every effort will be made to answer these questions and the audience is invited to participate both in asking their own questions, and questioning our answers, to stimulate an open discussion.

DAILY SCHEDULE

2:00 p.m.-4:30 p.m. (continued)

After attending this session, participants will be able to define and describe some essential aspects of comparative psychoanalysis. They will comprehend the basic concepts of self psychology and will be able to appreciate what is meant by an “experience near” theory.

Discussion Group 7: Clinical Applications of the Ideas of Some Contemporary French Psychoanalysts: Andre Green **CEC**

Co-chairs: Francis D. Baudry, M.D. (New York, NY)
Gail S. Reed, Ph.D. (New York, NY)

This discussion group will continue to explore similarities and differences between classical psychoanalysis as it is practiced in this country with the very different approach as practiced by Andre Green and his colleagues in France. We will continue to focus on non-neurotic pathologies generally including borderline patients.

After attending this session, participants should be able to describe the work of the negative and the special techniques required to deal with issues of trauma occurring before the emergence of the capacity to symbolize. As a result, they will appreciate the concept of interpretation within the transference in contrast to interpreting the transference. They will also have a better grasp of the way the primitive mental apparatus registers early experience particularly in the body rather than in the mind and also in early deformations of the formal aspects of the functioning of the ego.

Discussion Group 8: Forgotten Analysts and Their Legacy **CEC**

Co-chairs: Joseph Reppen, Ph.D. (New York, NY)
Zvi Lothane, M.D. (New York, NY)
Presenter: Zvi Lothane, M.D. (New York, NY)

This discussion group will appraise contributions of forgotten, neglected and overlooked psychoanalysts and their original and creative contributions, often similar to contemporary work and found in early journals and books. For our second meeting Zvi Lothane, MD, the author of *In Defense of Schreber: Soul Murder and Psychiatry*, will discuss Sabina Spielrein, MD (1885-1942), who since 1980 has achieved more notoriety as the alleged victim

of sexual exploitation by Carl Gustav Jung than recognition as a psychoanalytic therapist of schizophrenics, a theorist about the death instinct and a member of the Vienna Psychoanalytic Society. Dr. Lothane's presentation will focus on her biography, clinical work, and pioneering contributions to the beginnings of child psychology and psychoanalysis.

After attending this session, participants should be able to demonstrate a deeper knowledge of the history of psychoanalysis, its many past thinkers and in particular the originality of Sabina Spielrein.

Discussion Group 9: Superego revisited: Mourning, double reality and the culture of remembering and forgiving **CEC**

Chair & Presenter: Leon Wurmser, M.D.
(Towson, MD)

Based on personal observation, there is a study of the complexity of reactions in the mourning process, reactions that go far beyond what Freud meant with the detaching and dissolving of the links to the lost object, but crucially entail the following elements: 1. multiple layering of guilt feelings (rooted in the omnipotence of responsibility) and of shame, leading to superego splits and contributing to the sense of split self and broken reality, 2. phenomena of global denial, dissociation and semi-delusional experiences; 3. the role of shared suffering and pain grounded in some primordial interpersonal solidarity; 4. the culture of remembering and forgiving as manifested in the Jewish rituals of mourning, especially the shiv'a sitting and veiling mirrors and eyes; 5. the conflicts faced by the grieving psychoanalyst and psychotherapist in his professional work when struck by the suffering and death of a person close to him. Understanding is consoling. But the greatest consolation is “the sympathy, the shared suffering (das Mit-Leiden) in the strictest sense” (Meuli), the dialogue.

After attending this session, participants should be able to recognize the great complexities of the processes of grief and mourning. They will comprehend the prominent role played by superego issues of guilt, shame, omnipotence of responsibility, and resentment as well as of superego splits. Participants will appreciate the impact of the rituals of mourning.

DAILY SCHEDULE

4:45 p.m.-7:00 p.m.

Two-Day Clinical Workshop #1 (Part 1): Workshop Series in Analytic Process and Technique:**CLOSED** **CEC**

Chair: Irene Cairo, M.D. (New York, NY)

Featured

Discussant: Anna Ornstein, M.D. (Brookline, MA)

Presenter: Robin S. Maisel, Psy.D. (Brookline, MA)

In this two-day clinical workshop, a clinical presenter will present detailed case and process material to a featured discussant known especially for his or her contributions to and views on clinical process. Participants along with the featured discussant will have the opportunity to discuss this material in two sessions over two consecutive days and to observe first-hand how the featured discussant thinks clinically.

After attending these sessions, participants should be able to: describe how the featured discussant thinks about a specific clinical case; apply some of the featured discussant's ideas to his or her own subsequent clinical work; compare approaches to the same clinical material by different colleagues.

Two-Day Clinical Workshop #2 (Part 1): Workshop Series in Analytic Process and Technique:**CLOSED** **CEC**

Chair: Nancy J. Chodorow, Ph.D. (Cambridge, MA)

Featured

Discussant: Anton O. Kris, M.D. (Cambridge, MA)

Presenter: Leslie Jordan, Ph.D. (Denver, CO)

In this two-day clinical workshop, a clinical presenter will present detailed case and process material to a featured discussant known especially for his or her contributions to and views on clinical process. Participants along with the featured discussant will have the opportunity to discuss this material in two sessions over two consecutive days and to observe first-hand how the featured discussant thinks clinically.

After attending these sessions, participants should be able to: describe how the featured discussant thinks about a specific clinical case; apply some of the featured discussant's ideas to his or her own subsequent clinical work; compare approaches to the same clinical material by different colleagues.

Two-Day Clinical Workshop #3 (Part 1): Workshop Series in Analytic Process and Technique:**CLOSED** **CEC**

Chair: Sharon Blum, Ph.D.

Featured

Discussant: Dr. John Steiner (London, England)

Presenter: Sharon Alperovitz, M.S.W. (Washington, DC)

In this two-day clinical workshop, a clinical presenter will present detailed case and process material to a featured discussant known especially for his or her contributions to and views on clinical process. Participants along with the featured discussant will have the opportunity to discuss this material in two sessions over two consecutive days and to observe first-hand how the featured discussant thinks clinically.

After attending these sessions, participants should be able to: describe how the featured discussant thinks about a specific clinical case; apply some of the featured discussant's ideas to his or her own subsequent clinical work; compare approaches to the same clinical material by different colleagues.

Two-Day Clinical Workshop #4 (Part 1): Psychotherapy Technique and Process**CEC** **PSYT**

Chair: Alan Pollack, M.D. (Newton, MA)

Featured

Discussant: Shelley Orgel, M.D. (New York, NY)

Presenter: Joy A. Kasset, Ph.D.* (Washington, DC)

The Two-Day Clinical Workshop on Psychoanalytic Psychotherapy offers participants an unusual opportunity to investigate the process of psychoanalytic psychotherapy in depth. At each meeting, a psychotherapist presents extended process material from an actual case over two days. Workshop participants, led by a senior clinician, join in examining the moment-by-moment process.

After attending these sessions, participants should be able more fully to comprehend the interplay of surface and unconscious determinants of psychotherapy process, and more ably to apply psychoanalytic understanding to their own clinical work.

DAILY SCHEDULE

4:45 p.m.-7:00 p.m. (continued)

Child and Adolescent Two-Day Clinical Workshop (Part 1)

Chair: Christine C. Kieffer, Ph.D. (Chicago, IL)

Presenter: Bernadette S. Kovach, Ph.D.
(Plymouth, MI)

Featured

Discussant: Robert M. Galatzer-Levy, M.D.
(Chicago, IL)

This workshop is targeted to those interested in the practice of child and adolescent analysis. Problems that arise in the treatment of children and adolescents will be explored. Clinical material will be presented and discussed with a focus on both theory and technique. Technical and theoretical differences will be explored with national and international distinguished discussants.

After attending these sessions, participants should be able to identify, describe and apply a developmental perspective to problems that arise in the treatment of children and adolescents. This should allow the participant to generate interventions based on a dynamic understanding of emotional and cognitive development and demonstrate the importance of psychoanalytic principles in the treatment of children and adolescents.

4:45 p.m.-7:15 p.m.

Discussion Group 10: Perversions: Psychoanalytic Concepts and Treatment

Chair: Joseph P. Collins, D.O. (Bethesda, MD)

Presenter: Michael L. Krass, Ph.D.*
(Falls Church, VA)

Discussant: Nancy R. Goodman, Ph.D.*
(Bethesda, MD)

This discussion group will focus on perverse thought processes in analytic patients. It will include a case presentation of an analysand with masochistic character traits who exhibits a "perverse thought process". The discussion will cover how an analyst can conceptualize and treat perverse dynamics in the analytic setting. This session is meant to broaden the analyst's thinking of perverse dynamics beyond the sexual perversions. An eclectic psychoanalytic model of theory and practice will be highlighted during the session.

After attending this session, the participants should be able to identify perverse dynamics found in analytic patients; integrate this understanding into the overall diagnostic assessment; and develop psychoanalytic interventions for analysands with perverse dynamics.

Discussion Group 11: Shame Dynamics: "Shame and Tact" Clinical Perspectives

Chair: Melvin R. Lansky, M.D.
(Los Angeles, CA)

Co-chair: Leon Wurmser, M.D. (Towson, MD)
Presenter: Jane Warren, Ph.D. (Ann Arbor, MI)

The goal of this workshop is to elucidate shame dynamics as one of the most powerful yet overlooked forces in psychic life. This particular session seeks to link shame and tact, and, using clinical materials, to bring into focus what tact entails in dealing with shame dynamics.

After attending this session, participants should be able to appreciate shame, not simply as an affect, but as a complex and often hidden dynamic system often covered over by more visible parts of the clinical or theoretical picture.

Discussion Group 12: Contemporary Psychoanalytic Views on Masochism

Chair: Nancy Kulish, Ph.D. (Birmingham, MI)

Co-chair: Deanna Holtzman, Ph.D.
(Bloomfield Hills, MI)

Presenter: Robert Alan Glick, M.D. (New York, NY)

This discussion group will explore the major contemporary psychoanalytic approaches to the treatment and understanding of masochism, characterizing a large spectrum of patients. The group features lively and informative clinical presentations by the most respected thinkers and clinicians who have made significant contributions to this area. The advantages and disadvantages of applying different technical approaches and theatrical frameworks to this difficult condition will be highlighted. All clinicians are welcome.

After attending this session, participants should be able to describe typical diagnostic, dynamic, and developmental issues encountered in this patient group; compare different theoretical and technical approaches to the treatment of this kind of patient; demonstrate the rationale for applying psychoanalytic principles to this challenging group of patients; and apply specific therapeutic approaches which have been demonstrated by the invited guest.

DAILY SCHEDULE

4:45 p.m.-7:15 p.m. (continued)

Discussion Group 13: Psychoanalytic Perspectives: The IPA at the United Nations **CEC***Chair:* Vivian Blotnick Pender, M.D.
(New York, NY)*Presenter:* Isaac Tylim, Psy.D. (New York, NY)*Discussant:* John Barnhill, M.D. (New York, NY)

This discussion group will explore avenues of communication between members of the psychoanalytic profession and members of the United Nations and its worldwide family of agencies. It is an effort to make psychoanalysis visible in the UN system and to enable psychoanalysts to learn more about international issues to which our profession may be able to relate.

After attending this session, participants should be able to identify better the kind of contribution he or she can provide in view of integrating psychoanalytic perspectives in discussion of issues such as human rights, women's rights, peace, conflict resolution and environment.

Discussion Group 14: Emerging Perspectives on Lesbian, Gay, Bisexual, and Trans Issues: When the Analyst and Analysand are Both Openly Gay Men **CEC** **PSYT***Chair:* Ethan M. Grumbach, Ph.D.
(Los Angeles, CA)*Presenter:* Cary D. Friedman, M.D.
(Cambridge, MA)*Discussant:* Ralph E. Roughton, M.D. (Atlanta, GA)*Coordinator:* Carlos Almeida, M.D. (New York, NY)

This discussion group will present an opportunity to explore issues in the analysis of a self identified gay man who is in analysis with a self identified gay analyst. Case material will be presented to facilitate a discussion of how analysts can understand and utilize the transference and counter transference when working with these dynamics. The discussion will also include some exploration of how current analytic writing on these issues can be helpful in expanding the availability of both the analyst and the analysand to explore aspects of the therapeutic relationship.

After attending this session, participants should be able to understand how specific aspects of transference and counter transference may be easily overlooked. Participants should be able to recognize how current psychoanalytic writing addresses these issues and how one can apply these specific therapeutic approaches in analytic treatment.

Discussion Group 15: Child Analytic Process: Failure to Thrive with Food and Feelings: The Early Analysis of an Adolescent **CEC***Chair:* Samuel E. Rubin, M.D. (Birmingham, AL)*Co-chair:* Lee I. Ascherman, M.D.
(Birmingham, AL)*Presenter:* Kelly S. Kearfo Hill, M.D. (Versailles, KY)

This discussion group will involve questions of analyzability, the work with early resistances and their reflections in the transference-countertransference tensions. Family adolescent misperceptions will add to the flavor of this analytic process. Attendees will benefit from the discussion and study of analyzability in an adolescent with severe difficulties. The effects of the parent's and child's fear of the treatment being a "court of last resort" will be described.

After attending this session, participants should be able to describe those factors that both facilitate an analytic process as well as inhibit its development.

Discussion Group 16: Love, Sex and the American Psyche: "Romantic Attachment in the Literature of Edgar Allan Poe" **CEC***Chair &**Presenter:* R. Curtis Bristol, M.D. (Washington, DC)*Co-chair:* Stefan A. Pasternack, M.D.
(Delray Beach, FL)

This discussion group will explore the life and mind of Edgar Allan Poe through his literature. Various theories of love psychopathology apply to Poe's characters and have clinical relevance to the psychoanalytic evaluation and treatment of analysands in love.

After attending this session, participants should be able to define and describe the tools of applied psychoanalysis by studying the structure of character, especially the bonds of romantic love in Poe's Nineteenth Century imaginative literature.

4:45 p.m.-7:15 p.m.

Research Seminar: The Nature of Psychoanalytic Evidence: Applications of Neuroscience and Narrative Research **CEC***Chair:* Lois W. Choi-Kain, M.D.* (Belmont, MA)*Presenters:* Suzanne M. Garfinkle M.D.*
(New York, NY)*Andrei Irimia, Ph.D.* (LaJolla, CA)**Discussant:* Charles P. Fisher, M.D.
(San Francisco, CA)

DAILY SCHEDULE

4:45 p.m.-7:15 p.m. (continued)

In an era of evidence based treatments, ongoing efforts to clarify the empirical basis of psychoanalysis are critical. This research seminar will consider connections between neuroscientific and narrative forms of evidence to psychoanalysis. Suzanne Garfinkle will discuss the role of narrative case histories in psychotherapy education as a form of evidence. She will discuss case history as a complementary form of “evidence” that is convincing to trainees through narrative, rather than quantitative, means. Andrei Irimia will describe pertinent findings from memory research to illustrate several ways in which psychoanalysis and neuroscience can benefit each other. He will explain how accessing remote autobiographical memories both influences mechanisms of repression and therapeutic benefits of psychoanalysis through a review of the literature and an explanation of his own research.

After attending this session, participants should be able to recognize the relevance of neuroscientific and narrative methodologies of research to the practice of psychoanalysis.

7:15 p.m.-8:30 p.m.

Social Event: Reception to Welcome Lesbian, Gay, Bisexual, and Transgender Participants

Sponsored by the Committee on Lesbian, Gay, Bisexual, and Transgender Issues, all meeting registrants are welcome to attend this reception which follows the Discussion Group on Emerging Perspectives on Lesbian, Gay, Bisexual, and Transgender Issues.

THURSDAY, JUNE 10, 2010

7:45 a.m.-8:15 a.m.

Social Event: Breakfast Gathering for Affiliate Members and Candidates **CND**

Join colleagues from around the country for breakfast. All are welcome to stay for the Affiliate Council meeting immediately following the breakfast.

8:00 a.m.-4:30 p.m.

Administrative Meeting: Executive Council

APsaA's Board of Directors, known as the Executive Council, is responsible for the management of the affairs and business of the Association. The Executive Council is comprised of the Association's officers, eight nationally elected Councilors-at-Large, and councilors representing each Affiliate Society of the Association as well as each Affiliate and Affiliated Study Group. The Executive Council meeting is open to any member of the Association except when there is a need for the Council to be in executive session.

8:15 a.m.-12:30 p.m.

Administrative Meeting: Affiliate Council **CND**

Please come and stay for our Affiliate Council meeting, where we will be joined by various guests, including our foreign IPSO colleagues. New Affiliate Council officers will be introduced, and we encourage all Affiliate Members to participate in our memberconnect roundtable.

9:00 a.m.-11:30 a.m.

Discussion Group 17: Transformational Moments in Psychoanalysis and Literature: “Oedipus at the Crossroads 2010” **GEC**

Chair: R. Curtis Bristol, M.D. (Washington, DC)
Co-chair: Sandra G. Hershberg, M.D. (Bethesda, MD)
Presenter: Joseph D. Lichtenberg, M.D. (Bethesda, MD)

The presentation by Dr. Lichtenberg will review current views of the Oedipus Complex in clinical psychoanalysis. Since the traditional formulation by Sigmund Freud many variations regarding the theoretical utility and interpretative value of the Oedipus Complex have come into existence.

After attending this session, participants should be able to comprehend the history behind the Oedipus Complex and how to define and describe the Oedipal configurations and their interpretation in clinical work.

Discussion Group 18: Power Struggle over Memory in Harold Pinter’s “Old Times”

CANCELLED

DAILY SCHEDULE

9:00 a.m.-11:30 a.m. (continued)

Discussion Group 19: Psychoanalytic Treatment of Eating Disorders and Body Image Concerns Across the Life Cycle **CEC**

Chair: Kathryn J. Zerbe, M.D. (Portland, OR)
Presenter: Lauren A. Berg, M.A., L.P.A. (Portland, OR)

The case of an adult patient in psychoanalysis will be presented to demonstrate common defensive patterns of eating disorder patients and the relationship to food that all persons, especially those with eating problems, have in unconscious mental life. Process notes will demonstrate some of the most salient issues that must be addressed as a patient works through the manifest symptom. Emphasis will be placed on why patients with these problems are coming to dynamic and analytic treatments more often despite the 'evidence based' reviews of CBT and supportive therapy. The need to deconstruct the major defenses that enslave the eating disorder patient, the right of the patient to claim their own life, counter transference reactions to the lugubrious and slow work of unraveling the symptom, will be highlighted in the discussion.

After attending this session, participants should be able to: describe the typical dynamic issues encountered in this patient group; compare the dynamic patterns that are unique to periods of the life cycle; generate interventions that incorporate a developmental perspective; demonstrate the rationale for applying psychoanalytic principles to this challenging group of patients.

Discussion Group 20: The Influence of the Contemporary British Kleinians on Clinical Psychoanalysis: A Case in Process **CEC**

Chair: Abbot A. Bronstein, Ph.D. (San Francisco, CA)
Co-chair: Katherine MacVicar, M.D. (Berkeley, CA)

Using material from an ongoing analysis conducted by a senior candidate or graduate analyst, this discussion group will explore material from successive hours and attempt to understand the unconscious phantasies and processes that underlie it. We will use established Kleinian concepts such as the total transference situation, the two basic positions, paranoid-schizoid and depressive, and defenses including splitting and projective identification. We hope to demonstrate the inevitability of the analyst being pulled or nudged toward enactments supporting the patient's defenses. We will discuss interventions and interpretations that we feel will promote psychic change and try to elucidate in the material the various forces opposing change.

After attending this session, participants should have a greater understanding of the therapeutic process from the Kleinian point of view. They should recognize how the analyst works in the here-and-now, how he attempts to elucidate the leading edge of anxiety in the transference, and how he uses his counter transference to identify how he is being used either for or against understanding.

Discussion Group 21: The Termination Phase of Analysis **CEC**

Chair: Mayer Subrin, M.D. (Bloomfield Hills, MI)
Co-chair: David R. Dietrich, Ph.D. (Birmingham, MI)
Presenter: Kathleen Moore, Ph.D. (Bloomfield Hills, MI)

Questions this discussion group will consider include: What qualities distinguish termination phase from preceding stages? What developmental tasks need to be accomplished during this period? Are there typical termination fantasies? Resistance to and within termination as a process and phase will be considered for redefinition. Detailed clinical material will be the basis for the discussion of these and other questions.

After attending this session, participants should be able to understand the termination as phase and process, meaning of play in the course of treatment of children who are in the pre-oedipal phase when they begin analysis. Process is examined for insight into technical and structural understanding of work.

Discussion Group 22: Psychotherapist Associates Present: Finding the Meaning in the Sound of Silence **CEC** **PSYT**

Chair: Mae E. Kastor, M.S.W.* (Baltimore, MD)
Co-chair: Carol Reichenthal, Ph.D.* (Brookline, MA)
Presenter: Sweena Seekri, Ph.D.* (Gambrills, MD)
Discussant: Gary Grossman, Ph.D. (San Francisco, CA)
Coordinator: Marcia Polansky, M.S.W., Sc.D.* (Philadelphia, PA)

This Discussion Group, sponsored by the Psychotherapist Associates of the American Psychoanalytic Association and open to all registrants at the APsA meeting, will offer participants the opportunity to deepen their understanding of the theory underlying psychoanalytic psychotherapy and to strengthen their therapeutic skills. At this particular session, attendees can join the presenter and discussant in focusing on the significance of periods of silence and dealing with them therapeutically.

DAILY SCHEDULE

9:00 a.m.-11:30 a.m. (continued)

After this session, participants should be better able to understand their own cases and the process of psychoanalytic psychotherapy. They should also know more about working with the transference as well as periods of silence and understanding and making use of unconscious material.

Discussion Group 23: Therapeutic Action of Psychoanalytically Informed Work with Children in a School Setting: A case illustration of how psychoanalytic understanding promotes psychic growth **CEC** **PSYT**

Co-chairs: Phyllis J. Cath, M.D. (San Francisco, CA)
Aimee Nover, Ph.D. (Bethesda, MD)

Presenter: Kathleen R. Miller, Ph.D. (Bethesda, MD)

Psychoanalysts have worked in school settings for decades. Each analyst creates his or her own creative approach to consultation and collaboration with educators and systems of education. Some analysts consult primarily to directors or staff, some to parents, and some directly work with children. Some analysts work in groups and others individually. Each approach is informed by analytic principles. This discussion group is aimed at giving those who do this kind of work an opportunity to present their approaches and their clinical material, and to offer guidelines for this work. This group offers a forum for discussing compelling illustrative material on a national level, and encourages more analysts to get involved with consultations of various kinds in schools. Dr Miller, a psychoanalyst and director of the Jenny Waelder Hall Center for children will present material for group discussion.

After participating in this session, participants should be able to: 1) understand and evaluate the nature of psychoanalytic-educator collaboration, 2) recognize the challenges and complexity of the work, 3) clarify the difference between the role of teacher, consultant and therapist, 4) be capable of an accurate appraisal of their interest in doing this kind of work, 5) be inspired — whether educator or clinician — to do this kind of work because of its evident effectiveness, power and utility, 6) learn specific techniques of consultation, 7) see how consultation leads to teachers making interventions in the school setting which promote therapeutic action.

Discussion Group 24: Infant Mental Life and the Dream in Psychoanalysis: Working with the Dreams of a Borderline Patient: The struggle to Become a Person **CEC**

Chair: Bernard W. Bail, M.D. (Beverly Hills, CA)

Co-chair: Thomas M. Paris, Ph.D.*
(Santa Monica, CA)

Presenter: Loren A. Weiner, Ph.D.*
(Beverly Hills, CA)

This discussion group will focus on the case presentation of a borderline patient. Process material, including a detailed description of dreams and associations, will highlight the relationship between early mental life and severe pathology. The discussion will also show how the dream can be used to guide the analyst in uncovering the essential unconscious situation that must be understood in any given hour to allow the mind to grow and to help “locate” where in unconscious time and space the patient is living and who he is unconsciously being. If time permits, Dr. Bail will discuss his new paradigm for psychoanalysis developed out of his extensive work in the dream.

After attending this session, participants should have a greater understanding of how dreams illuminate the infantile origins of severe pathology and how the analysis of dreams deepens the analytic process. Participants should also have an increased knowledge of how to work clinically with dream material.

9:00 a.m.-12:30 p.m.

Oral History Workshop #70: Historic Films from the Gitelson Film Library, Chicago Psa. Institute. Reminiscences of Freud and Richard Sterba **CEC**

Chair: Nellie L. Thompson, Ph.D.
(New York, NY)

This workshop will show two films from the Gitelson Film Library that present glimpses of our analytic forebears. *Reminiscences of Freud* includes recollections of Freud from Sandor Rado, Abram Kardiner, David Levy and Lawrence Kubie. The second film is an extended interview with the emigre analyst, Richard Sterba, originally a member of the Vienna Psychoanalytic Society. The role and contributions to psychoanalysis of the analysts featured in these films will be reviewed as well as the circumstances in which the films were made.

DAILY SCHEDULE

9:00 a.m.-12:30 p.m. (continued)

After attending this session, participants should be able to have a better comprehension of our history, fulfilling the traditional aims of our Oral History series. Among these aims is the continuing hope of awakening the interest of younger generations of analysts & their historians in the earlier years of the psychoanalytic movement. This seems especially important as the APsaA approaches the centenary of its founding.

10:00 a.m.-12:00 noon

Committee Sponsored Workshop:**COPE: Workshop on Supervision**

Chair: *Barbara Stimmel, Ph.D. (New York, NY)*

In this group's ongoing interest in supervisors being supervised, we will discuss the reverberations experienced in the work of a senior training-analyst supervisor who is being supervised by a world-famous analyst, from a different country, and working within a different theoretical orientation. The complications, extenuations, and inspirations will be discussed in the context of several case vignettes.

Committee Sponsored Workshop:**Local Fellowship Workshop**

Chair: *Bruce Levin, M.D.
(Plymouth Meeting, PA)*

One of the unanticipated areas of development from the Fellowship Program of the American Psychoanalytic Association has been the creation and emergence of separate local fellowship programs throughout the nation. Training Institutes and Societies in cities such as Chicago, Denver, New York, Philadelphia, and Washington, DC have organized local fellowship programs offering mentorships and courses to psychiatrists, psychologists, social workers and, in some instances, academicians. Local psychoanalytic fellowships can fill an important educational and outreach niche within a psychoanalytic organization. Their unique role compliments existing psychotherapy and psychoanalytic training programs. This workshop will introduce local fellowships to interested members, Societies, and Institutes. We will discuss several models of local fellowships and the positive effects on the local psychoanalytic teaching, learning and the organizational morale. In addition, the workshop will offer: how to recruit local fellows; how to set up didactic work for fellows; costs and benefits.

**Committee Sponsored Workshop:
Committee on Lesbian, Gay, Bisexual
and Transgender Issues Workshop** 

Chair: *Ethan M. Grumbach, Ph.D.
(Los Angeles, CA)*

The Workshop sponsored by the Committee on Lesbian, Gay, Bisexual and Transgender Issues will focus on how to create talking points for APsaA's position statements on Same Sex Marriage, Same Sex Parenting and Gays in the Military. Will Braun, Psy.D., Co-chair, Committee on Public Information, will guide us through techniques and ideas of how we can utilize these position statements to support the need for legislation that protects and supports these rights. Learn how you can use these clear position statements to educate your local community on the impact the results of these recent state propositions have had on the mental health of many individuals. The ongoing political climate shows that there remains to a great deal of work to be done. The public can benefit from our expertise in the mental health area to show the impact marginalization and other acts of discrimination have on the individual. All are welcome to the workshop.

12:00 noon-1:30 p.m.

**Committee Sponsored Workshop:
Workshop on Local Outreach**

Chairs: *Jake Lynn, APsaA Director of Public Affairs (New York, NY)
Mark Smaller, Ph.D.; Chair, Committee on Public Information; Board Member, American Psychoanalytic Foundation (Chicago, IL)
William H. Braun, Psy.D.; Co-chair, Committee on Public Information (New York, NY)*

The Workshop will cover new and inexpensive methods for spreading your message in the local community through the use of social media outlets such as LinkedIn and Facebook. Social media is an effective way to communicate to current and prospective members, without incurring costs associated with print materials. This workshop will also continue to provide an opportunity for you to network with your colleagues from across the country on effective methods of outreach (film series, lectures, partnerships, etc.), marketing, and public relations that help to raise awareness of psychoanalysis in your community and attract more candidates to your institute. Share the activities of your institute, society, center, and/or foundation and brainstorm with others.

DAILY SCHEDULE

12:00 noon-1:30 p.m. (continued)

Please bring copies of brochures and other materials for sharing that have been effective in promoting your outreach. Participants are welcome to bring their own lunch and beverage to the workshop.

**Committee Sponsored Workshop:
Women's Committee Workshop on
Women and Psychoanalytic Training** CND

Chair: *Joanne E. Callan, Ph.D.*
(Solana Beach, CA)

This ongoing workshop focuses on issues relevant to women in psychoanalytic training. This particular workshop will focus on economics, ethics, opportunities, and diverse challenges in women's pursuits of psychoanalytic training.

12:00 noon-2:00 p.m.

**Committee Sponsored Workshop:
Workshop For Candidates and Faculty
of NTF's and Provisional Institutes**

Chair: *Beth Seelig, M.D.*

This is an opportunity to share experiences, problems and issues related to new institute development and to learn from each other.

**Committee Sponsored Workshop:
Workshop on Teaching about Analytic Case Writing**

Chair: *Stephen B. Bernstein, M.D.*
(Chestnut Hill, MA)

Co-chairs: *Ellen G. Blumenthal, M.D.*
(Brookline, MA)
Melvin Bornstein, M.D.
(Birmingham, MI)

Jonathan Palmer, M.D. (Newton, MA)

Arthur L. Rosenbaum, M.D.

(Cleveland Heights, OH)

Peggy Ellen Warren, M.D. (Waban, MA)

Presenters: *Ellen Pinsky, Psy.D. (Cambridge, MA)*
Kathryn V. Jones, M.D. (Brookline, MA)
Karen Melikian, Ph.D. (Brookline, MA)
Barbara Kennedy Roney, M.A., M.S.W.
(Providence, RI)
*Elizabeth Marks, M.D.**
(Newton Upper Falls, MA)
Phil S. Lebovitz, M.D. (Chicago, IL)

The workshop will continue to discuss the teaching of analytic case writing. At this meeting, Ellen Pinsky, Ph.D. of the Boston Psychoanalytic Society and Institute will introduce presentations by Kathryn Jones,

MD; Karen Melikian, PhD; Barbara Roney, LICSW; and Elizabeth Marks, M.D., who will discuss their experiences writing about their analytic work during their analytic training. In addition, Phil Lebovitz, M.D. of the Chicago Psychoanalytic Institute will discuss the Chicago Colloquium system, which the APsaA Board of Professional Standards is considering as part of a developmental model toward certification in the revised Standards for Education and Training In Psychoanalysis. Attendees are often faculty, graduates, and candidates from the growing number of institutes that are teaching or developing seminars dealing with clinical writing. (The Workshop is held in conjunction with a separate Discussion Group "Writing About Your Analytic Work In A Case Report", Thursday, from 4:45 p.m. to 7:15 p.m.

12:30 p.m.

Social Event: Candidate Dutch Treat Lunch CND

Immediately following the Affiliate Council meeting, please join us for a Dutch Treat lunch. Please sign up on the Bulletin Board near the Registration Desk or at the Affiliate Council meeting.

2:00 p.m.-4:30 p.m.

**Affiliates' Forum: The New Educational
Guidelines for Psychoanalytic Education
in APsaA Institutes** CEC CND

Chair: *Phoebe A. Cirio, M.S.W., LCSW*
(St. Louis, MO)

Presenters: *Erik Gann, M.D. (San Francisco, CA)*
Robert A. Glick, M.D. (New York, NY)
Elizabeth Lennihan, LCSW (Chicago, IL)

In this session members will discuss the proposed changes in requirements for graduation from APsaA institutes, including a description of the rationale for, and the process of, formulating the proposal. They will present the developmental model, and the educational options that are going to be available for institutes and candidates. A candidate from an institute that currently uses the developmental model will present on the experience of using that model.

After attending this session, participants will be able to recognize the change in requirements for graduation from psychoanalytic institutes. Attendees will be able to obtain clarification about the waiver for non-training analysts, the developmental model, and changes in certification procedures.

DAILY SCHEDULE

2:00 p.m.-4:30 p.m.

NEW **Discussion Group 25:**
Psychotherapy's Challenge
to Institutional Psychoanalysis and
the identity of the Psychoanalyst **CEC** **PSYT**

Chair &
Presenter: Richard P. Fox, M.D. (Dana Point, CA)

This discussion group will focus on the evolution of psychoanalytic education, theory and practice in relation to psychotherapy. Many of the old distinctions and dichotomies have become as dated as "medical orthodoxy," and yet, within our organizations, an "Upstairs-Downstairs" split continues to undermine rather than support the importance of psychotherapy. The group will trace the antecedents of this split and examine its impact on today's practitioners, students, and organizations. The focus will be on the limitations and negative effects this has had with an eye to developing ways to address this anachronism and develop a more inclusive rather than exclusive view of practicing and teaching psychoanalysis

After attending this session, participants should be able to recognize how actual therapeutic practice has changed over the past fifty years. They will assess the potential benefits and risks of a more integrative approach to psychoanalytic therapy and organizational structure.

Discussion Group 26: Insights from Infant
Research for the Practicing Psychoanalyst:
Analytic Parent-Child Psychotherapy **CEC** **PSYT**

Chair &
Discussant: Alexandra Harrison, M.D.
(Cambridge, MA)

Dr. Harrison will introduce a method of parent-child psychotherapy for preschool children. She draws on infant-parent psychotherapy and the work of other analytic clinicians and theorists in creating a method of dyadic treatment in which mother and child (or father and child) are helped to tell their story in pretend play in the analyst's office. Dr. Harrison uses videotape intervention with parents singly and in parent groups as part of the method. The discussion group presentation will include videotaped parent-child sessions. Discussion will address the advantages of dyadic treatment and compare it with other forms of analytic treatment for children and adults who are parents.

After attending this session, participants should be able to: (1) compare different models of therapeutic intervention for preschool children and their parents, (2) learn the value of videotape analysis to understanding clinical process, (3) understand general principles of open systems theory that underscore the process of growth and change in healthy development and psychotherapy.

Discussion Group 27: Analytic Listening:
Reflections on Hypothesis and Evidence **CEC**

Chair: Evelyne Albrecht Schwaber, M.D.
(Brookline, MA)
Co-chair: Ralph Beaumont, M.D. (Portland, OR)

The focus will be on details of the data-gathering process, and on how we conceptualize our clinical methodology, to consider the distinctions between the hypotheses we generate and the evidence we have for them. Looking at process notes of single session(s), we will try to sharpen our view on nuances of communications, both verbal and nonverbal (pauses, shifts in affect, posture, appearance, etc.). Effort will be made to highlight attendance to cues we might otherwise overlook, and to reflect on some of our assumptions and inferences — whatever our espoused theoretical model — to see how these may or may not hold up or stand in the way of opening yet untried paths. Presenter(s) will be located from among people planning to attend, and suggested reading lists will be sent.

After attending this session, participants should be able to gain deepened awareness of how one listens to and gathers the clinical data, and of the distinctions between hypotheses generated and the evidence for them; to locate verbal and nonverbal cues that may be otherwise overlooked; and to consider further implications in the nature of therapeutic action.

Discussion Group 28: The Synergizing Potential
of Individual and Couple Treatment **CEC** **PSYT**

Chair: Graciela E. Abelin-Sas, M.D.
(New York, NY)
Co-chair: Peter Mezan, Ph.D. (New York, NY)*

Based on our sharing many cases of patients simultaneously in individual psychoanalysis and psychoanalytic couple therapy, this discussion group will focus on the common internal mechanisms by which two individuals form and become a couple, creating an unconscious organization of the couple that is distinct from those of the individuals in it. We shall illustrate by clinical material how this organization may either enhance or block individual development.

DAILY SCHEDULE

2:00 p.m.-4:30 p.m. (continued)

After attending this session, participants should be able to recognize and interpret distortions their individual patients convey about their partners, in gesture and tone as well as in words; recognize and contend with the repetitive enactments that create in the individual powerful resistances to analysis and are linked to the couple relationship; and observe the mutually synergizing interactions and effects between a simultaneous individual and couple treatment by means of precise interventions.

Discussion Group 29: Psychoanalytic Perspectives on the Dissociative Disorders **CEC** **PSYT**

Chair &

Presenter: *Richard P. Kluft, M.D.*
(Bala Cynwyd, PA)

Co-chair: *S. Ami Berkowitz, M.Ed.* (Amler, PA)

This discussion group will explore the interface of psychoanalytic theory and practice with developing theory and practice in the study of dissociation and the dissociative disorders. The presentation of a patient with a dissociative disorder treated in psychoanalysis, psychoanalytic psychotherapy, or psychoanalytically-informed psychotherapy will be followed by the intense study and discussion of transcripts of a series of treatment sessions, allowing the group to track, analyze, and interpret the ongoing process of the therapeutic work, assess the impact of interventions upon dissociative defenses and processes, and follow the vicissitudes of memory, transference-countertransference, reenactments, and enactments across dissociated states.

After attending this session, participants should be able to describe the manifestation of defensive processes in the characteristics, interactions, and switches of dissociated aspects of mental structure and function; formulate interpretations that simultaneously address parallel distributed dissociative processes; identify and classify varieties of disruption of the communicative field with dissociative patients; and appraise the meanings of switch processes occurring during sessions and their participation in the relationship between the dissociative patient and the analyst.

Discussion Group 30: Psychoanalysis and the Humanities and Social Sciences: The CORST Contribution **CEC**

Chair: *Melvin R. Lansky, M.D.*
(Los Angeles, CA)

Co-chair: *Robert A. Paul, Ph.D.* (Atlanta, GA)

Presenter: *Janet R. Hadda, Ph.D.*
(Los Angeles, CA)

This discussion group will explore the connections between psychoanalytic research in the humanities and clinical work in psychoanalysis. The presenter, Janet Hadda, is a Training and Supervising Analyst at the New Center for Psychoanalysis and at the Institute for Contemporary Psychoanalysis, both in Los Angeles, and Professor of Yiddish, Emerita, at UCLA. She will talk about her work in Yiddish poetry, prose, and biography and about the interaction of her academic work and her analytic practice.

After attending this session, participants should be able to: (1) describe ways in which clinical experience and academic research complement and enrich one another; (2) distinguish key aspects of Yiddish literature; and (3) recognize the contributions of academic research to psychoanalytic knowledge.

Discussion Group 31: Psychoanalytic Aspects of Assisted Reproductive Technology **CEC**

Chair: *Mali A. Mann, M.D.* (Palo Alto, CA)

This discussion group is designed to provide understanding of the intra-psychic effects of reproductive difficulties on men, women and their children.

After attending this session, participants should be able to define and describe the skills needed to explore the psychotherapeutic approaches that ameliorate the difficulties of the patients who are undergoing at present or were subjects in the past of the process of assisted reproductive technology.

Discussion Group 32: The Vulnerable Child: Parent Loss Through Death and Trauma: Getting Development back on Track **CEC**

Co-chairs: *M. Hossein Etezady, M.D.* (Malvern, PA)
Mary Davis, M.D. (Lancaster, PA)

Presenters: *Mark D. Smaller, Ph.D.* (Chicago, IL)
Erika Schmidt, LCSW (Chicago, IL)

Discussant: *Carla Elliott-Neely, Ph.D.*
(Washington, DC)

This discussion group will address theoretical concepts and detailed clinical examples of parent loss in childhood, its traumatic impact on development, and how treatment can help integrate the loss and related feelings in order for development to resume. As experienced adult and child psychoanalysts, the presenters will address these issues with implication for both child and adult treatment. Both adult and child analysts and therapists are encouraged to participate.

DAILY SCHEDULE

2:00 p.m.-4:30 p.m. (continued)

After attending this session, participants should be able to identify certain dynamics that are particular to children who have experienced parent loss, the impact of that loss on development, be informed about treatment strategies that help the child integrate the loss, and understand implications for both child and adult psychoanalytic treatment. Participants will also be able to identify issues of transference and counter-transference relevant and unique to this clinical work.

Discussion Group 33: A Classic Unvisited: The Clinical Value of the Ideas of Wilfred Bion **CEC**

Chair: Irene Cairo, M.D. (New York, NY)
Co-chair: Rogelio A. Sosnik, M.D. (New York, NY)
Presenter: Lizbeth Moses, Ph.D. (Bethesda, MD)

Wilfred Bion's model of mental functioning is anchored strongly on Freud's and Klein's theories: yet it provides a new and different tool for approaching the process. For Bion, the encounter of two minds produces an emotional storm where both participants approach the meeting with specific expectations. Session material will be presented to show how Bion's model can affect the apprehension of clinical material, with a particular emphasis on expanding the analyst's capacity for interpretation.

After attending this session, participants should be able to identify Bion's basic ideas in the way they are applied to different clinical situations.

Discussion Group 34: Impasses in Psychoanalysis **CEC**

Co-chairs: Steven H. Goldberg, M.D. (San Francisco, CA)
 Judy L. Kantrowitz, Ph.D. (Brookline, MA)

In this discussion group we study the factors in both patient and analyst that contribute to the development of impasses and analytic "failures." In particular, using detailed case presentations, we examine the subtle ways in which patient and analyst elicit in each other emotional experiences that cannot be adequately processed and understood. We attempt to normalize the experience of struggling with such cases — though all analysts find themselves dealing with impasses and analytic failures, such experiences often become sources of shame rather than opportunities for learning and personal/professional growth.

After attending this session, participants should be better able to differentiate impasses and analytic "failure" from more expectable processes of resistance and working through. Participants should gain greater understanding of the difficult to recognize

contributions of both patient and analyst to the impasse, as well as greater appreciation for the necessity of self-analytic work and/or consultation in the resolution of the impasse.

Discussion Group 35:

Baseball and Psychoanalysis **CEC**

Chair: Robert L. Pyles, M.D., President-Elect (Wellesley Hills, MA)

Special

Guest: Stan H. Kasten, President, Washington Nationals Major League Baseball Team

Discussant: Paul C. Holinger, M.D. (Chicago, IL)

APsaA would like to thank member Dr. Bruce Levin for facilitating this very special Discussion Group. Dr. Levin's former college roommate is Robert K. Tanenbaum, Principal Owner of the Washington Nationals. Mr. Tanenbaum specifically asked Stan Kasten, President of the Washington Nationals, to participate in this Discussion Group as a unique favor for Bruce and the Association.

Robert Pyles, who has advised Major League Baseball for many years will be chair of this Discussion Group. Every winter before Spring Training begins Dr. Pyles provides psychoanalytic "coaching" to a select number of rookies and promising minor league players at an off-the-field retreat. At the retreat Dr. Pyles helps players prepare for the pending fame and societal pressures that will result from their stardom and newfound wealth.

After attending this session, participants should be able to (1) understand the function of sports as an important psychological adaptive mechanism for coping and mastery, (2) identify what psychological qualities go into becoming a world class athlete, (3) comprehend what special stressors these athletes confront in the face of high level competition and possible injury, and (4) ascertain what lessons can be learned from these champion athletes that can apply for the health and fitness for all of us.

Stan Kasten has a lifetime of achievement in establishing and managing professional sports teams. He is the first person in pro sports history to hold the position of President of three different teams simultaneously. Among his accomplishments, Mr. Kasten holds a 1995 World Series Championship (with the Atlanta Braves) while his teams made a combined 30-playoff appearances and captured 15 division titles. Throughout his career, Mr. Kasten has played an important leadership role in the National Basketball Association, the National Hockey League and Major League Baseball.

DAILY SCHEDULE

2:00 p.m.-4:30 p.m. (continued)

The Nationals will be playing the Pittsburgh Pirates at 7:05 p.m. at Nationals Park. Through the courtesy of Mr. Tanenbaum and Mr. Kasten, APsaA has access to prime seats behind the dugout at the game and a private behind-the-scenes tour of Nationals Park for the combined special price of \$50.00. Nationals Park is a state-of-the-art facility that was built specifically for the Nationals in the burgeoning Navy Yard section of Washington, D.C. The stadium opened in 2008 and has since turned a once struggling industrial section of the city into a vibrant residential area.

Directions to Nationals Park via the Metro:

Exit hotel on 9th Street. Walk down 9th Street and take a left onto H Street. Continue on to 7th Street and enter Metro (Mt. Vernon Sq/7th St/Convention Center station). Take Green Line towards Branch Avenue. Get off at Navy Yard. Follow the signs to Nationals Park.

4:45 p.m.-7:00 p.m.

Two-Day Clinical Workshop #1 (Part 2) Workshop Series in Analytic Process and Technique: CLOSED CEC

Two-Day Clinical Workshop #2 (Part 2) Workshop Series in Analytic Process and Technique: CLOSED CEC

Two-Day Clinical Workshop #3 (Part 2) Workshop Series in Analytic Process and Technique: CLOSED CEC

Two-Day Clinical Workshop #4 (Part 2) Psychotherapy Technique and Process CEC PSYT

Child and Adolescent Two-Day Clinical Workshop (Part 2) CEC

4:45 p.m.-7:15 p.m.

Discussion Group 36: Trauma in the Transference CEC PSYT

Chair &

Discussant: Richard K. Hertel, Ph.D. (Ann Arbor, MI)

Co-chair &

Presenter: Richard Waugaman, M.D. (Chevy Chase, MD)

The presenter will discuss clinical material from a staff conference at the former Chestnut Lodge, along with process notes and long-term follow-up material.

The original conference included debate about whether or not the patient had Dissociative Identity Disorder, as well as discussion about her optimal treatment. It is the hope that some of the original participants in that staff conference will be present in order to revisit it.

After attending this session, participants should be able to identify and discuss manifestations of Dissociative Identity Disorder in the transference; and to recognize effective techniques for helping patients who have this disorder.



Discussion Group 37: The Contributions to Psychoanalysis of Paul Gray CEC PSYT

Chair: Todd Davison, M.D. (Glendale, WI)

Co-chairs: Monroe Pray, M.D. (Bethesda, MD)

R. Curtis Bristol, M.D. (Washington, DC)

This discussion group will read selections from Paul Gray's papers and discuss highlighted passages chosen by the Chair and Co-chairs. In the discussion of these passages the group will be re-acquainted with Paul Gray's salient contributions to psychoanalysis.

After attending this session, participants should be able to describe some salient contributions to psychoanalysis of Paul Gray and to employ some of his theoretical and technical suggestions in the treatment of patients in psychoanalysis or psychotherapy.

Discussion Group 38: Psychoanalysis and Film Faith and Faithlessness: The Role of the Erotic Imagination CEC

Chair: Bruce H. Sklarew, M.D. (Chevy Chase, MD)

Presenters: Lissa Weinstein, Ph.D. (New York, NY)
Diana Diamond, Ph.D.* (New York, NY)*

Film's capacity to represent imagistically the myriad feelings and fantasies that link self to object makes it an arena to examine relational processes and dilemmas inherent to long term erotic attachments. We will explore issues of faith and faithlessness depicted in *Love*, by Karoly Makk, and two of Bergmann's late films, *Faithless* and *Private Confessions*. These autobiographical films suggest the imagination can sustain erotic attachments even when faced with loss, deprivation and betrayal. Cinematic techniques used to meld the fantasy life of the director/screenwriter and the audience and the role of socio-historical conditions in fostering the displacement of Eros onto the world of objects and memory will be discussed.

DAILY SCHEDULE

4:45 p.m.-7:15 p.m. (continued)

After attending this session, participants should be able to comprehend Freud's original concept of Eros and its later modification, recognize how film technologies serve as mediums to express the internal world of drives and object relations, and appreciate the erotic imagination's function as a wellspring of creativity and reparation.

Discussion Group 39: Candidate to Candidate: Developing an Analysis, Deepening the Process **CEC** **CND**

Chair: Phoebe A. Cirio, M.S.W., L.C.S.W.
(St. Louis, MO)

Presenter: Norman V. Kohn, M.D. (Chicago, IL)

Discussant: M. Barrie Richmond, M.D.
(Highland Park, IL)

Dr. Kohn will present clinical material drawn from different points in time from a single case to show the development of analytic skill and technique. Dr. Richmond will explore the development of the analysis in terms of the emergence of elements of an analysis over time, including emergence of transference, deepening of the process, and other hallmarks of the analytic process.

After attending this session, participants should be able to comprehend the analytic process and be able to define and describe the attributes of analytic process.

Discussion Group 40: Writing About Your Analytic Work in a Case Report **CEC** **CND**

Chair: Stephen B. Bernstein, M.D.
(Chestnut Hill, MA)

Co-chairs: Melvin Bornstein, M.D.
(Birmingham, MI)
Jonathan Palmer, M.D. (Newton, MA)
Arthur L. Rosenbaum, M.D.
(Cleveland, OH)

Presenter: Peggy E. Warren, M.D. (Waban, MA)
Alison C. Phillips, M.D. (Wellesley, MA)

As analysts we are often called upon to describe our analytic work in written form. Clinical psychoanalysis is a spoken process, however it is through a written process that much of our reflection, learning, teaching, transmission of clinical data, and research occurs. This Discussion Group is an attempt to help you in the translation of your clinical work from spoken to written modes. It is led by analysts who have had significant experience in teaching about clinical writing.

After attending this session, the participant should be able to organize and write about the analyst's work more easily, either in a brief clinical vignette or in an extended case report. Methods will be demonstrated to help the beginning clinical writer make the analytic experience more accessible and clear so that the level of reader inference is decreased. The participant will learn ways to begin to write about analytic process; to reveal and bring alive the experience of both the patient and the analyst; and to deepen the reader's understanding of the clinical account.

Discussion Group 41: Research on the Relation of Psychoanalysis and Neuroscience: Must We Leave it to Neuroscientists to Rediscover the Reality Principle and Other Psychoanalytic Concepts? **CEC**

Chair: Charles P. Fisher, M.D.
(San Francisco, CA)

Co-chair: George G. Fishman, M.D.
(Chestnut Hill, MA)

Presenter: Peter J. Freed, M.D.* (New York, NY)

This group will focus upon several areas of contemporary research in neuroscience that are of significant and controversial relevance for psychoanalytic theory and practice. Emerging neuroscience studies of the brain as a future predictor, and investigations of the so-called "resting state" of the brain are closely linked to psychoanalytic concepts of reality testing and free association. Yet psychoanalysts may overlook these important connections, leaving it to neuroscientists to rediscover psychoanalytic concepts. Certain resistances within psychoanalysis, including uncritical acceptance of neuropsychanalytic concepts on one hand and "neurophobia" on the other, hinder interdisciplinary work.

After attending this session, participants should be able to gain facility in formulating psychoanalytic concepts, such as reality testing and free association, so that they can stimulate creative work in neuroscience. They will become more familiar with the emerging neuroscience concept of the brain as a future predictor and learn how certain resistances within psychoanalysis, including uncritical acceptance of neuropsychanalytic concepts on one hand and "neurophobia" on the other, hinder interdisciplinary work.

DAILY SCHEDULE

4:45 p.m.-7:15 p.m. (continued)

Discussion Group 42: Advocacy for Psychoanalysis: Implications of Jaffee v. Redmond: Federal Psychotherapist Patient Privilege **CEC** **PSYT**

Co-chairs: Norman A. Clemens, M.D. (Cleveland, OH)
Paul W. Mosher, M.D. (Albany, NY)
Presenter: Joy Pritts, J.D.* (Washington, DC)

Since 1996 this discussion group has studied the Supreme Court decision in Jaffee v. Redmond and followed its many consequences with implications for clinical practice. These include effects on Federal and state court proceedings as well as the HIPAA Privacy Rule. With the push towards widespread use and transmission of electronic medical records, new challenges to privacy and confidentiality have arisen. This discussion group engages practicing psychoanalysts in learning about these important issues and how to deal with them. Almost always there is a presenter with special expertise in a field related to these concerns, gained from long experience in a government agency, judicial setting, law firm, or university department that works directly with these issues.

After attending this session, participants should be able to describe recent developments in the legal consequences of the 1996 Jaffee-Redmond decision, with particular attention to the dimensions of privacy, confidentiality, and privilege as they apply to the personal information disclosed in psychotherapy and psychoanalysis; and apply this knowledge to protect their patients and their therapy.

Discussion Group 43: Psychoanalysis and China: Teaching and Treating in China, Ethical Issues **CEC**

Chair: Elise W. Snyder, M.D. (New York, NY)
Co-chairs: Lana P. Fishkin, M.D. (Bala Cynwyd, PA)
Susan Shively, M.D. (Philadelphia, PA)

The goal of this discussion group is to inform participants about the ethical issues that arise in training Chinese mental health professionals to do psychoanalytic psychotherapy.

After attending this session, participants should be able to understand the complicated ethical issues involved in training people from another culture and the ethical issues they bring to their training. Participants will also meet members of the China American Psychoanalytic Alliance and learn how they can participate in its work.



Discussion Group 44: Gender Identity Difficulties in the Discourse of Female Analyzands **CEC**

Co-chairs: Mia Biran, Ph.D. (Oxford, OH)
Hilli Dagony-Clark, Psy.D. (New York, NY)

This discussion group will focus on identifying themes of gender identity conflicts and confusions in the discourse of adult female patients. Underneath symptoms of depression, anxiety, aggression, self-defeating behaviors, and sexual difficulties, there often lie unresolved identity issues originating from early stages of development. After reviewing relevant literature, the presenters (Mia Biran, Ph.D., Professor and Faculty at the Cincinnati Psychoanalytic Institute, and Hilli Dagony-Clark, Psy.D., advanced candidate at the New York Psychoanalytic Institute (NYPSI) and president-elect of the Affiliate Council) will describe sessions from analysis with two female analyzands and conduct a discussion with the participants about the relevancy of the material to gender identity conflicts.

After attending this session, participants should be able to recognize literature regarding revival of archaic gender identity conflicts in the life of adult women and their resolution in the analytic process. Participants should also be able to demonstrate heightened sensitivity to themes of gender identity conflicts as they appear in the manifest and latent discourse of their analyzands.

4:45 p.m.-7:15 p.m.

Special Program #1 for Psychiatric Residents, Psychology and Social Work Students: The Role of Supervision in the Process of Psychotherapy **CEC**

Chair: Suzanne M. Meehan, M.D.* (New Haven, CT)
Presenter: Alysia Y. Han, M.D.* (San Francisco, CA)
Faculty: Daniel H. Jacobs, M.D. (Brookline, MA)

In this seminar we will discuss how individual psychotherapy supervision influences the course of psychotherapy.

After attending this session, participants should be able to consider the impact of psychotherapy supervision on the therapist and the process of treatment.

DAILY SCHEDULE

5:00 p.m.-7:00 p.m.

**Administrative Meeting:
Council of Society Presidents**

Past-presidents, Presidents and President-elects of Affiliate Societies and Centers are invited to attend. The Council of Society Presidents operates as an informative group, addressing a variety of topics related to the problems we face in our local Societies and Centers. In the past we have discussed such topics as 1) Revitalizing psychoanalytic practice through outreach efforts; 2) New models for psychoanalytic organizations; 3) The distribution of power in our organization; 4) Developing clear ethics procedures and standing ethics committees; 5) The role of presidents and our council in the proposed reorganization of APsA; 6) Dealing with threats from NAAP and other competing groups. The Council of Presidents is an opportunity to share experiences and learn from one another. Ideas for the agenda are welcome.

7:05 p.m.

Washington Nationals Baseball Game

See Discussion Group 35 at 2:00 p.m. for details.

Directions to Nationals Park:

Exit hotel on 9th Street. Walk down 9th Street and take a left onto H Street. Continue on to 7th Street and enter Metro (Mt. Vernon Sq/7th St/Convention Center station). Take Green Line towards Branch Avenue. Get off at Navy Yard. Follow the signs to Nationals Park.

7:15 p.m.-8:15 p.m.

Social Event: Reception for Psychiatric Residents, Psychology, Social Work Students, and Student/Resident Associates: Wine and Cheese

All are welcome to attend this reception following the Special Program #1 for Psychiatric Residents, Psychology and Social Work Students.

7:30 p.m.

Film Workshop: Precious: Based on the Novel Push by Sapphire 

Chair: Bruce H. Sklarew, M.D.

Discussants: Sandra C. Walker, M.D. (Seattle, WA)
Carlotta G. Miles, M.D. (Washington, DC)
Annelle Primm, M.D.* (Baltimore, MD)

The film presents the story of Precious, a poor and illiterate teen who is twice impregnated by her father and abused by her mother as a rival and an object of compensation for her own deep narcissistic injury. Psychoanalysts Sandra Walker, M.D., and Carlotta

Miles, M.D., and psychiatrist Annelle Primm, M.D., Deputy Medical Director of the American Psychiatric Association, will discuss with the audience whether and/or how psychodynamic perspectives can make a difference in work with people who share the experience of Precious and her mother.

After attending this session, participants should be able to identify opportunities and obstacles in working with people from America's underclass who are experiencing intergenerational trauma.

FRIDAY, JUNE 11, 2010

8:00 a.m.-9:30 a.m.


Administrative Meeting: Business Meeting of Members and Presentation of Awards

Chair: Prudence Gourguechon, M.D.,
President (Chicago, IL)

The Meeting of Members is an opportunity for all APsA members to learn about current activities in the Association.

The Meeting also features the presentation of numerous awards and recognitions given by the Association both to members as well as to nonmembers. Each APsA member has one vote at the Meetings. All registrants are encouraged to attend.

9:45 a.m.-11:15 a.m.

**Plenary Address:
Culture, International
Relations and
Psychoanalysis **

Chair: Robert L. Pyles, M.D., President-Elect
(Wellesley Hills, MA)

Introducer: Theodore Shapiro, M.D. (New York, NY)

Speaker: Vamik D. Volkan, M.D.
(Charlottesville, VA)

This presentation describes the speaker's migration to the United States from a Muslim-Turkish culture, his interdisciplinary team that for three decades brought enemy representatives together for long-term dialogues, and the role cultural and historical elements play in international relations. Although Freud was pessimistic about the role of psychoanalysis in taming malignant prejudice shared by thousands or millions of people, Dr. Volkan draws on his observations to define psychological concepts that illustrate how large groups relate to one another in times of peace and conflict and explores psychoanalytically informed strategies for diplomacy.

DAILY SCHEDULE

9:45 a.m.-11:15 a.m. (continued)

After attending this session, participants should be able to recognize how threats against large-group identity assume the central role in initiating and maintaining malignant prejudice and massive sadism; appraise the cultural/historical consequences of shared regression, internalization, externalization, and difficulty in mourning; plan psychoanalytically informed strategies for peaceful coexistence; and explain the intertwining of internal and external wars in individuals.

10:00 a.m.-12:00 noon

Committee Sponsored Workshop: COPE Workshop on Classroom Teaching

Chair &

Presenter: Gerald A. Melchiode, M.D. (Dallas, TX)

The mission is to help us develop as teachers by providing a safe place to share teaching problems, resources and techniques. We hope to consolidate our identities as analyst teachers and to interact with a network of committed teachers. Our goal is to make our students and us lifetime, critical and deep learners. We warmly welcome all who wish to improve teaching and learning.

Committee Sponsored Workshop: Workshop On Psychotherapy Training

Chairs: Alan Pollack, M.D. (Newton, MA)
Sally Rosenberg, D.O.
(West Bloomfield, MI)

This workshop gathers representatives from all the Institutes/Societies together to discuss psychotherapy teaching programs. Our goals are to learn about each other's programs, to share problems and solutions, to discover new ideas and methods, and to maintain channels for continued communication concerning psychotherapy training within the components of APsaA. The workshop is also of value to those Institutes/Societies that do not currently offer psychotherapy training, but may wish to consider the possibility of establishing a program in the future.

11:00 a.m.-3:00 p.m.

Library of Congress: Freud Archives

APsaA is very proud to announce a special exhibit on Sigmund Freud taking place at the Library of Congress. This exhibit was organized by member Dr. Harold Blum, Executive Director, Sigmund Freud Archives of the Library of Congress specifically in

celebration of the 100th anniversaries of the American Psychoanalytic Association and the International Psychoanalytical Association and to coincide with the 99th Annual Meeting taking place in Washington. A select representation of historical documents and mementos will be available for viewing. Home movies of Freud can be viewed at the Moving Image section of the Library. The exhibit will be available for viewing only between the hours of 11:00 a.m. and 3:00 p.m. The Library of Congress is easy to get to by the Metro or cab.

Directions to Library of Congress by the Metro: Exit hotel on 9th Street. Walk down 9th Street and take a left onto H Street. Continue on to 7th Street and enter Metro. Take Red Line to Metro Center towards Shady Grove. At Metro Center, switch to the Orange Line towards New Carrollton Take Orange Line to Capitol South Metro Station. Follow signs to Library of Congress.

12:00 noon-1:30 p.m.

Committee Sponsored Workshop: Workshop On Psychoanalytic Practice CANCELLED

2:00 p.m.-3:30 p.m.

Psychoanalysis and Health Care Reform: Protecting Your Patients, Protecting Your Profession (formerly Spotlight on Capitol Hill)

Note: This program is intended to satisfy the requirements of those states that require CME credits in the area of risk management or medical ethics for medical license renewal, but the final judgment for such qualification is made by each state medical board.

Presenter: James C. Pyles* (Washington, DC)

This meeting will focus on some of the crucial health legislation currently being considered in Washington, and how it will directly affect your practice. Hear how APsaA has become one of the most influential and respected professional associations in the country on issues of significance to psychodynamic therapists in all three branches of federal and state government — the legislative, judicial and executive. Become aware of the challenges ahead and learn how you can make a positive difference.

DAILY SCHEDULE

2:00 p.m.-3:30 p.m. (continued)

After attending this session, participants should be able to better protect the privacy of the health information of their clients and themselves. Participants will learn how to handle requests and demands for information by third parties, such as insurance companies, legal entities, and professional agencies. Participants will also learn how to deal with HIPAA regulations.

2:00 p.m.-4:30 p.m.

Special Program #2 for Psychiatric Residents, Psychology and Social Work Students: Shared Treatments — Psychopharmacology and Psychotherapy: Who Does What, and Why? CEC

Chair: Charles L. Amrhein, Psy.D.* (Bronx, NY)
Presenter: Jeb T. Fowler, M.A.* (Cambridge, MA)
Faculty: Adele Tutter, M.D., Ph.D.
 (Dobbs Ferry, NY)

Discussion will focus on situations in which treatment is divided between a psychotherapist and a medicating psychiatrist. Are there specific indications for — or against — dividing talk therapy from psychopharmacology? What happens to the dynamics of the treatment situation — including the transference — when two clinicians share a single case in this way?

After attending this session, participants should be able to evaluate the potential advantages, disadvantages, and dynamic complexities of treatments shared between a psychotherapist and a medicating psychiatrist.

2:00 p.m.-5:00 p.m.

Panel I: How do Contemporary Analysts Treat the Past? CEC

Chair: Joseph D. Lichtenberg, M.D.
 (Bethesda, MD)
Panelists: Darlene B. Ehrenberg, Ph.D.*
 (New York, NY)
 Glen O. Gabbard, M.D. (Houston, TX)
 Alexandra Harrison, M.D.
 (Cambridge, MA)
Reporter: Melvin Bornstein, M.D. (Birmingham, MI)

The significance of recovering, freeing from repression, and/or reconstructing memories of the past has been central to psychoanalysis since its beginning with Breuer and Freud. Gradually the centrality of bringing the past into full consciousness as a major means of obtaining therapeutic effect has faded in the minds of several groups within the analytic world.

For some, emphasis has shifted to working primarily in the present, conceptualizing the past only as it exists in the present. For some, the view of the analyst as interpreter of the past has shifted to the analyst as co-constructor of whatever view of the past emerges. The panelists will offer their perspective on these changes in theory and practice.

After attending this session, participants should be able to identify and evaluate differing views panelists hold of the significance and clinical emphasis on patient's past experience and how the differing approach to the past can enhance therapeutic action.

2:00 p.m.-5:00 p.m.

University Forum: Shakespeare's King Lear CEC

Moderator: Paul Schwaber, Ph.D. (Hamden, CT)
Presenters: Meredith Skura,* Libby Shearn Moody
 Professor of English, Rice University
 Michael Mack,* Associate Professor of
 English and Director of the University
 Honors Program at The Catholic
 University of America
Respondent: Henry F. Smith, M.D. (Cambridge, MA)

Shakespeare's great tragedy of the decline, madness and death of a fabled king presents torments of ageing and judgment that unleash rivalries among his daughters devastating to both family and kingdom. Lear's decline is paralleled, moreover, by the Earl of Gloucester's erring judgment of his two sons, one legitimate and the other a bastard. What these two old men of crumbling stature learn about responsibility, gratitude and love, Lear through madness and Gloucester in sadness, and what the play shows of family dynamics, of a land lacking in worthy governance, and of resourceful survival in the circumstances invite psychoanalytic attention. We are fortunate to have two celebrated scholar-teachers, each an expert on Shakespeare, Professors Meredith Skura (Rice University) and Michael Mack (Catholic University), to discuss the play and its resonances with us. Dr. Henry Smith will offer commentary and Dr. Paul Schwaber will moderate.

Those attending are asked to read the play in advance and join in the discussion. After attending this session, participants should be able to recognize the ways a great and ranging work of literary art bears on and tests psychoanalysis. They will be able to characterize how psychoanalytic knowledge helps to illuminate the play and how interactions of narcissism and love, wisdom and folly, and tradition and newness play a pivotal role.

DAILY SCHEDULE

2:00 p.m.-5:00 p.m.

Scientific Papers: Section I **CEC**

Chair: Ruth S. Fischer, M.D. (Bryn Mawr, PA)

Paper 1: 2:00 p.m.-3:30 p.m.

The Good Grandparent: Transference and Countertransference Considerations

Author: Ruth Imber, Ph.D.* (New York, NY)

Discussant: Paul H. Ornstein, M.D. (Brookline, MA)

Psychoanalysis has paid scant attention to grandparenthood. This paper will present clinical material to illustrate the transference and reciprocal countertransference phenomenon of what will be called the 'good grandparent'. It is suggested that this is not an uncommon experience when treating patients who are parents. While the occurrence of a grandparent transference may occur with some frequency it is not always recognized as such.

When patients seek support, mirroring and general encouragement for their parenting skills they may be demonstrating a legitimate need which should not be rejected out of hand by analysts.

After participating in this session, participants should be able to identify patients who may benefit from analytic support for their parenting. At the same time participants should be able to recognize potential pitfalls to this approach.

Paper 2: 3:30 p.m.-5:00 p.m.

Reflections on Heinz Kohut's last presentation, *On Empathy, 1981: Its impact on my own pathway**

Author: Evelyn A. Schwaber, M.D.
(Brookline, MA)

Discussant: Anna Ornstein, M.D. (Brookline, MA)

Kohut's last presentation, 1981, completes the circle in the spotlight he shone, since 1959, on the concept of empathy and its fundamental nature within psychoanalytic observation and data-gathering. My own pathway in analytic training, molded particularly in comparative supervisory encounters, led me to recognize the extraordinary power in grappling with the implications in Freud's groundbreaking discovery, defining the domain of psychoanalysis: "psychic reality" — that is, inner reality — "as the decisive kind." Empathy, understood not as a theory-specific or technical stance, but as intrinsic to our mode of listening and observation, may then be viewed as a central dimension illuminating this intrapsychic domain — our psychoanalytic data base.

Clinical examples including citations from the work of Freud and of Kohut and commentary from the late Japanese psychoanalyst, Takeo Doi, are offered for further elaboration.

After participating in this session, participants should be able to gain added consideration of the concept of empathy — as illuminated by Kohut — as mode of observation and data-gathering, reflect further on the more profound dimensions of its relationship to Freud's discovery of psychic reality as our domain of inquiry, and locate added implications thereby for the nature of our listening and of our use of theory.

*published in Ornstein, P., 1984, *The Search for the Self*, vol. 4: 525-535

3:00 p.m.-5:00 p.m.

Committee Sponsored Workshop: Ethics Workshop

Chair: Rion Hart, Ph.D. (Houston, TX)

This workshop is open to all interested members, although members of the local Ethics Committees are especially encouraged to attend since experience and familiarity with the complex process of responding to complaints can minimize the myriad of problems that inevitably arise when a fellow member's conduct is questioned. The primary focus for the June meeting will be presentation of a model for responding to a complaint, not just in terms of procedure, but also emphasizing attention to the emotional impact and needs of the parties involved.

5:15 p.m.-6:45 p.m.



Gertrude and Ernst Ticho Memorial Lecture:

Melodies In My Mind:

The Polyphony of Mental Life **CEC**

Chair: Warren Procci, M.D., President
(Pasadena, CA)

Introducer: Glen O. Gabbard, M.D. (Houston, TX)

Speaker: Julie Jaffee Nagel, Ph.D. (Ann Arbor, MI)

The Gertrude and Ernst Ticho Memorial Lecture is given by an early to mid-career analyst who is currently making contributions to psychoanalysis and shows promise of making significant future contributions to psychoanalytic science, practice, and thought. The lecture is supported by a generous grant from the Gertrude and Ernst Ticho Charitable Foundation.

DAILY SCHEDULE

5:15 p.m.-6:45 p.m. (continued)

The melody in my mind is the "Tonight Ensemble" from Leonard Bernstein's *West Side Story*. This will be discussed from both musical and psychoanalytic frameworks and illustrate how this music expresses disparate feelings, thoughts, and moods simultaneously — or — polyphonically. Emphasis will be focused on the formal aspects of how music and psychoanalysis contribute to the psychic organization of the complex counterpoint embedded in the melodies of mental life.

After attending this session, participants should be able to comprehend that music is a point of entry into affect and unconscious processes; recognize that music and psychoanalysis share the concepts of multiple function, overdetermination, and infinite displacement. Participants should also be able to appreciate that music can contribute to the organization of psychic life and understand that music and psychoanalytic concepts mutually inform and can enhance each other both inside and outside consulting rooms and concert halls

6:45 p.m.-8:30 p.m.

Social Event: Gertrude and Ernst Ticho Memorial Lecture Reception

All are invited to attend this reception sponsored by the Ernst & Gertrude Ticho Charitable Foundation.

SATURDAY, JUNE 12, 2010

7:00 a.m.-9:00 a.m.

Discussion with the Committee on Scientific Activities: HIPAA Compliant Computing for Psychoanalysts **CEC**

Co-chairs: Lee D. Brauer, M.D. (Hartford, CT)
Sheila Hafter Gray, M.D.
(Washington, DC)

The meeting will include a presentation of the current HIPAA requirement for computers to insure patient privacy. The particular steps needed to protect the confidentiality of the patient data and their identities on computers, PDAs and phones will be considered. The special requirements for transmitting patient information by electronic means will be discussed. The relationships between HIPAA requirements and the need for guarantees of privacy for psychoanalytic, psychotherapeutic and medical treatments will be discussed.

After attending this session, participants should be able to define and describe the current HIPAA requirements and the technical steps necessary to insure compliance with these requirements, including encryption techniques for disks and files, and secure means of transmitting data. They will also consider the impact of these procedures on the clinical psychoanalytic situation.

7:30 a.m.-8:45 a.m.

Coffee with a Distinguished Analyst:

Stephen B. Bernstein, M.D. **CEC** **CND**

Chair: Carmela Perez, Ph.D. (New York, NY)

At this round-table discussion we will discuss developing an analytic practice with Dr. Stephen Bernstein, who wrote the initial article on the transition from therapy to analysis in 1983, and whose article "Treatment Preparatory to Psychoanalysis": A Reconsideration After Twenty-Five Years" was recently published in the Journal of the American Psychoanalytic Association (58/1/10). Dr. Bernstein is a Training and Supervising Analyst at the Boston Psychoanalytic Society and Institute and has written articles on practice development and the motivation of patients for psychoanalysis.

After attending this session, participants should be able to comprehend the reasons why many patients are resistant to analysis as well as recognize the interpretive and non-interpretive means to help patients explore the idea of analysis. They will be able to define and describe when a patient may be ready for a recommendation for analysis and how to make it; and ways to demonstrate to referral sources and to the public the accessibility, expertise, and professionalism of the analyst.

9:00 a.m.-11:30 a.m.

Special Program #3 for Psychiatric Residents, Psychology and Social Work Students:

When your patient is like you **CEC**

Chair: Lotte Smith-Hansen, M.S., M.A.*
(Cambridge, MA)

Presenter: Cecil R. Webster, Jr., M.D.*
(Houston, TX)

Faculty: Kimberlyn Leary, Ph.D. (Cambridge MA)

In this seminar we will discuss how similarities between therapist and patient such as age, sex, race, level of education affect treatment.

After attending this seminar participants will be able to recognize the impact of shared characteristics of patient and therapist on the process of psychotherapy.

DAILY SCHEDULE

9:00 a.m.-12:00 noon

Child and Adolescent Panel: Psychoanalysis with Children and Adolescents who have a Chronic Physical Illness **CEC**

Chair: Christine C. Kieffer, Ph.D., ABPP
(Chicago, IL)

Case

Presenter: Helene Keable, M.D. (New York, NY)

Discussants: Monisha C. Akhtar, Ph.D. (Ardmore, PA)
Robert Galatzer-Levy, M.D. (Chicago, IL)

This panel will examine some of the intricate issues associated with the analysis of children and adolescents who have grown up coping with a chronic physical illness. One of the panelists will present case material from an analysis of an adolescent girl with juvenile diabetes, with a particular focus on a transference enactment that occurred after a termination date was set. The discussants will highlight some of the special developmental and technical issues pertinent to such a case.

After attending this session, participants should be able to: 1) identify several ways in which common developmental themes in psychoanalysis will be highlighted in children and adolescents with a chronic physical illness, 2) understand how these issues may be expressed in enactments between analyst and patient, 3) understand how the termination process may be affected by these issues.

Panel II: Clinical Challenges: How the People in the Patient's Life Inhabit our Minds **CEC**

Chair: Henry F. Smith, M.D. (Cambridge, MA)

Panelists: Dr. John Steiner (London, England)
Shelley Orgel, M.D. (New York, NY)
Nancy Kullish, Ph.D. (Birmingham, MI)

Reporter: Catherine R. Kimble, M.D.
(Lexington, MA)

In every analysis, the analyst develops an internal relationship with the patient's 'objects', that is the people — parents, spouses, children — in the patient's life and mind. Sometimes these figures seem to inhabit the analyst's mind as a congenial and tentative source of data, but sometimes the analyst may feel invaded and preoccupied with them; alternatively, they may seem strangely absent or formless. Such experiences always reveal something about the patient's internal world, but as the analyst's view of these figures and his or her relationship to them become relatively fixed, it can be a challenge to listen flexibly to the patient's psychic reality. This panel will explore the varieties of experience analysts have with the 'objects' in the patient's life.

After attending this session, participants should be able to (1) identify various ways the people in the patient's life inhabit the analyst's mind, (2) become aware of the variety of ways analysts use these 'objects' as a source of data about the patient's internal world, (3) recognize some of the pitfalls in this process, as the analyst's view of these figures becomes more or less fixed.

12:00 noon-1:30 p.m.

Symposium I: Psychoanalysis and Space **CEC**

Chair: Virginia Blum, Ph.D. (Lexington, KY)

Presenters: Sheila L. Cavanagh*
(Associate Professor of Sociology,
York University, Toronto, Canada)
Paul Kingsbury* (Assistant Professor
of Geography, Simon Fraser University,
Vancouver, Canada)
Heidi Nast* (Professor of International
Studies, DePaul University)
Dr. Anna Secor* (Associate Professor
of Geography, University of Kentucky,
Lexington, Kentucky)

Spatial analogies are central to psychoanalysis from Freud's *The Project for a Scientific Psychology* of 1895 on, and yet there remains a dearth of scholarship on not only the constitutive role of space to psychoanalytic theory but also more specifically on why (and to what extent) psychical functioning is so often represented spatially. The presenters in this symposium (from the social sciences and humanities) specialize in psychoanalytic theory in literary theory, human geography, and sociology, and come together to address, from their respective disciplinary perspectives, the relationship between psychic and social space.

After attending this session, participants should be able to: 1) comprehend what an emphasis on social space brings to psychoanalytic technique and practice, including but not limited to, interpretation, therapeutic setting, and the geopolitics of developmental stages; 2) define ways in which psychoanalytic perspectives are applicable to notions of social space; 3) recognize the ways in which material spaces (e.g. a subway, urban vs. rural) reflect and shape psychic space. There will be ample time for audience discussion.

DAILY SCHEDULE


2:00 p.m.-5:00 p.m.

Panel III: Thought, Word and Action:**Can The Analyst Think While Enacting? **

Chair: Jennifer Stuart, Ph.D. (New York, NY)
Panelists: Dr. John Steiner (London, England)
 Henry F. Smith, M.D. (Cambridge, MA)
Discussant: Donald B. Moss, M.D. (New York, NY)

Against the press of both our patients' wishes and our own, we do our best to think before we speak; and to keep on thinking as we speak. Inevitably, though, we discover some of our own thoughts only after voicing them; and we find that some of our words have the force of (consciously) unintended, wish-fulfilling action. How might we regard expressions of the analyst's thoughts in words and actions that bypass conscious intention? Are these intrinsic features of analytic process, best accepted and embraced — or are they lapses from an analytic ideal, best overcome as quickly as possible? Does enactment obliterate thinking, or is it possible to think *while* enacting? Panelists will use detailed clinical process to illustrate contrasting perspectives on relations among thought, word, and action in psychoanalysis.

After attending this session, participants should be able to (1) recognize the potential for subtle forms of enactment in ordinary clinical process; (2) distinguish among several contemporary perspectives on enactment; and (3) assess their own views in relation to those perspectives.

Meet-The-Author: Donnel Stern, Ph.D.
Partners in Thought: Working in unformulated experience, dissociation and enactment 

Author: Donnel Stern, Ph.D. (New York, NY)
Discussants: Stanley J. Coen, M.D. (New York, NY)
 John C. Foehl, Ph.D.
 (Newton Centre, MA)

This Meet-the-Author session will center on *Partners in Thought*, a book by Donnel B. Stern, Ph.D. Dr. Stern will summarize the book, followed by commentaries by Dr. Stanley Coen. Discussion will focus on the concepts of, unformulated experience, dissociation, and enactment, explaining them and comparing them to more traditional conceptions of psychoanalytic practice, the unconscious, repression, transference and countertransference. Modes of intervention based on these ideas will be also be presented and discussed.

After attending this session, participants should be able to: characterize the dissociation model of mind and unformulated, or potential, experience and differentiate these ideas from repression-based models in which the unconscious is defined as a reservoir

of symbolized meanings; outline the significance of continuous unconscious mutual influence in the formulation of both the patient's and the analyst's experience in the consulting room; recognize the particular phenomenon being defined in this session as enactment, and use this conception to create clinical interventions that address the enactment.

Scientific Papers: Section II 

Chair: Marion M. Oliner, Ph.D.* (New York, NY)

Paper 1: 2:00 p.m.-3:30 p.m.**Reframing Evil: *Thoughts for our Times***

Author: Maxine K. Anderson, M.D. (Seattle, WA)
Discussant: Henry J. Friedman, M.D.
 (Cambridge, MA)

The age-old question of evil is approached from a 20th century context which explores evil from an 'evil-doing' perspective — from H Arendt's 'banality of evil,' through social psychological research about the coercive power of social forces, but also what internal circumstances can threaten to destabilize our fully functioning minds, thus allowing the re-emergence of ancient, pre-thinking mental states which can so easily imprison us within our own inhumanity. The overall suggestion about reframing evil considers how readily we can succumb to the entropic pull toward our inhuman potential and that rescue from this state involves our clear-eyed, sturdy, compassionate recognition of the processes involved and the parts we play in those processes.

After attending this session, participants should be able to recognize external coercive forces but also internal vulnerabilities which foster descent and entrapment within our inhumanity; but as well, be able to articulate the sources of rescue from this 'evil-doing' state of mind.

Paper 2: 3:30 p.m.-5:00 p.m.**The Rules of Disengagement: Brain and Mind in the Analytic Treatment of Children and Adults with Asperger's Syndrome**

Author: Michael L. Krass, Ph.D.*
 (Falls Church, VA)
Discussant: William M. Singletary, M.D.
 (Ardmore, PA)

The person with Asperger's syndrome embodies a highly complex interaction between deficit and conflict, nature and nurture, brain and mind. This paper presents evidence that suggests that the pathogenesis of Asperger's syndrome derives from an interplay of neurological and unconscious factors.

DAILY SCHEDULE

2:00 p.m.-5:00 p.m. (continued)

The paper shows that an appreciation of this complexity is essential in the analytic treatment of patients with Asperger's. Case material from the analysis of a woman and the analytic play therapy with a latency-aged boy, both having Asperger's, will be presented to demonstrate technical approaches that take into account the intricate weave that typifies the psychic life of such patients.

After participating in this session, participants should be able to: 1) integrate information about neurological development in Asperger's with analytic knowledge about the unconscious components of early development, 2) apply this understanding of the complex nature of the pathogenesis of Asperger's to analytic treatment of adults and children.

SUNDAY, JUNE 13, 2010

9:00 a.m.-11:30 a.m.

Special Program #4 for Psychiatric Residents, Psychology and Social Work Students:

Working with Parents

Chair: Edwin D. Williamson, M.D.
(New Haven, CT)*

Presenter: Elissa N. Baldwin, LCSW (Durham, NC)*

*Faculty: Kerry Kelly Novick (Ann Arbor, MI)
Jack Novick, Ph.D. (Ann Arbor, MI)*

In this seminar, we will discuss the empirical finding that working with parents makes therapy work. There are many ways therapists and analysts have traditionally worked with parents, ranging from not at all to parent guidance to referral for individual, couples or family therapy. A new model of "concurrent parent work" will be described and applied to a clinical case presentation. Discussion will address the considerations that guide a clinician's choice of modality(ies) for work with the parents of a child patient and the potential complexities and benefits of such work.

After attending this session, participants should be able to assess the relevance and utility of the various models of parent work, and be familiar with the new model of "concurrent parent work."

9:00 a.m.-12:00 noon

Panel IV: Psycho-analytically Informed Psychotherapy for Psychosis

Chair: Eric R. Marcus, M.D. (New York, NY)

*Panelists: Michael D. Garrett, M.D. (New York, NY)
Andrew Lotterman, M.D. (New York, NY)
Marlene Kocan, Ph.D. (Columbus, OH)*

*Reporter: David A.S. Garfield, M.D.
(Highland Park, IL)*

This panel will discuss the new psychotherapy approaches to psychosis that have emerged in recent years based on psycho-analytic and psycho-dynamic principles. We will discuss a modern ego psychology approach, a psycho-dynamically informed CBT approach, a schizophrenia specific approach, and a child psychosis developmental approach in an adult patient. Panelists are all actively working with psychotic patients.

After attending this session, participants should be able to identify the latest approaches to working dynamically with psychotic patients and should be able to increase the comfort zone in working with such patients. Participants will be able to recognize techniques for establishing the therapeutic alliance, strengthening observing ego and reality testing, and working with the delusional system or hallucinatory experience.

NAME BADGE POLICY

Name badges are required to attend all sections of the Scientific Program.

Your badge is your passport to attend the Program sessions and the only way we can tell you have registered for the Meeting.

Badges must be worn in plain sight to gain access to APsaA's Meeting. Individuals who are not wearing their name badge or not wearing the correct name badge will be asked to properly register for the Meeting.

A GLOSSARY TO THE SCIENTIFIC PROGRAM

ONLY THESE SESSIONS ARE ELIGIBLE FOR CONTINUING PROFESSIONAL EDUCATION CREDIT

Discussion Groups

Wednesday & Thursday 9:00 a.m.-11:30 a.m.
. 2:00 p.m.-4:30 p.m.
. 4:45 p.m.-7:15 p.m.

Permits a small number of participants to discuss a topic of mutual interest. Discussion groups meet regularly at bi-annual meetings. This continuity offers the opportunity to build collaborations with colleagues nationally and internationally. New participants are welcome to each group.

Senior Analyst Presentation Program

Wednesday 9:00 a.m.-12:00 noon
. 2:00 p.m.-4:30 p.m.

A senior analyst presents process material illustrating his/her own analytic work. Registration for the Senior Analyst Presentation is limited to candidates, affiliates and students. Please contact Ethan M. Grumbach, Ph.D. (948 South Citrus Ave., Los Angeles, CA 90036 or grumbach@pacbell.net) indicating your interest to participate and preregister for the presentation. If you are a candidate or student, please mention where your studies take place. Space is limited, so please preregister.

Two-Day Clinical Workshops

Wednesday & Thursday 4:45 p.m.-7:00 p.m.

Demonstrates and explores the specific manner in which a distinguished psychoanalyst listens to clinical material and conceptualizes process and technique.

Pre-Registration is required. Seats are limited.

Research Seminar

Wednesday 4:45 p.m.-7:15 p.m.

Fellows of the American Psychoanalytic Association briefly present their current research studies in psychoanalytic psychotherapy, psychoanalysis, and applied psychoanalysis.

Oral History Workshop

Thursday 9:00 a.m.-12:30 p.m.

Explores the history of psychoanalysis through presentations by analysts and related professionals.

Affiliates' Forum

Thursday 2:00 p.m.-4:30 p.m.

Devoted to the demonstration and exploration of innovative techniques in psychoanalytic education.

Special Programs for Psychiatric Residents, Psychology and Social Work Students

Thursday 4:45 p.m.-7:15 p.m.

Friday 2:00 p.m.-4:30 p.m.

Saturday & Sunday 9:00 a.m.-11:30 a.m.

Four sessions directed to Psychiatric Residents, Psychology and Social Work Students but open to all registrants. The format is a lecture on a particular topic by the designated faculty member, followed by a case presentation by a participant in the APsA Fellowship Program.

Film Workshop

Thursday 7:30 p.m.-10:00 p.m.

Films that are related thematically through their psychoanalytic relevance are shown and interpreted by formal discussants and the audience. Related discussion group takes place on Wednesday from 7:30 p.m.-10:00 p.m.

Plenary Address

Friday 9:45 a.m.-11:15 a.m.

Major addresses by outstanding psychoanalysts or other professionals.

Symposia

Saturday 12:00 noon-1:30 p.m.

This format explores the interface between psychoanalysis, society and related disciplines. Many attempt to demonstrate how psychoanalytic thinking can be applied to non-psychoanalytic settings.

Panels

Friday 2:00 p.m.-5:00 p.m.

Saturday 9:00 a.m.-12:00 noon

. 2:00 p.m.-5:00 p.m.

Sunday 9:00 a.m.-12:00 noon

Panels bring together nationally recognized psychoanalysts to present papers on clinical and theoretical topics. Active interchange with the panelists is encouraged in response to questions from the audience.

Scientific Papers

Friday 2:00 p.m.-5:00 p.m.

Saturday 9:00 a.m.-12:00 noon

. 2:00 p.m.-5:00 p.m.

Sunday 9:00 a.m.-12:00 noon

Selected by a juried review process, papers are presented by the author and considered by a formal discussant. Ample time is allotted for the audience to respond.

University Forum

Friday 2:00 p.m.-5:00 p.m.

Two psychoanalysts will draw out two academic presenters whose work, not yet known to most psychoanalysts, offers exciting possibilities for dialogue across disciplines. Here is a chance for us to learn from distinguished academic colleagues and to influence them as well.

Psychoanalysis and Health Care Reform

Friday 2:00 p.m.-3:30 p.m.

Focuses on crucial health legislation currently being considered in Washington, and how it will directly affect your practice.

Gertrude and Ernst Ticho Memorial Lecture

Friday 5:15 p.m.-6:45 p.m.

The Gertrude and Ernst Ticho Memorial Lecture is given by an early to mid-career analyst who is currently making contributions to psychoanalysis and shows promise of making significant future contributions to psychoanalytic science, practice, and thought. The lecture is supported by a generous grant from the Gertrude and Ernst Ticho Charitable Foundation.

Discussion with the Committee on Scientific Activities

Saturday 7:00 a.m.-9:00 a.m.

Interested participants discuss the use of personal computers for psychoanalytic studies.

APsAA OFFICERS, PROGRAM COMMITTEE AND STAFF

OFFICERS

Prudence Gourguechon, M.D.	President
Warren R. Procci, M.D.	President-Elect
Robert M. Galatzer-Levy, M.D.	Secretary
Judith S. Schachter, M.D.	Treasurer

BOARD ON PROFESSIONAL STANDARDS

Calvern E. Narcisi, M.D.	BOPS Co-Chair, Co-Secretary
Myrna C. Weiss, M.D.	BOPS Co-Chair, Co-Secretary

PROGRAM COMMITTEE



Henry F. Smith, M.D.,
Chair

Sharon Alperovitz, M.S.W.
Rosemary H. Balsam, M.D.
Anne Buchinski, M.D.
Irene Cairo, M.D.
Nancy J. Chodorow, Ph.D.
Phoebe A. Cirio, M.S.W., LCSW
Stanley J. Coen, M.D.
Henry J. Friedman, M.D.
Lawrence Friedman, M.D.
Glen O. Gabbard, M.D.

Melinda Gellman, Ph.D.*
Andrew J. Gerber, M.D., Ph.D.
Jack Giuliani, Ph.D.
Peter L. Goldberg, Ph.D.
Gary Grossman, Ph.D.
Margaret-Ann Hanly, Ph.D.*
Adrienne Harris, Ph.D.*
Christine C. Kieffer, Ph.D.
Nancy Kulish, Ph.D.
Kimberlyn Leary, Ph.D.
Joseph D. Lichtenberg, M.D.
Bonnie E. Litowitz, Ph.D.
William Massicotte, Ph.D.
*(Rep. Canadian Psa. Soc.)**
Donald B. Moss, M.D.
Warren S. Poland, M.D.

Alan Pollack, M.D.
Jeffrey Prager, Ph.D.
Steven Roose, M.D.
Dominique Scarfone, M.D.*
Stephen Seligman, D.M.H.
Jennifer Stuart, Ph.D.
Stuart W. Twemlow, M.D.
Joan Wheelis, M.D.
Sharon Zalusky-Blum, Ph.D.
Richard B. Zimmer, M.D.
Aneil M. Shirke, M.D., Ph.D.
(Continuing Education Liaison)
Steven T. Levy, M.D. *(Ex Officio)*

**indicates non member*

STAFF

Dean K. Stein	Executive Director
Extension 30, deankstein@apsa.org	
Chris Broughton	Continuing Education & Meetings Registration Manager
Extension 19, cbroughton@apsa.org	
Brian Canty	Manager, Computer Information Services
Extension 17, bcanty@apsa.org	
Sherkima Edwards	Accounts Receivable Clerk
Extension 15, sedwards@apsa.org	
Tina Faison	Administrative Assistant to Executive Director
Extension 23, tfaison@apsa.org	
Diana Franklin	Assistant to the Scientific Program & Meetings Director
Extension 28, meetadmin@apsa.org	
Carolyn Gatto	Scientific Program & Meetings Director
Extension 20, cgatto@apsa.org	
James Guimaraes	Program Coordinator
Extension 12, jguimaraes@apsa.org	
Jake Lynn	Director of Public Affairs
Extension 29, jlynn@apsa.org	
Johannes Neuer	Web Producer
jneuer@apsa.org	
Nerissa Steele-Browne	Manager, Accounting Department
Extension 16, nsteele@apsa.org	
Debra Steinke Wardell	Manager, Education and Membership Services
Extension 26, dsteinke@apsa.org	
Nikita Turner	Membership Services Assistant
Extension 18, nturner@apsa.org	

PROGRAM PARTICIPANTS

A

Graciela E. Abelin-Sas, M.D.	18
Monisha C. Akhtar, Ph.D.	29
Carlos Almeida, M.D.	12
Sharon Alperovitz, M.S.W.	10
Charles L. Amrhein, Psy.D.	26
Maxine K. Anderson, M.D.	30
Lee I. Ascherman, M.D.	12
Paula G. Atkeson, Ph.D.	6, 8

B

Bernard W. Bail, M.D.	7, 15
Elissa N. Baldwin, LCSW	31
John Barnhill, M.D.	12
Francis D. Baudry, M.D.	9
Ralph Beaumont, M.D.	18
Stephen H. Behnke, Ph.D.	8
Lauren A. Berg, M.A., L.P.A.	14
Ami S. Berkowitz, M.Ed.	19
Stephen B. Bernstein, M.D.	17, 22
Beverly H. Betz, M.S.W., M.Ed.	10
Mia Biran, Ph.D.	23
Vivian Blotnick Pender, M.D.	12
Curtis Virginia Blum, Ph.D.	29
Sharon Blum, Ph.D.	10
Ellen G. Blumenthal, M.D.	17
Melvin Bornstein, M.D.	17, 22, 26
Lee D. Brauer, M.D.	28
Elizabeth Brett, Ph.D.	6
R. Curtis Bristol, M.D.	12, 13, 21
Abbot A. Bronstein, Ph.D.	14

C

Irene Cairo, M.D.	10, 20
Joanne E. Callan, Ph.D.	17
Phyllis J. Cath, M.D.	15
Sheila L. Cavanagh	29
Nancy J. Chodorow, Ph.D.	10
Lois W. Choi-Kain, M.D.	12
Phoebe A. Cirio, M.S.W., LCSW	7, 17, 22
Norman A. Clemens, M.D.	23
Stanley J. Coen, M.D.	30

Joseph P. Collins, D.O.	11
David E. Cooper, Ph.D.	8

D

Hilli Dagony-Clark, Psy.D.	7, 23
Mary Davis, M.D.	19
Todd Davison, M.D.	21
Diana Diamond, Ph.D.	21
David R. Dietrich, Ph.D.	14
Susan Donner, M.D.	6

E

Darlene B. Ehrenberg, Ph.D.	26
Carla Eliot-Neely, Ph.D.	19
Hossein M. Etezady, M.D.	19

F

Ruth S. Fischer, M.D.	27
Charles P. Fisher, M.D.	12, 22
Lana P. Fishkin, M.D.	23
George G. Fishman, M.D.	22
John C. Foehl, Ph.D.	30
Jeb T. Fowler, M.A.	26
Richard P. Fox, M.D.	18
Peter J. Freed, M.D.	22
Carey D. Friedman, M.D.	12
Henry J. Friedman, M.D.	30

G

Glen O. Gabbard, M.D.	26, 27
Robert M. Galatzer-Levy, M.D.	11, 29
Erik Gann, M.D.	17
David A.S. Garfield, M.D.	31
Suzanne M. Garfinkle, M.D.	12
Michael D. Garrett, M.D.	31
Robert A. Glick, M.D.	11, 17
Steven H. Goldberg, M.D.	20
Nancy R. Goodman, Ph.D.	11
Prudence Gourguechon, M.D.	24
Sheila Hafter Gray, M.D.	28

Gary Grossman, Ph.D.	14
Ethan M. Grumbach, Ph.D.	7, 12, 16

H

Janet R. Hadda, Ph.D.	19
Paula J. Hamm, M.A., L.P.C.	7
Alysia Y. Han, M.D.	23
Alexandra Harrison, M.D.	18, 26
Rion Hart, Ph.D.	27
Sandra G. Hershberg, M.D.	13
Richard K. Hertel, Ph.D.	21
Paul C. Holinger, M.D.	7, 20
Deanna Holtzman, Ph.D.	11

I

Ruth Imber, Ph.D.	27
Andrei Irmia, Ph.D.	12

J

Daniel H. Jacobs, M.D.	6, 23
Jeffrey Jay, Ph.D.	8
Karen M. Johnson, M.D.	7
Kathryn V. Jones, M.D.	17
Leslie Jordan, Ph.D.	10

K

Judy L. Kantrowitz, Ph.D.	7, 20
Ruth Karush, M.D.	6
Joy Kasset, Ph.D.	10
Stan H. Kasten	20
Mae E. Kastor, M.S.W.	14
Helene Keable, M.D.	29
Kelly S. Kearfo Hill, M.D.	12
Barbara Kennedy Roney, M.A., M.S.W.	17
Christine C. Kieffer, Ph.D., ABPP	11, 29
Catherine R. Kimble, M.D.	29
Paul Kingsbury	29
Richard P. Kluff, M.D.	19
Marlene Kocan, Ph.D.	31
Norman V. Kohn, M.D.	22
Bernadette S. Kovach, Ph.D.	11

PROGRAM PARTICIPANTS

Michael L. Krass, Ph.D.	11, 30
Anton O. Kris, M.D.	10
Nancy Kulish, Ph.D.	11, 29

L

Melvin R. Lansky, M.D.	11, 19
Kimberlyn Leary, Ph.D.	28
Phil S. Lebovitz, M.D.	17
Elizabeth Lennihan, LCSW	17
Bruce Levin, M.D.	16
Joseph D. Lichtenberg, M.D.	13, 26
Judith Logue, Ph.D.	8
Zvi Lothane, M.D.	9
Andrew Lotterman, M.D.	31
Jake Lynn	16

M

Michael Mack	26
Katherine MacVicar, M.D.	14
Robin S. Maisel, Psy.D.	10
Mali A. Mann, M.D.	19
Eric R. Marcus, M.D.	31
Elizabeth Marks, M.D.	17
Suzanne M. Meehan, M.D.	23
Gerald A. Melchiodi, M.D.	25
Karen Melikian, Ph.D.	17
Peter Mezan, Ph.D.	18
Carlotta G. Miles, M.D.	24
J. David Miller, M.D.	8
Kathleen R. Miller, Ph.D.	15
Patrick Miller, M.D.	7
Kathleen Moore, Ph.D.	14
Lizbeth Moses, Ph.D.	20
Paul W. Mosher, M.D.	23
Donald B. Moss, M.D.	30

N

Julie Jaffee Nagel, Ph.D.	27
Heidi Nast	29
Aimee Nover, Ph.D.	15
Jack Novick, Ph.D.	31
Kerry Kelly Novick	31

O

Marion M. Oliner, Ph.D.	30
Shelley Orgel, M.D.	10, 29
Anna Ornstein, M.D.	8, 10, 27
Paul H. Ornstein, M.D.	8, 27

P

Jonathan Palmer, M.D.	17, 22
Thomas M. Paris, Ph.D.	15
Charles Parks, Ph.D.	6
Stefan A. Pasternack, M.D.	12
Robert A. Paul, Ph.D.	19
Carmela Perez, Ph.D.	28
Alison C. Phillips, M.D.	22
Ellen Pinsky, Psy.D.	17
Marcia Polansky, M.S.W., Sc.D.	14
Alan Pollack, M.D.	10, 25
Monroe Pray, M.D.	21
Annelle Primm, M.D.	24
Joy Pritts, J.D.	23
Warren Procci	27
James C. Pyles	25
Robert L. Pyles, M.D.	20, 24

R

Gail S. Reed, Ph.D.	9
Carol Reichenenthal, Ph.D.	8, 14
Joseph Reppen, Ph.D.	9
M. Barrie Richmond, M.D.	22
Arthur L. Rosenbaum, M.D.	17, 22
Sally Rosenberg, D.O.	25
Ralph E. Roughton, M.D.	12
Samuel E. Rubin, M.D.	12

S

David E. Scharff, M.D.	6
Jill Savege Scharff, M.D.	6
Erika Schmidt, LCSW	19
Anita G. Schmukler, D.O.	6, 8
Evelyne A. Schwaber, M.D.	18, 27
Paul Schwaber, Ph.D.	26

Anna Secor, M.D.	29
Sweena Seekri, Ph.D.	14
Beth Seelig, M.D.	17
Theodore Shapiro, M.D.	24
Susan Shively, M.D.	23
William M. Singletary, M.D.	30
Bruce H. Sklarew, M.D.	21, 24
Meredith Skura	26
Mark D. Smaller, Ph.D.	16, 19
Henry F. Smith, M.D.	26, 29, 30
Lotte Smith-Hansen, M.S., M.A.	28
Elise W. Snyder, M.D.	23
Rogelio A. Sosnik, M.D.	20
John Steiner, M.D.	10, 29, 30
Donnel Stern, Ph.D.	30
Barbara Stimmel, Ph.D.	16
Jennifer Stuart, Ph.D.	30
Mayer Subrin, M.D.	14

T

Nellie L. Thompson, Ph.D.	15
Adele Tutter, M.D., Ph.D.	26
Isaac Tylim, Psy.D.	12

V

Vamik D. Volkan, M.D.	24
-------------------------------	----

W

Sandra C. Walker, M.D.	24
Ernest Wallwork, Ph.D.	8
Jane Warren, Ph.D.	11
Peggy E. Warren, M.D.	17, 22
Richard Waugaman, M.D.	7, 21
Cecil R. Webster Jr., M.D.	28
Loren A. Weiner, Ph.D.	15
Lissa Weinstein, Ph.D.	21
Edwin D. Williamson, M.D.	31
Leon Wurmser, M.D.	9, 11

Z

Kathryn J. Zerbe, M.D.	14
--------------------------------	----



PEP Psychoanalytic Electronic Publishing

A Fully Searchable Digital Archive of Classic Psychoanalytic Texts

THE NEW PEP ARCHIVE VERSION 9 IS NOW AVAILABLE FOR SALE!

The **THIRTY SEVEN** journals now included in the PEP Archive with the **NEWLY** added content are:

- *American Imago (1939-2005)*
- *Journal of Clinical Psychoanalysis (1992-2003)*
- *Psychoanalysis and History (1999-2007)*
- *Featuring the German Standard Edition, Gesammelte Werke, and all the included Editorial Notes*
- *Two special books, Psychoanalytic Practice: Principles, volume 1 and Psychoanalytic Practice: Clinical Studies, volume 2 by Thomä and Kächele.*

Annual of Psychoanalysis (1973-), Bulletin of the American Psychoanalytic Association (1938-1994), Bulletin of the Anna Freud Centre (1978-1995), Bulletin of the International Psychoanalytic Association (1920-2000), Canadian Journal of Psychoanalysis (1993-), Contemporary Psychoanalysis (1964-), Free Associations (1984-2004), Gender and Psychoanalysis (1996-2001), International Forum of Psychoanalysis (1992-), International Journal of Psycho-Analysis (1920-), International Review of Psycho-Analysis (1974-1992), Journal of Analytical Psychology (1955-), Journal of the American Academy of Psychoanalysis (1973-), Modern Psychoanalysis (1976-), NeuroPsychoanalysis (1999-), Progress in Self Psychology (1985-2004), Psychoanalytic Quarterly (1932-), Psychoanalysis and Contemporary Science (1972-1976), Psychoanalysis and Contemporary Thought (1978-2003), Psychoanalytic Study of the Child (1945-), Psychoanalytic Dialogues (1991-), Psychoanalytic Inquiry (1981-), Psychoanalytic Psychology (1984-), Psychoanalytic Review (1913-), Scandinavian Psychoanalytic Review (1978-2007), Studies in Gender and Sexuality (2000-), L'Annata Psicoanalitica Internazionale (2005-), L'Année Psychanalytique Internationale (2003-), International Journal of Psychoanalytic Self Psychology (2006-), Italian Psychoanalytic Annual (2007-2008), Journal of Analytical Psychology (1955-),

In addition the archive contains Freud's Standard Edition, his correspondence with his major contributors and classic books including the main works of Wilfred Bion, Melanie Klein and Donald Winnicott as well as some of the works of Bowlby, Ferenczi, Jones, Betty Joseph, Milner, Racker, and Wallerstein.

FOR DVD Customers the New V9 pricing is available on the PEP Website at <http://www.p-e-p.org/news.htm> Discounts will be available for pre-publication purchase.

For WEB customers or users of the Free PEP Literature search, the new V9 content is now available to you to search and view. Go to <http://www.pep-web.org/>.

More information. You can find out more information or **ORDER ONLINE at a discount** on our website, www.p-e-p.org. Also, visit our PEPLiteratureSearch, a FREE SEARCH for ALL references found at www.pep-web.org. Only current subscribers will be allowed access to the full text of most Journal Articles up through 2007. Non-subscribers are able to view abstracts, or a sentence or two as well as get bibliographies and those are exportable as well.

PEP PRIVATE TUTORIALS

PEP offers Private Tutorials during the American Psychoanalytic Meetings. Call, fax or e-mail Stephanie Short to get the specifics on booking a tutorial using the contact information below. Private instruction should be arranged in advance if possible. The private tutorial will be adapted to the needs and interests of the participant. You will learn how to use the different search tools, such as searching by context, ranked searches and the advanced query tool. Other functions to be covered include how to print, highlight, annotate, and bookmark. As we enter into the more advanced level, we will develop your search techniques so that you can search meaningfully using logical and Boolean operators and wildcards as well as doing proximity searches.

Private Tutorial: \$100.00 per hour per person. Special group rates for 5 or more people are possible.

Contact Stephanie Short at PEP Customer Service.

Telephone or Fax #: (949) 496-7379

Monday, Tuesday & Saturday 8am to 11am

Thursday 9am to 11am

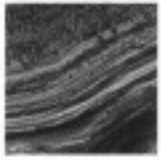
Friday 7am to 10am

Wednesday & Sunday — CLOSED

E-Mail anytime: Steph@p-e-p.org

PLEASE DO NOT CALL THE NATIONAL OFFICE FOR INFORMATION OR TO REGISTER FOR A TUTORIAL.

PEP LIVE DEMONSTRATIONS will take place from Wednesday through Saturday. Times and places for the live demo will be posted at the Meeting.



Frenkel & Co., Inc.
International Insurance Brokers Est. 1878

Serving the
Professional Liability Insurance
needs of the
American Psychoanalytic
Association since 1972

- Professional Liability
- Admitted (A+) Paper
- Business Insurance
- Personal Insurance including
Homeowners/Automobile
- Directors & Officers
- Employment Practices Liability

Program Administrator
Margaret Church
201.356.3422
mchurch@frenkel.com

Read JAPA Online at japa.sagepub.com



j a p a

Journal of the American Psychoanalytic Association

APsAA Members receive preferred subscription rates that include online access. Subscribe today by calling (212) 752-0450, Ext 15.

EDITOR

Steven T. Levy, M.D.


The **Journal of the American Psychoanalytic Association (JAPA)** is the preeminent North American psychoanalytic scholarly journal. It is an invaluable, peer-reviewed resource for psychoanalysts, psychologists, psychiatrists, and other mental health professionals that publishes original articles, research, plenary presentations, panel reports, abstracts, commentaries, editorials and correspondence. In addition, the **JAPA Review of Books** provides in-depth reviews of recent literature.

JAPA is available online through the SAGE Journals Online platform. Your member subscription includes free online access with the following features:

- Full-text access back to Volume 1, Issue 1
- Free alerting services, including contents alerts, citation alerts, and RSS feeds
- Early online access to **JAPA** articles through Online First
- Monthly updates to the Most-Read and Most-Cited articles
- Free inter-journal reference linking
- JAPA Prize articles

Thomson Scientific (formerly ISI) Journal Citation Reports
2008 Ranking: 4/13 in Psychology/Psychoanalysis • 72/85 in Psychiatry
Impact Factor: 0.722


www.sagepub.com


A M E R I C A N
P S Y C H O A N A L Y T I C
A S S O C I A T I O N
www.apsa.org