



Dear Colleague:

We welcome you to APsaA's 97th Annual Meeting and to Atlanta, one of America's premiere cities of the 21st Century, and the home of an accredited APsaA institute, Emory University Psychoanalytic Institute; an affiliate APsaA society, the Atlanta Psychoanalytic Society; and the Atlanta Foundation for Psychoanalysis.

For value, there's nothing like a meeting rich with opportunities for networking with your colleagues and reinvigorating your education and training. And that's exactly what the Annual Meeting offers. Here are but a few highlights:

Gertrude & Ernst Ticho Memorial Lecture

APsaA's wide variety of scientific sessions offers vigorous learning opportunities for all who attend. *In particular, we invite you to attend the Gertrude and Ernst Ticho Memorial Lecture*, the only supported lectureship in the American Psychoanalytic Association. This lectureship has been created to recognize and honor promising early to mid-career analysts. This meeting's Ticho Memorial lecture will be presented by APsaA member Arnold Wilson, Ph.D. and will be followed by the Ticho reception, open to all Meeting registrants.

Presidential Symposium

This meeting's Presidential Symposium, a program of APsaA's Campaign 2008 which encourages members to become advocates for their profession, features honorary member Charles Strozier, Ph.D. who will discuss "The Forever War on Terror: Dilemmas and Choices." Dr. Strozier will present ways the apocalyptic mindset that underlies the current "war on terror" has changed the role of the United States in global politics, altering principles established by framers of the Constitution.

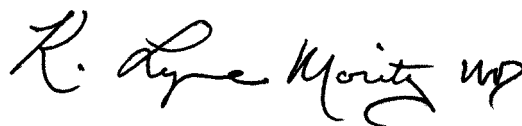
Plenary Address

The Plenary Address will be given by *JAPA* Editor and Emory University Psychoanalytic Institute director Steven Levy, M.D. on the subject of "Psychoanalytic Education Then and Now."

In addition, the Scientific Program offers a wealth of dynamic discussion groups, panels, and workshops at which you can earn continuing professional education.

So, with my best wishes, enjoy the Meeting and enjoy Atlanta!

Cordially,



K. Lynne Moritz, M.D.
President

TABLE OF CONTENTS

Exhibitors and Confidentiality	3
Continuing Professional Education Credit	4
Registration & Exhibit Hours	5
A Glossary to the Scientific Program	6-7
Daily Schedule	8-27
Tuesday	8
Wednesday	8
Thursday	12
Friday	21
Saturday	25
Sunday	27
Submission Guidelines	28-29
APsaA Officers, Program Committee and Staff	31
Program Participants	32-33
Calling All Educators, Psychotherapists, Researchers, Students and Residents	35
Winter 2009 Meeting Program Highlights	36

Hyatt Regency Atlanta
265 Peachtree Street, NE
Atlanta, Georgia 30303
404-577-1234

SOCIAL EVENTS

WEDNESDAY, JUNE 18, 2008

7:15 p.m.-8:30 p.m.

Reception to Welcome Gay and Lesbian Participants
(see page 12)

THURSDAY, JUNE 19, 2008

7:45 a.m.-8:15 a.m.

Breakfast Gathering for Affiliate Members and Candidates
(see page 12)

12:30 p.m.

Candidate Dutch Treat Lunch (see page 16)

7:15 p.m.-8:15 p.m.

**Reception for Psychiatric Residents, Psychology,
Social Work Students, and Student/Resident Associates**
(see page 20)

7:30 p.m.

Candidate Dinner Party (see page 21)

FRIDAY, JUNE 20, 2008

6:45 p.m.-8:30 p.m.

Gertrude and Ernst Ticho Memorial Lecture Reception
(see page 25)

SATURDAY, JUNE 21, 2008

7:45 a.m.-8:45 a.m.

**COCAA/COCAP Breakfast for All Interested in Work with
Children and Adolescents** (see page 25)

WELCOME NEWCOMERS!

We are glad you're here.

Feel free to stop an APsaA staff member during the conference if you have any questions. You can easily recognize us by the red ribbon we will be wearing on our name badge.

Are you wearing *your* badge?

Name badges are required to attend all sections of the Scientific Program.

Your badge is your passport to attend the Program sessions and the only way we can tell you have registered for the Meeting.

Badges must be worn in plain sight to gain access to APsaA's Meeting. Individuals who are not wearing their name badge or not wearing the correct name badge will be asked to properly register for the Meeting.

SAVE THE DATE!

Winter 2009 Meeting

January 14-18, 2009

Waldorf Astoria Hotel

New York City

46th Annual IPA Congress

July 28-August 1, 2009

Chicago



CITY OF ATLANTA

55 TRINITY AVE. S.W.
ATLANTA, GEORGIA 30335-0300

TEL (404) 330-6100

June 18, 2008



SHIRLEY FRANKLIN
MAYOR

Greetings:

As Mayor of Atlanta, it is my pleasure to welcome the American Psychoanalytic Association (APsaA) as we host your *97th Annual Meeting*.

Founded in 1911, the APsaA has demonstrated an exemplary commitment to creating opportunity and guidance for psychoanalysts. The *97th Annual Meeting* is an occasion to recognize and celebrate the accomplishments of individuals who convey excellence and passionately epitomize the essence of the APsaA. The City of Atlanta appreciates your invaluable contributions.

While in our city, we encourage you to explore the many attractions Atlanta has to offer including: the Martin L. King Jr. Center, the Apex Museum, Underground Atlanta, the Georgia Aquarium, the World of Coca-Cola, CNN Center, Centennial Olympic Park, Woodruff Arts Center, Atlanta Botanical Garden, Children's Museum of Atlanta and many more! We invite you to share in our southern hospitality, sample cuisine at our many fine restaurants and enjoy the rich and diverse heritage of our city.

On behalf of the people of Atlanta, I wish you a very informative event!

Sincerely

A handwritten signature in cursive script that reads "Shirley Franklin".

Shirley Franklin

CONFIDENTIALITY

Confidentiality is of the utmost importance to APsaA and we would like to remind you about a few key issues concerning confidentiality at the Meeting:

- Material presented in all sessions must not be written about or discussed outside the group itself in the service of protecting confidentiality of any patient discussion.
- Use appropriate disguise and/or informed consent when talking about a patient. Even when demographic variables have been changed, specific details included in clinical material can reveal a patient's identity to those who know him and should be avoided where possible.
- If a registrant attends a session in which clinical material is being presented and discussed and the registrant thinks that they recognize the identity of the patient, they should protect the patient's confidentiality by quietly excusing themselves from the remainder of that session.
- Special care must be taken to avoid conversations about clinical material in halls and elevators.
- Emails and internet postings about the clinical material should be absolutely avoided.

*Henry F. Smith, M.D.
Chair, Program Committee*

Attendance at APsaA's meetings are dependent upon the participant's agreement to maintain this confidentiality. We're sure you can appreciate the importance of this issue and we thank you for your cooperation.

97TH ANNUAL MEETING EXHIBITORS

Association Book Exhibits

9423 Old Mount Vernon Road
Alexandria, VA 22309
Phone: (703) 619-5030
www.bookexhibit.com

Mental Health Resources

44 West Bridge Street
Catskill, NY 12414
Toll Free: (877) 647-0202

Routledge Journals

325 Chestnut Street
Philadelphia, PA 19106
Phone: (215) 625-8900
www.taylorandfrancis.com

Frenkel and Company, Inc.

101 Hudson Street
Jersey City, NJ 07302
Toll Free: (800) 373-6535
www.frenkel.com

Routledge

270 Madison Avenue
New York, NY 10016
Toll Free: (800) 643-7064
www.routledge.com

SAGE Publications

2455 Teller Road
Thousand Oaks, CA 91320
Toll Free: (800) 818-7243
www.sagepub.com

ATLANTA LOCAL ARRANGEMENTS COMMITTEE

A very special thank you to the following members of the Atlanta Local Arrangements Committee who helped with promotion, outreach, social events and hospitality.

M. Jane Yates, Ph.D., *Chair*

Nora Dougherty, D.S.W.

Lucie Klein-Coulton, LMFT, LCSW, B.C.D.

Wendy Jacobson, M.D.

Beth J. Seelig, M.D.

Robert T. Elliott, M.D.

Judy B. Kisla, D.O.

Ms. Rose Jordan



The American Psychoanalytic Association (APsaA), the oldest national psychoanalytic organization in the nation, was founded in 1911. APsaA, as a professional organization for psychoanalysts, focuses on education, research and membership development.

CONTINUING PROFESSIONAL EDUCATION CREDIT

STATEMENT OF OBJECTIVES

The Scientific Meetings of the American Psychoanalytic Association are intended for the continuing education of the members and other registrants and include several individual teaching programs. A series of panels and special lectures presents new research in clinical and theoretical topics. Specific workshops ranging from single afternoons to 2-day workshops explore in detail the knowledge of a particular clinical or research area. Scientific papers are presented and discussed, each of which has been carefully reviewed by the Program Committee. A series of special seminars is presented to provide interdisciplinary education on topics of importance to psychoanalysis.

CONTINUING PROFESSIONAL EDUCATION CREDITS

Psychologists

The American Psychoanalytic Association is approved by the American Psychological Association to sponsor continuing education for psychologists. The American Psychoanalytic Association maintains responsibility for the program.

MCEP Credits for California Psychologists

The California Psychological Association Accrediting Agency accepts credits earned from American Psychological Association-approved sponsors (the American Psychoanalytic Association is an APA-approved sponsor). California-licensed psychologists are, however, required to directly report the courses they have taken with APA sponsors. For information about the MCEP Credit Reporting Form, go to the web site at www.calpsychlink.org then click on the Accrediting Agency button.

Social Workers

The National Association of Social Workers, Georgia Chapter, has approved this program for up to 40 core continuing education hours. Social workers from other states must check with their licensing boards.

Physicians

The American Psychoanalytic Association is accredited by the Accreditation Council for Continuing Medical Education to provide continuing medical education for physicians and takes full responsibility for the content, quality, and scientific integrity of this CME activity.

The American Psychoanalytic Association designates this educational activity for a maximum of 40 hours in category 1 credit toward the AMA Physician's Recognition Award. Each physician should claim only those credits that he/she actually spent in the activity.

Disclosure information is on record indicating that participating faculty members have no significant financial relationships to disclose.

REGISTRATION & EXHIBITS

Wednesday, June 18

Registration 8:30 a.m.-5:00 p.m.
Exhibits 1:00 p.m.-5:00 p.m.

Thursday, June 19

Registration & Exhibits 8:30 a.m.-5:00 p.m.

Friday, June 20

Registration & Exhibits 8:30 a.m.-5:15 p.m.

Saturday, June 21

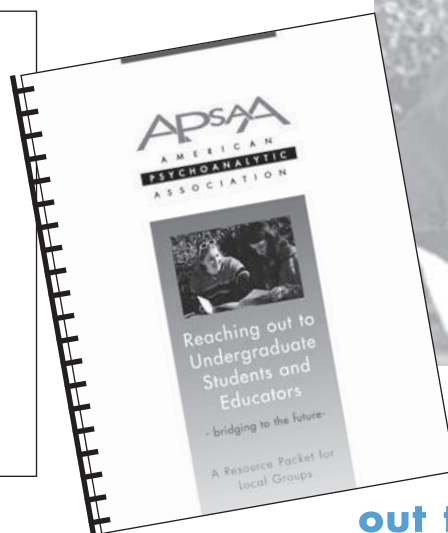
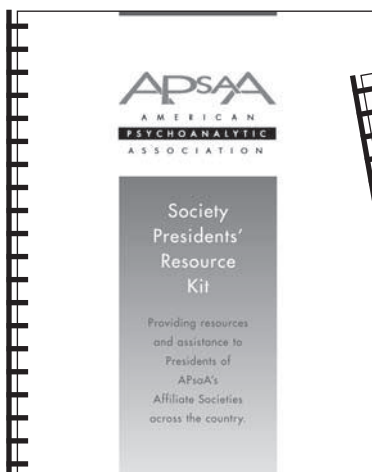
Registration & Exhibits 8:30 a.m.-5:00 p.m.

Sunday, June 22

Registration & Exhibits 8:30 a.m.-12:15 p.m.

Headquarters and Press Room: Lenox Room
(Conference Center Level)

Two new publications are available now!



Society Presidents' Resource Kit

Providing resources and assistance to Presidents of APsAA's Affiliate Societies across the country.

34 pages, 8.5" x 11" *The Society Presidents Resource Kit* may be downloaded at www.apsa.org/presidents_kit

Reaching out to Undergraduate Students and Educators

Providing societies and institutes with ideas about setting up outreach programs to local colleges and universities.

24 pages, 8.5" x 11" *The Local Packet* may be downloaded at www.apsa.org/local_packet

Comb bound hardcopies of both publications are available at \$8 each.

To order, visit www.apsa.org

In the left hand menu bar, click on the words "Online Store" or contact Dottie Jeffries, Director of Public Affairs info@apsa.org; 212-752-0450, x29.

A GLOSSARY TO THE ONLY THESE SESSIONS ARE ELIGIBLE FOR CON

Discussion Groups

Wednesday & Thursday 9:00 a.m.-11:30 a.m.
. 2:00 p.m.-4:30 p.m.
. 4:45 p.m.-7:15 p.m.
. 7:30 p.m.-10:00 p.m.

Permits a small number of participants to discuss a topic of mutual interest. Discussion groups meet regularly at bi-annual meetings. This continuity offers the opportunity to build collaborations with colleagues nationally and internationally. New participants are welcome to each group.

Senior Analyst Presentation Program

Wednesday 9:00 a.m.-12:00 noon
. 2:00 p.m.-4:30 p.m.

A senior analyst presents process material illustrating his/her own analytic work. Registration for the Senior Analyst Presentation is limited to candidates, affiliates and students. Please contact Ethan M. Grumbach, Ph.D. (948 South Citrus Ave., Los Angeles, CA 90036 or grumbach@pacbell.net) indicating your interest to participate and preregister for the presentation. If you are a candidate or student, please mention where your studies take place. Space is limited, so please preregister.

Two-Day Clinical Workshops

Wednesday & Thursday 4:45 p.m.-7:00 p.m.

Demonstrates and explores the specific manner in which a distinguished psychoanalyst listens to clinical material and conceptualizes process and technique.

Pre-Registration is required. Seats are limited.

Research Seminar

Wednesday 4:45 p.m.-7:15 p.m.

Fellows of the American Psychoanalytic Association briefly present their current research studies in psychoanalytic psychotherapy, psychoanalysis, and applied psychoanalysis.

Oral History Workshop

Thursday 9:00 a.m.-12:30 p.m.

Explores the history of psychoanalysis through presentations by analysts and related professionals.

Affiliates' Forum

Thursday 2:00 p.m.-4:30 p.m.

Devoted to the demonstration and exploration of innovative techniques in psychoanalytic education.

Special Programs for Psychiatric Residents, Psychology and Social Work Students

Thursday 4:45 p.m.-7:15 p.m.

Friday 2:00 p.m.-4:30 p.m.

Saturday & Sunday 9:00 a.m.-11:30 a.m.

Four sessions directed to Psychiatric Residents, Psychology and Social Work Students but open to all registrants. The format is a lecture on a particular topic by the designated faculty member, followed by a case presentation by a participant in the APsA Fellowship Program.

Two-Session Film Workshop

Thursday 7:30 p.m.-10:00 p.m.

Saturday 2:00 p.m.-5:00 p.m.

Films that are related thematically through their psychoanalytic relevance are shown and interpreted by formal discussants and the audience. Related discussion group takes place on Wednesday from 7:30 p.m.-10:00 p.m.



SCIENTIFIC PROGRAM

CONTINUING PROFESSIONAL EDUCATION CREDIT

Plenary Address

Friday 9:45 a.m.-11:15 a.m.
Major addresses by outstanding psychoanalysts or other professionals.

Symposia

Friday 12:00 noon-1:30 p.m.
This format explores the interface between psychoanalysis, society and related disciplines. Many attempt to demonstrate how psychoanalytic thinking can be applied to non-psychoanalytic settings.

Panels

Friday 2:00 p.m.-5:00 p.m.
Saturday 9:00 a.m.-12:00 noon
. 2:00 p.m.-5:00 p.m.
Sunday 9:00 a.m.-12:00 noon
Panels bring together nationally recognized psychoanalysts to present papers on clinical and theoretical topics. Active interchange with the panelists is encouraged in response to questions from the audience.

Scientific Papers

Friday 2:00 p.m.-5:00 p.m.
Saturday 2:00 p.m.-5:00 p.m.
Selected by a juried review process, papers are presented by the author and considered by a formal discussant. Ample time is allotted for the audience to respond.

University Forum

Friday 2:00 p.m.-5:00 p.m.
Two psychoanalysts will draw out two academic presenters whose work, not yet known to most psychoanalysts, offers exciting possibilities for dialogue across disciplines. Here is a chance for us to learn from distinguished academic colleagues and to influence them as well.

Spotlight on Capital Hill

Friday 2:00 p.m.-3:30 p.m.
Focuses on crucial health legislation currently being considered in Washington, and how it will directly affect your practice. **Note:** This program is intended to satisfy the requirements of those states that require CME credits in the area of risk management or medical ethics for medical license renewal, but the final judgment for such qualification is made by each state medical board.

Gertrude and Ernst Ticho Memorial Lecture

Friday 5:15 p.m.-6:45 p.m.
The Gertrude and Ernst Ticho Memorial Lecture is given by an early to mid-career analyst who is currently making contributions to psychoanalysis and shows promise of making significant future contributions to psychoanalytic science, practice, and thought. The lecture is supported by a generous grant from the Gertrude and Ernst Ticho Charitable Foundation.

Discussion with the Committee on Scientific Activities

Saturday 7:00 a.m.-9:00 a.m.
Interested participants discuss the use of personal computers for psychoanalytic studies.



DAILY SCHEDULE

TUESDAY, JUNE 17, 2008

9:00 a.m.-12:00 noon

**Committee Sponsored Workshop:
COCAA Workshop: Consideration of New Options
for COCAA Sponsored Child and Adolescent
Psychoanalytic Education**

*Chairs: Lee Ascherman, M.D. (Birmingham, AL)
Ruth Karush, M.D. (New York, N.Y.)
Presenters: Kerry Kelly Novick (Ann Arbor, MI)
Rex McGehee, M.D. (Denver, CO)*

This workshop is open to ALL interested attendees.

On June 20, 2007 the Board of Professional Standards approved the training of candidates in child and adolescent psychoanalysis without simultaneous or prior training in adult psychoanalysis. The decision to do so was based on five years of study of child and adolescent focused pilot training programs at four different Institutes of the American Psychoanalytic Association. Child and adolescent psychoanalytic training without simultaneous or prior adult psychoanalytic training may be offered by Institutes/Centers with APsA approved child and adolescent psychoanalytic training programs, sponsored by the Committee on Child and Adolescent Analysis (COCAA). This workshop will provide a forum for discussion of new options for COCAA sponsored child and adolescent psychoanalytic training under existing guidelines.

9:00 a.m.-1:00 p.m.

**Administrative Meeting:
Association of Administrators Meeting**

This meeting is open to Administrators of APsA's Accredited Training Institutes and Affiliated Societies.

2:00 p.m.-4:30 p.m.

**Committee Sponsored Workshop:
Workshop for Directors of Institutes
and Chairs of Educational Committees**

*Chairs: Elizabeth Brett, Ph.D. (Woodbridge, CT)
Daniel Jacobs, M.D. (Brookline, MA)*

Open to Directors of Institutes and Education Committee Chairs of APsA Accredited Institutes and New Training Facilities.

The primary topic for the meeting will be the work of the Task Force on Externalization. The Task Force is proposing an Externalized Body for Accreditation and Credentialing (EBAC) to accredit institutes and certify members. Institutes (not individuals) would form this

organization. You can read about the EBAC at: http://docs.google.com/View?docid=dcm5s7wr_40frjvfvqr and http://docs.google.com/View?docid=dcm5s7wr_43cd9zrcgw. We will also discuss the institute's reactions to the PIPE Report.

WEDNESDAY, JUNE 18, 2008

8:00 a.m.-5:00 p.m.

**Administrative Meeting:
Board on Professional Standards**

APsA's Board on Professional Standards (BOPS) is responsible for establishing and maintaining standards for psychoanalytic education and clinical training in APsA-approved psychoanalytic training institutes. BOPS consists of two representatives from each Approved or Provisionally Approved Training Institute and one representative from each Approved or Provisionally Approved New Training Facility for the teaching of psychoanalysis recognized by this Association.

The Board on Professional Standards meeting is open to any member of the Association except when there is a need for BOPS to be in executive session.

9:00 a.m.-11:30 a.m.

**Discussion Group 1: The Psychodynamics
of Spirituality: Terror in the Name of God:
A Psychoanalytic Perspective **CPE****

*Chair: Paula J. Hamm, M.A., L.P.C. (Centreville, VA)
Presenter: James Jones, Psy.D., Ph.D., Th.D.
(New Brunswick, NJ)*

The central question we will discuss is: What can clinical psychoanalysis contribute to the current discussion of religiously motivated terrorism? Dr. James Jones will present his latest book titled: *Blood That Cries From The Earth: The Psychological Roots of Religious Terrorism*. Attention will be paid to the dynamics of splitting as discussed by Fairbairn and Klein and idealization as theorized by Kohut. Dr. Jones is a Fellow of the American Psychological Association and has received an award for his contributions to the psychology of religion.

After attending this session, participants should be able to (1) understand some of the ways in which clinical psychoanalysis can contribute to our understanding of religiously motivated terrorism, (2) describe some of the ways in which individual psychodynamics become translated into social movements.

DAILY SCHEDULE

9:00 a.m.-11:30 a.m. (continued)

Discussion Group 2: Contemporary Models of Psychoanalytic Group Psychotherapy: Theory and Process **CPE**

*Co-chairs: Christine Kieffer, Ph.D. (Chicago, IL)
Irene N. Harwood, Psy.D., Ph.D., M.S.W. (Los Angeles, CA)*

Presenters: Philip J. Flores, Ph.D. (Atlanta, GA)
Jeffrey D. Roth, M.D. (Chicago, IL)*

Participants in this presentation will learn about two major features of psychoanalytic group psychotherapy that are also relevant to the psychoanalytic dyad: the function of attachment and the concept of the group-as-a-whole. Both of these features will be examined in relation to free association, resistance and transference in the group and individual analytic settings. The presenters Drs. Philip Flores and Jeffrey Roth will also integrate the study of attachment and group-as-a-whole to their particular area of interest in working with group members who are recovering from addictions and compulsive behaviors. Participants will identify how incorporating these features of group psychotherapy might enhance the effectiveness of their psychoanalytic work. Participants will be invited to join a role-play where these principles will be illustrated in the here-and-now of a demonstration group. Drs. Kieffer and Harwood will facilitate a group discussion with all participants.

After attending this session, participants will be able to 1) identify two aspects of disordered attachment that lead to addiction and compulsive behavior; 2) identify two ways in which addictions manifest themselves as transference resistances in group and dyadic settings.

Discussion Group 3: Psychoanalytic Treatment of Eating Disorders and Body Image Concerns Across the Life Cycle **CPE** **PSYT**

Chair & Coordinator: Kathryn J. Zerbe, M.D. (Portland, OR)

Presenter: Nancy C. Winters, M.D. (Portland, OR)

This discussion group will explore some of the most common transference and countertransference patterns that occur within the broad context of treating eating disorders and body image problems, reviewing the long history of psychoanalytic ideas in this area. The group will also feature a presentation by Dr. Nancy C. Winters and will compare within a pluralistic theoretical framework the risks and benefits of particular modes of therapeutic intervention.

After attending this session, participants should be able to: describe the typical dynamic issues encountered in this patient group; compare the

dynamic patterns that are unique to periods of the life cycle; generate interventions that incorporate a developmental perspective; demonstrate the rationale for applying psychoanalytic principles to this challenging group of patients.

9:00 a.m.-12:00 noon

Senior Analyst Presentation Program, Part 1 **CPE** **CND**

Please Note: This program is open to candidates, affiliates and students only. Please contact Ethan M. Grumbach, Ph.D. (948 South Citrus Ave., Los Angeles, CA 90036 or grumbach@pacbell.net) indicating your interest in participating and to pre-register for the presentation. If you are a candidate or student, please mention where your studies take place. Space is limited so please pre-register.

*Chair: Ethan M. Grumbach, Ph.D. (Los Angeles, CA)
Presenter: Fred L. Griffin, M.D. (Birmingham, AL)*

Participants in this program will be able to demonstrate an understanding of specific techniques utilized by a senior analyst during the presentation. The format of the program will provide a discussion of an analytic week of clinical case material presented with great detail.

After attending this session, participants will gain a greater perspective of various ways of listening to the material and how theoretical concepts may influence their capacity to understand the analytic process.

12:00 noon-1:30 p.m.

Committee Sponsored Workshop: The Business of Practice: Building and Maintaining a Psychoanalytic Psychotherapy Practice — A Roundtable Discussion **PSYT**

Chair: Carol Reichenenthal, Ph.D. (Brookline, MA)

Open to all interested attendees. This roundtable discussion will focus on how to build and maintain a psychoanalytic psychotherapy practice. It is a structured opportunity to pool experiences about managing the “business of practice.” Members of the Psychotherapist Associates Committee will facilitate discussion among attendees. We’ll share questions and solutions to common dilemmas. Topics include but are not limited to: office arrangements, referral networks, insurance, fees, office policies, billing, supervision, notes, consent, disclosure and privacy forms, peer and private supervision, and others. Please feel free to email the Chair (carolreichenenthal@verizon.net) before the roundtable with your topics of interest and/or questions.

DAILY SCHEDULE

12:00 noon-1:30 p.m. (continued)

**Committee Sponsored Workshop:
Roundtable on Working with the Media:
Building Relationships with the Press**

Co-chairs: Susan Jaffe, M.D., Chair, APsaA's
Committee on Public Information (New York, NY)
Dottie Jeffries, APsaA Director of Public Affairs
(New York, NY)

This Roundtable will focus on the value and importance of building relationships with the press for individual psychoanalysts as well as for local psychoanalytic groups. Ample time will be allowed for a general Q & A about the whys and hows of working with the media.

Participants are encouraged to BYO brown bag lunch to make the most of their time.

Pre-register by emailing Dottie Jeffries at
djeffries@apsa.org.

2:00 p.m.-4:30 p.m.

**Senior Analyst Presentation Program,
Part 2 CPE CND**

2:00 p.m.-4:30 p.m.

**Discussion Group 4: Clinical Applications
of the Ideas of Some Contemporary French
Psychoanalysts: Andre Green CPE**

Chair: Francis D. Baudry, M.D. (New York, NY)
Co-chair: Gail S. Reed, Ph.D. (New York, NY)
Presenter: Richard K. Hertel, Ph.D. (Ann Arbor, MI)

This ongoing discussion group focuses on how the theoretical ideas of the French analyst, Andre Green, might be applied to the clinical analytic situation. A summary of his main ideas as well as a bibliography of his most important papers available in English can be found in: Reed, G. and Baudry, F. (2005) "Conflict, Structure and Absence: Andre Green on Narcissistic and Borderline Pathology," *The Psychoanalytic Quarterly*, 74:121-155. Newcomers are encouraged to read this article as well as some of Green's work. This June's meeting will continue the exploration of Green's ideas about non-neurotic patients. The group will read and discuss carefully Green's paper "The Dead Mother" focusing on the issue of countertransference. Dr. Richard Hertel will then present a case in which Green's ideas helped him resolve a stalemate.

After attending this session, participants should be able to recognize countertransference feelings indicative of the presence of dynamic configurations in patients related to the "Dead Mother" and to generate interventions based on these ideas.

**Discussion Group 5: Unmotivated Malignancy:
Iago's Evil in Othello CPE**

Chair: Jerome M. Grunes, M.D. (Glencoe, IL)
Presenter: Dorothy T. Grunes, M.D. (Chicago, IL)

In this discussion of *Othello*, we will raise the question of evil, and following the text observe how Shakespeare suggests motivations for Iago, and then shifts to an almost medieval view of the nature of evil. We hope to show that Coleridge was correct in his view of Iago. We will also include previous psychoanalytic interpretations including those of Dr. Martin Wanhg. The participants will increase their evaluation of Shakespeare's genius and his ability to play with his audience.

After attending this session, participants should be comfortable using their psychoanalytic insights in enriching their reading of Shakespeare.

**Discussion Group 6: Writing and Interviewing
For Certification: Discussion with Members
of the Certification Examination Committee CPE**

Chair & Coordinator: Paul C. Holinger, M.D.
(Chicago, IL)

Co-chair: Karen M. Johnson, M.D. (Palo Alto, CA)

Members of the Certification Examination Committee (CEC) and participants will discuss a written case together. Participants will observe how the CEC functions and will also participate as committee members in discussing the case. Participants are encouraged to ask the CEC members whatever questions they might have about case write-ups, the interviews, and the workings of the Committee.

After attending this session, participants will have a better understanding of how to write-up their cases to submit to the Certification Examination Committee (CEC); they will also have a better understanding of the interview process and the functioning of the CEC.

4:45 p.m.-7:00 p.m.

**Two-Day Clinical Workshop #1, Part 1: Workshop
Series in Analytic Process and Technique CPE**

Chair: Irene Cairo, M.D. (New York, NY)
Featured Discussant: Dr. Ronald S. Britton*
(London, UK)
Presenter: Cordelia Schmidt-Hellerau, Ph.D.
(Chestnut Hill, MA)

In this two-day clinical workshop, a clinical presenter will present detailed case and process material to a featured discussant known especially for his or her contributions to and views on clinical process.

DAILY SCHEDULE

4:45 p.m.-7:00 p.m. (continued)

Participants along with the featured discussant will have the opportunity to discuss this material in two sessions over two consecutive days and to observe first-hand how the featured discussant thinks clinically.

After attending this session, participants should be able to: describe how the featured discussant thinks about a specific clinical case; apply some of the featured discussant's ideas to his or her own subsequent clinical work; compare approaches to the same clinical material by different colleagues.

Two-Day Clinical Workshop #2, Part 1: Psychotherapy Technique and Process **CPE** **PSYT**

Chair: Alan Pollack, M.D. (Newton, MA)

Featured Discussant: Phillip S. Freeman, M.D., D.M.H. (Newton Highlands, MA)

Presenter: Dr. Laura A. Westen (Atlanta, GA)*

The Two-Day Clinical Workshop on Psychoanalytic Psychotherapy offers participants an unusual opportunity to investigate the process of psychoanalytic psychotherapy in depth. At each meeting, a psychotherapist presents extended process material from an actual case over two days. Workshop participants, led by a senior clinician, join in examining the moment-by-moment process.

After attending these sessions, participants should be able more fully to comprehend the interplay of surface and unconscious determinants of psychotherapy process, and more ably to apply psychoanalytic understanding to their own clinical work.

Child and Adolescent Two-Day Clinical Workshop, Part 1

CANCELLED

4:45 p.m.-7:15 p.m.

Discussion Group 7: Are You My Mother? A Question of Maternal Representation **CPE**

Co-chairs: Roy N. Aruffo, M.D. (Houston, TX)

Samuel E. Rubin, M.D. (Birmingham, AL)

Coordinator: Lee I. Ascherman, M.D. (Birmingham, AL)

Presenter: Helene Keable, M.D. (New York, NY)

This discussion group will hear the early development of an analytic process in a 10 year old girl with unusual reality circumstances not ordinarily thought to be amenable to analysis. The handling of this and the analyst's work with this while maintaining an analytic position will be a central part of the material for discussion.

After attending the session, participants should be able to broaden their thinking about analyzability and the potential for developing child analytic cases.

Discussion Group 8: Candidate to Candidate: Mistake or Clinical Acuity: The Transitional Space Between Analytic Theory and Personal Intuition **CPE** **CND**

Please Note: This session will take place on Thursday, June 19, 4:45 p.m.-7:15 p.m., NOT on Wednesday, June 18. Please see listing on page 18.

Discussion Group 9: Emerging Perspectives on Lesbian/Gay/Bisexual/Trans Issues: Sexual Fantasies as a Defense Against Fusion and Loss **CPE** **PSYT**

Chair: Ethan Grumbach, Ph.D. (Los Angeles, CA)

Presenter: Daniel E. Fast, M.D. (Beverly Hills CA)

Discussant: Gary Grossman, Ph.D. (San Francisco, CA)

Coordinator: Patrick J. Haggard, M.D. (Atlanta, GA)

This discussion group will explore the struggle a gay analysand experiences in attempting to have intimate relationships. Through exploring the transference and countertransference of the gay analysand and analyst participants will be able to identify and trace themes that factor into the analysand's confusion and frustration over intimacy and developing long term relationships.

After attending this session, participants should be able to identify various ways to address these issues in treatment. The participant will utilize their own experiences to share how these issues have impacted their own work and discriminate between their own values and those of the analysand.

Discussion Group 10: Applications of Psychoanalysis to Sports: Sport and Gender CANCELLED

Discussion Group 11: Shame Dynamics **CPE** **PSYT**

Chair: Melvin R. Lansky, M.D. (Los Angeles, CA)

Presenter: Britt-Marie Schiller, Ph.D. (Saint Louis, MO)

The goal of this session is to discuss shame dynamics in complex clinical and theoretical fields in which those dynamics are often hidden.

After attending this session, participants should be able to appreciate shame, not simply as an affect, but as a complex and often hidden dynamic system often covered over by more visible parts of the clinical or theoretical picture.

DAILY SCHEDULE

4:45 p.m.-7:15 p.m.

Research Seminar: Using the Clinician's Subjective Experience of the Treatment as a Research Tool: Designing Valid Measures of Psychoanalytic Constructs. (Sponsored by the Fellowship Committee) [CPE] [PSYT]

Chair: Charles P. Fisher, M.D. (San Francisco, CA)
Presenters: Clifford P. Guarnaccia, Ph.D. (Atlanta, GA)
Kevin B. Meehan, Ph.D. (Brooklyn, NY)
Discussant: Lois W. Choi-Kain, M.D. (Belmont, MA)*

This seminar will present methods and findings from two different approaches to the use of clinicians' subjective experience of the work with patients as a research tool. Therapist responses to a sophisticated questionnaire asking them to rate dimensions such as transference, countertransference, affect, and attachment are compared to various "objective" outcome variables.

After attending this session, participants should be able to describe some research approaches which move in the direction of objectifying the therapist's subjective experience. Participants will experience an intimate introduction to both the process and product of two psychotherapy research projects.

7:15 p.m.-8:30 p.m.

Social Event: Reception to Welcome Gay and Lesbian Participants

Sponsored by the Joint Committee on Gay and Lesbian Issues, all meeting registrants are welcome to attend this reception which follows the Discussion Group 9 on Emerging Perspectives on Lesbian/Gay/Bisexual/Trans Issues.

7:30 p.m.-10:00 p.m.

Discussion Group 12: The Experiences of Psychoanalysts Living in the Age of Terror [CPE] [PSYT]

Chair: David S. Goldman, M.D. (New York, NY)
Presenters: John Chandler, J.D. (Atlanta, GA)*
Matthew J. Payne, Ph.D. (Atlanta, GA)*
Charles D. Swift, J.D., LL.M. (Atlanta, GA)*

This discussion group will explore the negative effects that American society has weathered since the terror attacks of 9/11. It will collect views from the participants on their personal reactions and those of their analysts. It will examine papers discussing the psychoanalytic community's role in understanding terrorism. The group will review the recommendations of John Alderdice, Vamik Volkan, and Stuart Twemlow. It will also assess the validity of elected politicians, mainstream media, and the terrorism-protection

industry in their psychological interpretation of terrorism. It will deal with the psychoanalytic consequences of a society under threat, which has created decreased psychoanalytic space, diminished personal privacy, potential seizure of confidential analytic records, and restrictions on dissent.

After attending this session, participants should be able to understand the nature of terrorism, society's rational and irrational responses, and the place for psychoanalytic intervention to help individual patients, affected communities, and government leaders.

Discussion Group 13: Supervising Psychoanalytic Psychotherapy: A Unique Experience, a Unique Skill [CPE] [PSYT]

Co-chairs: Fred L. Griffin, M.D. (Birmingham, AL)
Jane S. Hall, L.C.S.W., F.I.P.A. (New York, NY)
Presenters: Alicia Austin, M.D. (Birmingham, AL)
Emily Lazenby, M.D. (Birmingham, AL)*

Supervising psychoanalytic psychotherapy often requires different techniques and skills from the supervision of analyses — including, among other elements, a determination of the unique educational needs of the supervisee at his or her specific phase of development as a psychotherapist. In this discussion group, two third-year psychiatric residents and their supervisor will present material from actual supervisory experiences. Afterwards, the supervisees will be available to discuss approaches that are useful in the supervision and those that are not helpful or even damaging to the learning process.

After attending the session, participants should be able to: (1) create a "profile" that delineates the specific needs of each supervisee — based upon the level of knowledge of psychoanalytic concepts and technique, degree of clinical experience, capacity for self-awareness with which each supervisee enters supervision, and the culture of their training program; (2) formulate technical approaches to psychotherapy supervision based upon the unique requirements of the supervisee at his or her level of professional development as a psychotherapist.

THURSDAY, JUNE 19, 2008

7:45 a.m.-8:15 a.m.

Social Event: Breakfast Gathering for Affiliate Members and Candidates [CND]

Join colleagues from around the country for breakfast. All are welcome to stay for the Affiliate Council meeting immediately following the breakfast.

DAILY SCHEDULE

8:00 a.m.-4:30 p.m.

Administrative Meeting: Executive Council

APsaA's Board of Directors, known as the Executive Council, is responsible for the management of the affairs and business of the Association. The Executive Council is comprised of the Association's officers, eight nationally elected Councilors-at-Large, and councilors representing each Affiliate Society of the Association as well as each Affiliate and Affiliated Study Group.

The Executive Council meeting is open to any member of the Association except when there is a need for the Council to be in executive session.

8:15 a.m.-12:30 p.m.

Administrative Meeting: Affiliate Council **CND**

The Affiliate Council meeting this June will include a member-connect roundtable discussion of training issues and a talk by one of the co-chairs of the Board on Professional Standards. All candidates and those visitors thinking of becoming candidates are welcome.

9:00 a.m.-11:30 a.m.

Discussion Group 14: The Influence of the Contemporary British Kleinians on Clinical Psychoanalysis: A Case in Process **CPE**

Co-chairs: Abbot A. Bronstein, Ph.D. (San Francisco, CA)

Katherine MacVicar, M.D. (Berkeley, CA)

Presenter: Nilufer E. Yalman-Chanin, Ph.D. (Nashville, TN)

Using material from an ongoing analysis conducted by a senior candidate or graduate analyst, this discussion group will explore material from successive hours and attempt to understand the unconscious phantasies and processes that underlie it. We will use established Kleinian concepts such as the total transference situation, the two basic positions, paranoid-schizoid and depressive, and defenses including splitting and projective identification. We hope to demonstrate the inevitability of the analyst being pulled or nudged toward enactments supporting the patient's defenses. We will discuss interventions and interpretations that we feel will promote psychic change and try to elucidate in the material the various forces opposing change.

After attending this session, participants should have a greater understanding of the therapeutic process from the Kleinian point of view. They should recognize how the analyst works in the here-and-now, how he attempts to elucidate the leading edge of

anxiety in the transference, and how he uses his countertransference to identify how he is being used either for or against understanding.

Discussion Group 15: Opera and Psychoanalysis: Conflict and Collaboration in the Mozart-Da Ponte Opera *The Marriage of Figaro* **CPE**

Co-chair: Lynn Buell, M.S.S.W. (Seattle, WA)

Co-chair & Presenter: Ralph Beaumont, M.D. (Portland, OR)

Presenters: Elecia V.O. Crowley, M.S. (Atlanta, GA) Kenneth Meltzer* (Atlanta, GA)*

This discussion group will explore the ways in which opera, as other forms of art, offers emotional, intellectual and aesthetic food for thought which can deepen our experience and understanding of humanity. Mozart's *The Marriage of Figaro* certainly meets the criteria of many levels of meaning, and modes of emotional and artistic expression.

After attending this session, participants should be able to use psychoanalytic ideas to comprehend more deeply unconscious dynamics related to the meanings of operatic libretti and scores, and the motives of librettists, composers, and characters portrayed in operas; to articulate the relevance of this comprehension to common clinical phenomena; and to appreciate and describe the relation of unconscious dynamics to aspects of the creative process.

Discussion Group 16: Therapeutic Action of Psychoanalytically Informed Work with Children in a School Setting **CPE PSYT**

Co-chairs: Roy N. Aruffo, M.D. (Houston, TX)

Phyllis J. Cath, M.D. (San Francisco, CA)

Aimee Nover, Ph.D. (Bethesda, MD)

Presenter: Kathleen Miller, Ph.D. (Washington, DC)

Psychoanalysts have worked in school settings for decades. Each analyst creates his or her own creative approach to consultation and collaboration with educators and systems of education. This group is aimed at giving those who do this work an opportunity to present their approaches and their clinical material — with the goals of creating a forum for discussing clinical material on a national level, to articulate guidelines and evaluate the effectiveness and theoretical understanding of these interventions and relationships, to inspire analysts and educators to form active relationships of mutual learning. Dr. Kathleen Miller, Director of the Jenny Waelder Hall Nursery, and a practicing psychoanalyst, will discuss her consultation to teachers in a therapeutic preschool.

DAILY SCHEDULE

9:00 a.m.-11:30 a.m. (continued)

Her presentation will give us the opportunity to discuss specific examples and to expand into a discussion of the therapeutic action of such interventions in an educational setting.

After participating in this discussion group, participants should be able to: (1) understand and evaluate the nature of psychoanalytic-educator collaboration, (2) recognize the challenges and complexity of the work, (3) clarify the difference between the role of teacher, consultant and therapist, (4) be capable of an accurate appraisal of their interest in doing this kind of work, (5) be inspired — whether educator or clinician — to do this kind of work because of the evident effectiveness, power and utility of it.

Discussion Group 17: Psychotherapist Associates Present: What Makes Psychotherapy Psychoanalytic?: Looking Closely at a Case with Focus on Transference, Process, and Progress **CPE** **PSYT**

Chair: Mae Kastor, M.S.W. (Baltimore, MD)

Co-chair: Jane Warren, Ph.D. (Ann Arbor, MI)

Coordinator: Marcia Polansky, M.S.W., Sc.D. (Philadelphia, PA)

Presenters: Ann H. Dart, LCSW (Portland, OR)

Discussant: Steven T. Levy, M.D. (Atlanta, GA)

Although presented especially for psychotherapists, this discussion group will explore ideas that are important to analysts as well. Looking closely at the process material presented, we will focus on details of data gathering and on how we conceptualize the way we work. We will consider the distinctions between the hypotheses we generate and the evidence we have for them. In an effort to sharpen our view on nuances of communications, both verbal and nonverbal, we will highlight attendance to cues we might otherwise overlook and consider the implications of some of our assumptions and inferences — whatever our theoretical model.

After participating in this session, the participant should have gained a broader understanding of the techniques and theory of psychoanalytic psychotherapy and be better able to evaluate what contributes to a patient's progress. Attendees will specifically have the opportunity to consider the use of transference interpretations in a twice weekly psychotherapy.

Discussion Group 18: On Settling the Score: Crime, Punishment, and the Death Penalty **CPE** **PSYT**

Chair: Donald B. Moss, M.D. (New York, NY)

Co-chair: Rogelio Sosnik, M.D. (New York, NY)

This discussion group is designed for analysts and analytically inclined people. The group focuses on issues of punishment with a focus on the death penalty.

After attending this session, participants should be able to think creatively about the fantasies that underlie the urge to punish, and particularly the urge to punish with death. Participants will have the chance to consider the kinds of satisfactions promised by punishment in general and by the death penalty in particular.

Discussion Group 19: Interpretation, Process and Technique in the Use of Play in the Analysis of Pre-Oedipal Children **CPE**

Chair: Susan P. Sherkow, M.D. (New York, NY)

Co-chair: Alexandra Harrison M.D. (Cambridge, MA)

After attending this session, participants should be able to have a greater understanding of the use and meaning of play in the course of treatment of children who are in the pre-oedipal phase when they begin analysis. Process is examined for insight into technical and structural understanding of work with this age group.

Discussion Group 20: The Termination Phase of Analysis **CPE**

Chair: Mayer Subrin, M.D. (Bloomfield Hills, MI)

Co-chair: David R. Dietrich, Ph.D. (Birmingham, MI)

Presenter: James W. Kern, M.D. (Ann Arbor, MI)

Questions this discussion group will consider include: What qualities distinguish termination phase from preceding stages? What developmental tasks need to be accomplished during this period? Are there typical termination fantasies? Resistance to and within termination as a process and phase will be considered for redefinition. Detailed clinical material will be the basis for the discussion of these and other questions.

After attending this session, participants should be able to understand the termination as phase and process.

9:00 a.m.-12:30 p.m.

Oral History Workshop #67: Recent Developments in Atlanta, New Orleans & Birmingham **CPE** **PSYT**

Chair: Ralph E. Roughton, M.D. (Atlanta, GA)

Presenters: Lee Ascherman, M.D. (Birmingham, AL)

Denise L. Dorsey, M.D. (New Orleans, LA)

Robert A. Paul, Ph.D. (Atlanta, GA)

Beth J. Seelig, M.D. (Atlanta, GA)

Marilyn Skinner, M.D. (New Orleans, LA)

DAILY SCHEDULE

9:00 a.m.-12:30 p.m. (continued)

This workshop will provide a regional history of Atlanta, Birmingham and New Orleans, covering the important new developments since the workshop's meeting in 1991 in New Orleans and the effects of Hurricane Katrina on local analysts. The aim of all APsaA's oral history workshops is to preserve the past history of psychoanalysis, whenever possible, by recording the recollections of our colleagues who took part in these events. When this is no longer possible, we draw on the observations of other witnesses and the results of primary research. Our objectives are threefold: to preserve a record of the past for the archives of APsaA, to make transcripts of our proceedings for the use of future researchers, and to awaken the interest of our younger members and candidates in our past.

After attending this session, participants should be able to describe the trends in this period in the history of psychoanalysis and emerge with a clearer picture of recent events, with any opportunity to discuss them with the panelists.

10:00 a.m.-12:00 noon

**Committee Sponsored Workshop:
COPE: Workshop on Supervision**

Chair: Rosemary Balsam, M.D. (New Haven, CT)

Rosemary Balsam will stand in for Barbara Stimmel this time. The topic will be "Life after Graduation: Supervision Peer Groups and Their Function."

Dr. Balsam will use a chapter she wrote in her 2001 book on supervision to start off the discussion. She will be joined by Dan Jacobs and other colleagues who have participated in long term peer groups in their communities to discuss such groups' role in extra-Institute analytic life, peer help and the nurture of our professional identities. Everyone is welcome to attend and we hope that people will contribute their own experiences concerning the values and/or vicissitudes of such groups.

12:00 noon-1:30 p.m.

Committee Sponsored Workshop: Local Outreach
Chair: Dottie Jeffries, APsaA Director of Public Affairs (New York, NY)

This workshop provides an opportunity for you to network with your colleagues across the country on effective outreach (film series, lectures, etc.), marketing, and public relations. Share the activities of your institute, society, center, and/or foundation and brainstorm with others. Please bring copies of brochures and other materials for sharing that have been effective in promoting your outreach. You are encouraged to bring your lunch and a beverage.

As workshop attendee and APsaA member Sid Phillips says:

"The Workshop on Local Outreach is a forum to learn about ingenious ideas about psychoanalytic outreach in the local community. If your institute or society has all the candidates and analysts it needs, don't attend. Otherwise, analysts should be forming double lines to get in. Learn how to enhance analytic practice by raising your community's awareness about psychoanalysis. Find out how to connect to local universities to co-sponsor programs. Discover ways to get involved with local psychiatry residencies or psychology postdoc program that will attract candidates to your institute. If psychoanalysis is to remain viable, intelligently and sensibly designed outreach in our local communities is essential. Here's the place to learn how to do it from the best such efforts in the country. I attend this workshop at every meeting and learn some new approach to problems my home institute is struggling with."

12:00 noon-2:00 p.m.

**Committee Sponsored Workshop:
For Candidates and Faculty of New Training
Facilities and Provisional Institutes**

Chair: William Bernstein, M.D. (Denver, CO)

This is an opportunity to share experiences, problems and issues related to new institute development and to learn from each other.

**Committee Sponsored Workshop:
On Teaching About Analytic Case Writing**

Chair: Stephen B. Bernstein, M.D. (Chestnut Hill, MA)

Co-Chairs: Melvin Bornstein, M.D. (Birmingham, MI)

Jonathan Palmer, M.D. (Newton, MA)

Arthur Rosenbaum, M.D. (Cleveland Heights, OH)

Peggy Warren, M.D. (Waban, MA)

Presenter: Peter L. Rudnytsky, Ph.D. (Gainesville, FL)

The Workshop will discuss seminar and faculty development relating to the teaching of analytic case writing and the usefulness of clinical writing in conceptualizing psychoanalytic process. (The Workshop is held in conjunction with a separate Discussion Group "Writing About Your Analytic Work In A Case Report", Thursday, from 4:45 p.m. to 7:15 p.m.)

At this meeting, Prof. Peter L. Rudnytsky, Editor of *American Imago* and Professor of English at the University of Florida, will offer editorial comments and lead a discussion about an original and

DAILY SCHEDULE

12:00 noon-2:00 p.m. (continued)

unpublished paper by Dr. Melvin Bornstein, an Editor of *Psychoanalytic Inquiry* and a Training and Supervising Analyst at the Michigan Psychoanalytic Institute. The meeting will focus on how clinical writers can communicate their ideas and their work more clearly to peers and to a wider analytic audience. We will see how such examination of a text is related to our group's ongoing interest in teaching about the communication of one's analytic work in clinical case reports.

Attendees are often faculty, graduates, and candidates from the growing number of institutes that are teaching or developing seminars dealing with clinical writing.

12:30 p.m.

Social Event: Candidate Dutch Treat Lunch **CND**

Immediately following the Affiliate Council meeting, please join other candidates at a Dutch Treat Lunch. Please sign up on the bulletin board near the Registration Desk.

2:00 p.m.-4:30 p.m.

Affiliates' Forum: Misdemeanors and Transgressions Within the Analytic Hour: Guilty Pleasures, Countertransference Responses and/or Technical Errors? **CPE** **CND** **PSYT**

Chair: Hilli Dagony-Clark, Psy.D. (New York, NY)
Presenter: William Braun, Psy.D. (New York, NY)
Discussant: Stanley J. Coen., M.D. (New York, NY)

This presentation will focus on the minor lapses inevitably committed by analysts in all levels of training. While the illusion of the "blank screen" analyst able to maintain complete composure throughout all analytic hours is now considered unrealistic, little attention is devoted to the subtle, everyday expression of analysts' needs within the analytic setting. The reasons for these transgressions, as well as the forms they take — whether a wandering mind, changing of the frame, or a quiet snack behind the couch — will be non-judgmentally examined. Dr. Braun will present clinical material highlighting his own transgressions, while Dr. Coen will comment on and discuss his work. Audience participation is strongly encouraged.

After participating in this session, participants should be able to describe what is considered an analytic "misdemeanor"; assess whether particular "misdemeanors" might advance or hinder analytic work; and evaluate the applicability of this knowledge in their practices.

2:00 p.m.-4:30 p.m.

Discussion Group 21: Infant Mental Life and the Dream in Psychoanalysis: Drugs, Sex, and Pain: Sadomasochism as Illuminated through the Dreams of a Young Man **CPE**

Chair: Bernard W. Bail, M.D. (Beverly Hills, CA)
Co-chair: Judith V. Parker, Ph.D. (Beverly Hills, CA)
*Presenter: Trevor Small, Psy.D. * (Beverly Hills, CA)*

The case presentation features a young man who struggles with self-destructive and sadomasochistic behavior. Process material including dreams and associations will illuminate the infantile unconscious components of sadomasochism and the internal battle between change and homeostasis. The material will also illustrate how the dream communicates the essential unconscious situation to be addressed in any given analytic hour and how the dream helps the analyst to "find the patient," locating where in unconscious time and space the patient is mentally living and unconsciously who he is being. If time permits, Dr. Bail will discuss his new paradigm for psychoanalysis — an outgrowth of his extensive work in the dream. Questions, comments, and discussion will be encouraged.

After participating in this session, participants should be able to: (1) increase understanding of infantile mental life and its contribution to sadomasochism, (2) increase understanding of how dream analysis deepens the analytic process, (3) encourage greater ease/further skill in working with dream material.

Discussion Group 22: A Classic Unvisited: The Clinical Value of the Ideas of Wilfred Bion **CPE**

Chair: Irene Cairo, M.D. (New York, NY)
Co-chair: Rogelio A. Sosnik, M.D. (New York, NY)
Presenter: Beverly H. Betz, MSW, M.Ed. (Baltimore, MD)
Coordinator: Ronnie M. Shaw, MS, RN, CS (Denver, CO)

Wilfred Bion's model of mental functioning is anchored strongly on Freud's and Klein's theories: yet it provides a new and different tool for approaching the process. For Bion, the encounter of two minds produces an emotional storm where both participants approach the meeting with specific expectations. Session material will be presented to show how Bion's model can affect the apprehension of clinical material, with a particular emphasis on expanding the analyst's capacity for interpretation.

After attending this session, participants should be able to identify Bion's basic ideas in the way they are applied to different clinical situations.

DAILY SCHEDULE

2:00 p.m.-4:30 p.m. (continued)

Discussion Group 23: Impasses and “Failed” Analysis **CPE**

*Co-chairs: Steven H. Goldberg, M.D.
(San Francisco, CA)*

Judy L. Kantrowitz, Ph.D. (Brookline, MA)

In this discussion group, we study the factors in both patient and analyst that contribute to the development of impasses and analytic “failures.” In particular, using detailed case presentations, we examine the subtle ways in which patient and analyst elicit in each other emotional experiences that cannot be adequately processed and understood. We attempt to normalize the experience of struggling with such cases- though all analysts find themselves dealing with impasses and analytic failures, such experiences often become sources of shame rather than opportunities for learning and personal/professional growth.

After attending this session, participants should be better able to differentiate impasses and analytic “failure” from more expectable processes of resistance and working through. Participants should gain greater understanding of the difficulty to recognize contributions of both patient and analyst to the impasse, as well as greater appreciation for the necessity of self-analytic work and/or consultation in the resolution of the impasse.

Discussion Group 24: Tools from Infant Research for Practicing Psychoanalysts **CPE**

Chair: Alexandra Harrison, M.D. (Cambridge, MA)

Drawing on theoretical and technical tools from infant research — developmental models consistent with open systems theory and videotape — Dr. Harrison complements her psychoanalytic theory with alternative perspectives and offers a new way of understanding therapeutic change in psychotherapy with children, adolescents, and adults. Dr. Harrison presents material from the analytic case of a 3-4 year old girl. Using videotape to illustrate her theoretical points, Dr. Harrison shows how the larger patterns in the clinical process emerge from the second to second interactive process. Turn taking patterns in vocal and action turns between analytic partners are examined together with the narrative of the sequences of videotape, demonstrating the importance of nonverbal communication in our understanding of change in therapy and also showing how the symbolic content of the session is inseparable from the communication of meaning by the body. By applying theories of development and growth to the analysis of videotape interactions, Dr. Harrison makes connections that promote the understanding of therapeutic change.

After attending this session, participants should be able to: (1) describe a developmental theory that is useful to the practicing clinician, (2) learn the value of videotape analysis to understanding clinical process, (3) understand the usefulness of turn taking patterns in studying therapeutic change, (4) understand general principles of open systems theory that underscore the process of growth and change in healthy development and psychotherapy.

Discussion Group 25: A Conversation with Dr. Leo Rangell: His Life and Work **CPE**

*Chair & Coordinator: Theodore J. Jacobs, M.D.
(New York, NY)*

Co-chair: Daniel H. Jacobs, M.D. (Brookline, MA)

Presenter: Leo Rangell, M.D. (Los Angeles, CA)

In this group, Dr. Leo Rangell will discuss his past and current work, his role as a leader of the American and International Psychoanalytic Associations and his views of the analytic process and the current state of psychoanalysis.

After attending this session, participants should have a broad understanding of Dr. Rangell’s enormous contributions to the field of psychoanalysis.

Discussion Group 26: Psychoanalysis and the Humanities and Social Sciences: The CORST Contribution **CPE PSYT**

Chair: Melvin R. Lansky, M.D. (Los Angeles, CA)

Presenter: Britt-Marie Schiller, Ph.D. (Saint Louis, MO)

The discussion group will feature a distinguished CORST graduate who will discuss his or her personal synthesis between the original discipline and clinical and theoretical psychoanalysis. Discussion from the audience will follow. The honoree for this meeting will be Dr. Britt-Marie Schiller.

After attending this session, participants will be able to have an appreciation, through the work of the academic being honored, the synthesis within that person’s academic discipline and psychoanalysis both clinical and theoretical.

Discussion Group 27: Analytic Listening: Reflections on Hypothesis and Evidence **CPE PSYT**

Chair: Ralph Beaumont, M.D. (Portland, OR)

The focus will be on details of the data-gathering process, and on how we conceptualize our clinical methodology, to consider the distinctions between the hypotheses we generate and the evidence we have for them. Looking at process notes of single session(s),

DAILY SCHEDULE

2:00 p.m.-4:30 p.m. (continued)

we will try to sharpen our view on nuances of communications, both verbal and nonverbal (pauses, shifts in affect, posture, appearance, etc). Effort will be made to highlight attendance to cues we might otherwise overlook, and to reflect on some of our assumptions and inferences — *whatever our espoused theoretical model* — to see how these may or may not hold up or stand in the way of opening yet untried paths. Presenter(s) will be located from among people planning to attend, and suggested reading lists will be sent.

After attending this session, participants should be able to gain deepened awareness of how one listens to and gathers the clinical data, and of the distinctions between hypotheses generated and the evidence for them; to locate verbal and nonverbal cues that may be otherwise overlooked; and to consider further implications in the nature of therapeutic action.

Discussion Group 28: Psychological Aspects of Assisted Reproductive Technology **CPE** **PSYT**

Chair: Miriam Tasini, M.D. (Los Angeles, CA)
Presenter: Alana Spiwak, M.D. (Houston, TX)

This discussion group will help participants recognize the psychological effects of assisted reproductive technology that has, in the past twenty years, affected the lives of thousands of men, women and children. The group will attempt to explore the unconscious repercussions on adults undergoing these procedures and the developmental effects that have been identified in the children. Clinical presentations of analytic material will help the participants to incorporate this knowledge into their work with patients.

After attending this session, participants should be able to acquire the ability to identify and address the emotional difficulties in their patients associated with their reproductive experiences.

4:45 p.m.-7:00 p.m.

Two-Day Clinical Workshop #1, Part 2: Workshop Series in Analytic Process and Technique **CPE**

Two-Day Clinical Workshop #2, Part 2: Psychotherapy Technique and Process **CPE**

Child and Adolescent Two-Day Clinical Workshop, Part 2
CANCELLED

4:45 p.m.-7:15 p.m.

Discussion Group 8: Candidate to Candidate: Mistake or Clinical Acuity: The Transitional Space Between Analytic Theory and Personal Intuition **CPE** **CND**

Chair: Hilli Dagony-Clark, Psy.D. (New York, NY)
Presenter: Fern Cohen, Ph.D. (New York, NY)

The discussion group will examine the clinical decisions candidates make in their roles as absorbers of formal knowledge and burgeoning analysts immersed in personal journeys. Dr. Cohen will present her paper, "A Candidate's Dilemma: To Say or Not to Say, To Do or Not to Do," published in *The Candidate Journal* (the candidatejournal.org), to illuminate the kinds of struggles candidates experience when finding their voices amidst a chorus of supervisors, instructors, and their own analysts. The powerful roles of countertransference and projective identification will be addressed in the context of a clinical case. Following the presentation of Dr. Cohen's paper, audience members will be encouraged to discuss how they grapple with their growing analytic identity and its impact on their clinical work.

After attending the session, participants should be able to identify the influence that countertransference and projective identification have on analytic cases and locate the impact of their personal dynamics in their clinical experiences.

Discussion Group 29: Writing About Your Analytic Work in a Case Report **CPE**

Chair: Stephen B. Bernstein, M.D. (Chestnut Hill, MA)
Co-chairs: Melvin Bornstein, M.D. (Birmingham, MI)
Arthur Rosenbaum, M.D. (Cleveland Heights, OH)
Peggy Warren, M.D. (Waban, MA)
Presenter: Mary L. Adams, M.S.W., ACSW (Farmington Hills, MI)

After attending this session, the participant should be able to organize and write about the analyst's work more easily, either in a brief clinical vignette or in an extended case report. Methods will be demonstrated to help the beginning clinical writer make the analytic experience more accessible and clear so that the level of reader inference is decreased. The participant will learn ways to begin to write about analytic process; to reveal and bring alive the experience of both the patient and the analyst; and to deepen the reader's understanding of the clinical account.

DAILY SCHEDULE

4:45 p.m.-7:15 p.m. (continued)

Discussion Group 30: Advocacy for Psychoanalysis: Implications of Jaffe v. Redmond: Federal Psychotherapist Patient Privilege (Sponsored by the Joint Committee on Confidentiality) CPE PSYT

Co-chair & Coordinator: Norman A. Clemens, M.D. (Cleveland, OH)

Co-chair & Presenter: Paul W. Mosher, M.D. (Albany, NY)

Presenter: Deborah C. Peel, M.D. (Austin, TX)

Since 1996, this discussion group has studied the Supreme Court decision in Jaffe v. Redmond and followed its many consequences with implications for clinical practice. These include effects on Federal and state court proceedings as well as the HIPAA Privacy Rule. With the push towards widespread use and transmission of electronic medical records, new challenges to privacy and confidentiality have arisen. Sponsored by the Joint Committee on Confidentiality, this discussion group engages practicing psychoanalysts in learning about these important issues and how to deal with them.

After attending this session, participants should be able to describe recent developments in the legal consequences of the 1996 Jaffee-Redmond decision, with particular attention to the dimensions of privacy, confidentiality, and privilege as they apply to the personal information disclosed in psychotherapy and psychoanalysis; and apply this knowledge to protect their patients and their therapy

Discussion Group 31: PTSD Guidelines, Current and Future CPE PSYT

Chair: Sheila Hafter Gray, M.D. (Washington, DC)

The American Psychiatric Association Practice Guidelines are authoritative resources for therapeutic approaches to mental disorders. They tend to reflect strongly the influence of the evidence-based health care movement; but they are not limited to this approach. Members of this group will review the current APA Guideline for the Treatment of Patients with Acute Stress Disorder and Post Traumatic Stress Disorder with the aim of developing strategies to make a revised Guideline consonant with psychoanalytic clinical and research findings.

After attending this session, participants should be able to: (1) integrate concepts of Evidence-Based and Narrative Based Health Care to develop clinical practice guidelines appropriate for psychoanalysis, (2) identify evidence that will be required to enhance the impact of psychoanalysis on a revised ASD/PTSD Guideline, (3) formulate strategies to integrate psychoanalytic findings into the next ASD/PTSD Guideline.

Discussion Group 32: Deepening the Treatment: From Psychotherapy to Psychoanalysis CPE PSYT

Chair: Jane S. Hall, L.C.S.W., F.I.P.A. (New York, NY)

Presenters: Sharon L. Berger, LCSW (Houston, TX)

Cheryl L. Eschbach, M.D. (Atlanta, GA)

Ingrid M. Geerken, Ph.D. (Oberlin, OH)

Wolfgang Rosenfeldt, M.D. (Dallas, TX)

Diane M. Wolman, MSW (Seattle, WA)

Many, if not most of our patients can benefit from intensive psychotherapy. How to engage these patients in deepening the treatment as opposed to the once-a-week counseling they frequently ask for is the topic of this seminar. One focus will be strengthening the therapist's conviction and fostering his/her skill in allowing the patient to consider the commitment involved in intensive treatment. Another focus will include listening for transference/countertransference manifestations from the first telephone contact. The roadblocks on the journey of psychotherapy, including the concept of the "frame" will be discussed. Shifting the treatment to psychoanalysis is discussed by one of the presenters.

After attending this session, participants should be able to: (1) recognize whether the patient can benefit from intensive psychoanalytic work, (2) assist the patient in understanding why more intensive work would be beneficial, (3) listen for resistances to going deeper and address those resistances, (4) provide an atmosphere where the necessary trust in the analyst and the process can develop. This includes boundary setting.

Discussion Group 33: Trauma in the Transference: Psychotic Symptoms as Reactions to Psychological Trauma vs. Indicators of Frank Psychosis: Treatment Implications CPE PSYT

Chair: Richard K. Hertel, Ph.D. (Ann Arbor, MI)

Presenter: Richard Waugaman, M.D.

(Chevy Chase, MD)

Clinical material will be presented in which, as the analytic psychotherapy deepened, a patient initially diagnosed as psychotic appeared less psychotic and more a person using psychotic behaviors in her struggle with PTSD. A change in therapeutic technique was implemented. Formal and informal discussion of the clinical presentation will follow.

After attending this session, participants should be able to improve their ability to: (1) identify indications of trauma in clinical material, (2) diagnose trauma and its impact upon the patient's ego functioning, (3) identify the impact of trauma upon the transference-countertransference, (4) consider the efficacy of new

DAILY SCHEDULE

4:45 p.m.-7:15 p.m. (continued)

trauma related interventions, (5) consider the degree to which the “new trauma related interventions” are compatible with the analytic frame used in treating pathology not affected by trauma.

Discussion Group 34: Trauma and Mastery Through Art: François Truffaut: Filmmaking and the Vicissitudes of Love **CPE**

Chair: Theodore J. Jacobs, M.D. (New York, NY)
Presenter: James Hamilton, M.D. (Santa Fe, NM)*

This group will focus on the cinematic art of the great film director, François Truffaut and its relation to his personal history.

After attending this session, participants should have an in-depth understanding of the relationship between Truffaut’s art and his psychological experiences.

Discussion Group 35: Research on the Relation of Psychoanalysis and Neuroscience: The Neural Underpinnings of Fear from Mice to Men **CPE**

Chair: Elise W. Snyder, M.D. (New York, NY)
Co Chair: Charles P. Fisher, M.D. (San Francisco, CA)
Presenter: Kerry J. Ressler, M.D., Ph.D. (Atlanta, GA)*

After attending this session, participants should be able to: (1) acquire new concepts for understanding the relations between biology and subjective experience in fear and depression, (2) gain a novel view of some of the complex systems relating events at molecular, anatomical, and experiential levels.

Discussion Group 38: Intersubjectivity and Transformative Moments in Psychoanalysis and Creative Works: “Tell Me You Love Me” — A Study of Love Disorders by Stefan Pasternack, M.D. **CPE**

Chair: R. Curtis Bristol, M.D. (Washington, DC)
Presenter: Stefan Pasternack, M.D. (Delray Beach, FL)

The popular culture — especially cable television — depicts the social and individual conflicts of psychological normality and pathology, and especially the derivative successes and failures of curative interventions. Individual lives, families and the culture are transformed for the better or worse. The issues often focus on love, sex and hostility without representing the underlying unconscious psychodynamics. We will explore the TV program, “Tell Me You Love Me” and what it represents about healthy and sick love relations, and the characters and their stories (plot, case history). We examine the mix of the real, imagined and their explanation in psychoanalytic theory and practice.

After attending this session, the participant will learn the current popular view of love, sex and societal values represented by “Tell Me You Love Me,” and what the participants have to say about love and its theories and clinical challenges. In particular, Dr. Pasternack will represent his views about Love Disorders and what psychoanalytic clinicians regard as relevant to their practice and the popular culture.

4:45 p.m.-7:15 p.m.

Special Program #1 for Psychiatric Residents, Psychology and Social Work Students:

Different Roles/Constraints of Systems **CPE**

Chair: Clifford P. Guarnaccia, Ph.D. (Atlanta, GA)
Faculty: Nancy Blieden, Ph.D. (Bloomfield Hills, MI)
Presenter: David Kemmerer, Ph.D. (Watertown, MA)

After attending this session, participants will consolidate their understanding of how the roles of therapist and patient (and sometimes supervisor) shape the clinical work. Participants will also develop new frames of reference for understanding how system constraints (e.g. a 45-minute hour or training clinic policies) impact all dimensions of the patient’s experience of his or her therapist.

5:00 p.m.-7:00 p.m.

Administrative Meeting:

Council of Society Presidents

Chair: Malcolm Beaudett, M.D. (Portsmouth, NH)

Past-presidents, Presidents and Presidents-elects of Affiliate Societies and Centers are invited to attend. The Council of Presidents of Societies operates as an informative group, addressing a variety of topics related to the problems we face in our local Societies and Centers. In the past, we have discussed such topics as 1) revitalizing psychoanalytic practice through outreach efforts; 2) new models for psychoanalytic organizations; 3) the distribution of power in our organization; 4) developing clear ethics procedures and standing ethics committees; 5) the role of presidents and our council in the proposed reorganization of APsA; 6) dealing with threats from NAAP and other competing groups. The Council of Presidents is an opportunity to share experiences and learn from one another.

7:15 p.m.-8:15 p.m.

Social Event: Reception for Psychiatric Residents, Psychology, Social Work Students, and Student/Resident Associates: Wine and Cheese

All are welcome to attend this reception following the Special Program #1 for Psychiatric Residents, Psychology and Social Work Students.

DAILY SCHEDULE

7:30 p.m.-10:00 p.m.

Discussion Group 36: Postmodernism in the Movie *Pan's Labyrinth* (del Toro, 2006)

CANCELLED

Discussion Group 37: Psychoanalysis and China **CPE**

Chair: Elise W. Snyder, M.D. (New York, NY)

Co-chair: Ubaldo Leli, M.D. (New York, NY)

The goal of this discussion group is to inform participants about psychoanalytic, cultural, and technical aspects of practicing psychoanalysis with individuals in China, and of developing viable psychoanalytic programs and institutions there.

After attending this session, participants should be able to understand the current status of psychoanalysis in China, learn about the psychoanalyses, psychotherapies, and supervisions American analysts are doing in China via Skype (a free audio-visual Internet protocol). They will be able to make suggestions and volunteer their assistance. Participants will also meet the officers and learn about the activities of CAPA (China American Psychoanalytic Alliance).

7:30 p.m.-10:00 p.m.

Part I of Two-Session Film Workshop: Popular Adulation: The Cult of the Male Musical Entertainer (The Orpheus Phenomenon): A Psychoanalytic Excursion into Popular Culture **CPE**

Chair: Bruce H. Sklarew, M.D. (Chevy Chase, MD)

Presenter: Leon Balter, M.D. (New York, NY)

This study of popular culture demonstrates and explains an episodic group formation in Western cultural history, the Orpheus Phenomenon. It is characterized by: (1) the centrality of an effeminate male singer whose songs lament frustrated love and oedipal defeat; (2) frenzied young women collectively adoring this male singer; and (3) the association of this group formation with a concurrent egalitarian ideology or movement. This phenomenon may be seen in the figures of Orpheus in Classical Greek and Hellenistic culture, the Troubadour in 12th and 13th Century southern France, and The Crooner in the United States from the 1920s to the present. (Among the Crooners, Rudy Vallee, Bing Crosby, Frank Sinatra, Elvis Presley, and The Beatles are highlighted.) Each of these instances is examined psychoanalytically, historically and culturally. Slides and film/video clips accompany the text.

After attending this session, participants should be able to explain the cultural configuration of the Orpheus Phenomenon and describe several instances in history.

7:30 p.m.

Social Event: Candidate Dinner Party

Come join Candidates from around the country at the Candidate Dinner Party to be held at Veni Vidi Vici. Located in the heart of fun and vibrant Midtown, Veni Vidi Vici is a classic Italian experience at its best. There will be food and drinks, and the charge will be approximately \$45.00 per person. Contact Laura Jensen either by phone (303) 777-4627, or by email at ljensen701@aol.com for more information and to sign up.

FRIDAY, JUNE 20, 2008

8:00 a.m.-9:30 a.m.

Administrative Meeting: Business Meeting of Members and Presentation of Awards

Chair: K. Lynne Moritz, M.D., President, (St. Louis, MO)

The Meeting of Members is an opportunity for all APsAA members to learn about current activities in the Association. The Meeting also features the presentation of numerous awards and recognitions given by the Association both to members as well as to non-members.

Each APsAA member has one vote at the Meetings. All registrants are encouraged to attend.

Awards & Prizes to be presented:

JAPA Prize

Irwin C. Rosen, Ph.D. (Topeka, Kansas)

"Revenge — The Hate that Dare Not Speak its Name: A Psychoanalytic Perspective"

Published in JAPA 55:2

National Psychoanalytic Woman Scholar Award

Ruth S. Fischer, M.D. (Bryn Mawr, PA)

9:45 a.m.-11:15 a.m.

Plenary Address: Psychoanalytic Education Then and Now **CPE**

Chair: Prudence Gourguechon, M.D.

President-Elect (Northfield, IL)

Introducer: Lawrence Inderbitzin, M.D. (Middleburg, PA)

Speaker: Steven T. Levy, M.D. (Atlanta, GA)

Psychoanalysis requires a new model of education if our field is to thrive and expand, given significant

DAILY SCHEDULE

9:45 a.m.-11:15 a.m. (continued)

socio-cultural and economic changes that have rendered our traditional training orientation obsolete. Teaching psychoanalytic knowledge must replace clinical hegemony in our educational institutions. Leadership must be shared among clinicians, scholars from multiple disciplines and research investigators if we are to attract young, talented and creative candidates. Educational programs must become more user friendly, integrating different career trajectories, academic institutional requirements and life-style changes among potential candidates. A university-based prototypical educational model will be described. Potential problems in implementation will be discussed in relation to antiquated biases housed within our traditionally conservative attitudes.

After attending this session, participants should be able to (1) recognize those factors that have led to the need to redesign psychoanalytic educational programs, (2) appreciate the distinctions between training and educational models, (3) appreciate the necessity for psychoanalysis to educate its own scholars and researchers, (4) anticipate problems and potential solutions to the consequences of replacing psychoanalytic clinical practice as the guiding force in psychoanalytic educational programs, and (5) become familiar with one new model for a contemporary psychoanalytic education program within a university setting.

10:00 a.m.-12:00 noon

**Committee Sponsored Workshop:
On Psychotherapy Training [PSYT]**

*Chairs: Alan Pollack, M.D. (Newton, MA)
Sally Rosenberg, D.O. (West Bloomfield, MI)*

This workshop gathers representatives from all the Institutes/Societies together to discuss psychotherapy teaching programs. Our goals are to learn about each other's programs, to share problems and solutions, to discover new ideas and methods, and to maintain channels for continued communication concerning psychotherapy training within the components of the American. The workshop is also of value to those Institutes/Societies that do not currently offer psychotherapy training, but may wish to consider the possibility of establishing a program in the future.

12:00 noon-1:30 p.m.

**Symposium: Psychoanalysis and the Treatment
of Addiction [CPE]**

Presenters: Steven L. Jaffe, M.D. (Atlanta, GA)
Steven M. Sonnenberg, M.D. (Austin, TX)*

This symposium will describe psychodynamic and psychoanalytic approaches to the treatment of addiction. It should be helpful to all mental health professionals who treat addicted individuals, and who have an interest in integrating psychoanalytic strategies in their work. Steven Jaffe, M.D., will describe a treatment for adolescent addicts which integrates twelve step and psychodynamic perspectives. Stephen Sonnenberg, M.D., will describe the phases of treatment he has observed when he works psychoanalytically with high functioning adults with addictions, and how that knowledge guides treatment.

After attending this session, participants should be able to: recognize the unique clinical problems presented by adolescent marijuana addicts; apply psychodynamic strategies in the treatment of adolescent and adult drug addicts; understand the way a psychoanalytically based treatment is consistent with twelve step principles; respond appropriately in the clinical situation because of awareness of the phase of treatment being encountered in the addicted adult analysis.

**Presidential Symposium: The Forever War
on Terror: Dilemmas and Choices [CPE]**

*Chair: K. Lynne Moritz, M.D., President
(Saint Louis, MO)*

Presenter: Charles B. Strozier, Ph.D. (Brooklyn, NY)

Honorary member Dr. Charles Strozier will discuss ways the apocalyptic mindset that underlies the current "war on terror" has changed the role of the United States in global politics, altering principles established by framers of the constitution. He will also answer questions about the candidates and current political campaigns as well.

A professor of history at John Jay College of Criminal Justice in New York, Dr. Strozier is also Director of the College's Center on Terrorism. Dr. Strozier is an historian who writes about the history of psychoanalysis and also about history using psychoanalytic tools of understanding.

After attending this session, participants will gain knowledge of the psychological underpinnings of the global war on terror that has been a hallmark of the Bush Administration's policies since September 11, 2001. The participant will learn about apocalyptic motivations from epistemological, phenomenological, historical, and psychological perspectives. Finally, the participant will deepen his or her understanding of geopolitics and terrorism in this election year.

DAILY SCHEDULE

12:00 noon-1:30 p.m.

Committee Sponsored Workshop: On Psychoanalytic Practice

Chair: David I. Falk, Ph.D. (Beachwood, OH)

The Practice Survey will be discussed by the Committee in detail with interested members of the Association.

12:00 noon-2:00 p.m.

Committee Sponsored Workshop: Study of Women and Psychoanalytic Training **CND**

Chair: Joanne Callan, Ph.D. (Solana Beach, CA)

This ongoing Workshop features issues related to psychoanalytic training — and practice — for women. It is open to all who are interested. Characterized by open and energetic discussions, this year's Workshop will emphasize the experience of clinical practice for Candidates and Early Analysts/Psychoanalytic Psychotherapists, in the particular contexts of multiculturalism/diversity and ethics considerations.

2:00 p.m.-3:30 p.m.

Spotlight on Capitol Hill: Protecting Your Patients, Protecting Your Profession **CPE**

Note: This program is intended to satisfy the requirements of those states that require CME credits in the area of risk management or medical ethics for medical license renewal, but the final judgment for such qualification is made by each state medical board.

*Presenter: Robert Lindsay Pyles, M.D.
(Wellesley Hills, MA)*

This meeting will focus on some of the crucial health legislation currently being considered in Washington, and how it will directly affect your practice. Hear how APsA has become one of the most influential and respected professional associations in the country on issues of significance to psychodynamic therapists in all three branches of federal and state government — the legislative, judicial and executive. Become aware of the challenges ahead and learn how you can make a positive difference.

2:00 p.m.-4:30 p.m.

Special Program #2 for Psychiatric Residents, Psychology and Social Work Students: Terminations **CPE**

*Chair: Suzanne Petren, J.D., Ph.D. (Evanston, WY)
Faculty: James S. Dalsimer, M.D. (Cambridge, MA)
Presenter: Anna Vinter, M.D. (Sacramento, CA)*

After attending this session, participants should be able to understand the vicissitudes of terminating psychotherapy treatments including issues concerning forced termination due to professional training constraints as well as the inevitable psychotherapy tasks around loss.

2:00 p.m.-5:00 p.m.

Panel I: Internet Interaction: The Effects on Patients' Lives and Analytic Process **CPE**

*Chair: Bonnie E. Litowitz, Ph.D. (Chicago, IL)
Panelists: Melvin R. Lansky, M.D. (Los Angeles, CA)
Kimberlyn Leary, Ph.D. (Cambridge, MA)
Caryle Perlman, LCSW (Chicago, IL)
Reporter: Kourosh Dini, M.D. (Chicago, IL)*

The technological revolution of the Internet has had profound effects on access to and flow of information. A novel aspect of this new technology is its expansive capacity for synchronous (and asynchronous) interactions with one or multiple partners who may be known or unknown, real or created. This panel explores the new technological phenomenon of Internet interaction. Panelists will present examples from clinical practice that highlight the effects on patients' lives and on the analytic process.

After attending this session, participants should be able to recognize the different uses of Internet interaction by our patients; identify the psychodynamic functions of those uses in the treatment process; and reflect on the ways this new technology is affecting our patients' lives and therapeutic processes.

2:00 p.m.-5:00 p.m.

Scientific Papers: Section I **CPE**

Chair: Fred L. Griffin, M.D. (Birmingham, AL)

Paper 1 — 2:00 p.m.-3:30 p.m.

Samuel Clemens and Mark Twain: Pseudonym as Act of Reparation

*Author: Richard Waugaman, M.D. (Chevy Chase, MD)
Discussant: Paul Schwaber, Ph.D. (Hamden, CT)*

This paper undertakes an investigation of the psychology of pseudonyms to explore the question of why Edward de Vere used the pseudonym "William Shakespeare." For Samuel Clemens, taking the pen name Mark Twain was a compromise formation that included several impulses and defenses against them — most notably it constituted an act of reparation. After the emotional damage that his first foray into print caused a man he respected, Clemens

DAILY SCHEDULE

2:00 p.m.-5:00 p.m. (continued)

gave that man's ostensible pen name a second and far more distinguished life. He was only one of many people Clemens felt deeply guilty for injuring. Unlike some authors who use pen names for concealment, Clemens did not try to hide his real identity behind his pseudonym. Clemens alluded to his sense of separateness from "Mark Twain" when he wrote of "my double, my partner in duality, the other and wholly independent personage who resides in me."

After attending this session participants should be able to describe the various meanings of Mark Twain's use of his pseudonym, and use this example to explain and generalize other uses of pseudonymity.

Paper 2 — 3:30 p.m.-5:00 p.m.

**When Interpretation Derails the Patient:
The Negative Impact of Certain Misuses
of the Concept of the Unconscious**

Author: Henry J. Friedman, M.D. (Cambridge, MA)
Discussant: Jay Greenberg, Ph.D. (New York, NY)

The insistent focus by classical psychoanalysts on the primacy of the intrapsychic life of the patient, with particular emphasis upon intrapsychic conflict, can, in the author's experience divert or derail the patient from attending to the reality of problematic relationships and issues in their current and ongoing life. In this paper the examination of a case conducted and described by a prominent contemporary conflict oriented classical psychoanalyst serves as the basis for considering the potential negative impact upon the patient's need to attend to their present relationships. This is particularly so when issues of decision making about important interpersonal relationships looms large in the patient's current life. The discussion focuses on the alternative interpretations and interventions that an analyst, for whom the present reality isn't an issue of lesser importance, could have made that would have helped the patient alter his life in a different direction than this analysis did. The importance of remembering that the content of the unconscious can only be speculated about rather than viewed as it is in the classical model is emphasized.

After attending this session, participants will acquire knowledge about how a patient's reality problems are addressed in psychoanalysis. The contrast between the classical approach, which favors and privileges the intrapsychic, as opposed to a contemporary approach that acknowledges interpersonal issues will help educate any clinician to importance differences in treatment modalities.

2:00 p.m.-5:00 p.m.

**University Forum: Enhanced Understanding of
Psychoanalytic Meaning Making: Cross-Cultural
and Cross-Species Contributions [CPE]**

Co-chairs: Alexandra Harrison, M.D. (Cambridge, MA)
David D. Olds, M.D. (New York, NY)
Presenters: Lisa Parr, Ph.D., (Atlanta, GA)*
Robert A. Paul, Ph.D. (Atlanta, GA)

The University Forum will offer a dialogue between practicing psychoanalysts, and a scholar and scientist in the related fields of anthropology and primatology, focusing on the studies of emotional communication and meaning making about oneself and one's relation to the world. Aspects of evolution of human cognition and symbolic capacity, and comparisons between the emotional communication of chimpanzees and humans, will be discussed in terms of how they relate to psychoanalytic theory and practice. The forum will attempt to generate some general principles from the discussion that can be used to enhance psychoanalytic understanding of the therapeutic process.

After attending this session, participants will have acquired an understanding of the evolution of human cognition and the evolution of symbolic capacities in humans. Participants will have gained knowledge about meaning making in other primates as well as some general principles of meaning making that link humans, earlier protohumans, and related primate species, and enhance their understanding of psychoanalytic process and therapeutic change.

5:15 p.m.-6:45 p.m.

**Gertrude and Ernst Ticho Memorial Lecture:
On Believing in One Theory or Another or
One Analyst Reports in Mid-Career [CPE]**

Chair: Warren R. Procci, M.D., Treasurer (Pasadena, CA)
Introducer: Donald I. Meyers, M.D. (New York, NY)
Speaker: Arnold Wilson, Ph.D. (Montclair, NJ)

The Gertrude and Ernst Ticho Memorial Lecture is given by an early to mid-career analyst who is currently making contributions to psychoanalysis and shows promise of making significant future contributions to psychoanalytic science, practice, and thought. The lecture is supported by a generous grant from the Gertrude and Ernst Ticho Charitable Foundation.

This year's lecture will explore certain aspects of how experience is converted into understanding. All psychoanalytic theories must do this, but all do so

DAILY SCHEDULE

5:15 p.m.-6:45 p.m. (continued)

in different ways. Private or implicit theories are more influential in this conversion than those public theories that bid for allegiances within a particular community. Obstacles to how an analyst finds a way to his or her own theory are discussed. The inevitability of theory as self-interpretation is then taken up.

After attending this session, participants should be able to: clarify their own private theories of psychoanalysis; examine how they came to believe in the theories they deem important; appreciate how wishes or needs may be hidden by or override a master theory.

6:45 p.m.-8:30 p.m.

Social Event: Gertrude and Ernst Ticho Memorial Lecture Reception

All are invited to attend this reception sponsored by the Ernst & Gertrude Ticho Charitable Foundation.

SATURDAY, JUNE 21, 2008

7:00 a.m.-9:00 a.m.

Discussion with the Committee on Scientific Activities: The Use of Personal Computers for Psychoanalytic Studies CPE

*Co-chairs: Lee D. Brauer, M.D. (Hartford, CT)
Robert S. White, M.D. (New Haven, CT)
Presenter: Paul W. Mosher, M.D. (Albany, NY)*

Paul Mosher, former chairman of the group and computer expert, will speak on "Encryption." There will be open discussion of other current issues, including the current versions of P-E-P and the 2006 Survey of Psychoanalytic Practice and how it may be disseminated.

After attending this session, participants should be better able to secure and safeguard personal and clinical data used and/or stored on a computer, and understand the theoretical and technical problems which these safeguards present. The participants should also be more familiar with the current material available on the P-E-P edition of the psychoanalytic literature, including the works of Sigmund Freud and new journals. They will also help consider alternative ways to distribute information to the membership, using the current Survey of Psychoanalytic Practice as an example.

7:30 a.m.-8:45 a.m.

Breakfast with a Distinguished Analyst CND CANCELLED

7:45 a.m.-8:45 a.m.

Social Event: COCAA/COCAP Breakfast for All Interested in Work with Children and Adolescents CND

Dr. Ruth Karush and Kerry Kelly Novick, respective chairs of the Committee on Child and Adolescent Analysis (COCAA) and the Committee on Child and Adolescent Psychoanalysis (COCAP), and their committee members are jointly hosting a breakfast. All child analysts, child candidates, and other persons interested in working with children are cordially invited.

9:00 a.m.-11:30 a.m.

Special Program #3 for Psychiatric Residents, Psychology and Social Work Students: Switching Treatments CPE

*Chair: Glenda Wrenn, M.D. (Pine Hill, NJ)
Faculty: Henry J. Friedman, M.D. (Cambridge, MA)
Presenter: Cecile Matip, M.D., M.P.H. (Brooklyn, NY)*

After attending this session, participants will enhance their understanding of how to engage practically and effectively when patient, therapist or both believe that the patient's needs would be served by some decisive change in the therapeutic approach. Participants will also focus on the issues in play when patients seek a new therapist in the context of dissatisfactions with previous treatment experiences.

9:00 a.m.-12:00 noon

Panel II: What Do Analysts Need? CPE

*Chair: Sydney E. Pulver, M.D. (Philadelphia, PA)
Panelists: Darlene Ehrenberg, Ph.D. * (New York, NY)
Jay Greenberg, Ph.D. (New York, NY)
Shelley Orgel, M.D. (New York, NY)
Discussant: Henry F. Smith, M.D. (Cambridge, MA)
Reporter: Jill McElligott, M.S.S., L.S.W. (Narberth, PA)*

This panel will explore the essential elements of the analytic stance and the difficulties analysts may encounter in adhering to the analytic position. It will focus on what each panelist personally relies upon to help them maintain that stance, with particular focus on the degree to which they use and need technical principles, such as neutrality, anonymity, and abstinence as guides to such adherence. We will be especially interested in the subjective experience of the panelists when they are faced with situations in which there is a tension between following those technical principles and "being themselves" in the sense of being more spontaneous, flexible, and intimate.

FRIDAY-SATURDAY

DAILY SCHEDULE

9:00 a.m.-12:00 noon (continued)

After attending this session, participants should be able to describe the various tensions which may arise within the analyst in the psychoanalytic situation, and formulate the various principles that they themselves rely on to resolve those tensions.

Child and Adolescent Panel: Treating the Under-Five Child **CPE**

Chair: Ruth K. Karush, M.D. (New York, NY)

Panelists: Denia Barrett, M.S.W. (Cleveland Heights, Ohio)

Paul C. Holinger, M.D. (Chicago, IL)

Judith A. Yanof, M.D. (West Newton, MA)

Reporter: Mary M. Sickles, M.D. (New York, NY)

This panel is directed to all those who are interested in the minds and development of young children. Both clinicians and researchers will find the panel informative. Our three presenters, Denia Barrett, M.S.W. (Hanna Perkins Center), Judy Yanof, M.D. (Boston) and Paul Holinger, M.D. (Chicago) are talented psychoanalysts. Each will present clinical material which will demonstrate different methods including work via the mother, psychotherapy and psychoanalysis that they use to help the under-five patient. The discussion will focus not only on the case material but also on the child's need for treatment and the rationale for using a particular method with the patient.

After attending this session, participants should be able to identify the need of a pre-latency aged child for treatment; analyze and select an appropriate course of treatment for the young child; understand the developmental context of the child's difficulties and generate competent, psychoanalytically informed interventions that will enable an under-five child to overcome trauma and mitigate developmental deviation.

2:00 p.m.-5:00 p.m.

Panel III: Symptoms in Psychoanalysis: Contemporary Views **CPE**

Chair: Anne Erreich, Ph.D. (New York, NY)

Panelists: Dale Boesky, M.D. (Birmingham, MI)

Dr. Ronald S. Britton (London, UK)*

Steven H. Cooper, Ph.D. (Cambridge, MA)

Reporter: Stephanie Alpert, Ph.D. (New York, NY)

In recent decades the primacy of classical neurotic symptoms such as phobias, obsessional thoughts, compulsions and conversions has been overshadowed by a more contemporary emphasis on painful affects, character difficulties, relationship

struggles, and work inhibition. At this juncture in the history of psychoanalysis it seems appropriate to re-examine how it is that clinicians working out of different theoretical traditions understand symptoms as a clinical category, and how they work with them in practice. To highlight potentially interesting contrasts, we will hear from clinicians whose work grows out of three different traditions: Dale Boesky on contemporary conflict theory, Ron Britton on Kleinian theory, and Steven Cooper on relational theory.

After attending this session, participants should be able to have a better understanding of the following questions: How does one conceptualize symptoms as a clinical category? How does one work with symptoms in one's practice? How does one distinguish symptoms from enactments and character traits?

2:00 p.m.-5:00 p.m.

Part II of Two-Session Film Workshop: Popular Adulation: When Savior turns Sadist: A Face in the Crowd (Kazan, 1957) **CPE**

Chair: Bruce H. Sklarew, M.D. (Chevy Chase, MD)

Discussant: Justin A. Frank, M.D. (Washington, DC)

A Face in the Crowd (1957) has sadly proved to be more applicable today than when it was first produced as an exploration of the power television wielded in the making and breaking of a political star. In his first movie, Andy Griffith plays Lonesome Rhodes, a country hayseed who uses and is used by TV to become a folk hero. Budd Schulberg wrote the script and Elia Kazan directed this overlooked classic — also starring Patricia Neal, Walter Matthau, and Lee Remick — which has direct relevance to modern political life.

"This whole country's just like my flock of sheep! Rednecks, crackers, hillbillies, hausfraus, shut-ins, pea-pickers — everybody that's got to jump when somebody else blows the whistle."

— Lonesome Rhodes

After attending this session, participants should be able to think psychoanalytically about a leader's slide from popular adulation into sadistic contempt toward the people who love him. Concepts of contempt and manic behavior are closely examined in relation to mass television appeal and political power.

2:00 p.m.-5:00 p.m.

Scientific Papers: Section II **CPE**

Chair: Charles P. Fisher, M.D. (San Francisco, CA)

DAILY SCHEDULE

2:00 p.m.-5:00 p.m. (continued)

Paper 1 — 2:00 p.m.-3:30 p.m.

Leaping from Brain to Mind: A Critique of Mirror-Neuron Explanations of Countertransference

Author: Jeanine M. Vivona, Ph.D. (Philadelphia, PA)
Discussant: David D. Olds, M.D. (New York, NY)

Focusing on recent discussions of mirror neuron research for psychoanalytic understandings of countertransference, this paper explicates the multilayered inferential process used to bridge the gap between brain activation data and the intrapersonal and interpersonal processes of psychoanalytic treatment. Three crucial assumptions about the empirical evidence are contrasted here with the actual data of mirror neuron research. The author's objective is to foster more sophisticated consideration of empirical research findings as psychoanalysts learn from and attempt to integrate knowledge from allied fields such as neuroscience.

After attending this session, participants should be able to: differentiate the validated and theorized functions and capacities of the human mirror neuron system; identify assumed inferential links between neuroscience data and psychoanalytic processes; and evaluate competing claims regarding the implications of mirror neuron studies for psychoanalysis.

Paper 2 — 3:30 p.m.-5:00 p.m.

The Fall of Fantasies: A Lacanian Reading of Lack

Author: Mari Ruti, Ph.D. (Toronto, Canada)
Discussant: Donald B. Moss, M.D. (New York, NY)

This paper elucidates to a non-Lacanian audience the broad philosophical foundations of Lacanian theory, particularly the relationship that Lacan draws between the human subject's ontological lack and his or her creative capacities. In an effort to reassess Lacan's critique of ego-psychology, the paper explains why Lacan connects ego-driven fantasies to the constriction of the subject's psychic world, including his or her capacity to flexibly enter into the current of everyday life. It illuminates why Lacan believes that it is only the fall of the subject's most cherished fantasies that empowers him or her to pursue a degree of subjective singularity.

After attending this session, participants should be able to reevaluate the assumption that Lacanian psychoanalysis is incompatible with the therapeutic goals of Anglo-American psychoanalytic approaches, recognize the existential implications of Lacanian theory, and appraise the potential that Lacanian analysis holds for the reorientation of the patient's basic life orientation.

SUNDAY, JUNE 22, 2008

9:00 a.m.-11:30 a.m.

Special Program #4 for Psychiatric Residents, Psychology and Social Work Students:

Over-Identification **CPE**

Chair: Samar Habl, M.D. (Stockbridge, MA)
Faculty: Ralph E. Roughton, M.D. (Atlanta, GA)
Presenter: John Roseman, M.D. (Brookline, MA)

After attending this session, participants should be able to understand the ways in which shared background and sensibilities between therapist and patient may facilitate or hinder the development of the therapeutic alliance and an effective working relationship. Issues around self disclosure and transference/counter transference enactment will be examined

9:00 a.m.-12:00 noon

Panel IV: The Non-Judgmental Analyst Revisited **CPE**

Chair: Donald B. Moss, M.D. (New York, NY)
Panelists: Jane V. Kite, Ph.D. (Cambridge, MA)
Beth J. Seelig, M.D. (Atlanta, GA)
Panelist & Presenter: Helen Stein, Ph.D. (New York, NY)
Reporter: Nancy Crawford, J.D. (Lawrence, KS)

Beginning and advanced analysts alike struggle with how to contend with patients who care little about the impact of their words and actions on others, patients who apparently lack a "capacity for concern." This panel will explore, through the vehicle of a case presentation and discussion, how analyst and patient might understand the patient's lack of capacity for concern and how the analyst might choose to respond to the patient and to manage his or her own counter-transference.

After attending this session, participants should be able to: characterize possible dynamics of patients who lack a capacity for concern; understand the variety of choices that the analyst has in responding to these patients' words and actions, and their implications; and generate ways of handling countertransference likely to emerge in such cases.

ARE YOU INTERESTED IN PARTICIPATING? SUBMIT A CORST ESSAY? LEARN MORE ABOUT WRITE A PAPER FOR THE RALPH

SCIENTIFIC PROGRAM SUBMISSIONS

Deadline: Various dates. See below

Email all Scientific Program Submissions to
cgatto@apsa.org

SCIENTIFIC PAPERS

Deadline: May 1 for the Winter (January) Meeting

- Submissions are done electronically, documents in Microsoft Word (not PDF format).
- Send one blind paper, with all references to the author deleted. The first page of the manuscript must show only the author's name, address, phone number and the title of the paper. The author's name should not appear on any subsequent page.
- The email subject line should state "Scientific Paper Submission" and for which meeting. Scientific Papers (for oral presentation) must be no longer than 18 pages (double spaced, 250 words per page) and timed for 40 minutes reading time. All manuscripts are distributed anonymously to three referees.
- Evaluations are integrated by a subcommittee chair who makes a recommendation for acceptance or rejection.
- If a paper is accepted for the meeting, the *Journal of the American Psychoanalytic Association (JAPA)* has right of first consideration. The paper cannot have been accepted or be under consideration for publication by another journal. *JAPA* submissions must be done separately. Contact *JAPA* Editorial Assistant Lynn Cullen, (404) 727-0397 for instructions.

PANELS

Deadline: October 1, 2008 for the Winter (January 2010) Meeting

Panel proposals must be submitted in writing (two pages maximum, two copies). Each proposal should contain a description of the format and the objective of the panel, as well as names of possible participants (chair, panelists, discussant if there is to be one). All panel proposals are circulated and voted upon in advance by the Program Committee members. Please note the lead time following the submission of panel proposals. All panel proposals are circulated and voted upon one year in advance by the Program Committee members. For example, a proposal that has been submitted for a Winter (January) Meeting is received in October. It is voted on in January and, if accepted, the panel is held the following January. When the committee meets, the eight proposals that have received the greatest number of votes are discussed, and from among these a selection is made.

DISCUSSION GROUPS

Deadline: May 1 for the Winter (January) Meeting

Discussion group proposals must be submitted in writing (two pages maximum, two copies). Decisions concerning new discussion groups are made based upon how subject matter relates to what is already taken up in existing groups, and on space availability.

SYMPOSIA

Deadline: May 1 for the Winter (January) Meeting

Please submit a brief (not more than two pages) proposal under the following headings: rationale, program format, suggested speakers. Proposers should understand that: talking points format with 10 to 15 minutes per presentation, no papers read, minimum of 15 minutes for audience participation and the emphasis is on audience interaction.

AFFILIATE COUNCIL PAPER PRIZE

Deadline: August 1, 2008

The Affiliate Council awards a \$1,000 prize on the basis of peer review to the Affiliate Member who submits the most outstanding scientific paper on a psychoanalytic subject. A \$500 honorarium will be awarded to the semifinalist. *Funding for the honoraria comes from APsaA and the American Psychoanalytic Foundation Committee.*

The winning author will present his/her paper at APsaA's Winter 2009 Meeting in January; the semi-finalist will present his/her paper at the 2010 Annual Meeting in June. The winners must also arrange to present their papers at a local society meeting or community venue.

The winner and semi-finalist may submit their papers for review by the *Journal of the American Psychoanalytic Association (JAPA)* and, if accepted, they will be published as the winner or semi-final paper of the Affiliate Council Paper Prize.

Submission Guidelines: Papers must be unpublished (but may have been presented at professional meetings) and must conform to the Preparation of Manuscript guidelines outlined by *JAPA*, with the exception that the length should not exceed 30 double-spaced typed pages.

Email one Word document containing the manuscript with all references to the author deleted, and email another Word document containing the author's name, email address, address, phone number, and institute affiliation to:

Beverly H. Betz, M.S.W., M.Ed
Co-Chair, Affiliate Council Scientific Paper Prize
(410) 464-9756
Email: bbetzmsw@comcast.net

JOIN APsAA'S SCIENTIFIC PROGRAM? WANT THE 2008 AFFILIATE COUNCIL PAPER PRIZE? OR THE RALPH ROUGHTON PAPER AWARD?

POSTER SESSION RESEARCH SUBMISSIONS

Deadline: October 15, 2008

The subcommittee on Posters and Research Symposia invites submissions with conceptual and/or empirical relevance to psychoanalytic theory, technique, aspects of practice, and effectiveness of psychoanalysis. Of special interest is interdisciplinary scholarship addressing research questions in 'neighboring fields' — including developmental and social psychology, family psychology, neuroscience, anthropology, sociology, literary criticism, as well as historical studies, history of ideas and art history.

For further information, please contact:

Linda Goodman, Ph.D.
lgoodman@ucla.edu

Stuart Hauser, M.D., Ph.D.
stuart_hauser@jbcc.harvard.edu

Linda Mayes, M.D.
Linda.Mayes@yale.edu

CORST SUBMISSIONS

Deadline: September 1, 2008

The Committee on Research and Special Training (CORST) announces the 2008 \$1,000 CORST ESSAY Prize in Psychoanalysis and Culture for essays on psychoanalytically informed research in the biobehavioral sciences, social sciences, arts and humanities. The essay should be no more than 30 pages in length and should neither have been published nor submitted for publication. The CORST essay prize is open to anyone regardless of institutional status or affiliation. Applicants are requested to include their name only on the cover letter. The award winning essay is presented at the January meeting and is reviewed for publication by JAPA.

Essays should be electronically submitted to both:

Lewis A. Kirshner, M.D., Chair, CORST Essay Prize
lewis_kirshner@hms.harvard.edu

and
Dottie Jeffries, Director of Public Affairs, APsAA
djeffries@apsa.org

RALPH ROUGHTON PAPER AWARD

Deadline: August 1, 2008

In honor of the founding Chairperson of the Committee on Gay and Lesbian Issues, the Ralph Roughton Paper Award was established in 1998 to give formal recognition for outstanding contributions to the psychoanalytic understanding of gay men and lesbians, and was expanded in 2007 to include bisexual and transgender issues. The award is intended to encourage psychoanalytic writers to address gay, lesbian, bisexual and transgender issues and to increase awareness and understanding within the psychoanalytic community. The award is presented annually, and carries with it a cash prize of \$500.

The winning author will be invited to present his/her paper at the upcoming Winter Meeting of the American Psychoanalytic Association in January. The winner may submit the paper for review by *Journal of the American Psychoanalytic Association* and, if accepted, it will be published as the winner of the Ralph Roughton Award.

Submission Guidelines: Papers must be unpublished (but may have been presented at professional meetings) and must conform to the Preparation of Manuscript guidelines outlined by *Journal of the American Psychoanalytic Association*, with the exception that the length should not exceed 30 double-spaced typed pages. Paper submissions are welcome from anyone regardless of institutional affiliation. Email one Word document containing the manuscript with all references to the author deleted, and email another Word document containing the author's name, e-mail address, address, phone number, and any Institutional affiliation to:

Gary Grossman, Ph.D.
Chair, Ralph Roughton Paper Prize
(415) 928-4662
Email: gary.grossman@ucsf.edu



The NEW PEP ARCHIVE Version 7 will be published in late Spring 2008!!!

The Eighteen existing Journals included in the PEP Archive are: Annual of Psychoanalysis (1973-2005); Canadian Journal of Psychoanalysis (1993-2005); Contemporary Psychoanalysis (1964-2005); Gender and Psychoanalysis (1996-2001); International Forum of Psychoanalysis (1992-2005); The International Journal of Psycho-Analysis (1920-2005); The International Review of Psycho-Analysis (1974-1992); Journal of the American Academy of Psychoanalysis (1973-2005); The Journal of the American Psychoanalytic Association (1953-2005); NeuroPsychoanalysis (1999-2005); Progress in Self Psychology (1983-2004); The Psychoanalytic Quarterly (1932-2005); The Psychoanalytic Study of the Child (1945-2005); Psychoanalytic Dialogues (1991-2005); Psychoanalytic Inquiry (1981-2005); Psychoanalytic Psychology (1984-2005); Scandinavian Psychoanalytic Review (1978-2005); Studies in Gender and Sexuality (2000-2005) and the Bulletins of the American Psychoanalytic Association and the International Psychoanalytic Association. **In addition** the archive already contains **Freud's Standard Edition**, his correspondence with his major contributors and classic books including the main works of Wilfrid Bion, Melanie Klein and Donald Winnicott.

New content added on V7 updates these existing PEP Journals through 2005 AND adds the following:

- Bulletin of the Anna Freud Centre 1978-1995
- Free Associations 1984-2004
- Modern Psychoanalysis 1976- 2005
- Psychoanalysis and Contemporary Science 1992-1977
- Psychoanalysis and Contemporary Thought 1978-2003
- Psychoanalytic Review 1913-2005
- 20 more Classical Books including Freud's remaining correspondence and some of the works of Bowlby, Ferenczi, Jones, Betty Joseph, Milner, Racker, and Wallerstein.

FOR CD Customers - the New V7 pricing is available on the PEP Website at <http://www.p-e-p.org/news.htm>
Discounts are available for pre-publication purchase.

For WEB customers or users of the Free PEP Literature search, the new V7 content will be switched on automatically and so applied to your searching and viewing. Go to <http://www.pep-web.org/>

More information. You can find out more information or **ORDER ONLINE at a discount** on our website www.p-e-p.org. Also, visit our new feature PEPLiteratureSearch, a FREE SEARCH for ALL found at www.pep-web.org

PEP PRIVATE TUTORIALS

PEP offers Private Tutorials during the American Psychoanalytic Meetings. Call, fax or e-mail Stephanie Short to get the specifics on booking a tutorial using the contact information below. Private instruction should be arranged in advance if possible.

The private tutorial will be adapted to the needs and interests of the participant. You will learn how to use the different search tools, such as searching by context, ranked searches and the advanced query tool. Other functions to be covered include how to print, highlight, annotate, and bookmark. As we enter into the more advanced level, we will develop your search techniques to that you can search meaningfully using logical and Boolean operators and wildcards as well as doing proximity searches..

Private Tutorial: \$100.00 per hour per person - Special group rates for 5 or more people are possible.

Contact Stephanie Short at PEP Customer Service.

Telephone or Fax #: (949) 496-7379

Monday, Tuesday & Saturday 8am to 11am

Wednesday - CLOSED

Thursday 9am to 11am

Friday 7am to 10am

Sunday - CLOSED

E-Mail anytime: Steph@p-e-p.org

PLEASE DO NOT CALL NATIONAL OFFICE FOR INFORMATION OR TO REGISTER.

PEP LIVE DEMONSTRATIONS will take place from **Wednesday through Saturday**.
Times and places for the live demo will be posted at the Meeting.

APsAA OFFICERS, PROGRAM COMMITTEE AND STAFF

OFFICERS

K. Lynne Moritz, M.D	President
Prudence Gourguechon, M.D	President-Elect
Robert M. Galatzer-Levy, M.D	Secretary
Warren R. Procci, M.D	Treasurer

BOARD ON PROFESSIONAL STANDARDS

Calvern E. Narcisi, M.D	BOPS Co-Chair, Co-Secretary
Myrna C. Weiss, M.D	BOPS Co-Chair, Co-Secretary

PROGRAM COMMITTEE

Henry F. Smith, M.D. Chair	Gary Grossman, Ph.D.	Stephen Seligman, D.M.H.
Rosemary H. Balsam, M.D.	Ellen O'Neil Helman, M.S.W.	Helen B. Stein, Ph.D.
Beverly H. Betz, MSW, M.Ed.	Kenneth R. King, M.D.	Jennifer Stuart, Ph.D.
Anne Buchinski, M.D.	Nancy Kulish, Ph.D.	Stuart W. Twemlow, M.D.
Irene Cairo, M.D.	Kimberlyn Leary, Ph.D.	Joan Wheelis, M.D.
Nancy J. Chodorow, Ph.D.	Bonnie E. Litowitz, Ph.D.	Jerome Winer, M.D.
Stanley J. Coen, M.D.	William Massicotte, Ph.D.	Sharon Zalusky, Ph.D.
Margaret Crastnopol, Ph.D.*	(<i>Rep. Canadian Psa. Soc.</i>)*	Richard B. Zimmer, M.D.
Hilli Dagony-Clark, Psy.D.	Donald B. Moss, M.D.	Dwarakanath G. Rao, M.D.
Ruth S. Fischer, M.D.	Alan Pollack, M.D.	(<i>Continuing Education Liaison</i>)
Henry J. Friedman, M.D.	Steven Roose, M.D.	Steven T. Levy, M.D. (Ex Officio)
Lawrence Friedman, M.D.	Dominique Scarfone, M.D.*	
Glen O. Gabbard, M.D.	Robert D. Scharf, M.D.	
Jack Giuliani, Ph.D.	Peter Schou, Ph.D.*	<i>*indicates non member</i>

STAFF

Dean K. Stein	Executive Director
Extension 30, deankstein@apsa.org	
Chris Broughton	Continuing Education & Meetings Registration Manager
Extension 19, cbroughton@apsa.org	
Brian Canty	Manager, Computer Information Services
Extension 17, bcanty@apsa.org	
Sherkima Edwards	Accounts Receivable Clerk
Extension 15, sedwards@apsa.org	
Tina Faison	Administrative Assistant to Executive Director
Extension 23, tfaison@apsa.org	
Carolyn Gatto	Scientific Program & Meetings Director
Extension 20, cgatto@apsa.org	
James Guimaraes	Program Coordinator
Extension 12, jguimaraes@apsa.org	
Dottie Jeffries	Director of Public Affairs
Extension 29, djeffries@apsa.org	
Lisa Jong	Assistant to the Scientific Program and Meetings Director
Extension 28, meetadmin@apsa.org	
Nerissa Steele-Browne	Manager, Accounting Department
Extension 16, nsteele@apsa.org	
Debra Steinke Wardell	Manager, Education and Membership Services
Extension 26, dsteinke@apsa.org	

PROGRAM PARTICIPANTS

A

Adams, Mary L., M.S.W., ASCW	18
Alpert, Stephanie, Ph.D.	26
Aruffo, Roy N., M.D.	11, 13
Ascherman, Lee I., M.D.	8, 11, 14
Austin, Alicia, M.D.	12

B

Bail, Bernard W., M.D.	16
Balsam, Rosemary, M.D.	15
Balter, Leon, M.D.	21
Barrett, Denia, M.S.W.	26
Baudry, Francis D., M.D.	10
Beaudett, Malcolm, M.D.	20
Beaumont, Ralph, M.D.	13, 17
Berger, Sharon L., LCSW	19
Bernstein, Stephen B., M.D.	15, 18
Bernstein, William, M.D.	15
Betz, Beverly H., MSW, M.Ed.	16
Blieden, Nancy, Ph.D.	20
Boesky, Dale, M.D.	26
Bornstein, Melvin, M.D.	15, 18
Brauer, Lee D., M.D.	25
Braun, William, Psy.D.	16
Brett, Elizabeth, Ph.D.	8
Bristol, R. Curtis, M.D.	20
Britton, Dr. Ronald S.	10, 26
Bronstein, Abbot A., Ph.D.	13
Buell, Lynn, M.S.S.W.	13

C

Cairo, Irene, M.D.	10, 16
Callan, Joanne, Ph.D.	23
Cath, Phyllis J., M.D.	13
Chandler, John, J.D.	12
Choi-Kain, Lois W., M.D.	12
Clemens, Norman A., M.D.	19
Coen, Stanley J., M.D.	16
Cohen, Fern, Ph.D.	18
Cooper, Steven H., Ph.D.	26
Crawford, Nancy, J.D.	27
Crowley, Elecia V.O., M.S.	13

D

Dagony-Clark, Hilli, Psy.D.	16, 18
Dalsimer, James S., M.D.	23
Dart, Ann H., LCSW	14
Dietrich, David R., Ph.D.	14
Dini, Kourosh, M.D.	23
Dorsey, Denise L., M.D.	14

E

Ehrenberg, Darlene, Ph.D.	25
Erreich, Anne, Ph.D.	26
Eschbach, Cheryl L., M.D.	19

F

Falk, David I., Ph.D.	23
Fast, Daniel E., M.D.	11
Fischer, Ruth S., M.D.	26
Fisher, Charles P., M.D.	12, 20, 26
Flores, Philip J., Ph.D.	9
Frank, Justin A., M.D.	26
Freeman, Phillip S., M.D., D.M.H.	11
Friedman, Henry J., M.D.	24, 25

G

Geerken, Ingrid M., Ph.D.	19
Goldberg, Steven H., M.D.	17
Goldman, David S., M.D.	12
Gourguechon, Prudence, M.D.	21
Gray, Sheila Hafter, M.D.	19
Greenberg, Jay, Ph.D.	24, 25
Griffin, Fred L., M.D.	9, 12, 23
Grossman, Gary, Ph.D.	11
Grumbach, Ethan M., Ph.D.	9, 11
Grunes, Dorothy T., M.D.	10
Grunes, Jerome M., M.D.	10
Guarnaccia, Clifford P., Ph.D.	12, 20

H

Habl, Samar, M.D.	27
Haggard, Patrick J., M.D.	11
Hall, Jane S., L.C.S.W., F.I.P.A.	12, 19
Hamilton, James, M.D.	20
Hamm, Paula J., M.A., L.P.C.	8
Harrison, Alexandra, M.D.	14, 17, 24
Harwood, Irene N., Psy.D., Ph.D., M.S.W.	9
Hertel, Richard K., Ph.D.	10, 19
Holinger, Paul C., M.D.	10, 26

I

Inderbitzin, Lawrence, M.D.	21
-----------------------------	----

J

Jacobs, Daniel H., M.D.	8, 17
Jacobs, Theodore J., M.D.	17, 20
Jaffe, Steven L., M.D.	22
Jaffe, Susan, M.D.	10
Jeffries, Dottie	10, 15
Johnson, Karen M., M.D.	10
Jones, James, Psy.D., Ph.D., Th.D.	8

K

Kantrowitz, Judy L., Ph.D.	17
Karush, Ruth K., M.D.	8, 26
Kastor, Mae, M.S.W.	14
Keable, Helene, M.D.	11
Kemmerer, David, Ph.D.	20
Kern, James W., M.D.	14
Kieffer, Christine, Ph.D.	9

PROGRAM PARTICIPANTS

Kite, Jane V., Ph.D.27

L

Lansky, Melvin R., M.D.11, 17, 23
Lazenby, Emily, M.D.12
Leary, Kimberlyn, Ph.D.23
Leli, Ubaldo, M.D.21
Levy, Steven T., M.D.14, 21
Litowitz, Bonnie E., Ph.D.23

M

MacVicar, Katherine, M.D.13
Matip, Cecile, M.D., M.P.H.25
McElligott, Jill, M.S.S., L.S.W.25
McGehee, Rex, M.D.8
Meehan, Kevin B., Ph.D.12
Meltzer, Kenneth,13
Meyers, Donald I., M.D.24
Miller, Kathleen, Ph.D.13
Moritz, K. Lynne, M.D.21, 22
Mosher, Paul W., M.D.19, 25
Moss, Donald B., M.D.14, 27

N

Nover, Aimee, Ph.D.13
Novick, Kerry Kelly,8

O

Olds, David D., M.D.24, 27
Orgel, Shelley, M.D.25

P

Palmer, Jonathan, M.D.15
Parker, Judith V., Ph.D.16
Parr, Lisa, Ph.D.24
Pasternack, Stefan, M.D.20
Paul, Robert A., Ph.D.14, 24
Payne, Matthew J., Ph.D.12
Peel, Deborah C., M.D.19
Perlman, Caryle, LCSW23
Petren, Suzanne, J.D., Ph.D.23
Polansky, Marcia, M.S.W., Sc.D.14
Pollack, Alan, M.D.11, 22
Procci, Warren R., M.D.24
Pulver, Sydney E., M.D.25
Pyles, Robert Lindsay, M.D.23

R

Rangell, Leo, M.D.17
Reed, Gail S., Ph.D.10
Reichenthal, Carol, Ph.D.9
Ressler, Kerry J., M.D., Ph.D.20
Roseman, John, M.D.27
Rosen, Irwin C., Ph.D.21

Rosenbaum, Arthur, M.D.15, 18
Rosenberg, Sally, D.O.22
Rosenfeldt, Wolfgang, M.D.19
Roth, Jeffrey D., M.D.9
Roughton, Ralph E., M.D.14, 27
Rubin, Samuel E., M.D.11
Rudnytsky, Peter L., Ph.D.15
Ruti, Mari, Ph.D.27

S

Schiller, Britt-Marie, Ph.D.11, 17
Schmidt-Hellerau, Cordelia, Ph.D.10
Schwaber, Paul, Ph.D.23
Seelig, Beth J., M.D.14, 27
Shaw, Ronnie M., MS, RN, CS16
Sherkow, Susan P., M.D.14
Sickles, Mary M., M.D.26
Skinner, Marilyn, M.D.14
Sklarew, Bruce H., M.D.21, 26
Small, Trevor, Psy.D.16
Smith, Henry F., M.D.25
Snyder, Elise W., M.D.20, 21
Sonnenberg, Steven M., M.D.22
Sosnik, Rogelio A., M.D.14, 16
Spiwak, Alana, M.D.18
Stein, Helen, Ph.D.27
Strozier, Charles B., Ph.D.22
Subrin, Mayer, M.D.14
Swift, Charles D., J.D., LL.M.12

T

Tasini, Miriam, M.D.18

V

Vinter, Anna, M.D.23
Vivona, Jeanine M., Ph.D.27

W

Warren, Jane, Ph.D.14
Warren, Peggy, M.D.15, 18
Waugaman, Richard, M.D.19, 23
Westen, Dr. Laura A.,11
White, Robert S., M.D.25
Wilson, Arnold, Ph.D.24
Winters, Nancy C., M.D.9
Wolman, Diane M., MSW19
Wrenn, Glenda, M.D.25

Y

Yalman-Chanin, Nilufer E., Ph.D.13
Yanof, Judith A., M.D.26

Z

Zerbe, Kathryn J., M.D.9

NOTES

CALLING ALL EDUCATORS, PSYCHOTHERAPISTS, RESEARCHERS, STUDENTS AND RESIDENTS!

What are the Associates programs?



Who's eligible? Psychoanalytic psychotherapists with a minimum of a master's degree and who are licensed by the state in which they practice.

Need more information? For additional activities during the meeting, contact:

Carol Reichenthal, Ph.D., Chair,
Committee on Psychotherapist Associates
(617) 492-7949; carolreichenthal@verizon.net
or
Mae E. Kastor, MSW, Co-chair,
(410) 276-5815; maekastor@aol.com



Who's eligible? Research scientists, research-oriented clinicians, and others interested in psychoanalytically oriented research.

Need more information? For additional activities during the meeting, contact:

Wilma S. Bucci, Ph.D.,
Chair, Committee on Research Associates (RAAPA)
(631) 421-2434; bucci@panther.adelphi.edu
or
John H. Porcerelli, Ph.D., Co-chair
(248) 646-1267; jporcer@med.wayne.edu



Who's eligible? Medical students, psychiatric residents, psychology, social work and graduate students of all academic disciplines.

Need more information? For additional activities during the meeting, contact:

Brenda Bauer, Psy.D.,
Chair, Committee on Student/Resident Associates
(212) 838-4333, x224; bbe21@hotmail.com.



Who's eligible? Teachers and administrators at all levels of education, from pre-school through college, who are interested in the applications of psychoanalytic principles in classrooms and who are sponsored by an APsaA Member.

Need more information? For additional activities during the meeting, contact:

Tillie Garfinkel, M.Ed.
Chair, Liaisons to Schools Committee
(301) 384-4513; til.g@comcast.net

How do I enroll?*

Enrollment Forms are available online at: www.apsa.org
(click on Associate Programs under Membership and Associates)
and
at the display tables near the Registration Desk
and/or
call 212-752-0450, ext. 26 for further assistance.

****Individuals who meet the qualifications for Affiliate and Active Membership in APsaA are not eligible to join the Associates program.***

WINTER 2009 MEETING PROGRAM HIGHLIGHTS WALDORF ASTORIA HOTEL JANUARY 14-18, 2009

PLENARIES

FRIDAY, JANUARY 16, 2009



9:45 a.m.-11:15 a.m.

Killing Caesar

Speaker: *K. Lynne Moritz, M.D.*



5:15 p.m.-6:45 p.m.

Privacy and Disclosure in Psychoanalysis

Speaker: *Judy L. Kantrowitz, Ph.D.*

©Karin Rosenthal 2008

PANELS

Panel: Bending the Frame and Judgment Calls in Everyday Practice

Chair: *Nancy Chodorow, Ph.D. (Cambridge, MA)*

Panel: The Interpretation of Action in Analysis

Chair: *Henry F. Smith, M.D. (Cambridge, MA)*

Panelists: *Dr. Paul Denis* (Paris, France)*

Jay Greenberg, Ph.D. (New York, NY)

Dr. John Steiner (London, UK)*

Panel: The Role of Dreamwork in Contemporary Psychoanalytic Practice

Chair: *Glen O. Gabbard, M.D. (Houston, TX)*

Panelists: *Vincenzo Bonaminio, Ph.D.* (Rome, Italy)*

Robert Michels, M.D. (New York, NY)

Presenter: *Dr. Paul Denis* (Paris, France)*

Panel: Sex and Shame: Clinical Dilemmas

Chair: *Ellen O'Neil Helman, LCSW (Miami Beach, FL)*

Panelists: *Rosemary H. Balsam, M.D. (New Haven, CT)*

Dianne Elise, Ph.D. (Oakland, CA)*

Joseph D. Lichtenberg, M.D. (Bethesda, MD)

Discussant: *Ethel S. Person, M.D. (New York, NY)*

Child and Adolescent Panel: The Adolescent in Analysis Who Wants to Go Off to College: Delay, Stay Local, Terminate or Continue by Telephone?

Research Panel on Borderline Personality Disorder

Panelists: *Eric A. Fertuck, Ph.D. (New York, NY)*

Glen O. Gabbard, M.D. (Houston, TX)

Harold W. Koenigsberg, M.D. (New York, NY)*

TWO-DAY CLINICAL WORKSHOPS

Workshop Series in Analytic Process and Technique

Chair: *Irene Cairo, M.D. (New York, NY)*

Featured Discussant: *Dr. John Steiner* (London, UK)*

Workshop Series in Analytic Process and Technique

Chair: *Nancy J. Chodorow, Ph.D. (Cambridge, MA)*

Featured Discussant: *Dr. Paul Denis* (Paris, France)*

Workshop Series in Analytic Process and Technique

Chair: *Sharon Zalusky, Ph.D. (Los Angeles, CA)*

Featured Discussant: *Patrick Miller, M.D.* (Paris, France)*

Psychotherapy Technique and Process

Chair: *Alan Pollack, M.D. (Newton, MA)*

Featured Discussant: *Dan H. Buie, M.D. (Wellesley Hills, MA)*

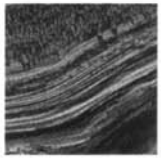
Child and Adolescent Two-Day Clinical Workshop

Chair: *Ruth S. Fischer, M.D. (Bryn Mawr, PA)*

Featured Discussant: *Alexandra Harrison, M.D.
(Cambridge, MA)*

*The Meeting's Scientific Program
will also feature a rich array of discussion groups,
the University Forum, Symposiums, Meet-the-Author
as well as many other exciting sessions.*

We look forward to seeing you in January!



Frenkel & Co., Inc.
International Insurance Brokers Est. 1878

Serving the
Professional Liability Insurance
needs of the
American Psychoanalytic
Association since 1972

- Professional Liability
- Admitted (A+) Paper
- Business Insurance
- Personal Insurance including
Homeowners/Automobile
- Directors & Officers
- Employment Practices Liability

Program Administrator
Margaret Church
201.356.3422
mchurch@frenkel.com

Try JAPA Online at japa.sagepub.com



EDITOR

Steven T. Levy, M.D.
*Emory University
Psychoanalytic Institute*

j a p a
Journal of the American Psychoanalytic Association

APsaA Members receive preferred subscription rates that include online access. Subscribe today by calling (212) 752-0450, Ext 15.


The **Journal of the American Psychoanalytic Association (JAPA)** is the preeminent North American psychoanalytic scholarly journal. It is an invaluable, peer-reviewed resource for psychoanalysts, psychologists, psychiatrists, and other mental health professionals that publishes original articles, research, plenary presentations, panel reports, abstracts, commentaries, editorials and correspondence. In addition, the **JAPA** Review of Books provides in-depth reviews of recent literature.

Now published in association with SAGE, **JAPA** is available online through the SAGE Journals Online platform. Your member subscription includes free online access with the following features:

- Full-text access back to Volume 1, Issue 1
- Free alerting services, including contents alerts, citation alerts, and RSS feeds
- Advanced access to **JAPA** articles through publish-ahead-of-print technology
- Monthly updates to the Most-Read and Most-Cited articles
- Free inter-journal reference linking

Thomson Scientific (formerly ISI) Journal Citation Reports
2006 Ranking: 2/13 in Psychology/Psychoanalysis • 41/77 in Psychiatry
Impact Factor: 1.440


www.sagepub.com


A M E R I C A N
P S Y C H O A N A L Y T I C
A S S O C I A T I O N
www.apsa.org