

Meeting Registration Update

New: Expanded Registration Hours

Evening Registration has now been introduced on **Wednesday and Thursday evenings** to accommodate those who are unable to register or pick-up their registration materials during the regular registration hours.

We expect a tremendous response to **Evening Registration**. For those who register in advance, badges may be picked up in the Back Terrace (Terrace Level) on Wednesday, June 14, 2006 from 7:15 P.M.-7:45 P.M. and Thursday, June 15, 2006 from 7:15 P.M.-7:45 P.M. You may also pay to register at that time.

New: Streamlined Registration Categories

In an effort to simplify our registration process, registration categories have been streamlined.

Name Badge Policy

In an effort to respect those who have registered for the Meeting, please be aware that **name badges are required to attend all sections** of the Scientific Program. Individuals who are not wearing name badges or not wearing the proper name badge will be asked to register. Meeting rooms will be monitored to enforce this policy.

Participants who have lost their badge may have one reprinted at the On-Site Registration Desk after showing a photo I.D.

GREAT NEWS CONCERNING CE'S!

For those who wish to obtain continuing professional education credit, there will be no additional fee from the American Psychoanalytic Association; it is simply included with your registration fee. Please go to the Continuing Education Desk (Back Terrace; Terrace Level) for specifics about how to receive a Certificate of Attendance.

Photo Credits:

Capitol Dome (inside): © Washington, DC Convention & Tourism Corporation (WCTC)

US Capitol (outside): © Washington, DC Convention & Tourism Corporation (WCTC)

Cherry trees, Washington Monument in background:

Photo by James P. Blair/Getty Images, spouse of Washingtonian APsA member Elise Ostroff Blair

TABLE OF CONTENTS

Social Events and Special Activities	
Committee-Sponsored Workshops	
Exhibitors	
Psychoanalytic Electronic Publishing, Inc. – CD-ROM	
Continuing Professional Education Credit	
Of Interest to Candidates	
Calling All Educators, Psychotherapists, Researchers, Students, and Newcomers!	
A Guide to the Scientific Program and Meeting Registration	
Explanation of Footnotes	
Daily Schedule	
Scientific Program	
Officers and Staff	
Planning Committees	
Program Participants	
Submissions Guidelines	
Floor Plans	

95TH ANNUAL MEETING OF THE AMERICAN PSYCHOANALYTIC ASSOCIATION

takes place at:

Hilton Washington
 1919 Connecticut Avenue, NW
 Washington, DC 20009
 (between Florida Avenue and "T" Street)
 202-483-3000, Main Hotel (phone)
 202-232-0438 Main Hotel (fax)
 1-800-HILTONS, Reservations (Group Code PSY)

REGISTRATION will be located in the Back Terrace (Terrace Level)

Wednesday, June 14, 2006 8:30 A.M.-5:00 P.M.
 7:15 P.M.-7:45 P.M.
Thursday, June 15, 2006 8:30 A.M.-5:00 P.M.
 7:15 P.M.-7:45 P.M.
Friday, June 16, 2006 8:30 A.M.-5:15 P.M.
Saturday, June 17, 2006 8:30 A.M.-5:00 P.M.
Sunday, June 18, 2006 8:30 A.M.-12:15 P.M.

EXHIBITS will be located in the Back Terrace (Terrace Level)
Wednesday, June 14, 2006 1:00 P.M.-5:00 P.M.
Thursday, June 15, 2006 8:30 A.M.-5:00 P.M.
Friday, June 16, 2006 8:30 A.M.-5:15 P.M.
Saturday, June 17, 2006 8:30 A.M.-5:00 P.M.
Sunday, June 18, 2006 8:30 A.M.-12:15 P.M.

HEADQUARTERS OF THE ASSOCIATION will be located in Bancroft (Terrace Level)

PRESS ROOM: The Press Room will be located in Headquarters, Bancroft (Terrace Level)

ADMINISTRATIVE MEETINGS

BOARD ON PROFESSIONAL STANDARDS

Wednesday, June 14, 2006 8:00 A.M.-5:00 P.M.
 International Ballroom East (Concourse Level)

EXECUTIVE COUNCIL

Thursday, June 15, 2006 8:00 A.M.-4:30 P.M.
 International Ballroom East (Concourse Level)

BUSINESS MEETING OF MEMBERS

Friday, June 16, 2006

Members' Coffee 7:30 A.M.
 Lincoln Ballroom (Concourse Level)

Business Meeting 8:00 A.M.
 Lincoln Ballroom (Concourse Level)

Chair: Jon Meyer, M.D.
President, The American Psychoanalytic Association

Awards & Prizes 8:30 A.M.
 JAPA Prize
 Scientific Paper Prize
 National Psychoanalytic Woman Scholar Award

State of the Association —
Jon Meyer, M.D. 9:00 A.M.

New Business

Adjournment 9:30 A.M.

NEWCOMERS TO THE MEETING

You are invited to the Reception for Affiliate Members, Candidates, Associates (Educator, Psychotherapist, Research, Student/Resident), Newcomers and Fellows

Saturday, June 17, 2006 5:15 P.M.-7:15 P.M.

..... Gazebo (Poolside)

SOCIAL EVENTS AND SPECIAL ACTIVITIES

PSYCHOANALYSTS MEET THE PRESS: A PRESS BRIEFING WITH PSYCHOANALYSTS ON CURRENT EVENTS AND ISSUES OF CONTEMPORARY CONCERN

During the Meeting, there will be a press briefing for those journalists who are attending. In an ongoing effort to promote psychoanalysis to the public via the media, the Committee on Public Information invites journalists to be a part of the meeting. APsaA is following a longstanding practice among professional associations of engaging the media by inviting them to attend the association's scientific meeting.



APSAA ACADEMY – PART I: COMMUNICATING WITH CONGRESS: CHANGING THE WORLD ONE CONGRESSMAN AT A TIME

Wednesday, June 14, 2006 5:30 P.M.-6:30 P.M.

Lincoln Ballroom East (Concourse Level)

APsaA members are quite skilled at making the world a better place one patient at a time. It is also important for APsaA members to use their skills to make the world a better place one Congressman at a time.

Our system of representational government cannot work unless our representatives hear from us. Your ability to help your patients and provide quality psychotherapy can be impaired or eliminated unless you alert your Congressional representatives of the consequences of their actions.

In this session, your Washington representative and several of your politically active colleagues will provide an update on federal legislative issues of importance to your practice as well as practical guidance with respect to how you can use your skills and experience in communicating with members of Congress.

This session is intended for anyone regardless of whether they will be attending the Breakfast Capitol Forum on Thursday, June 15 from 8:30 A.M.-10:00 A.M.

RECEPTION TO WELCOME GAY AND LESBIAN PARTICIPANTS

Wednesday, June 14, 2006 7:15 P.M.

Hemisphere Room (Concourse Level)

Sponsored by the Joint Committee on Gay and Lesbian Issues, all are welcome to attend this reception following the Discussion Group on New Perspectives on Homosexuality.



APSAA ACADEMY, PART II: THE CAPITOL FORUM BREAKFAST: THE RIGHT TO HEALTH INFORMATION PRIVACY IN A HEALTH INFORMATION TECHNOLOGY SYSTEM, CO-SPONSORED WITH THE NASW

Thursday, June 15, 2006 8:30 A.M.-10:00 A.M.

This section of the APsaA Academy will be held at the U.S. Capitol.

Join us at the Capitol. With key legislators such as Congresswoman Nancy Johnson, Congressman Ed Markey, and Congressman Patrick Kennedy (all invited) we will examine the importance to quality health care of preserving the patient's right to health information privacy in a national interoperable health information technology system.

LIMITED TO THOSE WHO HAVE PRE-REGISTERED. YOUR NAME MUST BE ON THE LIST IN ORDER TO PARTICIPATE. THE BUS WILL DEPART AT 7:30 A.M. SHARP FROM THE "T" STREET ENTRANCE, TERRACE LEVEL. A PHOTO I.D. IS REQUIRED TO ENTER THE CAPITOL.

COCAA/COCAP CHILD RECEPTION

Thursday, June 15, 2006 12:30 P.M.-2:00 P.M.

William H. Edwards, Jr. Exec. Board (Lobby Level)

Dr. Phyllis Tyson. and Kerry Kelly Novick, respective chairs of COCAA and COCAP, and their committee members are jointly hosting a coffee and cookie reception. All child analysts, child candidates, and people interested in working with children are cordially invited.

NATIONAL WOMAN PSYCHOANALYTIC SCHOLAR PROGRAM BENEFIT

Thursday, June 15, 2006 5:45 P.M.

PLAN TO ATTEND THIS SPECIAL EVENING!!!!!!

NATIONAL WOMAN PSYCHOANALYTIC SCHOLAR PROGRAM EVENT

Wine and Cheese @ 5:45 p.m.
and Special Speaker @ 6:30 p.m.

Specific details on the location of the benefit and speaker will be available at the meetings.

RECEPTION FOR PSYCHIATRIC RESIDENTS, PSYCHOLOGY, SOCIAL WORK STUDENTS AND STUDENT/RESIDENT ASSOCIATES

Thursday, June 15, 2006 7:15 P.M.

Thoroughbred Room (Concourse Level)

All are welcome to attend this reception following the Special Programs #1 for Psychiatric Residents, Psychology and Social Work Students.

SOCIAL EVENTS AND SPECIAL ACTIVITIES

THE DEBUT OF APSAA'S NEW WEBSITE

WWW.APsaA.ORG

Friday, June 16, 2006 11:15 A.M.-11:30 A.M.
..... Lincoln Ballroom (Concourse Level)

Don't miss the debut of APsaA's new website (immediately following the Plenary Presentation). During this brief audiovisual presentation, APsaA staff will present an overview of the new site, highlighting the expanded online services for members including Meeting Registration; the section on Training and Education with a direct portal to programs at APsaA's accredited training institutes; an expanded public information section; and the "virtual meeting rooms" for APsaA's committees.



YELLOW BRICK PROGRAM

Friday, June 16, 2006 11:30 A.M.-12:30 P.M.
..... Back Terrace (Terrace Level)

Come meet Dr. Jesse Viner, Founder and Chairman of Yellowbrick, in the exhibit area. Yellowbrick is a private physician-owned and-operated organization whose mission is to create a psychiatric healthcare system for emerging adults with emotional and behavioral problems. The vision of the Yellowbrick model is to recognize and address the unique developmental challenges of this population through a therapeutic system that emphasizes the need for expert multi-specialty evaluation, a spectrum of therapeutic residences, research-based strategies and life-skills interventions. The core values are integrity, excellence in innovation and a commitment to life-enhancing outcomes.

SPECIAL PROGRAM FOR MID-CAREER ANALYSTS

Friday, June 16, 2006 12:00 NOON-1:30 P.M.
..... Military Room (Concourse Level)

Have you ever wondered how to join an APsaA committee and, if you did, if you could find an audience for your ideas? Do you have half a dozen ideas for a paper or a work in progress that you want to present in a supportive environment? Do you need a place to discuss a case that feels too complicated or that doesn't fit neatly into our psychoanalytic theories or conventions? Come to the regular meeting of the Program for Mid-Career Analysts. This is a place to try out creative and innovative ideas.

PROGRAM WITH JOURNALISTS AND PSYCHOANALYSTS: THE DISPOSABLE AMERICAN: JOB LAYOFFS AND THEIR CONSEQUENCES

Friday, June 16, 2006 12:00 NOON-1:30 P.M.
..... Jefferson Ballroom East (Concourse Level)

Chair: Theodore Jacob, M.D.
Faculty: Louis Uchitelle

New York Times business editor Louis Uchitelle will describe a journalist's discovery of the damage to mental health from layoffs — how this damage manifests itself in the lives of the men and women whose stories he tells in *The Disposable American: Layoffs and Their Consequences*. He'll argue that layoffs, multiplied millions of times, undermine public health and that psychoanalytic and psychiatric organizations should flag this unrecognized source of illness.

INAUGURAL GERTRUDE & ERNST TICHO MEMORIAL LECTURE: THE SECOND PERSON

Friday, June 16, 2006 5:15 P.M.-6:45 P.M.
..... Lincoln Ballroom (Concourse Level)

We invite you to attend the inaugural Gertrude and Ernst Ticho Memorial Lecture, the first-ever supported lectureship in the American Psychoanalytic Association. This lectureship has been created to recognize and honor promising early to mid-career analysts. Given the fact that the Tichos practiced in Washington, D.C., it is especially fitting that the first lecture, to be given by APsaA member Bonnie E. Litowitz, Ph.D., will take place at this Washington meeting. Certainly, this lectureship will evoke memories of the Tichos' devotion to mentoring and developing the careers of younger colleagues.

GERTRUDE AND ERNST TICHO MEMORIAL LECTURE RECEPTION

Friday, June 16, 2006 6:45 P.M.-8:30 P.M.
..... Gazebo (Poolside)

All are invited to attend this reception sponsored by the Ernst & Gertrude Ticho Charitable Foundation.

UNIVERSITY FORUM: IMPLICIT ASSOCIATIONS: RACE IN POLITICS AND CLINICAL PRACTICE

Saturday, June 17, 2006 9:00 A.M.-12:00 NOON
..... Jefferson Ballroom West (Concourse Level)

This feature of the program is designed to facilitate a dialogue between analysts and academics from related fields. As the influence of psychoanalytic thinking has grown in academic settings, interdisciplinary studies have become more and more accepted as a core aspect of the psychoanalytic enterprise. The University Forum reflects this interest and provides an opportunity for analysts and academics to come together to learn from each other by discussing a topic of common interest.

SOCIAL EVENTS AND SPECIAL ACTIVITIES

ENCORE SYMPOSIUM: THE PSYCHODYNAMIC DIAGNOSTIC MANUAL (PDM)

Saturday, June 17, 2006

..... 12:00 NOON-1:30 P.M.
..... Lincoln Ballroom (Concourse Level)

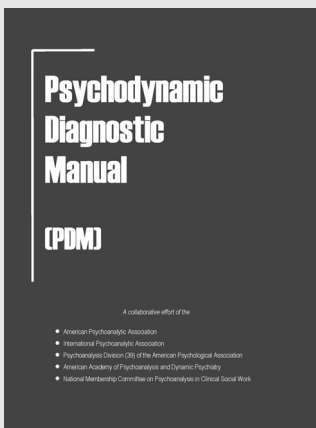
Chair: *Stanley I. Greenspan M.D.*

Panelists: *Jon Meyer, M.D.*

*Nancy McWilliams, Ph.D.**

Jonathan Shedler, Ph.D.

This spring heralds a milestone for the psychoanalytic, psychodynamic understanding of the human condition — the publication of *The Psychodynamic Diagnostic Manual (PDM)*. The long overdue PDM reintroduces dynamic concepts to diagnosis, prognosis, and treatment selection in the clinical setting — and represents an extraordinary opportunity for psychoanalysis and psychotherapy.



On this important occasion, APsA has dedicated an Encore Symposium to providing Meeting registrants with an overview of the PDM by a distinguished faculty. This symposium will highlight the PDM's value not only to the clinician but also to the educator for whom it will provide an alternative to the use of the DSM series as a textbook.

The PDM is a collaborative effort by the American Psychoanalytic Association, the International Psychoanalytical Association, Division 39 of the American Psychological Association, the American Academy of Psychoanalysis, and the National Membership Committee on Psychoanalysis in Clinical Social Work, Inc. whose hope is that the PDM will become as widely known and cited as the DSM.

ORIENTATION FOR TRAINING FOR SOFAR PRO BONO PROGRAM

Saturday, June 17, 2006 2:00 P.M.-4:00 P.M.

..... Caucus Room (Terrace Level)
SOFAR, Strategic Outreach to Families of All Reservists, a program in partnership with the American Psychoanalytic Association, seeks volunteers for a workshop to train and orient psychoanalysts to work pro bono with family members of the Reserve and National Guard deployed to Iraq and Afghanistan.

SOFAR (www.sofarusa.org) is replicating nationally a successful program in New England, that utilized volunteers from analytic institutes in Boston. Our focus is working with family members to prevent or treat "secondary trauma" and to manage the impact on the family of returning soldiers' suffering with anxiety, depression and or PTSD. SOFAR works preventatively with children, the more vulnerable members of the family system.

The workshop will provide orientation and materials, to assist the development of teams in APsA Institutes nationwide.

MISCELLANEOUS INFORMATION

MEMBERS PHOTO EXHIBIT

We are happy to present the 2nd Annual Members' Photo Exhibit located in the Exhibit/Registration area in the Back Terrace on the Terrace Level.

Stop by to view the photographic works of members and staff.

PLEASE BE AWARE THAT NAME BADGES
ARE REQUIRED TO ATTEND ALL SECTIONS
OF THE SCIENTIFIC PROGRAM.

BABY SITTING SERVICES

contact the Hilton Washington Concierge
for suggestions.

Reminder: As a courtesy to other meeting attendees, please be sure to **turn off your cell phones** during all sessions of the scientific program.

FUTURE MEETING DATE

WINTER 2007 MEETING, January 17-21, 2007
New York, NY – Waldorf-Astoria Hotel

EXHIBITORS

APsaA is pleased to have the participation of the following exhibitors at the **95th Annual Meeting**.

Be sure to visit their displays in the Exhibit Hall located on the Terrace Level.

AMERICAN PSYCHIATRIC PUBLISHING, INC.

1000 Wilson Blvd, Suite 1825
Arlington, VA 22209
Toll Free: (800) 368-5777
www.appi.org

ASSOCIATION BOOK EXHIBIT

8403L Richmond Highway
Alexandria, VA 22309
Phone: (703) 619-5030
www.bookexhibit.com

FRENKEL AND CO., INC.

101 Hudson Street
Jersey City, NJ 07302
Phone: (201) 356-3422
www.frenkel.com

MENTAL HEALTH RESOURCES

44 West Bridge Street
Catskill, NY 12414
Toll Free Number: (877) 647-0202

THE OTHER PRESS

2 Park Avenue
New York, NY 10016
Toll Free: (877) 843-6843
www.otherpress.com

W.W. NORTON AND CO.

500 Fifth Avenue
New York, NY 10110
Phone: (212) 354-5500
www.wwnorton.com
"My Father Married Your Mother: Writers Talk about Stepparents, Stepchildren, and Everyone in Between"
Editor: Anne Burt
www.anneburt.com

PSYCHOANALYTIC
ELECTRONIC
PUBLISHING



IN CELEBRATION OF FREUD'S 150TH BIRTHDAY, THE NEW PEP ARCHIVE VERSION 6 (1886-2002) WILL BE AVAILABLE DECEMBER 2006

The new **PEP A1v6** will feature the Standard Edition of the **Complete Psychological Works of Sigmund Freud (1886-1939)**, searchable, hyperlinked and with the FULL-TEXT of the **EIGHTEEN** of the world's leading psychoanalytic journals.

You can find out more information or **ORDER ONLINE** at a discount on our website www.p-e-p.org.

Also, visit our new feature **PEPLiteratureSearch**, a FREE **SEARCH** for **ALL** found at www.pep-web.org

PEP PRIVATE TUTORIALS OFFERED!

PEP offers Private Tutorials during the American Psychoanalytic Meetings. Call, fax or e-mail Stephanie Short to get the specifics on booking a tutorial. Telephone and Fax (949) 496-7379; E-mail: Steph@p-e-p.org. Private instruction should be arranged in advance if possible.

The tutorial includes basic instructions on getting started. The PEP CD ROM's functionality will be taught, as you will learn how to use ALL THE MANY different search tools and how to print, highlight, annotate, and bookmark. At the more advanced level, we will develop your skills for refined searching using logical and Boolean operators and wildcards and proximity searches.

It is better to bring your own laptop computer. However, having your own computer is not a requirement. The private tutorial will be adapted to the needs and interests of the participant.

Private Tutorial: \$ 100.00 per hour

Special group rates for 5 or more people are possible.

For INFORMATION, RESERVATIONS AND ENROLLMENT contact Stephanie Short at PEP Customer Service. Telephone: (949) 496-7379 or Fax anytime: (949) 496-7379

Wednesday & Thursday 4:00 P.M.-7:00 P.M. PST

Friday 6:30 A.M.-9:30 A.M. PST

Saturday 7:00 A.M.-12:00 NOON PST

E-Mail anytime: Steph@p-e-p.org

PLEASE DO NOT CALL NATIONAL OFFICE FOR INFORMATION OR TO REGISTER.

PEP LIVE DEMONSTRATIONS will take place from Wednesday through Saturday. Times and places for the live demo will be posted at the Meeting.

New from

OTHER PRESS

Freud Along the Ganges

Psychoanalytic Reflections on the People and Culture of India

Salman Akhtar, Editor

PB • ~~\$27~~ Conference price: \$22

Forms of Intersubjectivity in Infant Research and Adult Treatment

Beatrice Beebe, Steven Knoblauch, Judith Rustin, and Dorianne Sorter

& Discussants Theodore Jacobs and Regina Pally
PB • ~~\$25~~ Conference price: \$20

- NOW IN PAPERBACK
- GRADIVA AWARD WINNER
- GOETHE PRIZE WINNER

Affect Regulation, Mentalization, and the Development of the Self

Peter Fonagy, et al.

PB • ~~\$37~~ Conference price: \$30

- GRADIVA AWARD WINNER

Understanding Dissidence and Controversy in the History of Psychoanalysis

Martin S. Bergmann, Editor

PB • ~~\$28~~ Conference price: \$22

Misunderstanding Freud

Arnold Goldberg

A JAPA Book – Edited by Fred Busch

HC • ~~\$35~~ Conference price: \$28

Freud

Jacques Sédot

Translated by Susan Fairfield

PB • ~~\$23~~ Conference price: \$20

- NOW IN PAPERBACK

Therapeutic Action

An Earnest Plea for Irony

Jonathan Lear

PB • ~~\$22~~ Conference price: \$18

Practical Psychoanalysis for Therapists and Patients

Owen Renik

PB • ~~\$27~~ Conference price: \$22

On Being Normal and Other Disorders

A Manual for Clinical Psychodiagnostics

Paul Verhaeghe

Translated by Sigi Jottkandt

PB • ~~\$35~~ Conference price: \$28

Subjective Experience and the Logic of the Other

Rómulo Lander

Translated by Judith Filc

PB • ~~\$25~~ Conference price: \$20

Mourning and Modernity

Essays in the Psychoanalysis of Contemporary Society

Isaac D. Balbus

PB • ~~\$25~~ Conference price: \$20

- NOW IN PAPERBACK
- GRADIVA AWARD WINNER

Between Emotion and Cognition

The Generative Unconscious

Joseph Newirth

PB • ~~\$22~~ Conference price: \$18

My Life in Theory

Leo Rangell

A JAPA Book – Edited by Fred Busch

HC • ~~\$35~~ Conference price: \$28

Hate and Love in Psychoanalytical Institutions

The Dilemma of a Profession

Jurgen Reeder

PB • ~~\$30~~ Conference price: \$24

What Lacan Said about Women

A Psychoanalytic Study

Colette Soler

Translated by John Holland

PB • ~~\$25~~ Conference price: \$20



OTHER PRESS Come visit our table to purchase books at the special conference discount.
Or contact us: toll free 1-877-843-6843 • sales@otherpress.com • www.otherpress.com

COMMITTEE-SPONSORED WORKSHOPS

These Committee-Sponsored Workshops are open to all meeting registrants (unless otherwise indicated).

Additional registration for these Workshops is not required; you are welcome to walk-in at the door.

Please see Workshop handout, available at the Registration Desk, for description of individual Workshops.

TUESDAY, JUNE 13, 2006

9:00 A.M.-12:00 NOON

WORKSHOP OPEN TO ALL INTERESTED

FACULTY OF CHILD AND ADOLESCENT

ANALYSIS PROGRAMS

..... Grant (Terrace Level)

Chair: Dr. Phyllis Tyson

2:00 P.M.-4:30 P.M.

WORKSHOP FOR DIRECTORS OF INSTITUTES AND CHAIRS OF EC COMMITTEES.

Open to Directors of Institutes and Education Committee Chairs of APsaA Accredited Institutes and New Training Facilities.

..... Military Room (Concourse Level)

Chair: Dr. Myrna Weiss

WEDNESDAY, JUNE 14, 2006

12:15 P.M.-1:45 P.M.

COPE: WORKSHOP FOR CHILD/ADOLESCENT SUPERVISORS AND ASSOCIATE CHILD/ADOLESCENT SUPERVISORS

..... Hamilton (Terrace Level)

Chairs: Paula G. Atkeson, D.S.W.

and Anita G. Schmukler, D.O.

THURSDAY, JUNE 15, 2006

12:00 NOON-1:30 P.M.

WORKSHOP ON LOCAL OUTREACH

..... Hamilton (Terrace Level)

Chair: Dottie Jeffries,

Director of Public Affairs

12:00 NOON-2:00 P.M.

WORKSHOP ON TEACHING ABOUT ANALYTIC CASE WRITING

..... Jackson (Terrace Level)

Chair: Dr. Stephen B. Bernstein

Co-Chairs: Dr. Ellen Blumenthal

Dr. Melvin Bornstein

Dr. Jonathan Palmer

Dr. Arthur Rosenbaum

Dr. Peggy Warren

5:00 P.M.-7:00 P.M.

COUNCIL OF SOCIETY PRESIDENTS

..... William Edwards Jr. Exec. Board (Lobby Level)

Co-Chairs: Dr. Maida Greenberg

and Dr. Jonathan Kolb

FRIDAY, JUNE 16, 2006

10:00 A.M.-12:00 NOON

COPE WORKSHOP ON CLASSROOM TEACHING

..... Map Room (Terrace Level)

Chair: Dr. Gerald Melchiode

10:00 A.M.-12:00 NOON

WORKSHOP ON LOCAL HEALTH CARE INITIATIVES

..... Cabana Room #327 (Lobby Level)

Chair: Dr. Vivian Pender

10:00 A.M.-12:00 NOON

WORKSHOP ON PSYCHOTHERAPY TRAINING

..... Cabana Room #326 (Lobby Level)

Chairs: Dr. Alan Pollack

and Dr. Sally Rosenberg

12:00 NOON-1:30 P.M.

WORKSHOP ON PSYCHOANALYTIC PRACTICE

— CANCELLED

12:00 NOON-2:00 P.M.

WORKSHOP ON THE STUDY OF WOMEN AND PSYCHOANALYTIC TRAINING

..... Cabana Room #327 (Lobby Level)

Chairs: Dr. Nancy Kulish

and Dr. Joanne Callan

1:00 P.M.-3:00 P.M.

ETHICS WORKSHOP

..... Grant (Terrace Level)

Chair: Dr. Rion Hart

SATURDAY, JUNE 17, 2006

2:00 P.M.-4:00 P.M.

ORIENTATION FOR TRAINING FOR SOFAR PRO BONO PROGRAM

..... Caucus Room (Terrace Level)

Chair: Kenneth I. Reich, Ed.D.

CONTINUING PROFESSIONAL EDUCATION CREDIT

GREAT NEWS CONCERNING CE'S!

For those who wish to obtain continuing professional education credit, there will be no additional fee from the American Psychoanalytic Association; it is simply included with your registration fee. Please go to the Continuing Education Desk (Back Terrace; Terrace Level) during all hours that Registration is open (with the exception of during Evening Registration).

Once you sign-up, you will receive the following:

Attendance Record (printed in triplicate). Registration personnel will fill out your name and initial the form indicating that your fee has been received.

Educational Objectives and Evaluations Packet. You **MUST** turn in evaluations in order to receive verification of attendance. These will not be available at the individual scientific sessions.

You may have your attendance record validated at the Continuing Education Desk, Back Terrace (Terrace Level) or you may mail it to the National Office for verification following the meeting.

STATEMENT OF OBJECTIVES

The Scientific Meetings of The American Psychoanalytic Association are intended for the continuing education of the members and other registrants and include several individual teaching programs. A series of panels and special lectures presents new research in clinical and theoretical topics. Specific workshops ranging from single afternoons to 2-day workshops explore in detail the knowledge of a particular clinical or research area. Scientific papers are presented and discussed, each of which has been carefully reviewed by the Program Committee. A series of special seminars is presented to provide interdisciplinary education on topics of importance to psychoanalysis.

These activities are designed to present each registrant with the opportunity to review essential knowledge in the field and to update information in areas of vital concern to him/her.

CONTINUING PROFESSIONAL EDUCATION CREDITS

PSYCHOLOGISTS

The American Psychoanalytic Association is approved by the American Psychological Association to offer continuing education for psychologists. The American Psychoanalytic Association maintains responsibility for the program.

MCEP Credits for California Psychologists

The California Psychological Association Accrediting Agency accepts credits earned from American Psychological Association-approved sponsors (the American Psychoanalytic Association is an APA-approved sponsor). California-licensed psychologists are, however, required to directly report the courses they have taken with APA sponsors. For information about the MCEP Credit Reporting Form, go to the web site at www.calpsychlink.org then click on the Accrediting Agency button.

SOCIAL WORKERS

This course has been approved for Social Work CEUs by NASW – DC Metro Chapter. This approval is for Maryland, Virginia and Washington, DC. Social Workers from other states should check with their state licensing boards regarding acceptance.

PHYSICIANS

The American Psychoanalytic Association is accredited by the Accreditation Council for Continuing Medical Education to provide continuing medical education for physicians and takes full responsibility for the content, quality, and scientific integrity of this CME activity.

The American Psychoanalytic Association designates this educational activity for a maximum of 40 hours in category 1 credit toward the AMA Physician's Recognition Award. Each physician should claim only those credits that he/she actually spent in the activity.

Disclosure information is on record indicating that participating faculty members have no significant financial relationships to disclose.

GREAT NEWS CONCERNING CE'S!

For those who wish to obtain continuing professional education credit, there will be no additional fee from the American Psychoanalytic Association; it is simply included with your registration fee. Please go to the Continuing Education Desk (Back Terrace; Terrace Level) at the meeting for specifics about how to receive a Certificate of Attendance.

OF INTEREST TO CANDIDATES

WELCOME TO THE AMERICAN

Welcome to all Affiliate Members and Candidates to the Annual Meeting of the American. The programs listed below may be of particular interest to you. For those candidates coming to the meeting for the first time, I want to extend special greetings.

Please join your colleagues from around the country for the **Affiliate Council Meeting and Breakfast**.

Julio G. Calderon, M.D.
President, Affiliate Council

CANDIDATES!!

IS THIS YOUR FIRST APSAA MEETING?

Make contact with a PEER "HOST" who will WELCOME you and help ORIENT you to the meeting and to the Affiliate Council

Email Susan Flinders, Ph.D., sflphd@aol.com to request to be matched with a meeting "host."

AFFILIATE COUNCIL'S MENTORSHIP PROGRAM

Candidates can be assisted in making contact with senior analysts from around the country with whom they have common interests.

Email Susan Flinders, Ph.D., sflphd@aol.com, Chair of the Mentorship and Host Committee, for help in choosing a mentor, or speak to her at the meeting.

SENIOR ANALYST PRESENTATION PROGRAM*

Wednesday, June 14, 2006

..... 9:00 A.M.-12:00 NOON & 1:30 P.M.-4:00 P.M.
..... William H. Edwards Jr. Exec. Board (Lobby Level)
Limited to Candidates and Affiliate Members. A senior analyst presents process material illustrating his/her own analytic work.

DISCUSSION GROUP: IPSO: Magic Mirror On The Wall, Who Is The Baldest One Of All*

Wednesday, June 14, 2006 4:45 P.M.-7:15 P.M.
..... Jackson (Terrace Level)

BREAKFAST GATHERING FOR AFFILIATE MEMBERS AND CANDIDATES

Thursday, June 15, 2006 7:45 A.M.
..... Hemisphere Room (Concourse Level)
Join colleagues from around the country for breakfast. All are welcome to stay for the Affiliate Council.

AFFILIATE COUNCIL

Thursday, June 15, 2006 8:15 A.M.-12:30 P.M.
..... Hemisphere Room (Concourse Level)
Leadership Academy: Media Training Workshop with Kerry J. Sulkowicz, M.D., Chair of the Committee on Public Information and the Director of Public Affairs, Ms. Dottie Jeffries.

DUTCH TREAT LUNCH

..... 12:30 P.M.
Immediately following the Affiliate Council, please join us at a Dutch Treat Lunch. Please phone/email Susan Flinders, Ph.D., sflphd@aol.com for specific details. Please sign-up on the Bulletin Board near the Registration Desk.

COCAA/COCAP CHILD RECEPTION

Thursday, June 15, 2006 12:30 P.M.-2:00 P.M.
..... William H. Edwards Jr. Exec. Board (Lobby Level)
Dr. Phyllis Tyson and Kerry Kelly Novick, respective chairs of COCAA and COCAP, and their committee members are jointly hosting a coffee and cookie reception. All child analysts, child candidates, and people interested in working with children are cordially invited.

AFFILIATES' FORUM: Boundaries and Boundary Violations: Enticements to Enact in Both Patient and Analyst*

Thursday, June 15, 2006 2:00 PM.-4:30 P.M.
..... Georgetown Ballroom (Concourse Level)

CANDIDATE TO CANDIDATE DISCUSSION GROUP:

Inner and Outer Landscapes: Anxieties in Psychoanalytic Training*

Thursday, June 15, 2006 4:45 P.M.-7:15 P.M.
..... Edison (Terrace Level)

THE 2005 AFFILIATE COUNCIL SCIENTIFIC PAPER

PRIZE SEMI-FINALIST: The World of William Steig: A Creative Representation of Early Separation and Resiliency by Susan Scheftel, Ph.D.*

Friday, June 16, 2006 11:30 A.M.-1:30 P.M.
..... Thoroughbred Room (Concourse Level)

GERTRUDE AND ERNST TICHO MEMORIAL LECTURE RECEPTION

Friday, June 16, 2006 6:45 P.M.-8:30 P.M.
..... Gazebo (Poolside)
All are invited to attend this reception sponsored by the Ernst & Gertrude Ticho Charitable Foundation.

CANDIDATE DINNER PARTY

Friday, June 16, 2006 7:30 P.M.-10:00 P.M.
The candidates of the Baltimore Washington Center for Psychoanalysis, the Washington Psychoanalytic Center for Psychoanalysis, and the New York Freudian Society would like to warmly welcome all candidates visiting the Washington DC area for the Spring meetings. We would like to take this opportunity to invite you to a dinner party to be held in your honor. We plan on providing interesting conversation, a relaxed atmosphere, good food, wine, and coffee. The location of the dinner party is yet to be determined but we will make this information available as soon as possible. The cost to attend this dinner is \$40. Please contact Joanna Lhulier, 202.262.1483 or jlhulier@gwu.edu for more information. We look forward to seeing you!

OF INTEREST TO CANDIDATES

BREAKFAST WITH DISTINGUISHED ANALYST

Saturday, June 17, 2006 7:30 A.M.-8:45 A.M.
..... Adams (Terrace Level)

Come and join candidates from around the country in a discussion over breakfast with **Glen O. Gabbard, M.D.**

Glen O. Gabbard, M.D., is Brown Foundation Chair of Psychoanalysis and Professor of Psychiatry at Baylor College of Medicine in Houston, Texas, where he is also a training and supervising analyst at the Houston/Galveston Psychoanalytic Institute. He is Joint Editor-in-Chief of the "International Journal of Psychoanalysis".

He is also the chair of the Program Committee of the American Psychoanalytic Association. He has authored or edited 21 books, including *Love and Hate in the Analytic Setting*, *Boundaries and Boundary Violations in Psychoanalysis*, *Psychodynamic Psychiatry in Clinical Practice*, *The Psychology of the Sopranos*, and *Psychiatry and the Cinema*.

Cost is \$25.00. Please email or phone Susan Flinders, Ph.D. to make your reservation. Susan Flinders, Ph.D., sflphd@aol.com; (810) 444-2374 (cell). You may pay at the breakfast. Walk-ins are welcome.

RECEPTION FOR AFFILIATE MEMBERS, CANDIDATES, ASSOCIATES (EDUCATOR, PSYCHOTHERAPIST, RESEARCH AND STUDENT/RESIDENT), NEWCOMERS AND FELLOWS

Saturday, June 17, 2006. 5:15 P.M.-7:15 P.M.
..... Gazebo (Poolside)

Hosted by the Executive Committee of the Association, all are welcome to attend this reception.

**See Program for complete description of scientific sessions.*

THE 2006 \$1000 AFFILIATE COUNCIL SCIENTIFIC PAPER PRIZE

Supported by grants from the American Psychoanalytic Foundation and APsaA

The Affiliate Council awards this annual prize on the basis of peer review to the Affiliate Member who submits the most outstanding scientific paper on a psychoanalytic subject. A \$500 honorarium will be awarded to the semi-finalist.

The winning author will present his/her paper at the Winter 2007 Meeting of the American Psychoanalytic Association; the semi-finalist will present his/her paper at the 2007 Annual Meeting in June. The winners must also arrange to present their papers at a local society meeting or community venue. The winner and semi-finalist may submit their papers for review by JAPA and, if accepted, they will be published as the winner or semi-final paper of the Affiliate Council Paper Prize.

Submission Guidelines: Papers must be unpublished (but may have been presented at professional meetings) and must conform to the Preparation of Manuscript guidelines outlined by JAPA, with the exception that the length should not exceed 30 double-spaced typed pages.

Entries must be submitted electronically no later than August 1, 2006.

Email one Word document containing the manuscript with all references to the author deleted, and email another Word document containing the author's name, e-mail address, address, phone number, and Institute affiliation to:

Carol B. Levin, M.D.
Chair, Affiliate Council Paper Prize
517.381.0496
Email: levinc@msu.edu

CALLING ALL EDUCATORS, PSYCHOTHERAPISTS, RESEARCHERS, STUDENTS, RESIDENTS, AND NEWCOMERS!

You're cordially invited to
A Special Welcoming Reception
Wine and Cheese
5:15 PM- 7:15 PM, Saturday, June 21, 2006
Gazebo (Poolside)

hosted by APsaA's Officers
All are welcome.

Are you a newcomer to APsaA?

We welcome you!

and suggest you consider becoming involved as an Associate!

What are the Associates programs?

PSYCHOTHERAPIST ASSOCIATES

Who's eligible? Psychoanalytic psychotherapists with a minimum of a master's degree and who are licensed by the state in which they practice.

Need more information? For additional activities during the meeting, contact: Jane Warren, Ph.D., Chair, Committee on Psychotherapist Associates (734-662-5110; jmail@umich.edu) or Mae E. Kastor, MSW, Co-chair, (410-276-5815; maekastor@aol.com).

RESEARCH ASSOCIATES

Who's eligible? Research scientists, research-oriented clinicians, and others interested in psychoanalytically oriented research.

Need more information? For additional activities during the meeting, contact: Wilma S. Bucci, Ph.D., Chair, Committee on Research Associates (RAAPA) (631-421-2434; bucci@panther.adelphi.edu) or John H. Porcerelli, Ph.D., Co-chair (248-646-1267; jporcer@med.wayne.edu).

STUDENT/RESIDENT ASSOCIATES

Who's eligible? Medical students, psychiatric residents, psychology, social work and graduate students of all academic disciplines.

Need more information? For additional activities during the meeting, contact: Brenda Bauer, Psy.D., Co-chair, Committee on Student/Resident Associates (212) 838-4333, x224; bbe12@hotmail.com.

EDUCATOR ASSOCIATES

Who's eligible? Teachers and administrators at all levels of education, from pre-school through college, who are interested in the applications of psychoanalytic principles in classrooms and who are sponsored by an APsaA Member.

Need more information? For additional activities during the meeting, contact: Stephen D. Kerzner, M.D., Chair, Liaisons to Schools Committee (781-934-0600; svk50@earthlink.net) or Jonathan Cohen, Ph.D. Co-chair, (212-877-7328; jc273@columbia.edu).

How do I enroll?*

Enrollment Forms are available on line at:
www.apsa.org/organiz/associnfo.htm
and
at the display tables near the Registration Desk
and/or
call 212-752-0450, ext. 26 for further assistance.

*Auxiliary Activities for Associate enrollees often take place during the Meeting.
Be sure to check the Bulletin Board near the Registration Desk for Announcements.*

**Individuals who meet the qualifications for Affiliate and Active Membership in APsaA
are not eligible to join the Associates program.*

A GUIDE TO THE SCIENTIFIC PROGRAM AND MEETING REGISTRATION

The American Psychoanalytic Association’s Scientific Program features many different formats as described in this Guide. The entire scientific program is open to all registrants who enroll for the meeting.

There will be no on-site registration for sessions. The Program indicates all groups that have CLOSED due to maximum enrollment reached. Walk-ins, with the approval of the chairperson at the door, will be accepted on a space available basis.

The Guide below is divided by day and time into two headings: Sessions That Required Registration and Sessions Not Requiring Registration. Following this Guide is the Program, also chronological, which indicates by a shaded band those sessions that required sign-up.

SESSIONS THAT REQUIRED REGISTRATION

DISCUSSION GROUPS

Wednesday & Thursday 9:00 A.M.-11:30 A.M.
. 2:00 P.M.-4:30 P.M.
. 4:45 P.M.-7:15 P.M.
. & 7:30 P.M.-10:00 P.M.

Permits a small number of participants to interchange about a topic of mutual interest. Discussion Groups meet regularly at the Winter and Annual meetings, and this continuity offers the opportunity to build collaborations with colleagues nationally and internationally. New participants are welcome.

TWO-DAY CLINICAL WORKSHOPS:

Workshop Series in Process and Technique
 Psychotherapy Technique and Process

Wednesday & Thursday 4:45 P.M.-7:00 P.M.
 Demonstrates and explores the specific manner in which a distinguished psychoanalyst listens to clinical material and conceptualizes process and technique.

CHILD AND ADOLESCENT TWO-DAY CLINICAL WORKSHOP

Wednesday & Thursday 4:45 P.M.-7:00 P.M.
 A clinically-based teaching format in which a distinguished child and adolescent analyst uses analytic material to demonstrate how he/she listens and uses interventions in analytic work.

SPECIAL PROGRAMS FOR PSYCHIATRIC RESIDENTS, PSYCHOLOGY AND SOCIAL WORK STUDENTS

Thursday 4:45 P.M.-7:15 P.M.
Friday 2:00 P.M.-4:30 P.M.
Saturday & Sunday 9:00 A.M.-11:30 A.M.
 Four sessions directed to Psychiatric Residents, Psychology and Social Work Students but open to all registrants. The format is a lecture on a particular topic by the designated faculty member, followed by a case presentation by a participant in the APsaA Fellowship Program.

SPECIAL PROGRAM FOR MID-CAREER ANALYSTS

Friday 12:00 NOON-1:30 P.M.
 Have you ever wondered how to join an APsaA committee and, if you did, if you could find an audience for your ideas? Do you have half a dozen ideas for a paper or a work in progress that you want to present in a supportive environment? Do you need a place to discuss a case that feels too complicated or that doesn’t fit neatly into our psychoanalytic theories or conventions? Come to the regular meeting of the program for Mid-Career Analysts. This is a place to try out creative and innovative ideas. Please phone/email Zenobia Grusky, Ph.D. at (415) 824-8432, zgrusky@aol.com for specific details.

DISCUSSION OF PRE-CIRCULATED PAPERS

Friday 2:00 P.M.-5:00 P.M.
Saturday 9:00 A.M.-12:00 NOON
. 2:00 P.M.-5:00 P.M.
& Sunday 9:00 A.M.-12:00 NOON
 Selected by a juried review process, longer papers are the focus of a small group discussion among the author, a formal discussant, and the registrants. Admission to the discussion is limited to those who have read the paper in advance.

EXPLANATION OF FOOTNOTES

- * Invited Participant
- ** Note, this paper will not be read but will be discussed with the author by interested persons. Admission to the discussion is limited to those who have requested and received the paper in advance.

In the program, sessions highlighted with this shaded band required advance enrollment. However, walk-ins, with the approval of the chairperson at the door, will be accepted on a space available basis.

Please select another group for sessions in which enrollment is CLOSED.

A GUIDE TO THE SCIENTIFIC PROGRAM AND MEETING REGISTRATION

SESSIONS NOT REQUIRING REGISTRATION

RESEARCH SEMINAR

Wednesday 4:45 P.M.-7:15 P.M.
Fellows of the American Psychoanalytic Association will briefly present their current research studies in psychoanalytic psychotherapy, psychoanalysis, and applied psychoanalysis. Their research work and the difficulties and rewards of conducting this type of research will be discussed.

ORAL HISTORY WORKSHOP

Thursday 9:00 A.M.-12:30 P.M.
Explores the history of psychoanalysis through presentations by analysts and related professionals.

AFFILIATES' FORUM

Thursday 2:00 P.M.-4:30 P.M.
Devoted to the demonstration and exploration of innovative techniques in psychoanalytic education.

FILM PRESENTATION

Thursday 7:30 P.M.
Films that are related thematically through their psychoanalytic relevance are shown and interpreted by formal discussants and the audience. There is a related Discussion Group on Wednesday, 7:30 P.M.-10:00 P.M.

PLENARY PRESENTATION

Friday 9:45 A.M.
A major address by an outstanding psychoanalyst or other professional.

SYMPOSIA

Friday 12:00 NOON-1:30 P.M.
Saturday 12:00 NOON-1:30 P.M.
This format explores the interface between psychoanalysis, society and related disciplines. Many of the symposia attempt to demonstrate how psychoanalytic thinking can be applied to non-psychoanalytic settings.

PANELS

Friday 2:00 P.M.-5:00 P.M.
Saturday 9:00 A.M.-12:00 NOON
..... 2:00 P.M.-5:00 P.M.
& Sunday 9:00 A.M.-12:00 NOON
Panels bring together nationally recognized psychoanalysts to present papers on clinical and theoretical topics. Active interchange with the panelists is encouraged as panelists respond to questions from the audience.

PSYCHOANALYTIC DIALOGUE

Friday 2:00 P.M.-4:00 P.M.
A format presenting two different points of views on a controversial topic. This part of the program encourages debate and constructive dialogue on analytic issues of contemporary interest.

SCIENTIFIC PAPERS

Friday 2:00 P.M.-5:00 P.M.
Saturday 9:00 A.M.-12:00 NOON
..... 2:00 P.M.-5:00 P.M.
& Sunday 9:00 A.M.-12:00 NOON
Selected by a juried review process, papers are presented by the author and considered by a formal discussant. Time is also allotted for the audience to respond.

DISCUSSION WITH THE COMMITTEE ON SCIENTIFIC ACTIVITIES

Saturday 7:00 A.M.
Interested participants discuss the Use of Personal Computers for Psychoanalytic Studies.

UNIVERSITY FORUM

Saturday 9:00 A.M.-12:00 NOON
Features an academic scholar whose work already incorporates psychoanalysis or has the potential to foster collaborative projects. This academic will provide a "text" that will serve as the focus for discussion with a psychoanalyst.

MEET-THE-AUTHOR

Saturday 2:00 P.M.-5:00 P.M.
The author of a recent book of psychoanalytic interest discusses the work with other colleagues in a panel format.

SPECIAL EVENT FOR STUDENTS AND TRAINEES

Saturday 2:00 P.M.-4:30 P.M.
Directed to Graduate level students in all fields and trainees in the mental health fields. Psychoanalysts at different points in their career will discuss topics in an accessible manner for people who are new to psychoanalysis.

DAILY SCHEDULE

WEDNESDAY, JUNE 14, 2006

7:30 A.M.

Board on Professional Standards Coffee International Ballroom East (Concourse Level)

8:00 A.M.

Board on Professional Standards International Ballroom East (Concourse Level)

9:00 A.M.-11:30 A.M.

Discussion Groups #1-7 See individual listings in program

9:00 A.M.-12:00 NOON

Senior Analyst Presentation Program, Part 1 See individual listing in program

1:30 P.M.-4:00 P.M.

Senior Analyst Presentation Program, Part 2 See individual listing in program

2:00 P.M.-4:30 P.M.

Discussion Groups #8-16 See individual listings in program

4:45 P.M.-7:15 P.M.

Discussion Groups #17-25 See individual listings in program

4:45 P.M.-7:00 P.M.

Two-Day Clinical Workshop #1, Part 1:
WORKSHOP SERIES IN PROCESS AND TECHNIQUE: (Greenberg) See individual listing in program

4:45 P.M.-7:00 P.M.

Two-Day Clinical Workshop #2, Part 1:
WORKSHOP SERIES IN PROCESS AND TECHNIQUE: (Paniagua) See individual listing in program

4:45 P.M.-7:00 P.M.

Two-Day Clinical Workshop #3, Part 1:
PSYCHOTHERAPY TECHNIQUE AND PROCESS (Pollack): See individual listing in program

4:45 P.M.-7:00 P.M.

Child and Adolescent Two-Day Clinical Workshop, Part 1:
SEPARATION AND TERMINATION IN THE ANALYSIS OF
A BULIMIC ADOLESCENT GIRL (Chused): See individual listing in program

4:45 P.M.-7:15 P.M.

Research Seminar:
EMPIRICAL RESEARCH IN MENTAL HEALTH:
SPONSORED BY THE FELLOWSHIP COMMITTEE (Fisher) Monroe Ballroom East (Concourse Level)

5:30 P.M.-6:30 P.M.

APsaA Academy, Part I:
COMMUNICATING WITH CONGRESS: CHANGING
THE WORLD ONE CONGRESSMAN AT A TIME Lincoln Ballroom East (Concourse Level)
In this session, your Washington representative and several of your politically active colleagues will provide an update on federal legislative issues of importance to your practice as well as practical guidance with respect to how you can use your skills and experience in communicating with members of Congress.

7:15 P.M.

Reception to Welcome Gay and Lesbian Participants (ALL ARE WELCOME) Hemisphere Room (Concourse Level)

7:30 P.M.-10:00 P.M.

Discussion Groups #26-27 See individual listings in program

THURSDAY, JUNE 15, 2006

7:30 A.M.

Executive Council Coffee International Ballroom East (Concourse Level)

7:45 A.M.

Breakfast Gathering for Affiliate Members and Candidates Hemisphere Room (Concourse Level)

8:00 A.M.

Executive Council International Ballroom East (Concourse Level)

8:15 A.M.-12:30 P.M.

Affiliate Council Hemisphere Room (Concourse Level)

8:30 A.M.-10:00 A.M.

APsaA Academy, Part II:
THE CAPITOL FORUM BREAKFAST: THE RIGHT TO HEALTH
INFORMATION PRIVACY IN A HEALTHY INFORMATION TECHNOLOGY SYSTEM
..... LIMITED TO THOSE WHO HAVE PRE-REGISTERED. YOUR NAME MUST BE ON THE LIST
IN ORDER TO PARTICIPATE. THE BUS WILL DEPART AT 7:30 A.M. SHARP FROM THE "T"
STREET ENTRANCE, TERRACE LEVEL. A PHOTO I.D. IS REQUIRED TO ENTER THE CAPITOL.

DAILY SCHEDULE

THURSDAY, JUNE 15, 2006

(continued)

9:00 A.M.-12:30 P.M.

Oral History Workshop #63:

THE HISTORY OF PSYCHOANALYSIS

IN THE BALTIMORE-WASHINGTON AREA, PART II (Sklarew) Georgetown Ballroom (Concourse Level)

9:00 A.M.-11:30 A.M.

Discussion Groups #28-35 See individual listings in program

12:30 P.M.

Dutch Treat Lunch for Affiliate Members and Candidates Sign-up on the Bulletin Board Near the Registration Desk

12:30 P.M.-2:00 P.M.

COCAA/COCAP Child Reception William H. Edwards, Jr. Executive Boardroom (Lobby Level)

2:00 P.M.-4:30 P.M.

Affiliates' Forum:

BOUNDARIES AND BOUNDARY VIOLATIONS:

ENTICEMENTS TO ENACT IN BOTH PATIENT AND ANALYST (Gabbard) Georgetown Ballroom (Concourse Level)

2:00 P.M.-4:30 P.M.

Discussion Groups #36-49 (68) See individual listings in program

3:30 P.M.-7:30 P.M.

Discussion Group #50 See individual listing in program

4:45 P.M.-7:15 P.M.

Discussion Groups #51-61 See individual listings in program

4:45 P.M.-7:00 P.M.

Two-Day Clinical Workshop #1, Part 2:

WORKSHOP SERIES IN PROCESS AND TECHNIQUE See individual listing in program

4:45 P.M.-7:00 P.M.

Two-Day Clinical Workshop #2, Part 2:

WORKSHOP SERIES IN PROCESS AND TECHNIQUE See individual listing in program

4:45 P.M.-7:00 P.M.

Two-Day Clinical Workshop #3, Part 2:

PSYCHOTHERAPY TECHNIQUE AND PROCESS See individual listing in program

4:45 P.M.-7:00 P.M.

Child and Adolescent Two-Day Clinical Workshop, Part 2:

SEPARATION AND TERMINATION IN THE ANALYSIS

OF A BULIMIC ADOLESCENT GIRL See individual listing in program

4:45 P.M.-7:15 P.M.

Special Programs for Psychiatric Residents, Psychology, and Social Work Students #1:

FRIENDS OR FOES: COMBINING PSYCHODYNAMIC AND

COGNITIVE/BEHAVIORAL TREATMENTS (Wheelis) Military Room (Concourse Level)

5:30 P.M.

National Woman Psychoanalytic Scholar Program Benefit Check Bulletin Board for Information

FRIDAY, JANUARY 20, 2006

7:15 P.M.

Reception for Psychiatric Residents, Psychology, Social Work Students

and Student/Resident Associates (ALL ARE WELCOME) Thoroughbred Room (Concourse Level)

7:30 P.M.-10:00 P.M.

Discussion Groups #62-67 See individual listings in program

7:30 P.M.

Film Presentation:

PSYCHOANALYSIS AND FILM: MURDER FOR MURDER:

A SHORT FILM ABOUT KILLING—DECALOGUE V (Kieslowski, 1990) (Sklarew) Georgetown Ballroom (Concourse Level)

7:30 A.M.

MEMBERS' COFFEE Lincoln Ballroom (Concourse Level)

8:00 A.M.-9:30 A.M.

BUSINESS MEETING OF MEMBERS (Meyer) Lincoln Ballroom (Concourse Level)

9:45 A.M.-11:15 A.M.

Plenary Presentation:

HAMLET AND PSYCHOANALYTIC EXPERIENCE (Schwaber) Lincoln Ballroom (Concourse Level)

Frenkel & Co., Inc.

Serving the
professional liability
insurance needs of the
American
Psychoanalytic
Association since 1972

For information please contact:

Margaret Church,
Program Administrator

1-201-356-3422

mchurch@frenkel.com

DAILY SCHEDULE

FRIDAY, JANUARY 20, 2006

(continued)

11:15 A.M.-11:30 A.M.

The Debut of APsaA's New Website (Canty/Jeffries/Stein) Lincoln Ballroom (Concourse Level)
During this brief audiovisual presentation, APsaA staff will present an overview of the new site, highlighting the expanded online services for members.

11:30 A.M.-1:30 P.M.

The 2005 Affiliate Council Scientific Paper Prize Semi-Finalist:
THE WORLD OF WILLIAM STEIG: A CREATIVE REPRESENTATION
OF EARLY SEPARATION AND RESILIENCY (Scheffel) Thoroughbred Room (Concourse Level)

12:00 NOON-1:30 P.M.

Symposium I:
OUT OF THE TOWER AND INTO THE COMMUNITY:
PSYCHOANALYSTS MEET THE STREETS (Greenspan/Hatton/Tanenbaum) Jefferson Ballroom West (Concourse Level)

12:00 NOON-1:30 P.M.

Symposium II:
HELPING FAMILIES DEAL WITH TRAUMATIC BEREAVEMENT
AT THE DISTRICT OF COLUMBIA MORGUE (Sklarew) Hemisphere Room (Concourse Level)

12:00 NOON-1:30 P.M.

SPECIAL PROGRAM FOR MID-CAREER ANALYSTS (Grusky) Military Room (Concourse Level)

12:00 NOON-1:30 P.M.

Program with Journalists and Psychoanalysts:
THE DISPOSABLE AMERICAN: JOB LAYOFFS
AND THEIR CONSEQUENCES (Uchitelle) Jefferson Ballroom East (Concourse Level)

2:00 P.M.-4:30 P.M.

Special Programs for Psychiatric Residents, Psychology, and Social Work Students #2:
SPIRITUALITY AND THE ROLE OF RELIGION IN TREATMENT (Safran) Military Room (Concourse Level)

2:00 P.M.-5:00 P.M.

Panel I:
CURRENT VIEWS OF THE OEDIPAL COMPLEX (Poland) Lincoln Ballroom (Concourse Level)

2:00 P.M.-4:00 P.M.

Psychoanalytic Dialogue:
RED, BLUE AND YOU: THE ANALYST IN A SOCIAL CONTEXT, Part 2 (Cairo) Jefferson Ballroom East (Concourse Level)

2:00 P.M.-5:00 P.M.

Scientific Papers – Section I (Levine; Summers) Jefferson Ballroom West (Concourse Level)

2:00 P.M.-5:00 P.M.

Discussion of Pre-Circulated Paper A (Hoffman) Hemisphere Room (Concourse Level)

5:15 P.M.-6:45 P.M.

Inaugural Gertrude and Ernst Ticho Memorial Lecture:
THE SECOND PERSON (Litowitz) Lincoln Ballroom (Concourse Level)
This lectureship has been created by the Gertrude and Ernst Ticho Charitable Foundation to recognize and honor promising early to mid-career analysts.

6:45 P.M.-8:30 P.M.

Gertrude and Ernst Ticho Memorial Lecture Reception (ALL ARE WELCOME) Gazebo (Poolside)

7:30 P.M.-10:00 P.M.

Candidate Dinner Party Please contact Joanna Lhulier, 202-262-1483, jlhulier@gwu.edu for more information.

SATURDAY, JUNE 17, 2006

7:00 A.M.-9:00 A.M.

Discussion with the Committee on Scientific Activities:
THE USE OF PERSONAL COMPUTERS FOR
PSYCHOANALYTIC STUDIES (Mosher/Brauer) Jefferson Ballroom East (Concourse Level)

7:30 A.M.-8:45 A.M.

Breakfast with Distinguished Analyst SEE OF INTEREST TO CANDIDATES

9:00 A.M.-11:30 A.M.

Special Programs for Psychiatric Residents, Psychology, and Social Work Students #3:
WHEN IT'S MORE THAN TWO: PSYCHODYNAMIC
REFLECTIONS ON GROUP THERAPY (Wepman) Military Room (Concourse Level)

9:00 A.M.-12:00 NOON

Panel II:
PLURALISM IN ACTION (Cooper) Lincoln Ballroom (Concourse Level)

DAILY SCHEDULE

SATURDAY, JUNE 17, 2006

(continued)

9:00 A.M.-12:00 NOON

Child and Adolescent Panel:

PLAY IN THE PSYCHOANALYTIC SITUATION (Gilmore) Monroe Ballroom (Concourse Level)

9:00 A.M.-12:00 NOON

University Forum:

IMPLICIT ASSOCIATIONS: RACE IN POLITICS

AND CLINICAL PRACTICE (Hamer) Jefferson Ballroom West (Concourse Level)

9:00 A.M.-12:00 NOON

Scientific Papers – Section II (Crastrnopol; Jones-Quinn) Thoroughbred Room (Concourse Level)

12:00 NOON-1:30 P.M.

Symposium III:

EDUCATORS AND PSYCHOANALYSTS: WORKING TOGETHER IN A
SCHOOL-BASED MENTAL HEALTH PROGRAM: A CRITICAL PARTNERSHIP:

SPONSORED BY THE LIAISON TO SCHOOLS COMMITTEE (Kerzner/Sklarew) Jefferson Ballroom East (Concourse Level)

12:00 NOON-1:30 P.M.

Encore Symposium:

THE PSYCHODYNAMIC DIAGNOSTIC MANUAL (PDM) (Greenspan) Lincoln Ballroom (Concourse Level)
This symposium will introduce the new *Psychodynamic Diagnostic Manual* which is based on current neuroscience and treatment outcome studies that demonstrate the importance of focusing on the full range and depth of emotional and social functioning.

2:00 P.M.-5:00 P.M.

Panel III:

CLOSE PROCESS ATTENTION:

CLINICAL ADVANTAGES AND DISADVANTAGES (Smith) Lincoln Ballroom (Concourse Level)

2:00 P.M.-5:00 P.M.

Meet-the-Author:

THE HEALER'S BENT: SOLITUDE AND DIALOGUE

IN THE CLINICAL ENCOUNTER, by James T. McLaughlin, M.D. (Schwaber) Monroe Ballroom (Concourse Level)

2:00 P.M.-4:30 P.M.

Special Event for Students and Trainees:

A WAY OF LISTENING: CASE CONCEPTUALIZATION AND TREATMENT
PLANNING IN THE INITIAL SESSIONS: CO-SPONSORED BY THE COMMITTEE
ON STUDENT ASSOCIATES AND THE FORMER FELLOWS OF THE AMERICAN
PSYCHOANALYTIC ASSOCIATION (Bauer/Bram) Military Room (Concourse Level)

2:00 P.M.-5:00 P.M.

Scientific Papers – Section III (Lichtenberg; Park/Auchincloss) Thoroughbred Room (Concourse Level)

2:00 P.M.- 5:00 P.M.

Discussion of Pre-Circulated Paper B (Waugaman) Hemisphere Room (Concourse Level)

2:00 P.M.-4:00 P.M.

ORIENTATION FOR TRAINING FOR SOFAR PRO BONO PROGRAM Caucus Room (Terrace Level)

5:15 P.M.-7:15 P.M.

Reception for Affiliate Members, Candidates, Associates (Educator, Psychotherapist,

Research and Student/Resident), Newcomers and Fellows Gazebo (Poolside)

SUNDAY, JUNE 18, 2006

9:00 A.M.-12:00 NOON

Panel IV:

TEACHER AS ANALYST/ANALYST AS TEACHER: A CONFUSION

OF TONGUES IN THE ANALYTIC CLASSROOM? (Phillips) Monroe Ballroom (Concourse Level)

9:00 A.M.-11:30 A.M.

Special Programs for Psychiatric Residents, Psychology, and Social Work Students #4:

CREATING THE FRAME IN CHILD THERAPY (Dugan) Military Room (Concourse Level)

9:00 A.M.-12:00 NOON

Scientific Papers – Section IV (Good; Lichtenberg) Lincoln Ballroom East (Concourse Level)

SCIENTIFIC PROGRAM

GLEN O. GABBARD, M.D., CHAIR, PROGRAM COMMITTEE

WEDNESDAY, JUNE 14, 2006

9:00 A.M.-11:30 A.M.

Discussion Groups

- 1 MULTI-DETERMINATION IN DREAM INTERPRETATION: A DREAM AND EXCERPTS OF THE ANALYTIC EXPLORATION**
..... Thoroughbred Room (Concourse Level)
Co-chairs &
Presenters: Harmon Biddle, M.S.W.*
Molly M. Jones-Quinn, Ph.D.
- 2 SHAKESPEARE'S MOTHERS**
..... Adams (Terrace Level)
Chair: Jerome M. Grunes, M.D.
Presenter: Dorothy T. Grunes, M.D.
- 3 THE PSYCHODYNAMICS OF SPIRITUALITY**
..... Hemisphere Room (Concourse Level)
Chair &
Coordinator: Paula J. Hamm, M.A., L.P.C.
Co-chair: Mortimer Ostow, M.D.
Presenter: Andreas K. Kraebber, M.D.
- 4 PARENT-INFANT PROGRAMS AT PSYCHOANALYTIC INSTITUTES: PARENT-INFANT GROUPS TO FACILITATE ATTACHMENT IN CHILDREN ADOPTED AFTER FIVE MONTHS**
..... Edison (Terrace Level)
Co-chairs: Leon Hoffman, M.D.
Ilene Sackler Lefcourt*
William M. Singletary, M.D.
Presenters: Elaine Frank, M.S.W.*
Denise Rowe, B.A.*
- 5 PSYCHOLOGICAL TESTING AND PSYCHOANALYSIS: COLLABORATION AND TREATMENT PLANNING IN WORKING WITH ADULTS**
..... Farragut (Terrace Level)
Chair: Mary Jo Peebles-Kleiger, Ph.D.
Co-chair: Richard M. Waugaman, M.D.
Presenter: Anthony D. Bram, Ph.D.
- 6 PSYCHOANALYTIC FAMILY THERAPY**
..... Grant (Terrace Level)
Co-chairs: David E. Scharff, M.D.
Richard M. Zeitner, Ph.D.
- 7 ELECTIVE RETIREMENT – WHY? WHEN? HOW? WHETHER?**
..... Independence (Terrace Level)
Chair: Moisy Shopper, M.D.

9:00 A.M.-12:00 NOON

Senior Analyst Presentation Program, Part 1

- William H. Edwards, Jr. Exec. Board (Lobby Level)
Chair: David V. Orbison, Ph.D.
Presenter: Robert S. White, M.D.

1:30 P.M.-4:00 P.M.

Senior Analyst Presentation Program, Part 2

- William H. Edwards, Jr. Exec. Board (Lobby Level)

2:00 P.M.-4:30 P.M.

Discussion Groups

- 8 CLINICAL APPLICATIONS OF THE IDEAS OF SOME CONTEMPORARY FRENCH PSYCHOANALYSTS: ANDRÉ GREEN**
..... Lincoln Ballroom West (Concourse Level)
Chair: Francis D. Baudry, M.D.
Co-chair: Gail S. Reed, Ph.D.
Presenter: Jessica Brown, M.D.
Coordinator: Christine Anzieu-Premmeureur, M.D., Ph.D.
- 9 PSYCHOANALYTIC TREATMENT OF PATIENTS WHO HAVE BEEN ADOPTED**
..... Jefferson Ballroom East (Concourse Level)
Co-chairs: Paul M. Brinich, Ph.D.
Maida J. Greenberg, Ed.D.
Presenter: Maxine F. Gann, Ph.D.
Coordinator: Kenneth M. Gruenberg, M.D.
- 10 PSYCHOANALYTIC AND PSYCHOSOCIAL ASPECTS OF FEMALE DEVELOPMENT – CANCELLED**
- 11 CONVERSATIONS WITH DOCTORS: THE PROCESS OF BALINT GROUPS**
..... Grant (Terrace Level)
Co-chair &
Coordinator: Fred L. Griffin, M.D.
Co-chair &
Presenter: Randall H. Paulsen, M.D.
- 12 RESISTANCE: A NEW THEORETICAL PERSPECTIVE**
..... Jefferson Ballroom West (Concourse Level)
Chair,
Presenter &
Coordinator: Alexandra M. Harrison, M.D.
Co-chair: Gisele Danon-Apter, M.D.*
- 13 LOVE IN THE PSYCHOANALYTIC SITUATION**
..... Lincoln Ballroom East (Concourse Level)
Co-chair,
Presenter &
Coordinator: Fonya Lord Helm, Ph.D., A.B.P.P.
Co-chairs &
Presenters: Maurine Kelber Kelly, Ph.D., C.P.A., F.I.P.A.*
E. Lisa Pomeroy, Ph.D.*
- 15 POSTMODERN FEMINISM: DECONSTRUCTION OF THE STATUS OF WOMEN**
..... Cabinet Room (Concourse Level)
Chair: Vivian Blotnick Pender, M.D.
Discussant: Jane Flax, Ph.D.*
- 16 SUPEREGO REVISITED: JUNG AND THE CONSCIENCE**
..... Adams (Terrace Level)
Chair &
Presenter: Leon Wurmser, M.D.
Co-chair: Dr. Heidrun Jarass*
Presenter: Anita von Raffay, Ph.D.

SCIENTIFIC PROGRAM

WEDNESDAY, JUNE 14, 2006

4:45 P.M.-7:15 P.M.

Discussion Groups

- 17 CHILD ANALYTIC PROCESS: TRAUMA AND NEUROSIS IN A LATE ADOLESCENT GIRL**
..... Monroe Ballroom West (Concourse Level)
Co-chairs: Roy N. Aruffo, M.D.
Samuel E. Rubin, M.D.
Presenter: Edward I. Kohn, M.D.
Coordinator: Lee I. Ascherman, M.D.
- 18 WRITING FOR CERTIFICATION: DISCUSSION WITH MEMBERS OF THE CERTIFICATION EXAMINATION COMMITTEE**
..... Cabinet Room (Concourse Level)
Chair: E. Kirsten Dahl, Ph.D.
Presenters: Sybil A. Ginsburg, M.D.
Paul C. Holinger, M.D.
- 19 NEW PERSPECTIVES ON HOMOSEXUALITY: GAY FATHER, GAY HUSBAND, GAY ANALYST: WORKING THE COUNTERTRANSFERENCE**
..... Military Room (Concourse Level)
Chair: Ethan M. Grumbach, L.C.S.W.
Presenter: Jeffrey L. Longhofer, Ph.D., L.I.S.W.
Discussant: Ralph E. Roughton, M.D.
Coordinator: Daniel E. Fast, M.D.
- 20 PSYCHOANALYSIS AND THE LAW: THE POWER OF PSYCHOANALYTIC FORENSIC TESTIMONY**
..... Edison (Terrace Level)
Co-chair &
Coordinator: Linda Gunsberg, Ph.D.
Co-chair: Moisy Shopper, M.D.
Presenter: Gilbert W. Kliman, M.D.
- 21 APPLICATIONS OF PSYCHOANALYSIS TO SPORTS: THE ATHLETE'S DREAMS**
..... Farragut (Terrace Level)
Chair: James H. Hansell, Ph.D.
Co-chair &
Coordinator: S. Richard Roskos, M.D.
Presenter: Howard M. Katz, M.D.
- 22 SHAME DYNAMICS**
..... Grant (Terrace Level)
Chair: Benjamin Kilborne, Ph.D.
Co-chair: Andrew P. Morrison, M.D.
Co-chairs &
Coordinators: Melvin R. Lansky, M.D.
Leon Wurmser, M.D.
- 23 CONTEMPORARY PSYCHOANALYTIC IDEAS ON MASOCHISM — CANCELLED**
- 25 IPSO: MAGIC MIRROR ON THE WALL, WHO IS THE BALDEST ONE OF ALL**
..... Jackson (Terrace Level)
Chair: John Skulstad, M.D.

4:45 P.M.-7:00 P.M.

Two-Day Clinical Workshop #1, Part 1:

WORKSHOP SERIES IN PROCESS AND TECHNIQUE

..... Jefferson Ballroom West (Concourse Level)

Chair: Jay Greenberg, Ph.D.

Presenter: Susan S. Levine, M.S.S., L.C.S.W.

Series

Coordinator: Irene Cairo, M.D.

4:45 P.M.-7:00 P.M.

Two-Day Clinical Workshop #2, Part 1:

WORKSHOP SERIES IN PROCESS AND TECHNIQUE

..... Jefferson Ballroom East (Concourse Level)

Chair: Cecilio Paniagua, M.D.

Presenter: Alexandra M. Harrison, M.D.

Series

Coordinator: Henry F. Smith, M.D.

4:45 P.M.-7:00 P.M.

Two-Day Clinical Workshop #3, Part 1:

PSYCHOTHERAPY TECHNIQUE AND PROCESS

..... Lincoln Ballroom West (Concourse Level)

Chair: Alan Pollack, M.D.

Presenter: Lizbeth Moses, Ph.D.

Discussant: Robert Michels, M.D.

4:45 P.M.-7:00 P.M.

Child and Adolescent Two-Day Clinical Workshop, Part 1:

SEPARATION AND TERMINATION IN THE ANALYSIS OF A BULIMIC ADOLESCENT GIRL

..... Adams (Terrace Level)

Chair: Judith Fingert Chused, M.D.

Presenter: Rachel Seidel, M.D.

4:45 P.M.-7:15 P.M.

Research Seminar: **EMPIRICAL RESEARCH IN MENTAL HEALTH:** Sponsored by the Fellowship Committee

..... Monroe Ballroom East (Concourse Level)

Chair: Charles P. Fisher, M.D.

Presenter: Mark Davila, M.S.W.*

Discussant: Cary D. Friedman, M.D.

5:30 P.M.-6:30 P.M.

APsaA Academy, Part I: **COMMUNICATING WITH CONGRESS: CHANGING THE WORLD ONE CONGRESSMAN AT A TIME**

..... Lincoln Ballroom East (Concourse Level)

Chair: Jim Pyles*

7:30 P.M.-10:00 P.M.

Discussion Groups

26 SUPERVISING PSYCHOANALYTIC PSYCHOTHERAPY: A UNIQUE EXPERIENCE, A UNIQUE SKILL

..... Jefferson Ballroom East (Concourse Level)

Co-chair: Fred L. Griffin, M.D.

Co-chair &

Coordinator: Jane S. Hall, L.C.S.W., F.I.P.A.

Presenters: Catherine Anderson, Ph.D.

Molly M. Jones-Quinn, Ph.D.

SCIENTIFIC PROGRAM

WEDNESDAY, JUNE 14, 2006

7:30 P.M.-10:00 P.M.

Discussion Groups

27 THE METHODOLOGY OF PSYCHOANALYTIC FILM CRITICISM

..... Jefferson Ballroom West (Concourse Level)

Chair: Bruce H. Sklarew, M.D.

Presenter: Glen O. Gabbard, M.D.

THURSDAY, JUNE 15, 2006

8:30 A.M.-10:00 A.M.

APsaA Academy, Part II:

THE CAPITOL FORUM BREAKFAST: THE RIGHT TO HEALTH INFORMATION PRIVACY IN A HEALTHY INFORMATION TECHNOLOGY SYSTEM, CO-SPONSORED WITH THE NASW:

This section of the APsaA Academy will be held at the U.S. Capitol with key legislators such as Congresswoman Nancy Johnson, Congressman Ed Markey, and Congressman Patrick Kennedy (invited).

LIMITED TO THOSE WHO HAVE PRE-REGISTERED. YOUR NAME MUST BE ON THE LIST IN ORDER TO PARTICIPATE. THE BUS WILL DEPART AT 7:30 A.M. SHARP FROM THE "T" STREET ENTRANCE, TERRACE LEVEL. A PHOTO I.D. IS REQUIRED TO ENTER THE CAPITOL.

9:00 A.M.-12:30 P.M.

Oral History Workshop #63: THE HISTORY OF PSYCHOANALYSIS IN THE BALTIMORE-WASHINGTON AREA, PART II

..... Georgetown Ballroom (Concourse Level)

Chair: Bruce H. Sklarew, M.D.

Co-chair &

Presenter: William L. Granatir, M.D.

Presenters: Raymond I. Band, M.D.

Harriet I. Basseches, Ph.D.*

Donald L. Burnham, M.D.

(by videotape)

Robert A. Cohen, M.D.

(by audiotape)

Joseph D. Lichtenberg, M.D.

Charles Savage, M.D.

Barbara Young, M.D.

9:00 A.M.-11:30 A.M.

Discussion Groups

28 THERAPEUTIC ACTION OF PSYCHOANALYTICALLY INFORMED WORK WITH CHILDREN IN A SCHOOL SETTING: PARALLEL CASE MATERIAL FROM TEACHER, ANALYST, AND DIRECTOR

..... Military Room (Concourse Level)

Co-chairs: Roy N. Aruffo, M.D.

Phyllis J. Cath, M.D.

Presenters: Anne Jaegerman, M.S.*

Amberlyn Mathis-O'Melia, M.A.*

Aimee Nover, Ph.D.

Justine Kalas Reeves, Psy.D.*

9:00 A.M.-11:30 A.M.

Discussion Groups

29 THE INFLUENCE OF THE CONTEMPORARY BRITISH KLEINIANS ON CLINICAL PSYCHOANALYSIS: A CASE IN PROCESS

..... Jefferson Ballroom West (Concourse Level)

Co-chairs: Abbot A. Bronstein, Ph.D.

Katherine MacVicar, M.D.

30 MYTHS AND CHILDREN'S STORIES: STAR WARS — HATING, LOVING AND TRANSFORMATION IN PSYCHOANALYSIS

..... Adams (Terrace Level)

Chair: Daniel M. A. Freeman, M.D.

31 DEEPENING THE WORK: MOVING FROM ONCE TO TWICE WEEKLY PSYCHOTHERAPY: SPONSORED BY THE PSYCHOTHERAPIST ASSOCIATES

..... State Room (Terrace Level)

Chair: Mae Kastor, M.S.W.*

Co-chair: Jane Warren, Ph.D.*

Presenter: Elizabeth A. Miller, M.S.W.*

Discussant: Nancy McWilliams, Ph.D.*

Coordinator: Marcia Polansky, M.S.W., Sc.D.*

32 HAROLD PINTER'S "THE HOMECOMING": WIFE-MOTHER-WHORE?

..... Jefferson Ballroom East (Concourse Level)

Co-chair &

Coordinator: Eva F. Lichtenberg, Ph.D.

Co-chair: Arnold D. Tobin, M.D.

33 ON SETTLING THE SCORE: CRIME, PUNISHMENT, AND THE DEATH PENALTY

..... Chevy Chase (Terrace Level)

Chair: Donald B. Moss, M.D.

Co-chair: Rogelio A. Sosnik, M.D.

Presenter: Robert Horan, Atty.*

34 INTERPRETATION, PROCESS AND TECHNIQUE IN THE USE OF PLAY IN THE ANALYSIS OF PRE-OEDIPAL CHILDREN

..... Lincoln Ballroom West (Concourse Level)

Chair &

Coordinator: Susan P. Sherkow, M.D.

Co-chair &

Presenter: Alexandra M. Harrison, M.D.

35 THE TERMINATION PHASE OF ANALYSIS

..... Thoroughbred Room (Concourse Level)

Chair: Mayer Subrin, M.D.

Co-chair: David R. Dietrich, Ph.D.

Presenter: Mark E. Ziegler, Ph.D.

2:00 P.M.-4:30 P.M.

Discussion Groups

36 DISRUPTIONS, DILEMMAS, AND DIFFICULT DECISIONS: ANALYTIC THEORY AND TECHNIQUE

..... Jefferson Ballroom West (Concourse Level)

Chair: Salman Akhtar, M.D.

Co-chair: Axel Hoffer, M.D.

SCIENTIFIC PROGRAM

THURSDAY, JUNE 15, 2006

2:00 P.M.-4:30 P.M.

Discussion Groups

- 37 ANALYTIC CONVICTION AND ANALYTIC PLURALISM: STRIKING A BALANCE BETWEEN ORTHODOXY AND CREATIVITY**
..... Jefferson Ballroom East (Concourse Level)
Chair: Richard Almond, M.D.
Co-chair &
Coordinator: Zenobia Grusky, Ph.D.
Co-chair: John Zinner, M.D.
Presenter: John M. Hayes, Ph.D.
- 38 THE RECOMMENDATION FOR CHILD ANALYSIS: THE PARENTS' RESISTANCE**
..... Military Room (Concourse Level)
Chair: Silvia M.V. Bell, Ph.D.
- 39 A CLASSIC UNVISITED: THE CLINICAL VALUE OF THE IDEAS OF WILFRED BION**
..... Thoroughbred Room (Concourse Level)
Co-chairs: Irene Cairo, M.D.
Rogelio A. Sosnik, M.D.
Presenter: Jean Goodwin, M.D., M.P.
Coordinator: Louis W. Weisberg, M.D.
- 40 IMPASSES AND "FAILED" ANALYSIS**
..... Dupont (Terrace Level)
Co-chairs: Steven H. Goldberg, M.D.
Judy L. Kantrowitz, Ph.D.
- 41 SADO/MASOCHISM IN THE TRANSFERENCE AND COUNTERTRANSFERENCE**
..... Adams (Terrace Level)
Chair &
Presenter: Nancy R. Goodman, Ph.D.
Presenters: Harriet I. Basseches, Ph.D.*
Susan S. Elmendorf, M.S.W.*
Presenter &
Coordinator: Paula Ellman, Ph.D.*
- 42 PROMOTING SOCIAL AND EMOTIONAL HEALTH AND LEARNING: LOSS, LONGING AND LEARNING IN IMMIGRANT CHILDREN: PSYCHOANALYSTS COLLABORATE WITH K-12 TEACHERS**
..... Chevy Chase (Terrace Level)
Chair: Stephen D. Kerzner, M.D.
Co-chair: Daniel B. Frank, Ph.D.
Presenter: Judy L. Madden, Ed.D.*
- 43 CLINICAL CHALLENGES TO BEGINNING AN ANALYTIC CASE — CANCELLED**
- 44 PSYCHOANALYSIS AND THE HUMANITIES AND SOCIAL SCIENCES: THE CORST CONTRIBUTION**
..... State Room (Terrace Level)
Chair &
Coordinator: Melvin R. Lansky, M.D.
Co-chair &
Coordinator: Bonnie E. Litowitz, Ph.D.
Presenter: Sidney J. Blatt, Ph.D.

2:00 P.M.-4:30 P.M.

Discussion Groups

- 45 TERMINATION AND THE INTERMINABLE TREATMENT**
..... Edison (Terrace Level)
Co-chair &
Coordinator: Jeffrey D. Nason, M.D.
Co-chair: Bonnie Smolen, Ed.D.*
Presenter: Roberta J. Apfel, M.D., M.P.H.
Discussant: Warren S. Poland, M.D.
- 46 ANALYTIC LISTENING: REFLECTIONS ON HYPOTHESIS AND EVIDENCE**
..... Lincoln Ballroom West (Concourse Level)
Chair: Evelyne Albrecht Schwaber, M.D.
Co-chair: Ralph Beaumont, M.D.
- 47 PSYCHOANALYTIC ASPECTS OF ARTIFICIAL REPRODUCTIVE TECHNOLOGY**
..... Farragut (Terrace Level)
Chair: Miriam Tasini, M.D.
Co-chair: Judith M. Chertoff, M.D.
- 48 PROBLEMS AND SOLUTIONS IN EVALUATING THE RESULTS OF PSYCHOANALYSIS**
..... Grant (Terrace Level)
Chair: Sherwood Waldron, Jr., M.D.
- 49 PSYCHOANALYTIC TREATMENT OF EATING DISORDERS AND BODY IMAGE CONCERNS ACROSS THE LIFE CYCLE**
..... Independence (Terrace Level)
Chair: Kathryn J. Zerbe, M.D.
Presenter: John R. Whipple, M.D.
- 68 PSYCHOANALYTIC APPROACHES TO THE SERIOUSLY DISTURBED PATIENT: PLEASE NOTE, THIS GROUP HAS BEEN ADDED. IT WAS NOT INCLUDED IN THE PRELIMINARY PROGRAM. ALL ARE WELCOME TO WALK-IN.**
..... Kalorama (Terrace Level)
Chair: Richard L. Munich, M.D.
Co-chair: Eric R. Marcus, M.D.
Presenter: Donald Ross, M.D.

2:00 P.M.-4:30 P.M.

Affiliates' Forum: **BOUNDARIES AND BOUNDARY VIOLATIONS: ENTICEMENTS TO ENACT IN BOTH PATIENT AND ANALYST**

- Georgetown Ballroom (Concourse Level)
Chair &
Presenter: Beverly H. Betz, M.S.W., M.Ed.
Discussant: Glen O. Gabbard, M.D.

SCIENTIFIC PROGRAM

THURSDAY, JUNE 15, 2006

3:30 P.M.-7:30 P.M.

Discussion Group

Please note: This Time Slot is for One Discussion Group Only.

- 50 VULNERABLE CHILD: THE SENSE OF SELF/LATE PRE-OEDIPAL: PART II**
..... Hemisphere Room (Concourse Level)
Chair: Theodore B. Cohen, M.D.
Co-chair,
Presenter &
Coordinator: M. Hossein Etezady, M.D.
Presenters: Mary Davis, M.D.
Bertram A. Ruttenberg, M.D.
Discussant: Joseph D. Lichtenberg, M.D.

4:45 P.M.-7:15 P.M.

Discussion Groups

- 51 INFANT MENTAL LIFE AND THE DREAM IN PSYCHOANALYSIS: THE INFANTILE ORIGINS OF SEVERE PSYCHOPATHOLOGY**
..... Cabana Room # 327 (Lobby Level)
Chair: Bernard W. Bail, M.D.
Co-chairs: Lynda Share, Ph.D.
Susan L. Williams, Ph.D.
Presenter: Judith Parker, Ph.D.*
- 52 TORTURE, TERRORISM AND THE ETHICS OF INTERROGATION**
..... Hamilton (Terrace Level)
Chair: Stephen H. Behnke, Ph.D.
Co-chair: Ernest Wallwork, Ph.D.
- 53 WRITING ABOUT YOUR ANALYTIC WORK IN A CASE REPORT (SPONSORED BY THE BOARD ON PROFESSIONAL STANDARDS)**
..... Dupont (Terrace Level)
Chair: Stephen B. Bernstein, M.D.
Co-chairs: Ellen G. Blumenthal, M.D.
Melvin Bornstein, M.D.
Jonathan Palmer, M.D.
Arthur L. Rosenbaum, M.D.
Peggy E. Warren, M.D.
Presenter: Carol W. Coutu, Ph.D.
- 54 CANDIDATE TO CANDIDATE: INNER AND OUTER LANDSCAPES: ANXIETIES IN PSYCHOANALYTIC TRAINING**
..... Edison (Terrace Level)
Chair: Beverly H. Betz, M.S.W., M.Ed
Presenters: Angelica Kaner, Ph.D.
Joanna Lhulier, Psy.D.*
- 55 ADVOCACY FOR PSYCHOANALYSIS: TENTH ANNIVERSARY OF THE JAFFE V. REDMOND DECISION: FEDERAL PSYCHOTHERAPIST PATIENT PRIVILEGE (SPONSORED BY THE JOINT COMMITTEE ON CONFIDENTIALITY)**
..... Farragut (Terrace Level)
Co-chairs: Norman A. Clemens, M.D.
Paul W. Mosher, M.D.
Presenters: Elizabeth K. Hersh, M.D.
Barry J. Landau, M.D.
Coordinator: Arthur J. Farley, M.D.

4:45 P.M.-7:15 P.M.

Discussion Groups

- 56 AN EVIDENCE-BASED ASSESSMENT GUIDELINE?**
..... Cabana Room # 326 (Lobby Level)#
Chair: Sheila Hafter Gray, M.D.
Presenter: Jeffrey Meyer, M.D.
- 57 TRAUMA IN THE TRANSFERENCE: AFFECT INTEGRATION FOLLOWING RECOVERY OF A TRAUMATIC EXPERIENCE**
..... Jackson (Terrace Level)
Chair &
Presenter: Richard K. Hertel, Ph.D.
Co-chair &
Discussant: Melvin R. Lansky, M.D.
Coordinator: Merton A. Shill, Ph.D.
- 58 DR. LEO RANGELL ON THE MIND OF WATERGATE UPDATED: THE EGO IN POLITICS AND PUBLIC OPINION**
..... Chevy Chase (Terrace Level)
Chair &
Coordinator: Theodore J. Jacobs, M.D.
Co-chair: Daniel H. Jacobs, M.D.
Presenter: Leo Rangell, M.D.
- 59 BETWEEN WINNICOTT AND LACAN: OBJECT RELATIONS AND DESIRE IN PSYCHOANALYSIS**
..... Kalorama (Terrace Level)
Chair: Lewis A. Kirshner, M.D.
Presenters: Deborah Luepnitz, Ph.D.*
Murray Schwartz, Ph.D.*
- 60 WHEN PARENTS CHANGE AND NEED CARE: ANOTHER DEVELOPMENTAL CRISIS OF MIDLIFE: — CANCELLED**
- 61 RESEARCH ON THE RELATION OF PSYCHOANALYSIS AND NEUROSCIENCE: THINKING ABOUT FEELINGS: A SOCIAL COGNITIVE NEUROSCIENCE APPROACH**
..... State Room (Terrace Level)
Chair: Morton F. Reiser, M.D.
Co-chair: Elise W. Snyder, M.D.
Presenter: Kevin Ochsner, Ph.D.*
Coordinator: Charles P. Fisher, M.D.

4:45 P.M.-7:00 P.M.

Two-Day Clinical Workshop #1, Part 2:

WORKSHOP SERIES IN PROCESS AND TECHNIQUE
..... Jefferson Ballroom West (Concourse Level)

4:45 P.M.-7:00 P.M.

Two-Day Clinical Workshop #2, Part 2:

WORKSHOP SERIES IN PROCESS AND TECHNIQUE
..... Jefferson Ballroom East (Concourse Level)

4:45 P.M.-7:00 P.M.

Two-Day Clinical Workshop #3, Part 2:

PSYCHOTHERAPY TECHNIQUE AND PROCESS
..... Lincoln Ballroom West (Concourse Level)

SCIENTIFIC PROGRAM

THURSDAY, JUNE 15, 2006

4:45 P.M.-7:00 P.M.

Child and Adolescent Two-Day Clinical Workshop, Part 2:

SEPARATION AND TERMINATION IN THE ANALYSIS OF A BULIMIC ADOLESCENT GIRL

..... Adams (Terrace Level)

4:45 P.M.-7:15 P.M.

Special Programs for Psychiatric Residents, Psychology and Social Work Students # 1:

FRIENDS OR FOES: COMBINING PSYCHODYNAMIC AND COGNITIVE/BEHAVIORAL TREATMENTS

..... Military Room (Concourse Level)

Faculty: Joan Wheelis, M.D.

Chair: Jason A. Wheeler, Ph.D.*

Presenter: Anne C. Duroe, M.A., M.S.W.*

7:30 P.M.-10:00 P.M.

Discussion Groups

62 INTENSE & CHALLENGING NON-VERBAL COMMUNICATION FROM PATIENTS: HOW DOES AN ANALYST RESPOND?

..... Lincoln Ballroom West (Concourse Level)

Co-chairs &

Presenters: Harmon Biddle, M.S.W.*

Molly M. Jones-Quinn, Ph.D.

63 INTERSUBJECTIVITY AND TRANSFORMATIONAL MOMENTS IN PSYCHOANALYSIS AND CREATIVE WORKS: THE EXAMPLE OF "J. ROBERT OPPENHEIMER, 'AMERICAN PROMETHEUS'"

..... Jefferson Ballroom West (Concourse Level)

Chair: R. Curtis Bristol, M.D.

Co-chair: Sandra G. Hersherg, M.D.

Presenters: Kai Bird*

Martin J. Sherwin*

64 DEEPENING THE TREATMENT: FROM PSYCHOTHERAPY TO PSYCHOANALYSIS

..... Jefferson Ballroom East (Concourse Level)

Co-chairs: Elizabeth B. Fritsch, Ph.D.

Jane S. Hall, L.C.S.W., F.I.P.A.

Presenters: Catherine Anderson, Ph.D.*

Cynthia N. Mendelson, Ph.D.*

65 PSYCHOANALYTIC TREATMENT OF PATIENTS WITH PSYCHOSOMATIC SYMPTOMS: PSYCHOANALYTIC TREATMENT OF A PATIENT WITH IRRITABLE BOWEL SYNDROME: FROM THE CONCRETE TO THE SYMBOLIC

..... Adams (Terrace Level)

Chair &

Coordinator: Phyllis L. Sloate, Ph.D.

Presenter: Eileen A. Kohutis, Ph.D.

66 PSYCHOANALYSIS AND CHINA

..... State Room (Terrace Level)

Chair: Elise W. Snyder, M.D.

Coordinator: Edward T. Kenny, M.D.

7:30 P.M.-10:00 P.M.

Discussion Groups

67 TOWARDS AN UNDERSTANDING OF LONELINESS AND ALONENESS

..... Chevy Chase (Terrace Level)

Chair: Lucille Spira, Ph.D., C.S.W.*

Co-chair: George A. Sagi, M.D.

Presenter: Nancy Cromer-Grayson, L.C.S.W.*

Coordinator: Nancy R. Goodman, Ph.D.

7:30 P.M.

Film Presentation: PSYCHOANALYSIS AND FILM: MURDER FOR MURDER: A SHORT FILM ABOUT KILLING—DECALOGUE V (KIESLOWSKI, 1990)

..... Georgetown Ballroom (Concourse Level)

Chair: Bruce H. Sklarew, M.D.

Presenter: Esther Rashkin, Ph.D., L.C.S.W.*

FRIDAY, JUNE 16, 2006

BUSINESS MEETING OF MEMBERS

Members' Coffee 7:30 A.M.

..... Lincoln Ballroom (Concourse Level)

Business Meeting 8:00 A.M.

..... Lincoln Ballroom (Concourse Level)

Chair: Jon Meyer, M.D.

President, The American

Psychoanalytic Association

Awards & Prizes 8:30 A.M.

JAPA Prize

Scientific Paper Prize

National Psychoanalytic Woman

Scholar Award

State of the Association –

Jon Meyer, M.D. 9:00 A.M.

New Business

Adjournment 9:30 A.M.

9:45 A.M.-11:15 A.M.

Plenary Presentation: *HAMLET*

AND PSYCHOANALYTIC EXPERIENCE

..... Lincoln Ballroom (Concourse Level)

Chair: K. Lynne Moritz, M.D.

Introducer: Richard L. Munich, M.D.

Speaker: Paul Schwaber, Ph.D.

11:15 A.M.-11:30 A.M.

THE DEBUT OF APSAA'S NEW WEBSITE

..... Lincoln Ballroom (Concourse Level)

Chair: Dean K. Stein*

Presenters: Brian Canty*

Dottie Jeffries*

11:30 A.M.-1:30 P.M.

The 2005 Affiliate Council Scientific Paper

Prize Semi-Finalist: **THE WORLD OF WILLIAM**

STEIG: A CREATIVE REPRESENTATION OF EARLY SEPARATION AND RESILIENCY

..... Thoroughbred Room (Concourse Level)

Chair: Julio G. Calderon, M.D.

Co-chair: Carol B. Levin, M.D.

Author: Susan Scheftel, Ph.D.

Interviewer: Ethan M. Grumbach, L.C.S.W.

SCIENTIFIC PROGRAM

FRIDAY, JUNE 16, 2006

12:00 NOON-1:30 P.M.

Symposium I: **OUT OF THE TOWER AND INTO THE COMMUNITY: PSYCHOANALYSTS MEET THE STREETS**

..... Jefferson Ballroom West (Concourse Level)

Co-chairs: *Lola Greenspan, M.A., M.F.T.**
*Corrine L. Hatton, Ph.D.**
*Carol Tanenbaum, Ph.D., M.F.T.**

12:00 NOON-1:30 P.M.

Symposium II: **HELPING FAMILIES DEAL WITH TRAUMATIC BEREAVEMENT AT THE DISTRICT OF COLUMBIA MORGUE**

..... Hemisphere Room (Concourse Level)

Chair &
Presenter: *Bruce H. Sklarew, M.D.*
Presenter: *Stephanie Handel, L.G.S.W.**

12:00 NOON-1:30 P.M.

Special Program for Mid-Career Analysts:

Sponsored by the Task Force for Mid-Career Analysts

..... Military Room (Concourse Level)

Chair: *Zenobia Grusky, Ph.D.*

2:00 P.M.-4:30 P.M.

Special Programs for Psychiatric Residents, Psychology and Social Work Students #2:

SPIRITUALITY AND THE ROLE OF RELIGION IN TREATMENT

..... Military Room (Concourse Level)

Faculty: *Jeremy D. Safran, Ph.D.*
Chair: *Anita R. Kishore, M.D.**
Presenter: *Mark Davila, M.S.W.**

2:00 P.M.-5:00 P.M.

Panel I: **CURRENT VIEWS OF THE OEDIPAL COMPLEX**

..... Lincoln Ballroom (Concourse Level)

Chair: *Warren S. Poland, M.D.*
Panelists: *Dale M. Boesky, M.D.*
Marcia Cavell, Ph.D.
Jay Greenberg, Ph.D.
Reporter: *Sara S. Tucker, M.D.*

2:00 P.M.-5:00 P.M.

Psychoanalytic Dialogue: **RED, BLUE AND YOU: THE ANALYST IN A SOCIAL CONTEXT, PART 2**

..... Jefferson Ballroom East (Concourse Level)

Chair: *Irene Cairo, M.D.*
Presenters: *Richard Almond, M.D.*
Stephen H. Portuges, Ph.D.

2:00 P.M.-5:00 P.M.

Scientific Papers – Section I

..... Jefferson Ballroom West (Concourse Level)

Chair: *Antoine G. Hani, M.D.*

2:00 P.M.

CASE FINDING OR CASE MAKING?: INTENSIFYING THE FREQUENCY OF SESSIONS AND CREATING ANALYTIC PATIENTS

Author: *Howard B. Levine, M.D.*
Discussant: *Stephen D. Kerzner, M.D.*

3:30 P.M.

TEMPORALITY AND THE PSYCHOANALYTIC NARRATIVE

Author: *Frank Summers, Ph.D.*
Discussant: *Erik Gann, M.D.*

2:00 P.M.-5:00 P.M.

Discussion of Pre-Circulated Paper A**

..... Hemisphere Room (Concourse Level)

DO CHILDREN GET BETTER WHEN WE INTERPRET THEIR DEFENSES AGAINST PAINFUL FEELINGS?

Author: *Leon Hoffman, M.D.*
Chair &
Discussant: *Martin A. Silverman, M.D.*

5:15 P.M.-6:45 P.M.

Inaugural Gertrude and Ernst Ticho Memorial Lecture: **THE SECOND PERSON**

(To be immediately followed by a Reception in the Gazebo)

..... Lincoln Ballroom (Concourse Level)

Chair: *Jon Meyer, M.D.*
Introducer: *Arnold Goldberg, M.D.*
Speaker: *Bonnie E. Litowitz, Ph.D.*

SATURDAY, JUNE 17, 2006

7:00 A.M.-9:00 A.M.

Discussion with the Committee on Scientific Activities: **THE USE OF PERSONAL COMPUTERS FOR PSYCHOANALYTIC STUDIES**

..... Jefferson Ballroom East (Concourse Level)

Co-chairs: *Paul W. Mosher, M.D.*
Lee D. Brauer, M.D.

9:00 A.M.-11:30 A.M.

Special Programs for Psychiatric Residents, Psychology and Social Work Students #3:

WHEN IT'S MORE THAN TWO: PSYCHODYNAMIC REFLECTIONS ON GROUP THERAPY

..... Military Room (Concourse Level)

Faculty: *Barry J. Wepman, Ph.D.**
Chair: *Duncan MacCourt, J.D., M.D.**
Presenter: *Megan S. Jessiman, Ph.D.**

Psychodynamic Diagnostic Manual

(PDM)

A collaborative effort of the

- American Psychoanalytic Association
- International Psychoanalytic Association
- Psychoanalysis Division (39) of the American Psychological Association
- American Academy of Psychoanalysis and Dynamic Psychiatry
- National Membership Committee on Psychoanalysis in Clinical Social Work

Psychodynamic Diagnostic Manual

(PDM)

A collaborative effort of the
American Psychoanalytic Association
International Psychoanalytic Association
Division [39] of the American Psychological Association
American Academy of Psychoanalysis
National Membership Committee on Psychoanalysis in Clinical Social Work

600 pages; 7" x 10"

Paper: \$35.00 USD; Cloth: \$45.00 USD

<http://www.pdm1.org>

The *Psychodynamic Diagnostic Manual (PDM)* is the result of a unique collaboration among the major psychoanalytic organizations. The PDM covers adults, children and adolescents, and infants, and systematically describes:

- **Healthy and disordered personality functioning**
- **Individual profiles of mental functioning**, including patterns of relating, comprehending, and expressing feelings, coping with stress and anxiety, observing one's own emotions and behaviors, and forming moral judgments
- **Symptom patterns**, including differences in each individual's personal or subjective experience of his or her symptoms

For the past two years a task force selected by presidents of the psychoanalytic organizations listed above systematized the descriptions of both the deeper and surface levels of an individual's personality, emotional and social functioning, and symptom patterns, emphasizing individual variations as well as commonalities. The PDM describes the whole person and complements the DSM and ICD efforts in cataloguing symptoms and behaviors.

The PDM opens the door to improvements in diagnosis and treatment of mental health disorders and to a fuller understanding of the functioning of the mind and brain and their development.

DON'T MISS THE ENCORE SYMPOSIUM.

Saturday, June 17, 2006 12:00 NOON-1:30 PM

Lincoln Ballroom (Concourse Level)

Chair: Stanley I. Greenspan, M.D.

Panelists: Jon Meyer, M.D., Nancy McWilliams, Ph.D. & Jonathan Shedler, Ph.D.*

To order the *Psychodynamic Diagnostic Manual*,

call 301-789-1660, visit <http://www.pdm1.org>

or

pick up an order form in the exhibit area at APsA's online store

Place your order now

SCIENTIFIC PROGRAM

SATURDAY, JUNE 17, 2006

9:00 A.M.-12:00 NOON

Panel II: **PLURALISM IN ACTION**

..... Lincoln Ballroom (Concourse Level)

Chair &

Panelist: Steven H. Cooper, Ph.D.

Panelists: James P. Frosch, M.D.

Stephen Seligman, D.M.H.

Doris K. Silverman, Ph.D.

Reporter: David H. Brendel, M.D., Ph.D.

9:00 A.M.-12:00 NOON

Child and Adolescent Panel: **PLAY
IN THE PSYCHOANALYTIC SITUATION**

..... Monroe Ballroom (Concourse Level)

Chair: Karen Gilmore, M.D.

Panelists: Wendy Olesker, Ph.D.

Alan Sugarman, Ph.D.

Judith A. Yanof, Ph.D.

Reporter: Frances Lang, L.I.C.S.W.

9:00 A.M.-12:00 NOON

University Forum: **IMPLICIT ASSOCIATIONS:
RACE IN POLITICS AND CLINICAL PRACTICE**

..... Jefferson Ballroom West (Concourse Level)

Chairs: Forrest M. Hamer, Ph.D.

Sandra C. Walker, M.D.

*Presenters: Jane Flax, Ph.D.**

*Brian Nosek, Ph.D.**

9:00 A.M.-12:00 NOON

Scientific Papers – Section II

..... Thoroughbred Room (Concourse Level)

Chair: Christopher J. Keats, M.D.

9:00 A.M.

UNEASY INTIMACY, THE SIREN'S CALL

*Author: Margaret Crastnopol, Ph.D.**

Discussant: Susan G. Lazar, M.D.

10:30 A.M.

**THE ROLE OF CONCRETENESS IN FEMALE
GENITAL PAIN**

Author: Molly M. Jones-Quinn, Ph.D.

Discussant: Rosemary H. Balsam, M.D.

12:00 NOON-1:30 P.M.

Symposium III: **EDUCATORS AND
PSYCHOANALYSTS: WORKING TOGETHER IN A
SCHOOL-BASED MENTAL HEALTH PROGRAM: A
CRITICAL PARTNERSHIP: SPONSORED BY THE
LIAISON TO SCHOOLS COMMITTEE**

..... Jefferson Ballroom East (Concourse Level)

Co-chairs: Stephen D. Kerzner, M.D.

Bruce H. Sklarew, M.D.

*Presenters: Olga Acosta, Ph.D.**

William L. Granatir, M.D.

*Mary Gardiner Jones, L.L.B.**

12:00 NOON-1:30 P.M.

Encore Symposium: **THE PSYCHODYNAMIC
DIAGNOSTIC MANUAL (PDM)**

..... Lincoln Ballroom (Concourse Level)

Chair: Stanley I. Greenspan, M.D.

Panelists: Jon Meyer, M.D.

*Nancy McWilliams, Ph.D.**

Jonathan Shedler, Ph.D.

2:00 P.M.-5:00 P.M.

Panel III: **CLOSE PROCESS ATTENTION: CLINICAL
ADVANTAGES AND DISADVANTAGES**

..... Lincoln Ballroom (Concourse Level)

Chair: Henry F. Smith, M.D.

Presenter: Lawrence Levenson, M.D.

Panelists: Lawrence Friedman, M.D.

Alexandra M. Harrison, M.D.

Steven T. Levy, M.D.

Shelley Orgel, M.D.

Cecilio Paniagua, M.D.

*Reporter: Diane Pearlman, L.I.C.S.W.**

2:00 P.M.-5:00 P.M.

Meet-the-Author: **THE HEALER'S BENT:
SOLITUDE AND DIALOGUE IN THE CLINICAL
ENCOUNTER, BY JAMES T. MCLAUGHLIN, M.D.**

..... Monroe Ballroom (Concourse Level)

Chair: Evelynne Albrecht Schwaber, M.D.

Author: James T. McLaughlin, M.D.

Discussants: Nancy J. Chodorow, Ph.D.

Theodore J. Jacobs, M.D.

2:00 P.M.-4:30 P.M.

Special Event for Students and Trainees:

**A WAY OF LISTENING: CASE
CONCEPTUALIZATION AND TREATMENT
PLANNING IN THE INITIAL SESSIONS: CO-
SPONSORED BY THE COMMITTEE ON STUDENT
ASSOCIATES AND THE FORMER FELLOWS OF THE
AMERICAN PSYCHOANALYTIC ASSOCIATION**

..... Military Room (Concourse Level)

*Co-chairs: Brenda Bauer, Psy.D.**

Anthony D. Bram, Ph.D.

Faculty: Mary Jo Peebles-Kleiger, Ph.D.

*Presenters: Lois W. Choi-Kain, M.D.**

*Renee D. Rodgers, M.S.W.**

2:00 P.M.-5:00 P.M.

Scientific Papers – Section III

..... Thoroughbred Room (Concourse Level)

Chair: Danille S. Drake, Ph.D.

2:00 P.M.

THE OTHER

Author: Joseph D. Lichtenberg, M.D.

Discussant: Richard B. Zimmer, M.D.

3:30 P.M.

**PSYCHOANALYSIS IN TEXTBOOKS OF
INTRODUCTORY PSYCHOLOGY: A REVIEW**

Authors: Sandra W. Park, M.D.

Elizabeth L. Auchincloss, M.D.

Discussant: Helen B. Stein, Ph.D.

SCIENTIFIC PROGRAM

SATURDAY, JUNE 17, 2006

2:00 P.M.-5:00 P.M.

Discussion of Pre-Circulated Paper B**

..... Hemisphere Room (Concourse Level)

SHAKESPEARE'S IDENTITY CRISIS: REVISITING FREUD'S OPINIONS ON THE AUTHORSHIP OF SHAKESPEARE'S WORKS

Author: Richard M. Waugaman, M.D.

Chair &

Discussant: Jeffrey Stern, Ph.D.

SUNDAY, JUNE 18, 2006

9:00 A.M.-12:00 NOON

Panel IV: **TEACHER AS ANALYST/ANALYST AS TEACHER: A CONFUSION OF TONGUES IN THE ANALYTIC CLASSROOM?**

..... Monroe Ballroom (Concourse Level)

Chair &

Panelist: Sidney H. Phillips, M.D.

Panelists: Ellen O'Neil Helman, M.S.W.

Dawn M. Skorczewski, Ph.D.*

Reporter: Ethan M. Grumbach, L.C.S.W.

9:00 A.M.-11:30 A.M.

Special Programs for Psychiatric Residents, Psychology and Social Work Students #4:

CREATING THE FRAME IN CHILD THERAPY

..... Military Room (Concourse Level)

Faculty: Timothy F. Dugan M.D.

Chair: Jennifer M. Shannon, M.D.*

Presenter: Gabriella Serruya-Green, Psy.D.*

9:00 A.M.-12:00 NOON

Scientific Papers – Section IV

..... Lincoln Ballroom East (Concourse Level)

Chair: Scott S. Twentyman, M.D.

9:00A.M.

SEDUCTION, ABDUCTION, AND THE DISPOSITION TO TRAUMA: THE WORK OF KARL ABRAHAM AND THE MYTH OF PERSEPHONE

Author: Michael I. Good, M.D.

Discussant: Nancy Kulish, Ph.D.

10:30 A.M.

THE CLINICAL POWER OF METAPHORIC EXPERIENCE

Author: Joseph D. Lichtenberg, M.D.

Discussant: Silvia M.V. Bell, Ph.D.

In the program, sessions highlighted with this shaded band required advance enrollment. However, walk-ins, with the approval of the chairperson at the door, will be accepted on a space available basis.

Please select another group for sessions in which enrollment is CLOSED.

EXPLANATION OF FOOTNOTES

* Invited Participant

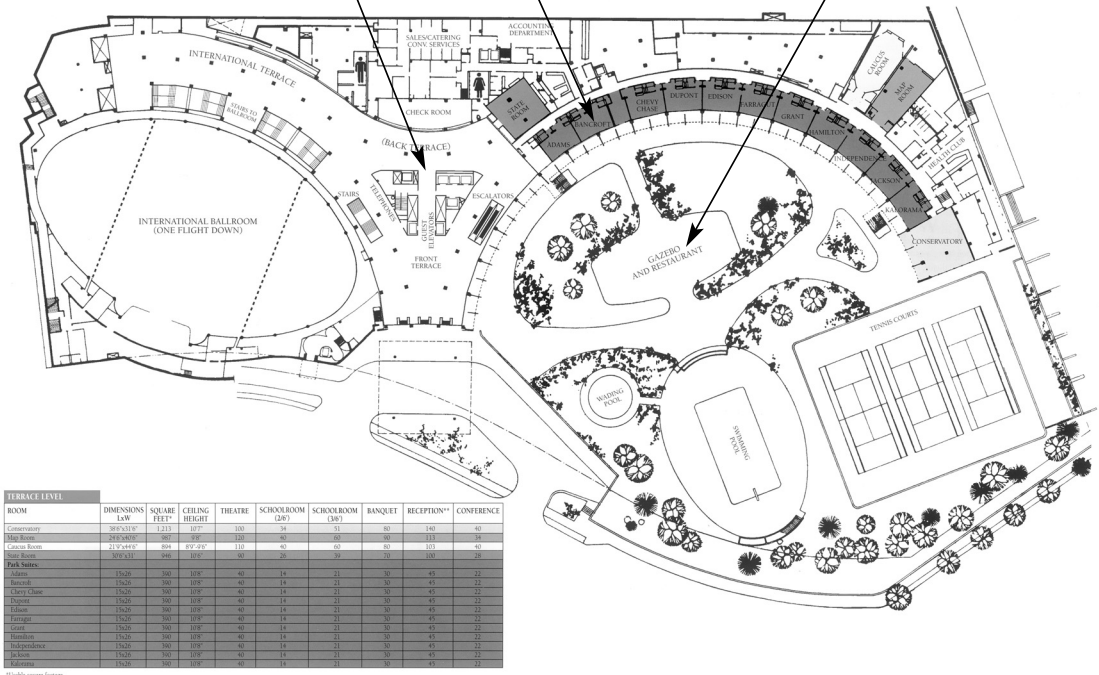
** Note, this paper will not be read but will be discussed with the author by interested persons. Admission to the discussion is limited to those who have requested and received the paper in advance.

Gertrude & Ernst Ticho Memorial Lecture Reception
 Reception for Affiliate Members, Candidates,
 Associates (Educator, Psychotherapist, Research
 and Student) Newcomers and Fellows

Registration
& Exhibits

Headquarters
& Press Room

THE TERRACE LEVEL



ROOM	DIMENSIONS LAW	SQUARE FEET	CEILING HEIGHT	THEATRE	SCHOOLROOM (DR)	SCHOOLROOM (DB)	BANQUET	RECEPTION**	CONFERENCE
Conservatory	385x515 ¹⁷	12113	103		34	31	80	140	40
Main Ballroom	245x485 ¹⁶	9861	100	46	66	80	80	115	36
Concave Room	315x445 ¹⁶	824	47' 2 1/2"	110	40	40	40	100	40
Ball Room	300x315	944	105'	30	20	30	70	100	28
Adams	150x20	300	105'	40	14	21	30	45	22
Hancock	150x20	300	105'	40	14	21	30	45	22
Clery Chase	150x20	300	105'	40	14	21	30	45	22
Depew	150x20	300	105'	40	14	21	30	45	22
Hilary	150x20	300	105'	40	14	21	30	45	22
Ferriss	150x20	300	105'	40	14	21	30	45	22
Grant	150x20	300	105'	40	14	21	30	45	22
Haskell	150x20	300	105'	40	14	21	30	45	22
Hughes	150x20	300	105'	40	14	21	30	45	22
Jackson	150x20	300	105'	40	14	21	30	45	22
Lincoln	150x20	300	105'	40	14	21	30	45	22

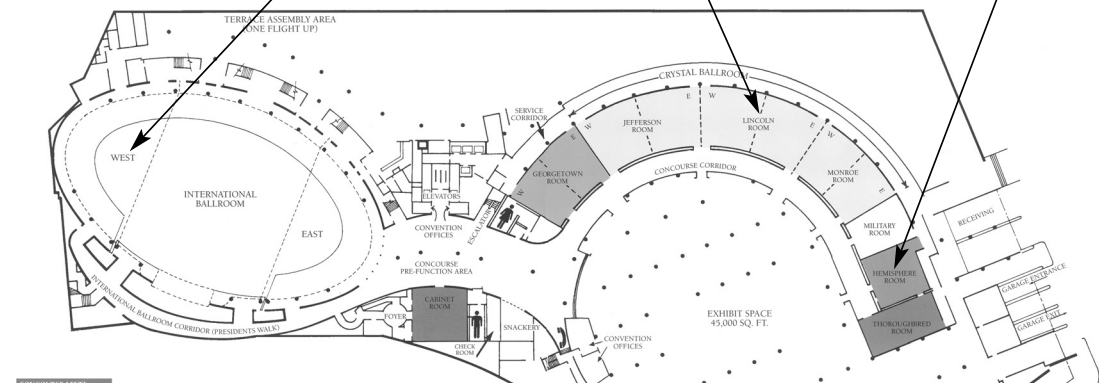
**Usable square footage
 **Capacities take into consideration placement of bars, cocktail stands, food stations and experience of hotel

THE CONCOURSE LEVEL

BOPS
Executive Council

Business Meeting of Members
The Deput of APsA's New Website

Affiliate
Council



ROOM	DIMENSIONS LAW	SQUARE FEET	CEILING HEIGHT	THEATRE	SCHOOLROOM (DR)	SCHOOLROOM (DB)	BANQUET	RECEPTION**	CONFERENCE
International Ballroom	145x217	31,813	115'-20"	4,050	N.A.	N.A.	3,000	4,000	N.A.
Concave Ballroom	153x181	27,741	115'-20"	2,000	N.A.	N.A.	2,100	3,000	N.A.
East	86x145	12,470	115'-20"	750	212	318	550	800	N.A.
West	86x145	12,470	115'-20"	750	212	318	550	800	N.A.
Crystal Ballroom	86x145	12,470	115'-20"	750	212	318	550	800	N.A.
Jefferson Ballroom	246x42	11,008	10'	1,300	N.A.	N.A.	900	1,200	N.A.
Lincoln Ballroom	192x42	8,064	10'	950	N.A.	N.A.	500	800	N.A.
Military Room	228x42	9,576	10'	1,110	N.A.	N.A.	700	1,000	N.A.
HemiSphere Room	96x42	4,032	10'	480	N.A.	N.A.	340	450	N.A.
East	146x42	6,168	10'	715	N.A.	N.A.	500	650	N.A.
West	150x42	6,300	10'	875	N.A.	N.A.	620	800	N.A.
East	135x42	5,748	10'	675	N.A.	N.A.	450	550	N.A.
Lincoln Ballroom	186x42	7,896	10'	825	N.A.	N.A.	570	700	N.A.
Lincoln Ballroom	186x42	7,896	10'	825	N.A.	N.A.	570	700	N.A.
Lincoln Ballroom	186x42	7,896	10'	825	N.A.	N.A.	570	700	N.A.
Lincoln Ballroom	186x42	7,896	10'	825	N.A.	N.A.	570	700	N.A.
West	48x42	2,016	10'	240	80	110	110	132	40
East	48x42	2,016	10'	240	80	110	110	132	40
Lincoln Ballroom	96x42	4,032	10'	475	160	240	340	460	N.A.
West	48x42	2,016	10'	240	80	110	110	132	40
East	48x42	2,016	10'	240	80	110	110	132	40
Military Room	72x41	2,952	10'	350	124	186	240	320	N.A.
West	36x41	1,476	10'	180	62	93	120	150	14
East	36x41	1,476	10'	180	62	93	120	150	14

**Usable square footage
 **Capacities take into consideration placement of bars, cocktail stands, food stations and experience of hotel

ROOM	DIMENSIONS LAW	SQUARE FEET	CEILING HEIGHT	THEATRE	SCHOOLROOM (DR)	SCHOOLROOM (DB)	BANQUET	RECEPTION**	CONFERENCE
Georgetown Ballroom	118x141	16,738	99'	150	124	186	240	320	N.A.
East	36x41	1,476	99'	60	62	93	120	150	14
West	36x41	1,476	99'	60	62	93	120	150	14
Military Room	146x41	6,046	10'	180	60	90	100	150	14
Georgetown Ballroom	118x141	16,738	99'	150	124	186	240	320	N.A.
East	36x41	1,476	99'	60	62	93	120	150	14
West	36x41	1,476	99'	60	62	93	120	150	14
Exhibit Hall	177x190	45,000	F.P.	N.A.	N.A.	N.A.	3,000	4,500	N.A.

THE AMERICAN PSYCHOANALYTIC ASSOCIATION

309 East 49th Street
New York, New York 10017
(212) 752-0450

OFFICERS

Jon Meyer, M.D. President
K. Lynne Moritz, M.D. President-Elect
Prudence L. Gourguechon, M.D. Secretary
Warren Procci, M.D. Treasurer

BOARD ON PROFESSIONAL STANDARDS

Eric J. Nuetzel, M.D. Chair, BOPS
Beth J. Seelig, M.D. Secretary, BOPS

STAFF

Dean K. Stein Executive Director
Extension 30
E-Mail: deankstein@apsa.org

Chris Broughton Registration Coordinator
Extension 19
E-Mail: cbroughton@apsa.org

Brian Canty Manager, Computer Information Services
Extension 17
E-Mail: bcanty@apsa.org

William Damante, Jr. Assistant to Manager, Computer Information Services and
Extension 18 Assistant to Manager, Education and Membership Services
E-Mail: wdamante@apsa.org

Debra L. Eder Scientific Program and Meetings Director
Extension 21
E-Mail: deder@apsa.org

Sherkima Edwards Accounts Receivable Clerk
Extension 15
E-Mail: sedwards@apsa.org

Tina Faison Administrative Assistant to the Executive Director
Extension 23
E-Mail: tfaison@apsa.org

Carolyn M. Gatto Deputy Administrative Director/Meeting Planner
Extension 20
E-Mail: cgatto@apsa.org

Dottie Jeffries Director of Public Affairs
Extension 29
E-Mail: djeffries@apsa.org

Lisa Jong Assistant to the Scientific Program and Meetings Director
Extension 28
E-Mail: meetadmin@apsa.org

Amy Levine Murray Accreditation Coordinator
Extension 22 (on Mondays)
E-Mail: accredit@apsa.org

Nerissa Steele-Browne Manager, Accounting Department
Extension 16
E-Mail: nsteele@apsa.org

Debra Steinke Wardell Manager, Education and Membership Services
Extension 26
E-Mail: dsteinke@apsa.org

Lyvett Velazquez Assistant to the Meeting Planner
Extension 12
E-Mail: lvelazquez@apsa.org

THE AMERICAN PSYCHOANALYTIC ASSOCIATION

PROGRAM COMMITTEE

Glen O. Gabbard, M.D., *Chair*
Beverly H. Betz, MSW, M.Ed.
Irene Cairo, M.D.
Nancy J. Chodorow, Ph.D.
Judith Fingert Chused, M.D.
Stanley J. Coen, M.D.
Margaret Crastnopol, Ph.D.*
Jody Messler Davies, Ph.D.*
Ruth S. Fischer, M.D.
Richard P. Fox, M.D.
Henry J. Friedman, M.D.
Lawrence Friedman, M.D.
Gary Grossman, Ph.D.
Patrick J. Haggard, M.D.

Ellen O'Neil Helman, M.S.W.
Sandra G. Hershberg, M.D.
Kenneth R. King, M.D.
Kimberlyn Leary, Ph.D.
Bonnie E. Litowitz, Ph.D.
Mary Margaret McClure, D.M.H.
Julie Jaffee Nagel, Ph.D.
Reginia Pally, M.D.
Warren S. Poland, M.D.
Owen Renik, M.D.
Steven Roose, M.D.
Robert D. Scharf, M.D.
Peter Schou, Ph.D.*
Henry F. Smith, M.D.

Helen B. Stein, Ph.D.
Elizabeth Tuters
(*Rep. Canadian Psa. Soc.*)*
Stuart W. Twemlow, M.D.
Phyllis Tyson, Ph.D.
Joan Wheelis, M.D.
Jerome Winer, M.D.
Sharon Zalusky, Ph.D.
Richard B. Zimmer, M.D.
Dwarakanath G. Rao, M.D.
(*Continuing Education Liaison*)
Steven T. Levy, M.D.
(*Ex Officio 2003*)

LOCAL ARRANGEMENTS COMMITTEE

Diane V. Daum, M.D., *Co-chair*
Sandra G. Hershberg, M.D., *Co-chair*
Danille S. Drake, Ph.D.

Nancy Goodman, Ph.D.*
Christopher J. Keats, M.D.
Joanna Lhulier, Psy.D.*

Tarpley M. Long, M.S.W.
Karyne E. Messina, Ed.D.
Christie M. Platt, Ph.D.

*Non-member



Save the Date

JANUARY 17-21, 2007

WALDORF ASTORIA HOTEL
NEW YORK

APSAA
Winter 2007 Meeting

PROGRAM PARTICIPANTS

A

Acosta, Olga, Ph.D.
Akhtar, Salman, M.D.
Albrecht Schwaber, Evelyne, M.D.
Almond, Richard, M.D.
Anderson, Catherine, Ph.D.
Anzieu-Premmereur, Christine, M.D., Ph.D.
Apfel, Roberta J., M.D., M.P.H.
Aruffo, Roy N., M.D.
Ascherman, Lee I., M.D.
Auchincloss, Elizabeth L., M.D.

B

Bail, Bernard W., M.D.
Balsam, Rosemary H., M.D.
Band, Raymond I., M.D.
Basseches, Harriet I., Ph.D.
Baudry, Francis D., M.D.
Bauer, Brenda, M.S.
Beaumont, Ralph, M.D.
Behnke, Stephen H., Ph.D.
Bell, Silvia M.V., Ph.D.
Bernstein, Stephen B., M.D.
Betz, Beverly H., M.S.W., M.Ed.
Biddle, Harmon, M.S.W.
Bird, Kai
Blatt, Sidney J., Ph.D.
Blumenthal, Ellen G., M.D.
Boesky, Dale M., M.D.
Bornstein, Melvin, M.D.
Bram, Anthony D., Ph.D.
Brauer, Lee D., M.D.
Brendel, David H., M.D., Ph.D.
Brinich, Paul M., Ph.D.
Bristol, R. Curtis, M.D.
Bronstein, Abbot A., Ph.D.
Brown, Jessica, M.D.
Burnham, Donald L., M.D.

C

Cairo, Irene, M.D.
Calderon, Julio G., M.D.
Canty, Brian
Cath, Phyllis J., M.D.
Cavell, Marcia, Ph.D.

Chertoff, Judith M., M.D.
Chodorow, Nancy J., Ph.D.
Choi-Kain, Lois W., M.D.
Chused, Judith Fingert, M.D.
Clemens, Norman A., M.D.
Coen, Stanley J., M.D.
Cohen, Robert A., M.D.
Cohen, Theodore B., M.D.
Cooper, Steven H., Ph.D.
Coutu, Carol W., Ph.D.
Crastrnopol, Margaret, Ph.D.
Cromer-Grayson, Nancy, L.C.S.W.

D

Danon-Apter, Gisele, M.D.
Davila, Mark, M.S.W.
Davis, Mary, M.D.
Dietrich, David R., Ph.D.
Drake, Danille S., Ph.D.
Dugan, Timothy F., M.D.
Duroe, Anne C., M.A., M.S.W.

E

Ellman, Paula, Ph.D.
Elmendorf, Susan S., M.S.W.
Etezady, M. Hossein, M.D.

F

Farley, Arthur J., M.D.
Fast, Daniel E., M.D.
Fisher, Charles P., M.D.
Flax, Jane, Ph.D.
Frank, Daniel B., Ph.D.
Frank, Elaine, M.S.W.
Freeman, Daniel M. A., M.D.
Friedman, Cary D., M.D.
Friedman, Lawrence, M.D.
Fritsch, Elizabeth B., Ph.D.
Frosch, James P., M.D.

G

Gabbard, Glen O., M.D.
Gann, Erik, M.D.

PROGRAM PARTICIPANTS

Gann, Maxine F., Ph.D.
 Gardiner Jones, Mary, L.L.B.
 Gilmore, Karen, M.D.
 Ginsburg, Sybil A., M.D.
 Goldberg, Arnold, M.D.
 Goldberg, Steven H., M.D.
 Good, Michael I., M.D.
 Goodman, Nancy R., Ph.D.
 Goodwin, Jean, M.D., M.P.
 Granatir, William L., M.D.
 Gray, Sheila Hafter, M.D.
 Greenberg, Jay, Ph.D.
 Greenberg, Maida J., Ed.D.
 Greenspan, Lola, M.A., M.F.T.
 Greenspan, Stanley I., M.D.
 Griffin, Fred L., M.D.
 Gruenberg, Kenneth M., M.D.
 Grumbach, Ethan M., L.C.S.W.
 Grunes, Dorothy T., M.D.
 Grunes, Jerome M., M.D.
 Grusky, Zenobia, Ph.D.
 Gunsberg, Linda, Ph.D.

H

Hall, Jane S., L.C.S.W., F.I.P.A.
 Hamer, Forrest M., Ph.D.
 Hamm, Paula J., M.A., L.P.C.
 Handel, Stephanie, L.G.S.W.
 Hani, Antoine G., M.D.
 Hansell, James H., Ph.D.
 Harrison, Alexandra M., M.D.
 Hatton, Corrine L., Ph.D.
 Hayes, John M., Ph.D.
 Helm, Fonya Lord, Ph.D., A.B.P.P.
 Helman, Ellen O'Neil, M.S.W.
 Hersh, Elizabeth K., M.D.
 Hershberg, Sandra G., M.D.
 Hertel, Richard K., Ph.D.
 Hoffer, Axel, M.D.
 Hoffman, Leon, M.D.
 Holinger, Paul C., M.D.
 Holtzman, Deanna, Ph.D.
 Horan, Robert, Atty.

J

Jacobs, Daniel H., M.D.
 Jacobs, Theodore J., M.D.
 Jaegerman, Anne, M.S.
 Jarass, Dr. Heidrun,
 Jeffries, Dottie
 Jessiman, Megan S., Ph.D.
 Jones-Quinn, Molly M., Ph.D.

K

Kaner, Angelica, Ph.D.
 Kantowitz, Judy L., Ph.D.
 Kastor, Mae, M.S.W.
 Katz, Howard M., M.D.
 Keats, Christopher J., M.D.
 Kelly, Maurine Kelber, Ph.D., C.P.A., F.I.P.A.
 Kenny, Edward T., M.D.
 Kerzner, Stephen D., M.D.
 Kilborne, Benjamin, Ph.D.
 Kirshner, Lewis A., M.D.
 Kishore, Anita R., M.D.
 Kliman, Gilbert W., M.D.
 Kohn, Edward I., M.D.
 Kohutis, Eileen A., Ph.D.
 Kraebber, Andreas K., M.D.
 Kulish, Nancy, Ph.D.

L

Landau, Barry J., M.D.
 Lang, Frances, L.I.C.S.W.
 Lansky, Melvin R., M.D.
 Lazar, Susan G., M.D.
 Lefcourt, Ilene Sackler
 Levenson, Lawrence, M.D.
 Levin, Carol B., M.D.
 Levine, Howard B., M.D.
 Levine, Susan S., M.S.S., L.C.S.W.
 Levy, Steven T., M.D.
 Lhulier, Joanna, Psy.D.
 Lichtenberg, Eva F., Ph.D.
 Lichtenberg, Joseph D., M.D.
 Litowitz, Bonnie E., Ph.D.
 Longhofer, Jeffrey L., Ph.D., L.I.S.W.
 Luepnitz, Deborah, Ph.D.

PROGRAM PARTICIPANTS

M

MacCourt, Duncan, J.D., M.D.
MacVicar, Katherine, M.D.
Madden, Judy L., Ed.D.
Marcus, Eric R., M.D.
Mathis-O-Melia, Amberlyn, M.A.
McLaughlin, James T., M.D.
McWilliams, Nancy, Ph.D.
Mendelson, Cynthia N., Ph.D.
Meyer, Jeffrey, M.D.
Meyer, Jon, M.D.
Michels, Robert, M.D.
Miller, Elizabeth A., M.S.W.
Moritz, K. Lynne, M.D.
Morrison, Andrew P., M.D.
Moses, Lizbeth, Ph.D.
Mosher, Paul W., M.D.
Moss, Donald B., M.D.
Munich, Richard L., M.D.

N

Nason, Jeffrey D., M.D.
Nayar, Monisha C., Ph.D.
Nosek, Brian, Ph.D.
Nover, Aimee, Ph.D.

O

Ochsner, Kevin, Ph.D.
Olesker, Wendy, Ph.D.
Orbison, David V., Ph.D.
Orgel, Shelley, M.D.
Ostow, Mortimer, M.D.

P

Palmer, Jonathan, M.D.
Paniagua, Cecilio, M.D.
Park, Sandra W., M.D.
Parker, Judith, Ph.D.
Paulsen, Randall H., M.D.
Pearlman, Diane, L.I.C.S.W.
Peebles-Kleiger, Mary Jo, Ph.D.
Pender, Vivian Blotnick, M.D.
Phillips, Sidney H., M.D.
Plotkin, Frieda, Ph.D.

Poland, Warren S., M.D.
Polansky, Marcia, M.S.W., Sc.D.
Pollack, Alan, M.D.
Pomeroy, E. Lisa, Ph.D.
Portuges, Stephen H., Ph.D.
Pyles, Jim.

R

Rangell, Leo, M.D.
Rashkin, Esther, Ph.D., L.C.S.W.
Reed, Gail S., Ph.D.
Reeves, Justine Kalas, Psy.D.
Reiser, Morton F., M.D.
Rodgers, Renee D., M.S.W.
Rosenbaum, Arthur L., M.D.
Roskos, S. Richard, M.D.
Ross, Donald, M.D.
Roughton, Ralph E., M.D.
Rowe, Denise, B.A.
Rubin, Samuel E., M.D.
Ruttenberg, Bertram A., M.D.

S

Safran, Jeremy D., Ph.D.
Sagi, George A., M.D.
Savage, Charles, M.D.
Scharff, David E., M.D.
Scheftel, Susan, Ph.D.
Schwaber, Paul, Ph.D.
Schwartz, Murray, Ph.D.
Seidel, Rachel, M.D.
Seligman, Stephen, D.M.H.
Serruya-Green, Gabriella, Psy.D.
Shannon, Jennifer M., M.D.
Share, Lynda, Ph.D.
Shedler, Jonathan, Ph.D.
Sherkow, Susan P., M.D.
Sherwin, Martin J.,
Shill, Merton A., Ph.D.
Shopper, Moisy, M.D.
Silverman, Doris K., Ph.D.
Silverman, Martin A., M.D.
Singletary, William M., M.D.
Sklarew, Bruce H., M.D.
Skorczewski, Dawn M., Ph.D.

PROGRAM PARTICIPANTS

Skulstad, John, M.D.
Sloate, Phyllis L., Ph.D.
Smith, Henry F., M.D.
Smolen, Bonnie, Ed.D.
Snyder, Elise W., M.D.
Sosnik, Rogelio A., M.D.
Spira, Lucille, Ph.D., C.S.W.
Stein, Dean K.
Stein, Helen B., Ph.D.
Stern, Jeffrey, Ph.D.
Subrin, Mayer, M.D.
Sugarman, Alan, Ph.D.
Summers, Frank, Ph.D.

T

Tanenbaum, Carol, Ph.D., M.F.T.
Tasini, Miriam, M.D.
Tobin, Arnold D., M.D.
Tucker, Sara S., M.D.
Twentyman, Scott S., M.D.

V

von Raffay, Anita, Ph.D.

W

Waldron, Sherwood, Jr., M.D.
Walker, Sandra C., M.D.
Wallwork, Ernest, Ph.D.
Warren, Jane, Ph.D.
Warren, Peggy E., M.D.
Waugaman, Richard M., M.D.
Weisberg, Louis W., M.D.
Wepman, Barry J., Ph.D.
Wheeler, Jason A., Ph.D.
Wheelis, Joan, M.D.
Whipple, John R., M.D.
White, Robert S., M.D.
Williams, Susan L., Ph.D.
Wurmser, Leon, M.D.

Y

Yanof, Judith A., Ph.D.
Young, Barbara, M.D.

Z

Zeitner, Richard M., Ph.D.
Zerbe, Kathryn J., M.D.
Ziegler, Mark E., Ph.D.
Zimmer, Richard B., M.D.
Zinner, John, M.D.

SUBMISSIONS GUIDELINES

PROGRAM SUBMISSIONS GUIDELINES

*For format descriptions, please see
A GUIDE TO THE SCIENTIFIC PROGRAM
AND MEETING REGISTRATION*

Address correspondence for all program submissions to:

Glen O. Gabbard, M.D., Chair, Program Committee
The American Psychoanalytic Association
309 East 49th Street
New York, NY 10017
(212) 752-0450, X21

DISCUSSION GROUPS

**Deadline is May 1 for the Winter (January) Meeting
December 1 for the Annual (June) Meeting**

Discussion group proposals must be submitted in writing (two pages maximum, two copies). Decisions concerning new discussion groups are made based upon how subject matter relates to what is already taken up in existing groups, and on space availability.

SCIENTIFIC PAPERS

**Deadline is May 1 for the Winter (January) Meeting
December 1 for the Annual (June) Meeting**

NEW GUIDELINES!

Email to deder@apsa.org, Debra L. Eder, Scientific Program and Meetings Director, 212-752-0450, x21.

Submissions are done electronically, documents in Microsoft Word (not PDF format). Send one blind paper, with all references to the author deleted. The first page of each manuscript must show only the author's name, address, phone number and the title of the paper. The author's name should not appear on any subsequent page. The email subject line should state type of submission (scientific or pre-circulated paper) and for which meeting. Scientific Papers (for oral presentation) must be no longer than 22 pages, double-spaced. Pre-circulated papers, forty pages maximum, are considered for pre-circulation and small group discussion. For both formats, please include an abstract of 250 words or less.

All manuscripts are distributed anonymously to three referees. Evaluations are integrated by a subcommittee chair who makes a recommendation for acceptance or rejection. If a paper is accepted for the meeting, the Journal of the American Psychoanalytic Association (JAPA) has right of first consideration. The paper cannot have been accepted or be under consideration for publication by another journal. JAPA submissions must be done separately. Contact Lynn Cullen, (404)727-0397 or japa@listserv.emory.edu for instructions.

PANELS

**Deadline is October 1 for the Winter (January) Meeting
March 1 for the Annual (June) Meeting**

Panel proposals must be submitted in writing (two pages maximum, two copies). Each proposal should contain a description of the format and the objective of the panel, as well as names of possible participants (chair, panelists, discussant if there is to be one). **Please note the lead time following the submission of panel proposals. All panel proposals are circulated and voted upon one year in advance by the Program Committee members. For example, a proposal that has been submitted for a Winter (January) Meeting is received in October. It is voted on in January and, if accepted, the panel is held the following January.** When the committee meets, the eight proposals that have received the greatest number of votes are discussed, and from among these a selection is made.

GERTRUDE AND ERNST TICHO MEMORIAL LECTURER

Submissions are being accepted for this new lectureship which comes from a generous grant from the Ernst & Gertrude Ticho Charitable Foundation to honor early- to mid-career analysts.

Send your nominees to Glen O. Gabbard at the APsA National Office no later than January 31, 2007 for future meetings.

SYMPOSIA

**Deadline is May 1 for the Winter (January) Meeting
December 1 for the Annual (June) Meeting**

Please submit a brief (not more than two pages) proposal under the following headings: rationale, program format, suggested speakers. Proposers should understand that: talking points format with 10 to 15 minutes per presentation, no papers read, minimum of 15 minutes for audience participation and the emphasis is on audience interaction.

CALL FOR POSTER SESSION RESEARCH SUBMISSIONS FOR THE AMERICAN PSYCHOANALYTIC ASSOCIATION WINTER 2007 MEETING

The Subcommittee on Posters and Research Symposia invites submissions with conceptual and/or empirical relevance to psychoanalytic theory, technique, aspects of practice, and effectiveness of psychoanalysis. Of special interest is interdisciplinary scholarship addressing research questions in 'neighboring fields' - including developmental and social psychology, family psychology, neuroscience, anthropology, sociology, literary criticism, as well as historical studies, history of ideas and art history. **Deadline: October 15, 2006.**

For further information, please contact:

Linda Goodman, Ph.D. lgoodman@ucla.edu
Stuart Hauser, M.D., Ph.D. stuart_hauser@bcc.harvard.edu
Linda Mayes, M.D. Linda.Mayes@yale.edu

FELLOWSHIP PROGRAM

The 2007-2008 Fellowship program is open to Psychiatrists, Psychologists, Social Workers and Academics.

All applicants, whether or not they receive a Fellowship, are offered the opportunity to be assigned an experienced analyst as a Mentor. Applicants can regularly meet with their Mentors and develop individual programs to further their clinical, scholarly and research interest in psychoanalysis. Winners of the Fellowship will have all their expenses paid for the Annual and Winter Meeting of the Association.

Brochures will be available in September by calling (212) 752-0450, X12, faxing (212) 593-0571 or downloading from www.apsa.org.

CORST SUBMISSIONS GUIDELINES

Committee On Research and Special Training (CORST) announces the 2006 \$1,000 CORST Essay Prize in Psychoanalysis and Culture

The Committee On Research and Special Training (CORST) announces the 2006 \$1,000 CORST Essay Prize in Psychoanalysis and Culture for essays on psychoanalytically informed research in the biobehavioral sciences, social sciences, arts and humanities. The essay should be no more than 30 pages in length and should neither have been published nor submitted for publication. The CORST essay prize is open to anyone regardless of institutional status or affiliation. Applicants are requested to include their name only on the cover letter. The winning essay will be presented at the winter meeting of APsA, and will be reviewed for publication by The Journal of the American Psychoanalytic Association.

Entries are due September 1, 2006.

Essays should be electronically submitted to BOTH:

Vera J. Camden, Ph.D., Chair, The CORST Essay Prize
vcamden@kent.edu
and Dottie Jeffries, Director of Public Affairs, APsA
djeffries@apsa.org



Psychoanalytic Electronic Publishing

In celebration of Freud's 150th birthday,
the **NEW PEP Archive 1 version 6 (1886-2002)**

will be available by **December 2006**

Featuring the **Standard Edition of the Complete Psychological Works of Sigmund Freud (1886-1939)**, searchable and hyperlinked with the full text of the **EIGHTEEN PEP Journals**:

- ◇ Annual of Psychoanalysis (1973-2002)
- ◇ Canadian Journal of Psychoanalysis (1993-2002)
- ◇ Contemporary Psychoanalysis (1964-2002)
- ◇ Gender and Psychoanalysis (1996-2002)
- ◇ International Forum of Psychoanalysis (1992-2002)
- ◇ International Journal of Psychoanalysis (1920-2002)
- ◇ International Review of Psychoanalysis (1974-1992)
- ◇ Journal of the American Academy of Psychoanalysis (1973-2002)
- ◇ Journal of the American Psychoanalytic Association (1953-2002)
- ◇ Neuro-Psychoanalysis (1999-2002)
- ◇ Progress in Self Psychology (1983-2002)
- ◇ Psychoanalytic Quarterly (1932-2002)
- ◇ Psychoanalytic Study of the Child (1945-2002)
- ◇ Psychoanalytic Dialogues (1991-2002)
- ◇ Psychoanalytic Inquiry (1981-2002)
- ◇ Psychoanalytic Psychology (1984-2002)
- ◇ Scandinavian Psychoanalytic Review (1978-2002)
- ◇ Studies in Gender and Sexuality (2000-2002)

AND in addition there are 23 classic psychoanalytic books, PLUS Freud's Complete Correspondence with ABRAHAM, FERENCZI, FLIESS, JONES AND JUNG

PRICES	Individual user	Institutional user
New Customer	\$2,320	\$5,050
New Customer (student)	\$1,700	—
Archive 1v1 Owner	\$1,350	\$4,000
Archive 1v2 Owner	\$1,250	\$3,500
Archive 1v3 Owner	\$1,150	\$3,100
Archive 1v4 Owner	\$880	\$2,800
Archive 1v5 Owner	\$550	\$2,200

EXISTING
INDIVIDUAL
PEP OWNERS AND
STUDENTS CAN
PURCHASE FROM
THE **WEBSITE** AT
A SUBSTANTIAL
DISCOUNT

UNIVERSITY LIBRARIES

The PEP web archive is now available to all students and faculty on your campus on the world wide web, on a site licence basis. For a 1 month **FREE TRIAL** go to www.p-e-p.org.

**FOR FURTHER INFORMATION FOR MAC USERS AND TO ORDER ONLINE VISIT OUR WEBSITE AT:
WWW.P-E-P.ORG**

VISIT WWW.PEP-WEB.ORG TO SEARCH THE PEP ARCHIVE AND THE CURRENT CONTENT OF SOME JOURNALS FREE.

Access to full text requires a subscription.

PEP Sales and Customer Service: US (949) 496 7379 UK +44 7970 701911

j a P a

Including the *JAPA REVIEW OF BOOKS*

**Subscribe Now and
Receive Free Bonus Volumes!**

THE JOURNAL OF THE AMERICAN PSYCHOANALYTIC ASSOCIATION

Special Conference Offer

Subscribe to *JAPA* for 2006 (vol. 54) at the regular individual rate (\$135 per year; \$175 foreign) and receive volume 52 free. Or subscribe for both 2006 and 2007 (\$270 for two years; \$350 foreign) and receive both volumes 52 (2004) and 53 (2005) free!



VOLUME 52 JAPA 2004
52/1 OUR LITERATURE & WRITING
52/2 RESEARCH AND CHILD DEVELOPMENT
52/3 TERRORISM
52/4 TECHNIQUE AND RESEARCH

VOLUME 53 JAPA 2005
53/1 HYPOCRISY, INTUITION, IDENTITY, DEVELOPMENT
53/2 LOVE, SHAME, REVENGE, AND FORGIVENESS
53/3 CLINICAL THEORY
53/4 GENDER

Order Form

- Enter my subscription for *JAPA* 2006 with the free bonus volume 52 for \$135 (\$175 foreign).
 Enter my subscription for *JAPA* 2006 and 2007 with free bonus volumes 52 and 53 for \$270 (\$350 foreign).

Charge my credit card: VISA MASTERCARD AMEX

Card # _____ Exp. Date _____ Signature _____

Check enclosed for \$135.00 \$270.00

(Make checks payable to Mental Health Resources)

Name _____

Address _____

City _____ State/Province _____ Zip Code _____

Country _____

Phone Number _____ Fax _____ E-mail _____

Orders may be mailed, faxed, e-mailed, or phoned to:

JAPA c/o: Mental Health Resources
44 West Bridge Street
Catskill, NY 12414
E-mail: japa.dennis@verizon.net
Toll Free: 877-647-0202
Fax: 518-943-7793

APsA Members not yet subscribing to *JAPA* may call Brian Canty at the National Office (212-752-0450; Ext. 17) for member rates.