



# 106th ANNUAL MEETING

Austin Hilton Hotel | Austin | June 9-11, 2017

Welcome

➔ HISTORIC ➔



TO

# AUSTIN



JOIN US IN

# Texas

## LIVE

## MUSIC CAPITAL

Of the WORLD



### American Psychoanalytic Association

WE'RE GLAD YOU'RE



# JUNE 9-11, 2017

## 106th ANNUAL MEETING




## FINAL PROGRAM



# Frenkel & Company

International Insurance Brokers Est. 1878



*To give real service you must add something which cannot be bought or measured by money—only sincerity and integrity* Douglas Adams

## Frenkel/AIG Psychoanalysts Professional Liability Program

**WE ESTABLISHED OUR SERVICE PLATFORM WITH A HANDSHAKE** between two friends that later evolved into the idea for the FRENKEL/AIG Psychoanalysts Professional Liability/Medical Malpractice Liability Insurance Program.

### **NOW SERVING PSYCHOLOGISTS AND SOCIAL WORK PRACTITIONERS**

The Frenkel & APsaA relationship and the superior insurance product launched in friendship continues to stand the test of time. For over 40 years, Frenkel & Company has proudly delivered our exclusive insurance products to psychoanalysts industry wide including APsaA members. This insurance program and other insurance products are a testament of both our knowledge and our commitment to this prestigious industry.

### **WE APPRECIATE THE OPPORTUNITY TO SERVE YOU.**

**Kenneth C. Hegel, Jr.**  
Executive Vice President / Unit Manager  
Frenkel & Company  
khegel@frenkel.com

**Harborside Financial Center**  
210 Hudson Street Suite #601  
Jersey City, NJ 07311  
T: 201.356.0057 F: 201.356.0055

[www.frenkel.com](http://www.frenkel.com)



Welcome to the

APSA  
A  
M  
E  
R  
I  
C  
A  
N  
P  
S  
Y  
C  
H  
O  
A  
N  
A  
L  
Y  
T  
I  
C  
A  
S  
S  
O  
C  
I  
A  
T  
I  
O  
N

106th ANNUAL MEETING



**Welcome to Austin!** It is the Live Music Capital of the World, and importantly also a place to explore the unique contributions psychoanalysts can make in today's sociopolitical world.

Roughly the size of New York City, Austin has nearly 200 live music venues and an estimated 2,000 artists and bands, including **Weldon Henson & Band** who will be performing at our kickoff party on Thursday night and **The Blues Specialists featuring Mel Davis**

who will be performing at our Saturday night event at Cooper's. On your stroll to the Opening night party, be sure to look up to see if you can spot a wild Monk Parakeet (there are hundreds flying around Austin).

Austin is considered the fastest growing city in America and is known for being a progressive enclave in conservative Texas. This is not a new phenomenon. In 1861 Austin voted overwhelmingly against secession from the Union. Today Austin is considered a "majority-minority city." Appropriate to Austin's spirit, our scientific program opens with "**Race and Borders: American Identity - A Town Hall Discussion**" facilitated by Dorothy E. Holmes, Ricardo Ainslie and Francisco J. Gonzalez. Friday afternoon the University Forum will address the "**Mexico-Texas Borderland: How It Is, How It Should Be**" chaired by Gabriel Ruiz with panelists Raul A. Ramos, Nicole Guidotti-Hernandez and C.J. Alvarez.

Austin was sadly home to the 1st campus shooting in U.S. history in 1966. We have seen too many tragedies since, so I hope you will attend the panel discussion "**A Psychoanalytic Perspective on the Gun in American Culture**" on Saturday afternoon. The panel, moderated by JoAnn Ponder with panelists Patrick Blanchfield, Harold Kudler, and Jeffrey Taxman, will explore why conversations about guns in America have become so hotly divided.

On Friday evening be sure to attend the **Ernst and Gertrude Ticho Memorial Lecture: "The Erotics of Knowing"**, an illuminating presentation by Adele Tutter, and then head over to the post-lecture cocktail reception sponsored by the Ernst and Gertrude Ticho Charitable Foundation. Saturday morning kicks off with the Clinical Plenary: "**On the Compatibility of Religious Orthodoxy and Psychopathology**" with Nancy Kulish as chair and Frank Lachmann as the distinguished presenter.

As with all our Annual Meetings there will be no shortage of stimulating clinical panels, workshops and paper sessions. Attendees will have the additional opportunity to engage in a conversation about the future of psychoanalytic education at the **Open Meeting on Psychoanalytic Education** on Thursday afternoon. APsA members, including candidates, are encouraged to attend. I hope to see you there!

Harriet L. Wolfe, M.D., APsA President

**APSAA THANKS OUR GENEROUS MEETING SPONSORS.  
FIND OUT MORE INFORMATION AT THE SPONSOR  
LITERATURE TABLE IN THE EXHIBIT HALL.**

**Frenkel&Company**  
International Insurance Brokers Est. 1878

**THE  
SIGOURNEY  
AWARD**



**TherapyNotes™** polity

### **What does it mean when a session is marked “Closed”?**

It means that during pre-registration, the maximum enrollment was reached for that particular session. You may only attend if you preregistered. There is no on-site registration for sessions. If a session is not marked closed, you may attend if there is room.

### **Digital Recording Policy**

Portions of the APsaA 106th Annual Meeting will be electronically recorded. By participating in this meeting, APsaA registrants agree that APsaA may electronically copy or audio tape their attendance at and involvement in any program. No individual or entity may electronically record any portion of the APsaA 106th Annual Meeting without prior written consent.

### **Photography Policy**

Photographs of the APsaA 106th Annual Meeting will be taken throughout the program. By attending this conference, APsaA registrants agree their photograph may be used in APsaA member communications and promotional materials.

### **Single-occupancy rest rooms**

For your privacy and comfort, there are single-occupancy rest rooms located on the 4th floor next to meeting rooms 412 and 416A. There is also one on the lobby level.

### **Pet policy**

Dogs and other pets (except for service animals) are not allowed in meeting rooms and the exhibit area during any APsaA meeting.

## **Welcome Newcomers!**

**Feel free to stop an APsaA staff member during the conference if you have any questions.**

**You can easily recognize us by the red ribbon we will be wearing on our name badge.**

## Are you wearing your badge?

Name badges are required to attend all sessions of the scientific program. **Your badge is your passport to attend the program sessions and the only way we can tell you have registered for the meeting.**

Badges must be worn in plain sight to gain access to APsaA's meeting. Individuals who are not wearing their name badge or correct name badge will be asked to properly register for the meeting.

## Continuing Education Credits

**CEC**

In order to obtain CE credits, participants must sign-in to each CE eligible session they attend and must fill out an evaluation form on-line. See your packet insert for more information about the online evaluation form. If you do not see a sign-in sheet at your session, please notify the chair.

## Table of Contents

Registration & Exhibit Hours.....	7
Continuing Professional Education Credit.....	8-9
A Glossary to the Scientific Program .....	10-12
Daily Schedule.....	14-50
Wednesday.....	14
Thursday .....	15
Friday.....	17
Saturday .....	39
Sunday .....	49
APsaA Officers, Program Committee .....	52
APsaA Staff .....	53
Program Participant List .....	54-55

## Social Events

THURSDAY, JUNE 8, 2017

7:00 p.m. – 9:00 p.m. **Opening Night Party with Weldon Henson & Band** (see page 16)

FRIDAY, JUNE 9, 2017

7:15 p.m. – 8:30 p.m. **Ernst and Gertrude Ticho Memorial Lecture Reception** (see page 39)

*Networking events being hosted within the Ticho Reception:*

**Candidates' Spring Party** (see page 39)

SATURDAY, JUNE 10, 2017

7:30 p.m. – 9:30 p.m. **Dinner and Music at Cooper's Sponsored by Frenkel & Company** (see page 48)

SUNDAY, JUNE 11, 2017

8:00 a.m. – 9:00 a.m. **Exhibitor Breakfast for All Participants** (see page 49)

**MEETING ROOM LOCATIONS CAN BE FOUND IN THE YELLOW INSERT IN THE MIDDLE OF THIS PROGRAM.**

The Austin San Antonio Psychoanalytic Society, the Center for Psychoanalytic Studies in Houston and the Dallas Psychoanalytic Center warmly invite you to kick off the 106th Annual Meeting at the...

# OPENING NIGHT PARTY

Open to all APsaA meeting participants  
With Food, Music, and Dancing



**Texas Two-Step lessons  
with Beth Coffey**



**Music by Weldon  
Henson & Band**

**Location:** The Palm Door on Sabine  
(4<sup>th</sup> and Sabine Sts., one block from the Hilton Hotel)

**Date:** Thursday, June 8, 2017

**Time:** 7:00 p.m. - 9:00 p.m.

Music and dance instruction graciously sponsored  
by the Mary Sigourney Award Trust

[sigourneyaward.org](http://sigourneyaward.org)

# Registration & Exhibits

*Registration and exhibits will be located on the 4th Floor.*

## **TUESDAY, JUNE 6**

Registration ..... 8:00 a.m.-5:00 p.m.

## **WEDNESDAY, JUNE 7**

Registration ..... 8:00 a.m.-5:00 p.m.

## **THURSDAY, JUNE 8**

Registration ..... 8:00 a.m.-5:00 p.m.

## **FRIDAY, JUNE 9**

Registration ..... 8:00 a.m.-6:15 p.m.

Exhibits ..... 8:30 a.m.-6:15 p.m.

## **SATURDAY, JUNE 10**

Registration & Exhibits ..... 8:30 a.m.-5:30 p.m.

## **SUNDAY, JUNE 11**

Registration & Exhibits ..... 8:30 a.m.-9:30 p.m.

## **106th ANNUAL MEETING EXHIBITORS/ADVERTISERS**

### **American Board of Psychoanalysis**

*See page 59.*

### **Association Book Exhibit**

9423 Old Mt. Vernon Road  
Alexandria, VA 22309  
Phone: (703) 619-5030

### **Frenkel & Company**

Harborside Financial  
Center  
210 Hudson Street  
Suite N#601  
Jersey City, NJ 07311  
Phone: (201) 356-0057  
frenkel.com  
*See inside front cover.*

### **Guilford Press**

*See page 56.*

### **IPBooks**

*See page 60.*

### **The Menninger Clinic**

12301 Main Street  
Houston, TX 77035  
Toll Free: (800) 351- 9058  
menningerclinic.com

### **Psychoanalytic Electronic Publishing**

*See page 61.*

### **SAGE Publishing**

2455 Teller Road  
Thousand Oaks, CA 91320  
Phone: (805) 499-0721  
sagepublishing.com

### **TherapyNotes**

630 Fitzwatertown Rd,  
Suite A4  
Willow Grove, PA, 19090  
Phone: (215) 658-4550  
therapynotes.com  
*See inside back cover.*

### **Yellowbrick**

*See pages 57 and 59.*

# Continuing Professional Education Credit

## STATEMENT OF OBJECTIVES

The scientific sessions of the American Psychoanalytic Association's meetings are intended to bridge the practice gaps in the professional knowledge of attendees by exploring new and recent developments in research, theory, technique, clinical knowledge and by offering opportunities for the review of essential psychoanalytic knowledge. These sessions are designed for the continuing education of mental health professionals, including psychiatrists, psychologists, social workers, other mental health professionals; professionals-in-training, and master's level students; as well as post-doctoral mental health clinicians, nurses, teachers, professionals and academics in mental health and non-mental health disciplines.

This meeting offers a series of panel discussions, plenaries, symposia, discussion groups, clinical workshops, scientific papers, clinical presentations, and special programs for students including seminars, courses, and forums dedicated to professionals-in-training on topics of importance to psychoanalysis that have been designed to increase professional competence.

## CONTINUING PROFESSIONAL EDUCATION CREDITS

### Physicians

The American Psychoanalytic Association is accredited by the Accreditation Council for Continuing Medical Education to provide continuing medical education for physicians.

The American Psychoanalytic Association designates this Live Activity for a maximum of 17.5 AMA PRA Category 1 Credit(s)<sup>TM</sup>. Physicians should claim only the credit commensurate with the extent of their participation in the activity.

### Psychologists



The American Psychoanalytic Association is approved by the American Psychological Association to sponsor continuing education for psychologists. The American Psychoanalytic Association maintains responsibility for this program and its content.

### MCEP Credits for California Psychologists

The California Psychological Association Accrediting Agency accepts credits earned from American Psychological Association-approved sponsors (the American Psychoanalytic Association is an APA approved sponsor). California-licensed psychologists are, however, required to directly report the courses they have taken with APA sponsors. For information about the MCEP Credit Reporting Form, go to the web site at [www.calpsychlink.org](http://www.calpsychlink.org) then click on the Accrediting Agency button.



## National Association of Social Workers (NASW)

This program is Approved by the National Association of Social Workers (Approval № 886504845) for of 17.5 Clinical Social Work continuing education contact hours.

**New York State Social Workers** American Psychoanalytic Association, Inc. SW CPE is recognized by the New York State Education Department's State Board for Social Work as an approved provider of continuing education for licensed social workers №0186

**New York State Licensed Psychoanalysts** American Psychoanalytic Association, Inc. is recognized by the New York State Education Department's State Board for Mental Health Practitioners as an approved provider of continuing education for licensed psychoanalysts. №P-0013

### IMPORTANT DISCLOSURE INFORMATION FOR ALL LEARNERS:

**None of the planners and presenters of this CME program have any relevant financial relationships to disclose unless specifically noted.**



*Bats emerging from the Ann W. Richards Congress Avenue Bridge.*

# A Glossary to the Scientific Program

**These Sessions are Eligible for Continuing Professional Education Credit Unless Otherwise Noted**

## **OPENING SESSION: RACE AND BORDERS: CRISIS IN CONTEMPORARY AMERICAN IDENTITY — A TOWN HALL DISCUSSION**

Friday..... 9:00 a.m. - 12:00 p.m.

The opening general session is a moderated town hall discussion which will include extensive participation from the audience.

## **SYMPOSIA**

Friday.....1:30 p.m. - 3:30 p.m.

Saturday..... 2:00 p.m. - 4:00 p.m.

This format explores the interface between psychoanalysis, society and related disciplines. Many attempt to demonstrate how psychoanalytic thinking can be applied to non-psychoanalytic settings.

## **CLINICAL CONFERENCES FOR RESIDENTS, PSYCHOLOGY AND SOCIAL WORK TRAINEES, AND STUDENTS, PRESENTED BY APSAA FELLOWS**

Friday.....1:30 p.m. - 3:30 p.m.

..... 3:45 p.m. - 5:45 p.m.

Saturday..... 2:00 p.m. - 4:00 p.m.

Sunday..... 9:00 a.m. - 11:00 a.m.

Four sessions directed to psychiatric residents, psychology and social work students but open to all registrants. The format is a lecture on a particular topic by the designated faculty member, followed by a case presentation by a participant in the APSAA Fellowship Program.

## **CONVERSATION WITH A DISTINGUISHED ANALYST**

Friday.....1:30 p.m. - 3:30 p.m.

A distinguished analyst is invited to meet with participants and candidates to discuss topics that are relevant to psychoanalytic training.

## **COMMITTEE SPONSORED WORKSHOPS**

Friday.....1:30 p.m. - 3:30 p.m.

..... 3:45 p.m. - 5:45 p.m.

Saturday..... 2:00 p.m. - 4:00 p.m.

Sponsored by a standing committee of the American Psychoanalytic Association, these workshops emphasize the exchange of ideas and the demonstration and application of techniques based on the mission statement of the committee.

## DISCUSSION GROUPS

Friday.....1:30 p.m. - 3:30 p.m.  
..... 3:45 p.m. - 5:45 p.m.  
Saturday..... 2:00 p.m. - 4:00 p.m.

Permits a small number of participants to discuss a topic of mutual interest. Discussion Groups meet regularly at bi-annual meetings. This continuity offers the opportunity to build collaborations with colleagues nationally and internationally. New participants are welcome to each group.

## UNIVERSITY FORUM

Friday.....3:30 p.m. - 6:00 p.m.

Psychoanalysts engage with academic presenters for a dialogue across disciplines.

## CANDIDATES' COUNCIL PSYCHOANALYTIC PAPER PRIZE AND WRITING WORKSHOP

Friday..... 3:45 p.m. - 5:45 p.m.

The Candidates' Council Psychoanalytic Paper Prize is awarded annually to the best paper by a candidate on a topic of psychoanalytic interest. The Writing Workshop will explore how to write a successful paper.

## TWO-DAY CLINICAL WORKSHOPS

Friday..... 3:45 p.m. - 5:45 p.m.  
Saturday..... 2:00 p.m. - 4:00 p.m.

Demonstrates and explores the specific manner in which a distinguished psychoanalyst listens to clinical material and conceptualizes process and technique.

## ERNST AND GERTRUDE TICHO MEMORIAL LECTURE

Friday.....6:00 p.m. - 7:15 p.m.

The Ernst and Gertrude Ticho Memorial Lecture is given by an early to mid-career analyst who is currently making contributions to psychoanalysis and shows promise of making significant future contributions to psychoanalytic science, practice, and thought. The lecture is supported by a generous grant from the Ernst and Gertrude Ticho Charitable Foundation.

## CLINICAL PLENARY ADDRESS

Saturday.....9:00 a.m. - 12:00 p.m.

Major addresses by outstanding psychoanalysts or other professionals.

*continued*

**MEET THE AUTHOR**

Saturday ..... 2:00 p.m. - 4:00 p.m.

Authors of recent books of psychoanalytic interest discuss work with colleagues in panel format.

**PANELS**

Saturday ..... 4:30 p.m. - 6:30 p.m.

Sunday ..... 9:00 a.m. - 11:00 a.m.

These panels will bring together nationally recognized psychoanalysts to present papers on clinical and theoretical topics. Active interchange between panelists and the audience is encouraged.



SAVE THE DATE

APsAA  
AMERICAN  
PSYCHOANALYTIC  
ASSOCIATION

2018 NATIONAL  
MEETING

New York Hilton | New York City | February 14-18



# DAILY SCHEDULE

## Wednesday, June 7, 2017

**8:30 A.M. – 2:00 P.M.**

**ADMINISTRATIVE MEETING:  
BOARD ON PROFESSIONAL STANDARDS (BOPS)**

*8:30 a.m. – 11:30 a.m. – (BOPS) Morning Session*

*Lunch Break*

*1:00 p.m. – 2:00 p.m. – (BOPS) Afternoon Session*

APsaA's Board on Professional Standards (BOPS) is responsible for establishing and maintaining standards for psychoanalytic education and clinical training in APsaA-approved psychoanalytic training institutes. BOPS consists of two representatives from each approved or provisionally approved training institute and one representative from each approved or provisionally approved new training facility for the teaching of psychoanalysis recognized by the Association. The Board on Professional Standards meeting is open to any member of the Association except when there is a need for BOPS to be in executive session.

**2:30 P.M. – 4:30 P.M.**

**OPEN MEETING ON PSYCHOANALYTIC EDUCATION**

All APsaA members interested in psychoanalytic education, including candidates, are welcome to attend this meeting. Information about education within APsaA-affiliated training programs and liaisons to external regulatory bodies will be shared and questions answered.

# DAILY SCHEDULE

**Thursday, June 8, 2017**

**8:00 A.M. – 4:00 P.M.**

**ADMINISTRATIVE MEETING:  
EXECUTIVE COUNCIL**

*8:00 a.m. – 12:00 p.m. – Executive Council Morning Session*

*Lunch Break*

*1:30 p.m. – 4:00 p.m. – Executive Council Afternoon Session*

APsaA's Board of Directors, known as the Executive Council, is responsible for the management of the affairs and business of the association. The Executive Council is comprised of the association's officers, eight nationally elected Councilors-at-Large, and councilors representing each affiliate society of the association, as well as each affiliate and affiliated study group. The Executive Council meeting is open to any member of the association except when there is a need for the council to be in executive session.

**1:00 P.M. – 5:00 P.M.**

**ADMINISTRATIVE MEETING:  
CANDIDATES' COUNCIL**

*Note: Candidates pre-registered to participate in the Travel Scholarship are required to attend this meeting.*

Please join your candidate colleagues from around the country. You will meet the Candidates' Council officers and committee chairs, and hear from various guest speakers from APsaA. The Candidates' Council meeting serves as an orientation for candidates to the many opportunities available for involvement in APsaA (e.g., meeting sessions, committees, work groups, programs, clinical presentations, funds/prizes, etc.). Meet and network with fellow candidates. Following brief reports from Candidates' Council officers and committee chairs, there will be a roundtable discussion among candidate colleagues focusing on matters of particular relevance to candidates, including, but not limited to, creating and keeping control cases, forging an analytic identity, navigating supervision and progression committees, making the most of APsaA meetings, and maximizing your analytic training experience. Let the Candidates' Council serve as your gateway into APsaA, the national meetings, networking with colleagues, and the many rewarding opportunities to involve yourself in the national organization.

THURSDAY

# DAILY SCHEDULE

4:30 P. M. – 5:30 P. M.

**ADMINISTRATIVE MEETING:  
NORTH AMERICA AND THE WORLDWIDE IPA**

The North American representatives on the IPA Board and the President of the IPA invite all North American psychoanalysts to join in a conversation on how we can work together for the benefit of local, regional and worldwide psychoanalysis.

7:00 P.M. – 9:00 P.M.

**SOCIAL EVENT:  
OPENING NIGHT PARTY WITH WELDON HENSON & BAND**

**Location: The Palm Door on Sabine  
(4th and Sabine Sts., one block from the Hilton Hotel)**

The Austin San Antonio Psychoanalytic Society, the Center for Psychoanalytic Studies in Houston and the Dallas Psychoanalytic Center invite all participants to this opening night party. Join your colleagues in a festive evening of food, music, and dancing. Enjoy a cash bar and food before taking a complimentary two-step lesson with celebrated instructor Beth Coffey. Weldon Henson and his band will be performing their unique blend of current and classic country all evening. Music and dance instruction graciously sponsored by the Mary Sigourney Award Trust, [sigourneyaward.org](http://sigourneyaward.org). (See page 6)

THURSDAY



# DAILY SCHEDULE

**Friday, June 9, 2017**

**8:00 A.M. – 8:45 A.M.**

**ADMINISTRATIVE MEETING: BUSINESS MEETING OF MEMBERS**

Chair: Harriet L. Wolfe, M.D., President (San Francisco, CA)

The Meeting of Members is an opportunity for all APsaA members to learn about current activities of the Association. All registrants are encouraged to attend.

Don't forget to vote.

If you did not vote electronically or by mail before the 106th Annual Meeting, onsite voting will be available at the Meeting of Members from 7:30 a.m. to 8:00 a.m.

**9:00 A.M. – 12:00 P.M.**

**OPENING SESSION: RACE AND BORDERS:  
CRISIS IN CONTEMPORARY AMERICAN IDENTITY  
— A TOWN HALL DISCUSSION**

Moderator: Dorothy E. Holmes, Ph.D., ABPP (Bluffton, SC)

Panelists: Ricardo Ainslie, Ph.D.\* (Austin, TX)

Francisco J. González, M.D.\* (San Francisco, CA)

*Note: This program is intended to satisfy the requirements of those states that require CE/CME credits in the area of cultural competency for license renewal, but the final judgment for such qualification is made by each state's board.*

This session is a moderated town hall discussion which will include extensive participation from the audience. The discussion will be moderated by senior psychoanalyst Dorothy Holmes, who for years has contributed to our understanding of race. Dr. Francisco González from San Francisco, California and Dr. Ricardo Ainslie from Austin, Texas, both experienced psychoanalytic thinkers and teachers, will offer brief preliminary comments framing questions for discussion. The audience will then be invited to participate, followed by small group discussion. Finally, the larger group will reconvene to hear concluding comments from the panel.

The following framing questions will guide the discussion:

- As Americans and as psychoanalysts, how do we regard and address our complex multiplicity of identities?

*continued*

# DAILY SCHEDULE

## 9:00 A.M. – 12:00 P.M. CONTINUED

- When there is a collapse of social containers, how do we address the dissociation that follows the dislocation, the disillusionment, and despair?
- What makes us vulnerable to hate and envy? How does hate erupt? What makes a peacekeeper (policeman, for example) turn into a murderer? Even with lofty ideals, how is it that base tendencies emerge?
- What is the role of wealth in our society, the role of privilege among us? What makes people satisfied with their lives?

After participating in this discussion participants will be able to: 1) Describe the role of social containers and their disruption in psychological life; 2) Discuss the role of privilege and wealth in psychic life. **CEC: 3**

## 12:00 P.M. – 1:30 P.M.

### LUNCH BREAK

## 1:30 P.M. – 3:30 P.M.

### SYMPOSIUM I: I AM AN(OTHER)

Chair &

Presenter: Carlos Almeida, M.D. (New York, NY)

Presenter: Phoebe Cirio, M.S.W., L.C.S.W. (Saint Louis, MO)

Presenter &

Discussant: Aisha Abbasi, M.D. (West Bloomfield, MI)

This Symposium will explore the sense of “otherness,” and the borders established around that state of being: the state of being an “other,” or one that is different or distinct from one already known about, as well as the state of being “another,” or one that is similar to the other that is already known about. The goal would be understand how these states are impacted both within the analytic setting, as well as applied to extra-analytic settings (with discussion topics to include issues related to Candidacy, and the current political climate).

After participating in this discussion participants will be able to: 1) Explain the importance of recognizing self/other states; 2) Apply the aforementioned states to analytic as well as extra-analytic settings.

**CEC: 2**

# DAILY SCHEDULE

1:30 P.M. – 3:30 P.M. CONTINUED

## CLINICAL CONFERENCE #1 FOR RESIDENTS, PSYCHOLOGY AND SOCIAL WORK TRAINEES, AND STUDENTS, PRESENTED BY APSAA FELLOWS: DEMONS AND NAIL SALONS: THE CONSTRUCTION OF IDENTITY IN SECOND GENERATION IMMIGRANTS

Chair: Petra Pilgrim, M.D.\* (Houston, TX)  
Presenter: Jennifer Harris, M.D.\* (Brookline, MA)  
Discussant: Mary Margaret McClure, D.M.H. (Mill Valley, CA)

*Note: This program is intended to satisfy the requirements of those states that require CE/CME credits in the area of cultural competency for license renewal, but the final judgment for such qualification is made by each state's board.*

First generation immigrants often relate to their adopted country very differently than their children do. The first generation often guards their cultural identity and maintains fantasies of return, yet struggles with feelings of alienation. The second generation inherits these tensions, but with their familiarity with language and culture, assimilates much more readily. This session will explore the issues that arise in the children of immigrants: the role of family duty and guilt, assimilation and cultural identity, the disruption of the family hierarchy, and the desire for home and to belong. These themes will be explored through a case study of an Asian-American woman struggling with violent obsessions and the compulsion to pray, with a multi-generational struggle with interracial assimilation.

After attending this session, participants should be able to: 1) Describe individual and inter-family conflicts particular to first and second generation immigrants; 2) Apply a deeper psychodynamic understanding of the process of acculturation and assimilation to their own clinical work. **CEC: 2**

## CONVERSATION WITH A DISTINGUISHED ANALYST: DR. LEE JAFFE

Chair: Valerie Golden, J.D., Ph.D. (Minneapolis, MN)  
Presenter: Lee Jaffe, Ph.D., President-Elect (La Jolla, CA)

Dr. Jaffe will give an overview of his experiences with psychoanalytic education at the local, national, and international levels; clinical practice; certification; becoming a Training Analyst; writing for professional publications; progressing in one's psychoanalytic

*continued*

# DAILY SCHEDULE

1:30 P.M. – 3:30 P.M. CONTINUED

career; and becoming active in governance of professional organizations, among other select topics. This will be followed by a question and answer session in which attendees will have the opportunities to ask about matters relevant to their own careers, interests, and concerns. All are welcome.

After participating in this discussion participants will be able to: 1) Consider career opportunities in psychoanalytic education, credentialing, clinical practice, professional writing, and the governance of professional organizations; 2) Assess their own career trajectories by selecting those opportunities most relevant to their individual professional interests and professional ambitions.

**CEC: 2**

## COMMITTEE SPONSORED WORKSHOP 1: TEACHING ABOUT ANALYTIC CASE WRITING

Chair: Stephen B. Bernstein, M.D. (Chestnut Hill, MA)

Chair &

Presenter: Harvey Schwartz, M.D. (Philadelphia, PA)

Co-chair: Earle Baughman, M.D. (Alexandria, VA)

This workshop will discuss teaching and writing about the analytic process. Harvey Schwartz, M.D., the immediate past chair of APsaA's Committee on Certification, will lead the attendees in the discussion of a specimen analytic case report. The group will work together to examine the analytic core competencies which will be distributed at the meeting. Attendees will evaluate the writing about an analytic treatment and how the writing represents the analyst's experience and reflections on the process, and the way in which the writing fosters or impedes the reader's understanding of the writer's analytic work. Attendees are often involved in teaching analytic writing or are themselves writing about their analytic work. They may be preparing to apply for certification.

After attending this session, participants should be able to: 1) Compare various aspects of analytic process writing that have been used in the evaluation of an analyst's analytic case reports by the Committee on Certification; and 2) Describe factors in case writing that have fostered or impeded the evaluation of the analyst's work.

**CEC: 2**

# DAILY SCHEDULE

1:30 P.M. – 3:30 P.M. CONTINUED

## **COMMITTEE SPONSORED WORKSHOP 2: WOMEN AND PSYCHOANALYTIC TRAINING: QUESTIONS, CHALLENGES AND OPPORTUNITIES: WOMEN IN/SEEKING PSYCHOANALYTIC TRAINING**

Chair: Joanne E. Callan, Ph.D. (Solana Beach, CA)

This ongoing workshop, which is characterized by energetic discussion, is open to all with interest. It is offered to encourage exploration of questions, challenges, and opportunities relevant for women in or seeking psychoanalytic training. It will focus on professional and personal issues that arise in entering and completing training and also in various practice contexts, including boundary and economic challenges, balancing personal and family life with training, and ethics.

After attending this session, participants should be able to: 1) Describe different training paths or options for women in or seeking psychoanalytic training; 2) Describe strategies for women as related to boundary crossings and boundary violations in professional training and practice. **CEC: 2**

## **COMMITTEE SPONSORED WORKSHOP 3: COLLEAGUE ASSISTANCE: ASSISTANCE COMMITTEES AND MORE**

Chair: Audrey Kavka, M.D. (Oakland, CA)

Colleague assistance takes place in our communities in both formal and informal ways. Psychoanalyst Assistance Committees (PACs) face complex challenges including community distrust and painful contact with colleagues in distress. What resources are available for those involved in colleague assistance? What about issues of wellness and prevention? The Committee on Colleague Assistance offers this workshop as an open forum for participants to share questions, concerns, expertise, and experience with each other.

The workshop program is informal. It begins with introductions and the raising of questions and issues from those attending. In this way, we prioritize what is pertinent to those attending. Vignettes to work through together will be available if there is enough time and interest. The workshop is open to all.

After attending this session, participants should be able to: 1) Explain and employ psychoanalytic concepts relevant to colleague

*continued*

# DAILY SCHEDULE

1:30 P.M. – 3:30 P.M. CONTINUED

assistance activities; 2) Apply the experience of other PACs to their own local PAC work. **CEC**: 2



## DISCUSSION GROUP 1: ALTERED STATES OF AWARENESS

Co-chairs &

Presenters: Fonya Lord Helm, Ph.D., ABPP (Virginia Beach, VA)  
Maurine Kelber Kelly, Ph.D. (Silver Spring, MD)

How do people find out information that seems to be impossible to discover and may be accessed through paranormal means? Such knowledge is often ignored and dismissed, as formulated by the concept of latent inhibition. Why is unusual knowledge that may be paranormal often a complex combination of truth and error? What, if any, is the relevance of dissociation and hypnotic trance states to knowledge that appears as paranormal? The continuum of dissociation ranges from very common mild dissociation that manifests as different self-states on one end all the way through to severe dissociation involving trance states and different personalities or alters on the other end. We will present historical illustrations and vignettes from clinical work, and we encourage participants to present examples.

After attending this session, participants should be able to: 1) Discuss specific examples of dissociation that may relate to unusual perceptions or knowledge; 2) Describe the concept of latent inhibition and how it facilitates screening out information, especially distracting or disturbing information, that has no immediate consequence. **CEC**: 2

## DISCUSSION GROUP 2: INFANT MENTAL LIFE AND THE DREAM IN PSYCHOANALYSIS

Chair: Bernard W. Bail, M.D. (Beverly Hills, CA)

Co-chair &

Presenter: Loren A. Weiner, Ph.D.\* (Beverly Hills, CA)

Co-chair: Judith Parker, Ph.D.\* (Beverly Hills, CA)

This discussion group focuses on the prenatal origins of pathology in the adult patient as outlined by Dr. Bail's Theory of Imprinting, which describes the phenomenon that occurs very early in the life of a fetus and determines the individual's entire life. Imprinting occurs

*continued*

# DAILY SCHEDULE

## 1:30 P.M. – 3:30 P.M. CONTINUED

when the mother unknowingly and unintentionally projects her unconscious negative feelings about herself into her fetus. The fetus is forced to defend itself against this psychological blow by splitting off the harmful material, thereby changing its personality forever. Dr. Bail has discovered that the dream is the key to illuminating the patient's unconscious struggle with the imprint. The more an imprint can be revealed, the more its power can be diminished, allowing the true nature of the person to emerge.

After attending this session, participants should be able to: 1) Describe Dr. Bail's Theory of Imprinting and how it illuminates prenatal origins of psychopathology; 2) Demonstrate an increased knowledge of working clinically with dream material. **CEC: 2**

### **DISCUSSION GROUP 3: PSYCHOANALYSIS AND PSYCHODYNAMIC PSYCHOTHERAPY: A COMPARATIVE CONSIDERATION OF METHOD, TECHNIQUE, AND THERAPEUTIC ACTION**

Chair: Ralph Beaumont, M.D. (Portland, OR)

Presenters: Lisa Madsen, M.D.\* (Austin, TX)  
Cynthia Playfair, M.D. (Austin, TX)

Discussant: Glen Gabbard, M.D. (Bellaire, TX)

Contrasting psychoanalysis and psychodynamic psychotherapy has been a long established tradition, often emphasizing the limitations of the latter. This has resulted in a gap in the understanding of the two therapeutic processes and the ways they are related to one another. This discussion group will take a different stance toward the exploration of this relationship by examining these two clinical approaches side-by-side. The format will involve two presenters, one providing detailed psychoanalytic session material, the other psychotherapeutic material. A discussant will take up a consideration of the two therapeutic processes, and help facilitate a discussion of them in terms of method, technique, and therapeutic action.

After attending this session, participants should be able to: 1) Describe how clinical concepts of method, technique, and therapeutic action can be used to illuminate clinical material from a psychoanalysis and a psychodynamic psychotherapy; 2) Compare these clinical areas of practice using concepts of method, technique, and therapeutic action in conjunction with examples of clinical material presented during the meeting. **CEC: 2**

# DAILY SCHEDULE

1:30 P.M. – 3:30 P.M. CONTINUED

## DISCUSSION GROUP 4:

“‘MASTER HAROLD’...AND THE BOYS”:

### THE CORROSIVE EFFECTS OF RACISM

Co-chairs: Eva F. Lichtenberg, Ph.D.\* (Chicago, IL)  
Arnold D. Tobin, M.D. (Chicago, IL)

Fugard's play demonstrates how destructive South Africa's apartheid was for all its inhabitants, both whites (masters) and blacks (slaves). One's status in society was determined by their racial identity. Relationships could be inverted as the white child was parented by the black socially ostracized servant. This reversal resulted in extreme regression or addiction along with loss of human feeling toward others. The relationship between whites and blacks manifested much ambivalence along with cruelty, occasional empathy, or even affection, but always underlying shame, guilt, and forms of identification with the aggressor.

After attending this session, participants should be able to: 1) Describe how institutional, rigidly structured social arrangements lead to complex identifications and role models which interfere with more normal development; 2) Analyze how universally imposed double standards of living lead to unconscious shame and guilt with negative consequences for everyone in the society. **CEC: 2**

## DISCUSSION GROUP 5:

HISTORY OF PSYCHOANALYSIS: A DOUBLE HERESY:

### ROLLO MAY BETWEEN FREUD AND CHRISTIANITY

Chair: Peter L. Rudnytsky, Ph.D., L.C.S.W. (Gainesville, FL)  
Presenter: Robert H. Abzug, Ph.D.\* (Austin, TX)  
Discussant: Sandra Buechler, Ph.D.\* (New York, NY)

Rollo May (1909-1994), one of the most important public advocates of psychotherapy in its postwar “golden age,” merged psychological, psychoanalytic, religious, and philosophical insights into a complex understanding of human consciousness in modernity. The presentation, drawn from a forthcoming book, “The Spiritual Odyssey of Rollo May” (Oxford University Press, 2018), focuses on May's use of Freudian and neo-Freudian thought in his particular vision of existential and humanistic psychology. Like Oskar Pfister, May felt a kinship to Freud, the “Godless Jew,” despite his own aspiration to merge psychoanalysis with Christianity and, later, existentialism. Dr. Robert Abzug is Rapoport Regents Chair of

*continued*



# DAILY SCHEDULE

1:30 P.M. – 3:30 P.M. CONTINUED

Jewish Studies and Professor of History and American Studies at the University of Texas. Selected readings will be distributed to those who register for the session.

After attending this session, participants should be able to: 1) Describe the influence of Freudian thought on other major movements of psychology; 2) Discuss the question of religion and psychoanalysis beyond Freud's views as expressed in his major statements on the subject. **CEC: 2**

## **DISCUSSION GROUP 6: CONFIDENTIALITY: CAN WE DRAW SOME CONCLUSIONS FROM THE LITERATURE ON CONFIDENTIALITY?**

Chair: Mia W. Biran, Ph.D. (Cincinnati, OH)

*Note: This program is intended to satisfy the requirements of those states that require CME credits in the area of risk management or medical ethics for medical license renewal, but the final judgment for such qualification is made by each state's medical board.*

This discussion group is designed as a forum for participants to discuss their views and experience with maintaining confidentiality in the dissemination of analytic case material, both in verbal presentations and in publications. The presenter will review recent articles addressing these issue and some contradicting opinions among psychoanalysts about how to guard confidentiality of the clinical cases. Participants will then join with discussing the controversies and sharing their own conflicts during their career when having to present case material. Central topics that will be addressed are: Should we require consent from the patient? Should we disguise all the details about the case? Should we avoid including case material in publications altogether?

After participating in this discussion participants will be able to: 1) Consider the different ethical and clinical aspects of bringing case material in presentations or publications; 2) Discuss in more clear terms their choice of principles guiding dissemination of clinical material. **CEC: 2**

FRIDAY

# DAILY SCHEDULE

1:30 P.M. – 3:30 P.M. CONTINUED

## **DISCUSSION GROUP 7: A PSYCHOANALYTIC APPROACH TO TRANSGENERATIONAL TRAUMA VIA A MULTI-GENERATIONAL, MULTI-SIBLING TREATMENT**

Chair &

Presenter: Louis Roussel, Ph.D. (San Francisco, CA)

The Masonic Center for Youth and Families is a psychoanalytic and family systems services center that treats children, adolescents, and families. This discussion group will focus on the multi-generational treatment of a traumatized family, who presented at first via the family's 8 year old girl. As the treatment progressed, it became apparent that the girl's problems extended to and evolved from other members of her family. What began as a psychoanalysis of the girl evolved into therapy for the family, including the grandparents, individual therapy for the mother, and psychoanalysis for the brother. The discussion will examine these simultaneous treatments with attention paid to overlapping themes and the effects of the multiple therapies. The vicissitudes of the transference, countertransference, and regressions will be discussed.

After attending this session, participants should be able to: 1) Explain the treatment of trauma with a child by addressing trauma as it has been passed down and continues to exist in parents, siblings, and extended family members; 2) Analyze the behavioral manifestations of dysfunction that have existed in a parent and grandparent and how those behavioral emotional problems are displayed in the child.

**CEC**: 2

## **DISCUSSION GROUP 8: APPLYING HISTORICAL AND SOCIAL FACTORS IN CLINICAL PSYCHOANALYSIS**

Co-chairs: Dorothy E. Holmes, Ph.D., ABPP (Bluffton, SC)

Donald B. Moss, M.D. (New York, NY)

Stephen Seligman, D.M.H. (San Francisco, CA)

Presenter: Francisco J. González, M.D.\* (San Francisco, CA)

Social factors infiltrate and structure the psychological lives of individuals and, in turn, their psychoanalyses. Psychoanalysts have often regarded these as secondary, but they present with deep, embedded histories, narratives, and ongoing expressions in many forms. Our conceptual and clinical methods and processes,

*continued*

FRIDAY

# DAILY SCHEDULE

1:30 P.M. – 3:30 P.M. CONTINUED

including our approach to transference and countertransference, will be enriched when we add social, historical, and cultural events and ideologies to our usual analytic approaches to meaning making; clinical outcome may well be enhanced. Built around case presentations, this discussion group will consider a variety of compelling social factors, some common and easily recognized, such as race, class, sexual orientation, and religion and others less obvious, such as the impact of multiple diversities in a person's identity, disability, or political ideology.

After attending this session, participants should be able to: 1) Describe the processes by which historical and social factors might inadvertently be inappropriately excluded from clinical encounters; 2) Use social and historical information in clinical formulations and related therapeutic and analytic. **CEC: 2**

## **DISCUSSION GROUP 9: UNDERSTANDING PRIMITIVE ANXIETIES AND THE NATURE OF THE OBJECT-RELATIONSHIP**

Co-chairs &

Discussants: Kay M. Long, Ph.D. (New Haven, CT)

Lynne Zeavin, Psy.D. (New York, NY)

Presenter: Marianna Adler, Ph.D. (Austin, TX)

This discussion group will provide an opportunity to develop an understanding of those primitive mental states that emerge in all analyses, even with our less disturbed patients. Using Kleinian theory and technique, participants will closely follow clinical material in an effort to explore manifestations of early anxieties and the nature of object relations as they emerge in the transference/countertransference. The focus will be patients who are difficult to reach, patients who are driven to undo the analytic work, and patients whose narcissism makes contact with a live and separate analyst a terrible risk. A group can provide a setting that is essential for the recognition of what is taking place between patient and analyst.

After attending this session, participants should be able to: 1) Compare levels of psychic functioning on a continuum from the more organized to the more disturbed; 2) Demonstrate the analyst's countertransference response to inform analytic interventions.

**CEC: 2**

FRIDAY

# DAILY SCHEDULE

3:30 P.M. – 6:00 P.M.

## UNIVERSITY FORUM: THE MEXICO-TEXAS BORDERLAND: HOW IT'S BEEN; HOW IT SHOULD BE

Chair: Gabriel Ruiz, M.A., L.C.P.C. (Chicago, IL)  
Presenters: Raúl A. Ramos, Ph.D.\* (Houston, TX)  
Nicole Guidotti-Hernández, Ph.D.\* (Austin, TX)  
C.J. Alvarez, Ph.D.\* (Austin, TX)

*Note: This program is intended to satisfy the requirements of those states that require CE/CME credits in the area of cultural competency for license renewal, but the final judgment for such qualification is made by each state's board.*

For almost two centuries, the Mexico-Texas border has had a unique and intense influence on the politics, law enforcement, violence, and social-familial life of both countries. Both countries have expanded political and military force and drug trade has increased. Building of road and transit infrastructure has had a deep impact on both U.S. and Mexican ways of life. Three very knowledgeable historians of the Mexico-Texas border, each Mexican-American, each teaching in Texas, will talk about how these borders function, how they mediate social, cultural, political, and psychological tensions. They will tell about the striking and, often overlooked, borderland history of Mexico and Texas. Borders, borderlands, and borderlines at concrete and symbolic levels invite psychoanalytic inquiry. This program will offer tools for community organizers, academics, and clinicians with an interest in thinking and intervening in borderlands across the globe. This program is open to the public.

After attending this session, participants should be able to: 1) Describe unique present and historical factors that impact individual and communities along borderlands; 2) Assess "otherness" with less projection of hated aspects of the self on to the "other." **CEC: 2.5**

# DAILY SCHEDULE

3:45 P.M. – 5:45 P.M.

## CANDIDATES' COUNCIL PSYCHOANALYTIC PAPER PRIZE AND WRITING WORKSHOP

Chair: Holly Crisp-Han, MD (Houston, TX)  
Author: Steven Baum, Psy.D. (Oakland, CA)  
Title: "The Analyst's Enactments"  
Discussant: Cynthia Lee, Ph.D., J.D. (Austin, TX)

The winner of the semifinalist prize in this year's Candidate Council Psychoanalytic Paper Prize, Dr. Steven Baum from San Francisco, will discuss the highlights of his writing process and present his paper, "The Analyst's Enactments," in which he considers theoretical and clinical perspectives on the phenomena of enactments, common occurrences in our daily work as analysts. Dr. Cynthia Lee, training and supervising analyst from Austin, will lead the group in a discussion of the paper and the themes of enactment, and will also comment more generally on the writing process. Participants will have the opportunity for discussion of enactments and analytic writing in a collegial and informal atmosphere.

After attending this session, participants should be able to: 1) Develop an idea into a psychoanalytic paper in preparation or professional dissemination; 2) Evaluate papers as readers for the Candidates' Council Psychoanalytic Paper Prize and for professional journals.

**CEC: 2**

## CLINICAL CONFERENCE # 2 FOR RESIDENTS, PSYCHOLOGY AND SOCIAL WORK TRAINEES, AND STUDENTS, PRESENTED BY APSAA FELLOWS: CAN THE PATIENT'S DIGNITY BE THE PRICE OF THE END OF THE HIV EPIDEMICS?: A PATIENT-ACTIVIST PERSPECTIVE

Chair: Asli Baykal, Ph.D., LCSW\* (Austin, TX)  
Presenter: Miguel Caballero, M.A.\* (New York, NY)  
Discussant: Francisco J. González, M.D.\* (San Francisco, CA)

From the point of view of the patient-activist, this session will address the relationship between health providers and a person living with HIV in the United States regarding issues such as challenges to discuss intimacy in an unprejudiced way, negotiate treatment and interventions, claim sovereignty over his own body and decisions, question the aggressions of the new international protocols of treatment, discuss contemporary notions of health and cure. Ultimately, this session uses the experience of a person living with

*continued*

# DAILY SCHEDULE

## 3:45 P.M. – 5:45 P.M. CONTINUED

HIV to assess the limits of individual dignity of each patient in the context of an epidemic, and advocate for the extension of strategies of talk treatment to other medical settings.

After participating in this discussion participants will be able to: 1) Assess their own positions regarding the limits of individual dignity of each patient in the context of an epidemic; 2) Discuss how psychotherapy can improve care of people with sexually-transmitted infections. **CEC: 2**

### TWO-DAY CLINICAL WORKSHOP #1: PSYCHOANALYTIC PSYCHOTHERAPY (PART 1)

Chair: Ann Dart, L.C.S.W.\* (Portland, OR)

Presenter: Larisa Jeffreys, M.A., M.N., PMHNP\* (Portland, OR)

Discussant: Cynthia Ellis Gray, M.D. (Portland, OR)

*This is a two-part session. Part 2 will take place on Saturday at 2:00 p.m. Participants are expected to attend both days.*

This clinical workshop, sponsored by APsA's Psychotherapy Department, will focus on psychotherapy process and technique. The workshop will feature a psychodynamic psychotherapist presenting detailed process notes from several sessions and a discussant who will help highlight aspects of the case. After a close reading of the clinical material, the unfolding process will be the main topic of discussion, along with other psychoanalytic principles that come into play in the therapy. Participants will deepen their understanding of how these principles and techniques inform and contribute to the clinical process. An informal and collegial atmosphere will provide ample opportunity for in-depth and interactive group discussion. This program is appropriate for all levels of clinical experience and is open to all.

After attending this session, participants should be able to: 1) Describe several psychoanalytic principles reflected in the clinical material; 2) Explain several psychoanalytic techniques used to effectively deepen the work. **CEC: 2**

# DAILY SCHEDULE

3:45 P.M. – 5:45 P.M. CONTINUED

## **TWO-DAY CLINICAL WORKSHOP #2: WORKSHOP SERIES IN ANALYTIC PROCESS AND TECHNIQUE (PART 1)**

Chair: Sharon Blum, Ph.D. (Los Angeles, CA)  
Discussant: Jay Greenberg, Ph.D. (New York, NY)

*This is a two-part session. Part 2 will take place on Saturday at 2:00 p.m. Participants are expected to attend both days.*

We all know clinical work can be both rewarding and, at times, taxing. Clinicians at all levels of experience need a forum to discuss and elaborate on the underlying thinking that informs the clinician's work. The two-day clinical workshop, because it meets for an extended period of time, allows for a deeper understanding of clinical process. It also allows an active learning approach. There will be an ongoing dialogue between Dr. Greenberg, a leading expert in our field, and the audience. In addition, there will be ample time for participants to share with each other what they consider important aspects of working analytically.

After attending these sessions, participants should be able to: 1) Describe how Dr. Greenberg integrates his theoretical contributions with direct clinical work; 2) Describe how he utilizes clinical data to inform psychoanalytic interventions and how Dr. Greenberg's technique can help their own work. **CEC: 2**

## **TWO-DAY CLINICAL WORKSHOP #3: WORKSHOP SERIES IN ANALYTIC PROCESS AND TECHNIQUE (PART 1)**

Chair: Donald B. Moss, M.D. (New York, NY)  
Presenter: Nisha Shah, M.D. (Decatur, GA)  
Discussant: Alice Jones, M.D. (Berkeley, CA)

*This is a two-part session. Part 2 will take place on Saturday at 2:00 p.m. Participants are expected to attend both days.*

Process notes from psychoanalytic sessions will be presented to the discussant, Dr. Jones. She will address clinical and theoretical issues arising from the presentation. Participants will also have the opportunity to address the material and to engage with our discussant and each other.

After attending this session, participants should be able to: 1) Describe their own clinical/theoretical perspectives as they develop

*continued*

# DAILY SCHEDULE

3:45 P.M. – 5:45 P.M. CONTINUED

and emerge in relation to perspectives brought by our presenter and discussant; 2) Describe ways to contend with the variety of perspectives voiced by the group. **CEC: 2**

## CHILD AND ADOLESCENT TWO-DAY CLINICAL WORKSHOP (PART 1)

Chair: Christine C. Kieffer, Ph.D., ABPP (Chicago, IL)

Presenter: Adriana Crane, L.C.S.W.\* (Houston, TX)

Discussant: Robert Galatzer-Levy, M.D. (Chicago, IL)

*This is a two-part session. Part 2 will take place on Saturday at 2:00 p.m. Participants are expected to attend both days.*

This two-day workshop provides participants with an opportunity to hear extensive analytic case material with commentary by a featured discussant of high acclaim. This June we are fortunate to have an analytic case focusing upon a late adolescent presented by an advanced candidate, Adriana Crane. Robert Galatzer-Levy will discuss the case, and his presentation will include his perspective on non-linear dynamic systems theory, as it pertains both to general development as well as to the development of the process in the analytic dyad. As usual, all participants will have the opportunity to discuss the case with all of the presenters.

After attending this session, participants should be able to: 1) Describe three aspects of late adolescent development; 2) Describe three implications of non-linear dynamic systems theory for general development, for adolescence in particular, and in the process of psychoanalytic work. **CEC: 2**

## COMMITTEE SPONSORED WORKSHOP 4: PRACTICE BUILDING TODAY: GROWING PSYCHOANALYTIC PRACTICE THROUGH CO-CREATING AND SELF-GROWTH: AN EARLY CAREER ANALYST TALKS WITH DR. GLEN GABBARD

Chair &

Moderator: Susan Flinders, Ph.D. (Chelsea, MI)

Presenter &

Discussant: Glen Gabbard, M.D. (Bellaire, TX)

Presenter: Robin Rayford, M.A.\* (Troy, MI)

The core of this program is an emphasis on self-care and continuing growth, including more analysis, ongoing supervision,

*continued*



## Daily Schedule Meeting Room Locations

*In order to obtain Continuing Education credits,  
participants must sign-in to each CE eligible session.*

### Wednesday, June 7

**9:30 A.M. – 2:00 P.M.**

**Administrative Meeting:**  
Board on Professional Standards  
(BOPS)  
SALON C (4TH FLOOR)

**2:30 P.M. – 4:30 P.M.**

**Open Meeting on  
Psychoanalytic Education**  
SALON C (4TH FLOOR)

### Thursday, June 8

**8:00 A.M. – 4:00 P.M.**

**Administrative Meeting:**  
**Executive Council**  
SALON C (4TH FLOOR)

**1:00 P.M. – 5:00 P.M.**

**Administrative Meeting:**  
**Candidates' Council**  
ROOM 406 (4TH FLOOR)

**4:30 P.M. – 6:00 P.M.**

**Administrative Meeting: North  
America and the Worldwide IPA**  
ROOM 414 (4TH FLOOR)

**7:00 P.M. – 9:00 P.M.**

**Social Event:**  
Opening Night Party with Weldon Hen-  
son and Band (Open to all registrants)  
THE PALM DOOR ON SABINE STREET

### Friday, June 9

**8:00 A.M. – 8:45 A.M.**

**Administrative Meeting:**  
**Business Meeting of Members**  
ROOM 414 (4TH FLOOR)

**9:00 A.M. – 12:00 P.M.**

**Opening Session:**  
Race and Borders: Crisis in  
Contemporary American Identity  
SALON A-B (4TH FLOOR)

**1:30 P.M. – 3:30 P.M.**

**Symposium I:**  
I Am An(other)  
ROOM 414 (4TH FLOOR)

**Clinical Conference 1:**  
Demons and Nail Salons  
ROOM 412 (4TH FLOOR)

**Conversation with a  
Distinguished Analyst:**  
Dr. Lee Jaffe  
ROOM 402 (4TH FLOOR)

**Committee Sponsored  
Workshop 1:** Teaching about  
Analytic Case Writing  
BOARDROOM 401 (4TH FLOOR)

**Committee Sponsored  
Workshop 2:** Women and  
Psychoanalytic Training  
BOARDROOM 403 (4TH FLOOR)

**Committee Sponsored  
Workshop 3:** Colleague Assistance  
ROOM 415 A (4TH FLOOR)

## **Fri. continued**

**1:30 P.M. – 3:30 P.M. CONTINUED**

### **Discussion Group 1:**

Altered States of Awareness  
ROOM 410 (4TH FLOOR)

### **Discussion Group 2:**

Infant Mental Life  
ROOM 408 (4TH FLOOR)

### **Discussion Group 3:**

Psychoanalysis and Psychodynamic  
Psychotherapy  
ROOM 406 (4TH FLOOR)

### **Discussion Group 4:**

“Master Harold’...and the Boys”  
ROOM 415 B (4TH FLOOR)

### **Discussion Group 5:**

History of Psychoanalysis  
ROOM 416 B (4TH FLOOR)

### **Discussion Group 6:**

Confidentiality  
ROOM 417 A (4TH FLOOR)

### **Discussion Group 7:**

Transgenerational Trauma  
ROOM 417 B (4TH FLOOR)

### **Discussion Group 8:**

Applying Historical and Social Factors  
in Clinical Psychoanalysis  
ROOM 416 A (4TH FLOOR)

### **Discussion Group 9:**

Understanding Primitive Anxieties  
**CLOSED**  
ROOM 400 (4TH FLOOR)

**3:30 P.M. – 6:00 P.M.**

### **University Forum:**

The Mexico-Texas Borderland: How  
It’s Been; How It Should Be  
SALON D (4TH FLOOR)

## **Fri. continued**

**3:45 P.M. – 5:45 P.M.**

### **Candidates’ Council**

**Psychoanalytic Paper Prize  
and Writing Workshop**  
ROOM 417 B (4TH FLOOR)

### **Clinical Conference 2:**

Patient's Dignity  
ROOM 412 (4TH FLOOR)

### **Two-Day Clinical Workshop 1**

**(Part 1):** Psychoanalytic  
Psychotherapy  
(Chair: Ms. Dart) **CLOSED**  
ROOM 417 A (4TH FLOOR)

### **Two-Day Clinical Workshop 2**

**(Part 1):** Workshop Series in  
Analytic Process and Technique  
(Chair: Dr. Blum) **CLOSED**  
ROOM 406 (4TH FLOOR)

### **Two-Day Clinical Workshop 3**

**(Part 1):** Workshop Series in  
Analytic Process and Technique  
(Chair: Dr. Moss) **CLOSED**  
ROOM 416 B (4TH FLOOR)

### **Child and Adolescent Two-Day Clinical Workshop (Part 1)**

(Chair: Dr. Kieffer)  
ROOM 416 A (4TH FLOOR)

### **Committee Sponsored Workshop 4:**

Practice Building Today  
ROOM 418 (4TH FLOOR)

### **Committee Sponsored**

**Workshop 5:** Ethics  
BOARDROOM 403 (4TH FLOOR)

### **Discussion Group 10:**

Emerging Perspectives on LGBT\*Q  
ROOM 415 A (4TH FLOOR)

### **Discussion Group 11:**

Love, Sex, and the American Psyche  
ROOM 400 (4TH FLOOR)

## Fri. continued

**3:45 P.M. – 5:45 P.M. CONTINUED**

### **Discussion Group 12:**

Psychoanalytic Treatment of Eating Disorders  
ROOM 408 (4TH FLOOR)

### **Discussion Group 13:**

Research on the Relation of Psychoanalysis and Neuroscience  
ROOM 410 (4TH FLOOR)

### **Discussion Group 14:**

The Influence of the Contemporary British Kleinians on Clinical Psychoanalysis  
ROOM 402 (4TH FLOOR)

### **Discussion Group 15:**

Deepening the Treatment  
ROOM 415 B (4TH FLOOR)

**6:00 P.M. – 7:15 P.M.**

### **Ernst and Gertrude Ticho Memorial Lecture and Presentation of Awards:**

Dr. Adele Tutter – “The Erotics of Knowing”  
SALON C (4TH FLOOR)

**7:15 P.M. – 8:30 P.M.**

**Social Event: Ernst and Gertrude Ticho Memorial Lecture Reception**  
EXHIBIT AREA (4TH FLOOR)

**Social Event: Candidates' Spring Party**  
EXHIBIT AREA (4TH FLOOR)

## Saturday, June 10

**9:00 A.M. – 12:00 P.M.**

### **Clinical Plenary Address:**

Dr. Frank Lachmann “On the Compatibility of Religious Orthodoxy and Psychopathology”  
SALON C (4TH FLOOR)

**2:00 P.M. – 4:00 P.M.**

### **Symposium II:**

Class Status within the Psychoanalytic Relationship  
ROOM 414 (4TH FLOOR)

### **Clinical Conference 3:**

Raped by the System  
ROOM 412 (4TH FLOOR)

### **Meet the Author:**

Daphne Merkin  
SALON D (4TH FLOOR)

### **Two-Day Clinical Workshop 1**

**(Part 2):** Psychoanalytic Psychotherapy (Chair: Ms. Dart)  
**CLOSED**  
ROOM 417 A (4TH FLOOR)

### **Two-Day Clinical Workshop 2 (Part 2):**

Workshop Series in Analytic Process and Technique (Chair: Dr. Blum) **CLOSED**  
ROOM 406 (4TH FLOOR)

### **Two-Day Clinical Workshop 3**

**(Part 2):** Workshop Series in Analytic Process and Technique (Chair: Dr. Moss) **CLOSED**  
ROOM 416 B (4TH FLOOR)

### **Child and Adolescent Two-Day Clinical Workshop (Part 2)**

(Chair: Dr. Kieffer)  
ROOM 416 A (4TH FLOOR)

### **Discussion Group 16:**

Psychotherapist Associates Present  
ROOM 402 (4TH FLOOR)

## Sat. continued

**2:00 P.M. – 4:00 P.M. CONTINUED**

**Discussion Group 17:**  
Psychoanalysis and Couple Therapy  
ROOM 415 B (4TH FLOOR)

**Discussion Group 18:**  
Parent Work in Psychoanalysis  
ROOM 415 A (4TH FLOOR)

**Discussion Group 19:**  
Psychoanalytic Perspectives on Opera  
ROOM 408 (4TH FLOOR)

**Discussion Group 20:**  
The Candidate at Work  
ROOM 417 B (4TH FLOOR)

**Discussion Group 21:**  
Ethical Dilemmas in Psychoanalytic  
Institutes  
ROOM 400 (4TH FLOOR)

**Discussion Group 22:**  
Decision-Making in Older Adults  
ROOM 410 (4TH FLOOR)

**4:30 P.M. – 6:30 P.M.**

Panel I: A Psychoanalytic Perspective  
on the Gun in American Culture  
SALON C (4TH FLOOR)

**7:30 P.M. – 9:30 P.M.**

**Social Event:**  
Dinner and Music at Cooper's  
*Visit APsaA's registration desk if you  
wish to purchase a ticket to this event.*

## Sunday, June 11

**8:00 A.M. – 9:00 A.M.**

**Social Event:**  
Exhibitor Breakfast for all Participants  
EXHIBIT AREA (4TH FLOOR)

**9:00 A.M. – 11:00 A.M.**

**Panel II:**  
New Developments and Challenges in  
the Analyst as Group Therapist  
SALON D (4TH FLOOR)

**Clinical Conference 4:**  
"She reminds me of her father"  
ROOM 412 (4TH FLOOR)

# DAILY SCHEDULE

3:45 P.M. – 5:45 P.M. CONTINUED

involvement in the psychoanalytic community, ie. teaching, etc. It is a reconceptualization of the Eitington Model and thinking of the analyst as always a work in progress and always building themselves and their practice. This first session will include an early career analyst having a conversation with a seasoned analyst discussing how self-care and self-development can proceed post psychoanalytic graduation.

After attending this session, participants should be able to: 1) List ways psychoanalysts can engage in self-care and self-development post psychoanalytic graduation and, thus, build psychoanalytic practice; 2) Describe how the ways listed in the first objective can further psychoanalysts caring for themselves and developing themselves while also building psychoanalytic practice. **CEC: 2**

## COMMITTEE SPONSORED WORKSHOP 5: ETHICS

Chair &

Presenter: Peter Kotcher, M.D. (Cincinnati, OH)

**Note: This session does not offer Continuing Education Credit.**

This workshop will provide participants a chance to discuss ethical questions of their choosing with the Chair of the APsA Committee on Ethics.

After attending the session, participants should be able to: 1) Gain an improved understanding of the ethics questions they bring to the workshop; 2) Appreciate the breadth of ethics questions of concern to the group.

FRIDAY

# DAILY SCHEDULE

3:45 P.M. – 5:45 P.M. CONTINUED

## DISCUSSION GROUP 10: EMERGING PERSPECTIVES ON LESBIAN, GAY, BISEXUAL, TRANS\*, AND QUEER: LGBTQ ANALYSTS AS PARENTS: LIVING OUTSIDE THE BOX?

Co-chairs: Susan McNamara, M.D.\* (Middletown, CT)  
Diana E. Moga, M.D., Ph.D. (New York, NY)  
Don Spivak, M.D. (Birmingham, MI)

Presenters: Cary D. Friedman, M.D. (Cambridge, MA)  
Sidney H. Phillips, M.D. (New Haven, CT)

Discussant: Susan L. Donner, M.D. (Woodland Hills, CA)

*Note: This program is intended to satisfy the requirements of those states that require CE/CME credits in the area of cultural competency for license renewal, but the final judgment for such qualification is made by each state's board.*

“We just thought of our lives as very normal. We met, fell in love, moved to Connecticut, built our careers, and then decided we wanted children.” It is well established that the children of LGBTQ parents are not adversely affected by the sexual orientation or gender expression of their parents. But what is it like being an LGBTQ parent? The discussion group will consist of a round table of LGBTQ analysts on the joys and challenges of parenting in a heteronormative world.

(The \* is used metaphorically to capture all the identities that fall outside traditional gender norms.)

After attending this session, participants should be able to: 1) Describe the impact of all types of family relationships on child development; 2) Demonstrate how to foster a social environment in which all children and their families are valued, experience support and recognition, and in which discrimination and prejudice have no place. **CEC: 2**

# DAILY SCHEDULE

3:45 P.M. – 5:45 P.M. CONTINUED

## DISCUSSION GROUP 11:

### LOVE, SEX, AND THE AMERICAN PSYCHE: THE EROTIC TRANSFERENCE AND LOVE OBJECT CHOICE

Co-chair &

Presenter: R. Curtis Bristol, M.D. (Washington, DC)

Co-chair: Stefan Pasternack, M.D. (Delray Beach, FL)

We continue the discussion begun by Sigmund Freud and furthered by contemporary ego psychologists: What is adult romantic love and how is it pre-shadowed by childhood love relationships? The psychodynamics of romance are conflated in many symptomatic presentations for evaluation and treatment. Often the patient's view of the therapist become interwoven with their love narratives past and present. The case of a man entrapped in a love triangle with two women developed an intense erotic infatuation with the analyst. The resolution of this negative Oedipal transference lead to confident sexual identity and successful marriage.

After attending this session, participants should be able to: 1) Assess analytic material for interpretation of the negative Oedipal transference in romantic love conflicts; 2) Demonstrate the analytic technique for making interpretations characterized by erotic and romantic references to the analyst that are rich in the established genetic history of the analysand's life. **CEC : 2**

## DISCUSSION GROUP 12:

### PSYCHOANALYTIC TREATMENT OF EATING DISORDERS AND BODY IMAGE CONCERNS ACROSS THE LIFE CYCLE

Chair: Kathryn J. Zerbe, M.D. (Portland, OR)

Presenter: Tom Wooldridge, Psy.D.\* (San Francisco, CA)

Psychoanalytic treatment of a young adult female with chronic anorexia nervosa and extraordinary reluctance to engage in treatment will be presented. Benefits of the dynamic approach for "resistant and refractory" patients will highlight how the treatment alliance expands over time and how severe, initial difficulties with symbolic processes may be remediated. Discussion of the patient's history will be followed by 2 hours of process material. Principles of clinical formulation, interpretation, and integration with other treatment modalities will assist the clinician with daily work with eating disorder patients and other groups (addictions; psychosomatic illnesses) who pose similar clinical challenges.

*continued*

# DAILY SCHEDULE

**3:45 P.M. – 5:45 P.M. CONTINUED**

After attending this session, participants should be able to: 1) Utilize psychoanalytic theories to build the therapeutic alliance over time; 2) Apply analytic technique to understand alexithymia and expand symbolic processes with a wide group of patients with eating, physiologic, and addiction problems. **CEC: 2**

## **DISCUSSION GROUP 13: RESEARCH ON THE RELATION OF PSYCHOANALYSIS AND NEUROSCIENCE: THE ASTONISHINGLY SUBTLE BUT SIGNIFICANT CLINICAL IMPLICATIONS OF NEUROPSYCHOANALYSIS**

Co-chairs &

Presenters: Charles P. Fisher, M.D. (San Francisco, CA)

Richard Kessler, D.O. (Long Island City, NY)

This program will include a clinical presentation illustrating how an analyst's mental models of the organization of mind and brain influence the analyst's presence and attention in clinical hours. Such models shape how the analyst listens to the patient, to internal processes within the analyst, and to patient/analyst interactions. Concepts of reverie, focused attention, and the boundaries of what counts as psychoanalytic data all apply. In contrast, attempts to formulate clinical interactions in strictly neurological terms generally constitute a countertransference interference with clinical work and a misapplication of neuropsychanalysis.

A second part of the program will involve a review of preliminary work on a project to explore how psychoanalysts are currently utilizing neuropsychanalytic findings.

After attending this session, participants should be able to: 1) Describe how neuropsychanalysis can inform psychoanalytic practice by way of the analyst's mental models; 2) Discuss the importance of creating operational definitions of foundational psychoanalytic concepts, a necessary step for the creation and assessment of neuropsychanalytic research. **CEC: 2**

**FRIDAY**



# DAILY SCHEDULE

3:45 P.M. – 5:45 P.M. CONTINUED

## DISCUSSION GROUP 14: THE INFLUENCE OF THE CONTEMPORARY BRITISH KLEINIANS ON CLINICAL PSYCHOANALYSIS

Chair &

Discussant: Abbot A. Bronstein, Ph.D. (San Francisco, CA)

Presenter: Cynthia Playfair, M.D. (Austin, TX)

This discussion group focuses on the analytic process from a British Contemporary Kleinian point of view. Hours from a psychoanalysis will be presented and discussed looking at analytic listening, transference, enactment, projective identification, interpretation, and unconscious phantasy. An attempt will be made to differentiate the analysts' way of working, the implicit and explicit theory of clinical work, from other ways of working clinically.

After attending this session, participants should be able to: 1) Explain the ideas of projective identification and enactment and the differences and similarities in usage between Kleinian and other psychoanalytic schools; 2) Describe how the here and now is understood within the unconscious phantasy of the patient's internal world. **CEC: 2**

## DISCUSSION GROUP 15: DEEPENING THE TREATMENT

Chair: Jane S. Hall, L.C.S.W., FIPA (New York, NY)

Presenter: Lee Jaffe, Ph.D., President-Elect (La Jolla, CA)

Many, if not most, of our patients can benefit from intensive psychotherapy and psychoanalysis. How to engage these patients in deepening the treatment as opposed to the once-a-week counseling they frequently ask for is the topic of this discussion group. One focus will be strengthening the therapist's conviction and fostering their skill in allowing the patient to consider the commitment involved in intensive treatment. Dr. Lee Jaffe will present an analytic case with a patient who rejected five previous well-qualified analysts. The discussion will focus on the initial assessment as it impacts the entrance into analysis, the role of self-disclosure in deepening the analytic process, flexibility versus more formulaic approaches to the initial interviews, and considerations of the analytic relationship and the analysis itself.

After attending this session, participants should be able to: 1) Use more modalities of analytic therapeutic action than just insight; 2) Demonstrate your confidence when recommending more frequent sessions. **CEC: 2**

# DAILY SCHEDULE

6:00 P.M. – 7:15 P.M.

## ERNST AND GERTRUDE TICHO MEMORIAL LECTURE AND PRESENTATION OF AWARDS

### JAPA Prize

Susan Coates, Ph.D. for her paper “Can Babies Remember Trauma? Symbolic Forms of Representation in Traumatized Infants” published in JAPA 64:4

Rebecca Chaplan, M.D. for her book essay “Heather Macdonald’s *H is for Hawk*” published in JAPA 64:1

### Ernst and Gertrude Ticho Memorial Lecture: “The Erotics of Knowing”

Chair: Harriet L. Wolfe, M.D., President (San Francisco, CA)

Introducer: Robert A. Paul, Ph.D. (Atlanta, GA)

Speaker: Adele Tutter, M.D., Ph.D. (New York, NY)



An erotics of knowing is posited, which comprises embodied aspects of psychological and emotional closeness, and which originates not in transference dynamics, but in the extraordinary intimacy of the analytic setting. The experience of knowing and being known is invested with erotic potential via its penetrative and receptive aspects: to know another is to enter a hidden interior “space” that represents

the embodied inner world. Likewise, aspects of the analysis enter into and reside in the mind of the analyst. Even if latent, this aspect of analytic erotism is to some extent inevitable, both component and consequence of the analytic process. The erotics of knowing has been historically obscured by the split in the discourse, between the qualified reality of the erotic transference and the construct of “real,” yet desexualized analytic love—a tension presaged by Freud’s own struggle with the question of reality as it pertains to love in the transference.

Educational objectives: After the presentation, audience members should be able to: 1) Describe the historical split in the psychoanalytic discourse between erotic transference and analytic love; 2) Summarize the rationale underlying the hypothesized “erotics of knowing.” **CEC: 1**

# DAILY SCHEDULE

7:15 P.M. – 8:30 P.M.

## SOCIAL EVENT:

### ERNST AND GERTRUDE TICHO MEMORIAL LECTURE RECEPTION

All are invited to attend this lovely cocktail reception sponsored by the Ernst and Gertrude Ticho Charitable Foundation immediately following the lecture.

Networking event being hosted within the reception:

Social Event: Candidates' Spring Party

The Candidates' Spring Party is an opportunity for candidates to meet each other to network, socialize, and learn about what it's like to train at other institutes around the country. Please join members of the Candidates' Council for our networking event on Friday, June 9th, which is being graciously hosted within the Ticho Memorial Lecture Reception.

**Saturday, June 10, 2017**

9:00 A.M. – 12:00 P.M.

## CLINICAL PLENARY ADDRESS:

### "ON THE COMPATIBILITY OF RELIGIOUS ORTHODOXY AND PSYCHOPATHOLOGY"

- Chair: Nancy Kulish, Ph.D. (Birmingham, MI)  
Introducer: R. Curtis Bristol, M.D. (Washington, DC)  
Speaker: Frank Lachmann, Ph.D. (New York, NY)  
Discussants: Sandra G. Hershberg, M.D. (Bethesda, MD)  
Mitchell Wilson, M.D. (Berkeley, CA)



In this case presentation, Dr. Lachmann demonstrates his self-psychological and eclectic approach and illustrates "leading and trailing edge interpretations." Analysis of a 20 year old man will be discussed with respect to his religious orthodoxy and his need to be perfect and pure. Tormented by doubts about his religious beliefs and intrusive sexual

*continued*

# DAILY SCHEDULE

## 9:00 A.M. – 12:00 P.M. CONTINUED

thoughts, he was unable to live up to his ideals and goals. Analysis of the patient's dreams and childhood sexual trauma became a central focus. This session explores Dr. Lachmann's attempts to help the patient feel understood and promote the patient/analyst connection, framed by differences and similarities in their religious backgrounds.

After participating in this discussion participants will be able to: 1) Compare "leading and trailing edge interpretations; 2) Discuss the compatibility of religious orthodoxy and psychoanalysis as illustrated by the case material. **CEC: 3**

## 12:00 P.M. – 2:00 P.M.

### LUNCH BREAK

## 2:00 P.M. – 4:00 P.M.

### SYMPOSIUM II:

#### CLASS STATUS WITHIN THE PSYCHOANALYTIC RELATIONSHIP

Chair: Michael S. Slevin, L.C.S.W.-C (Baltimore, MD)

Presenter: Lyn Yonack, M.S.W. (Great Barrington, MA)

Discussant: Marie G. Rudden, M.D. (West Stockbridge, MA)

This symposium, chaired by Michael Slevin, will focus on the ways in which fantasies about, and experiences concerning, social class can be expressed in analytic treatments, especially in the transference and countertransference. Lyn Yonack will present clinical material from an analysis that demonstrates the role that issues of social class played in her patient's dynamics. Marie Rudden will discuss common intra- and inter-psychoanalytic fantasies and their enactment within and outside of psychoanalysis.

After participating in this discussion participants will be able to: 1) Consider the role that fantasies about social class play within the analytic relationship; 2) Examine their own analytic and therapeutic endeavors for transference and counter-transferences related to fantasies about social class. **CEC: 2**

# DAILY SCHEDULE

2:00 P.M. – 4:00 P.M. CONTINUED

## CLINICAL CONFERENCE #3 FOR RESIDENTS, PSYCHOLOGY AND SOCIAL WORK TRAINEES, AND STUDENTS, PRESENTED BY APSAA FELLOWS: RAPED BY THE SYSTEM: A CASE OF INSTITUTIONALLY MEDIATED TRAUMA

Chair: Amy Vyas, M.D.\* (Houston, TX)  
Presenter: Chrysa Prestia, D.M.A., L.C.S.W.\* (Cambridge, MA)  
Discussant: Elizabeth M. Simpson, L.C.S.W. (San Francisco, CA)

This clinical conference will explore the role of psychoanalytic theory in understanding the effects of a socioculturally embedded trauma on intrapsychic and interpersonal self-cohesion. Case material from an intensive psychotherapy will be presented to examine the catastrophe of sexual violation in the context of a psychically structuring institutional affiliation. Dimensions of the patient's identity, how they have been formed and maintained, and how they intersect with institutional power structures, will be discussed. Of particular consideration will be the clinical dilemmas of processing institutionally mediated trauma, the painstaking reconstruction of identity, and the attendant transference/countertransference elements that evolved over the course of the treatment.

After attending this session, participants should be able to: 1) Analyze the impact of institutionally mediated trauma on self-identity and self-agency; 2) Consider the ways in which psychoanalytic thought can illuminate the interaction between sociocultural power structures and intrapsychic/interpersonal domains. **CEC: 2**

### MEET THE AUTHOR: DAPHNE MERKIN

Chair: Henry J. Friedman, M.D. (Cambridge, MA)  
Author &  
Presenter: Daphne Merkin\* (New York, NY)  
Book: "This Close to Happy"

Daphne Merkin, a well-known journalist and writer, will discuss her memoir "This Close to Happy." Her book has been recognized by both psychoanalysts and general readers as the most accurate, detailed account of her lifelong, intermittently suicidal depression. Reviewers have been stunned by the honesty of her narrative and her ability to convey what severe, intermittent depression feels like. She is able to consider both developmental and possible biological aspects of her illness without overdramatizing either possible

*continued*

# DAILY SCHEDULE

## 2:00 P.M. – 4:00 P.M. CONTINUED

explanation. The psychoanalytic treatments that she has engaged in, as well as the use of medication, are elaborated in the book. Merkin's ability to both experience inexorable depression and despair during periods of depression and to write beautifully about her experience during depression free times has resulted in communication to those involved in the treatment of severe depression that is invaluable in increasing their understanding and effectiveness.

After attending this session, participants should be able to: 1) Describe the painful nature of depressive feelings experienced by patients suffering from severe depression; 2) Explain the need for a combination of treatments necessary to support a psychoanalytic approach to the severely depressed patient. **CEC: 2**

### **TWO-DAY CLINICAL WORKSHOP #1: PROCESS AND TECHNIQUE IN PSYCHOANALYTIC PSYCHOTHERAPY (PART 2) **CEC: 2****

Chair: Ann Dart, L.C.S.W.\* (Portland, OR)

### **TWO-DAY CLINICAL WORKSHOP #2: WORKSHOP SERIES IN ANALYTIC PROCESS AND TECHNIQUE (PART 2) **CEC: 2****

Chair: Sharon Blum, Ph.D. (Los Angeles, CA)

### **TWO-DAY CLINICAL WORKSHOP #3: WORKSHOP SERIES IN ANALYTIC PROCESS AND TECHNIQUE (PART 2) **CEC: 2****

Chair: Donald B. Moss, M.D. (New York, NY)

### **CHILD AND ADOLESCENT TWO-DAY CLINICAL WORKSHOP (PART 2) **CEC: 2****

Chair: Christine C. Kieffer, Ph.D., ABPP (Chicago, IL)

# DAILY SCHEDULE

2:00 P.M. – 4:00 P.M. CONTINUED

## **DISCUSSION GROUP 16: PSYCHOTHERAPIST ASSOCIATES PRESENT: USING SELFDISCLOSURE TO FACILITATE INTROJECTION — TRANSFERENCE AND COUNTER TRANSFERENCE IMPLICATIONS**

Chair: Jacques Gourguechon, M.A., L.P.C.\* (Chicago, IL)  
Presenter: Jennifer Gardner, L.C.S.W.\* (Houston, TX)  
Discussant: Lee Jaffe, Ph.D., President-Elect (La Jolla, CA)

This discussion group provides training in psychodynamic principles and techniques of psychoanalytic psychotherapy. Its general focus is identifying and managing countertransference and transference enactments to facilitate treatment. This case presentation and discussion will highlight these processes, demonstrating the therapist's use of self-disclosure to facilitate the patient's introjection. The program will also clarify how to manage and make use of one's subjective reactions to advance the treatment. Attendees will hear about and discuss a patient's individual therapy's content and process. This session is appropriate for all levels of clinical training and skill.

After attending this session, participants should be able to: 1) Predict, identify and describe counter-transference and transference enactments in individual psychotherapy; 2) Describe and apply self-reflective strategies to identify and use counter-transference to protect the treatment from destructive re-enactments in the context of the therapist's decision about when, whether and how to self-disclose, to facilitate the patient's introjection. **CEC: 2**

## **DISCUSSION GROUP 17: THE INTEGRATION OF PSYCHOANALYSIS AND COUPLE THERAPY**

Co-chairs &  
Presenters: Graciela E. Abelin-Sas Rose, M.D. (New York, NY)  
Peter Mezan, Ph.D.\* (New York, NY)

This discussion group will study the application of psychoanalytic principles to the treatment of couples, will define the distinction between the unconscious organization of the individual and of the couple and will observe the potentiating synergy in the concurrent treatment of individual psychoanalysis and psychoanalytic couple therapy. While one analyst will present the treatment

*continued*

# DAILY SCHEDULE

## 2:00 P.M. – 4:00 P.M. CONTINUED

of a couple, another analyst will present the individual treatment of one of the partners. The joint presentation will specifically explore the development of intimacy in the couple. The group will be able to assess which aspects of each individual patient's personality contributes and may be reinforced by the partner, sometimes enhancing the levels of intimacy in the relationship, sometimes detracting from them, or even destroying them.

After attending this session, participants should be able to: 1) Assess what are the problems of intimacy in the couple; what are the main obstacles to its development and how to address them; 2) Design precise and effective interventions to deal with the dynamics that promote interruptions of intimacy in the couple. **CEC: 2**

### DISCUSSION GROUP 18: PARENT WORK IN PSYCHOANALYSIS

Co-chairs: Jack Novick, Ph.D. (Ann Arbor, MI)  
Kerry Kelly Novick (Ann Arbor, MI)

Presenter: Jaqueline Langley, Ph.D. (Saint Louis, MO)

Clinical material from analysis with a preschool child who was out of control and unmanageable will be presented and details from the concurrent work with the parents, especially mother, will demonstrate that concurrent parent work was essential to starting and maintaining the analysis of the child and achieving a successful outcome. The material will also focus on the techniques of concurrent parent work and how it represents an expansion of child analytic technique

After attending this session, participants should be able to: 1) Apply techniques to work with the dynamic interplay of child and parental conflicts, anxieties and defenses; 2) Utilize a wider range of techniques in their work with parents. **CEC: 2**



# DAILY SCHEDULE

2:00 P.M. – 4:00 P.M. CONTINUED

## **DISCUSSION GROUP 19: PSYCHOANALYTIC PERSPECTIVES ON OPERA: BENJAMIN BRITTEN'S "PETER GRIMES," CONSIDERED IN RELATION TO ITS COMPOSER'S INTRAPSYCHIC AND INTERPERSONAL PSYCHOSEXUAL CONFLICTS**

Chair &

Presenter: Ralph Beaumont, M.D. (Portland, OR)

Discussant: Robert L. Bergman, M.D. (Seattle, WA)

Benjamin Britten, a conscientious objector, homosexual, and suspected pedophile, composed "Peter Grimes," his best known and now classic opera during World War II. What part did his intrapsychically and interpersonally conflicted psychosexuality play in the creation and artistic success of this dark musical narrative? The discussants will consider this question through the application of analytic concepts to relevant aspects of the composer's life, the history of the opera's composition, its libretto, and its music, with its darkly complex affective coloration. We will also consider applications to clinical work, which, in relation to the questions raised by Britten's struggles, are certainly far from rare.

After attending this session, participants should be able to: 1) Describe multiple ways in which the composer's intrapsychic and interpersonal conflicts were represented in the manifest opera, and multiple forms of metaphoric and indirect expression that are employed to creatively portray these conflicts; 2) Apply an understanding of the composer's psychosexual conflicts and their manner of representation to multiple examples of clinical work with patients with complex psychosexual conflicts. **CEC: 2**

## **DISCUSSION GROUP 20: THE CANDIDATE AT WORK: THE BODY ON THE COUCH**

Chair: Sarah L. Lusk, Ph.D. (Cambridge, MA)

Presenter: Jane E. Keat, D.Phil., Psy.D. (Cambridge, MA)

Discussant: JoAnn Ponder, Ph.D. (Austin, TX)

We focus on the mind so much in psychoanalytic work that we may slip into a state of disembodiment. As candidates we are using our minds intensively, working hard to listen on multiple levels, pay attention to associative connections, observe defensive shifts, and formulate useful interventions. It can be easy to ignore the

*continued*

# DAILY SCHEDULE

2:00 P.M. – 4:00 P.M. CONTINUED

physicality of the body in front of us on the couch, as well as our own. Yet we are indeed two bodies in the room, and patients bring physical concerns, symptoms, and experiences into the work. Through listening closely to process we will explore how we can work with the somatic in psychoanalysis and find if there is a bodily equivalent of free association.

After attending this session, participants should be able to: 1) Demonstrate increased awareness of the somatic level in psychoanalytic treatment; 2) Utilize different interventions in response to somatic experiences. **CEC: 2**

## DISCUSSION GROUP 21: ETHICAL DILEMMAS IN PSYCHOANALYTIC INSTITUTES

Co-chairs: Susan Kattlove, M.D. (Cambridge, MA)  
Stephanie Schechter, Psy.D. (Cambridge, MA)

*Note: This program is intended to satisfy the requirements of those states that require CME credits in the area of risk management or medical ethics for medical license renewal, but the final judgment for such qualification is made by each state's medical board.*

This discussion group will explore every day ethical dilemmas that occur in clinical work and in the life of a psychoanalytic institute. What is ethical professional behavior in the consulting room, in the classroom, in admissions meetings, in supervision? How do we make ethical judgments when there are competing interests to consider? Why is ethical conduct so difficult to talk about at institutes? Using a method employed at the Boston Psychoanalytic Society and Institute to ease barriers to open discussion, this group will use a fictional vignette as a springboard to explore the multiple ethical and clinical choices members of psychoanalytic institutes face in supervisory, treatment, and peer relationships.

After attending this session, participants should be able to: 1) Describe competing ethical and clinical values that arise in relationships among members of psychoanalytic institutes; 2) Apply these concepts to participants' own clinical, supervisory, and collegial relationships. **CEC: 2**

# DAILY SCHEDULE

2:00 P.M. – 4:00 P.M. CONTINUED

## DISCUSSION GROUP 22:

### DECISION-MAKING IN OLDER ADULTS: CONTRIBUTIONS FROM PSYCHODYNAMIC/UNCONSCIOUS FACTORS

Chair: Daniel A. Plotkin, M.D., M.P.H., Ph.D. (Los Angeles, CA)  
Discussants: Audrey Kavka, M.D. (Oakland, CA)  
Doryann Lebe, M.D. (Los Angeles, CA)  
Donald Royall, M.D.\* (San Antonio, TX)  
Mi Yu, M.D., Ph.D. (Nashville, TN)

This discussion group represents the fourth overall, in the second year of a seven year commitment to focus on older adults. Previous groups provided a historical perspective, with clinical examples of successful psychoanalytic work, identification of bias against older adults (ageism), identification of issues pertinent to death/end of life, and most recently an exploration of medical and cognitive assessment and functioning that may affect psychoanalytic work. This discussion group extends the theme by looking at the important issue of decision-making ability of older adults, which is relevant to treatment, end-of-life, estate-planning and other decision areas. The group will identify conscious and unconscious contributions to decision-making in older adults, and include exploration of overall cognitive function, executive function, and vulnerability to undue influence. Clinical examples will be provided, illustrating how psychodynamic factors are still active in old age, and make significant contributions relevant to decision-making.

After attending this session, the participant should be able to: 1) Describe the importance of assessment of decision-making ability in older adults and the potential for psychoanalysts to contribute to this area; 2) Describe unconscious/psychodynamic factors that influence decision-making ability in older adults. **CEC: 2**

SATURDAY

# DAILY SCHEDULE

4:30 P.M. – 6:30 P.M.

## PANEL I:

### A PSYCHOANALYTIC PERSPECTIVE ON THE GUN IN AMERICAN CULTURE

Panel

Introduction: Brenda Bauer, Psy.D. (New York, NY)

Moderator: JoAnn Ponder, Ph.D. (Austin, TX)

Panelists: Patrick Blanchfield, Ph.D.\* (New York, NY)

Harold Kudler, M.D. (Washington, DC)

Jeffrey Taxman, M.D. (Mequon, WI)

Too often, conversations about guns stray into culture-war battlegrounds. Bracketing deadlocked debates, this panel explores psychoanalytic meanings of the gun in America. Patrick Blanchfield, a freelance journalist and academic, will speak about gun culture and violence. Harold Kudler, APsaA's Service Members and Veterans Initiative Chair, will juxtapose the positive valence of guns in the military with the danger of suicide. Jeffrey Taxman will draw upon his community psychoanalytic expertise to address the gun as internalized symbol in American culture and across generations. Moderator JoAnn Ponder, who has studied the 1966 University of Texas - Austin massacre, will engage the panel and audience in open discussion.

After attending this session, participants should be able to: 1) Recognize differences between the psychoanalytic meaning and symbolism in the rhetoric of gun ownership and gun regulation in American culture; 2) List two analytic interpretations of the drive to gun ownership. **CEC: 2**

7:30 P.M. – 9:30 P.M.

## SOCIAL EVENT:

### DINNER AND MUSIC AT COOPER'S

### SPONSORED BY FRENKEL & COMPANY

Start your night with a short walk to Cooper's restaurant accompanied by a guide who will answer your questions about the surrounding neighborhood. Unwind with an old fashion pit bar-bque dinner and cap off the evening listening to music by The Blues Specialists featuring Mel Davis.

Visit APsaA's registration desk if you wish to purchase a ticket to this event.

# DAILY SCHEDULE

**Sunday, June 11, 2017**

**8:00 A.M. – 9:00 A.M.**

**SOCIAL EVENT:**

**EXHIBITOR BREAKFAST FOR ALL PARTICIPANTS**

Join colleagues in the Exhibit Hall for a cup of coffee and continental breakfast before the final sessions of the meeting.

**9:00 A.M. – 11:00 A.M.**

**PANEL II:**

**NEW DEVELOPMENTS AND CHALLENGES IN THE ANALYST AS GROUP THERAPIST: ENACTMENTS, ACTMENTS AND UNOBTRUSIVENESS**

Chair: Bonnie J. Buchele, Ph.D. (Kansas City, MO)

Panelists: Albert Brok, Ph.D.\* (New York, NY)

Robert Grossmark, Ph.D. \* (New York, NY)

The interface between psychoanalysis and the group world has been changing with the growth and development of relational theories as well as enlightening neuroscientific findings about human interaction. This panel will feature two clinical papers by analysts who are group therapists: “The Unobtrusive Group Analyst and the Work of the Narrative” by Robert Grossmark, Ph.D., and “The Unique Value of Group for Clinical Psychoanalysis” by Albert Brok, Ph.D. Bonnie Buchele, Ph.D., will lead a discussion about this exciting work following the presentation of the papers.

After attending this session, participants should be able to: 1) Consider the applications of recent theoretical innovations and neuroscientific findings to the practice of psychoanalytic group psychotherapy; 2) Discuss and work clinically with enactments in the group setting. **CEC: 2**

SUNDAY

# DAILY SCHEDULE

9:00 A.M. – 11:00 A.M. CONTINUED

**CLINICAL CONFERENCE # 4 FOR RESIDENTS, PSYCHOLOGY AND SOCIAL WORK TRAINEES, AND STUDENTS, PRESENTED BY APSAA FELLOWS: “SHE REMINDS ME OF HER FATHER”: INTERGENERATIONAL TRAUMA, PARENTING, AND DEVELOPMENT**

Chair: Jessica F. Rollin, M.D.\* (Zuni, NM)

Presenter: Azeesat Babajide, M.D., M.B.A.\* (Los Angeles, CA)

Discussant: Anton H. Hart, Ph.D. (New York, NY)

This clinical conference will examine the complicated impacts of individual trauma on a family system. The presenter will use case material from both individual and parent sessions to discuss treatment of an adolescent (now young adult) with externalizing behaviors and her parents, all of whom have experienced their own respective traumas. Emphasis will be placed on the role of trauma in the family and its wide-reaching implications for 1) decision making for all family members, 2) parental containment of the adolescent’s affect, and 3) the adolescent’s developmental trajectory. The presenter will also reflect on how knowledge of each family member’s trauma history aided in recognizing ambivalence about the therapy as a facilitator of the adolescent’s symptomatic improvement

After attending this session, participants should be able to: 1) Consider the impact of trauma on parents’ ability to parent in developmentally appropriate ways; 2) Describe the impact of trauma on development. **CEC: 2**

## Confidentiality

Confidentiality is of the utmost importance to APsaA and we would like to remind you about a few key issues concerning confidentiality at the Annual Meeting:

- In order to protect the confidentiality of the discussions and patient information, material presented in sessions must not be written about or discussed outside of the session.
- Use appropriately disguised information and/or informed consent when talking about a patient. Even when demographic variables have been changed, specific details included in clinical material can reveal a patient's identity to those who know him and should be avoided where possible.
- If a registrant attends a session in which clinical material is being presented and discussed and the registrant thinks that they recognize the identity of the patient, they should protect the patient's confidentiality by quietly excusing themselves from the remainder of that session.
- Special care must be taken to avoid conversations about clinical material in halls and elevators.
- Emails and Internet postings about the clinical material should be absolutely avoided.

Attendance at APsaA's meetings are dependent upon the participant's agreement to maintain this confidentiality. We're sure you can appreciate the importance of this issue and we thank you for your cooperation.

# APsaA Officers, Program Committee and Staff

## OFFICERS

Harriet Wolfe, M.D. .... President  
 Lee Jaffe, Ph.D. .... President-Elect  
 Ralph E. Fishkin, D.O. .... Secretary  
 William A. Myerson, Ph.D. .... Treasurer

## BOARD ON PROFESSIONAL STANDARDS

Dwarakanath G. Rao, M.D. .... Chair, Board on Professional Standards  
 Dionne R. Powell, M.D. .... Secretary, Board on Professional Standards

## PROGRAM COMMITTEE



Christine C. Kieffer,  
 Ph.D., ABPP

Carlos Almeida, M.D. (LGBT Liaison)  
 Frances Arnold, Ph.D.  
 Sharon Blum, Ph.D.  
 Irene Cairo, M.D.  
 Stanley J. Coen, M.D.  
 Darlene Bregman Ehrenberg, Ph.D.,  
 ABPP  
 Sarah J. Freke, M.D.\* (Canadian  
 Society representative)  
 Henry J. Friedman, M.D.  
 Glen Gabbard, M.D.  
 Melinda Gellman, Ph.D.  
 Margaret-Ann Hanly, Ph.D.\*  
 Alexandra Harrison, M.D.  
 Sandra G. Hershberg, M.D.

Dorothy E. Holmes, Ph.D., ABPP  
 Holly Friedman Housman, LICSW  
 Jane V. Kite, Ph.D.  
 Nancy Kulish, Ph.D.  
 Joseph D. Lichtenberg, M.D.  
 Bonnie E. Litowitz, Ph.D. (Ex Officio)  
 Sarah Lusk, Ph.D.  
 Mary Margaret McClure, D.M.H.  
 Donald B. Moss, M.D.  
 Julie Jaffee Nagel, Ph.D.  
 Monisha Nayar-Akhtar, Ph.D.  
 Warren S. Poland, M.D.  
 Aneil Shirke, M.D., Ph.D. (Continuing  
 Education Liaison)  
 Jennifer Stuart, Ph.D.  
 Joan Wheelis, M.D.  
 Mitchell Wilson, M.D.  
 Richard B. Zimmer, M.D.

*\*indicates non member*



## STAFF

Chris Broughton..... Continuing Education & Meetings Registration Manager  
Extension 19, cbroughton@apsa.org

Michael Candela ..... Meetings and Exhibits Manager  
Extension 12, mcandela@apsa.org

Brian Canty ..... Manager, Computer Information Services  
Extension 17, bcanty@apsa.org

Sherkima Edwards ..... Accounts Receivable Coordinator  
Extension 15, sedwards@apsa.org

Tina Faison ..... Administrative Assistant to Executive Director  
Extension 23, tfaison@apsa.org

Carolyn Gatto ..... Scientific Program & Meetings Director  
Extension 20, cgatto@apsa.org

Rosemary Johnson ..... Meetings and Communications Coordinator  
Extension 28, meetadmin@apsa.org

Johannes Neuer ..... Web Producer  
jneuer@apsa.org

Nerissa Steele-Browne ..... Manager, Accounting Department  
Extension 16, nsteele@apsa.org

Dean K. Stein ..... Executive Director  
Extension 30, deankstein@apsa.org

Wylie G. Tené ..... Director of Public Affairs  
Extension 29, wtene@apsa.org

Debra Steinke Wardell ..... Manager, Education and Membership Services  
Extension 26, dsteinke@apsa.org

Bronwyn Zevallos ..... Membership Services Assistant  
Extension 18, membadmin@apsa.org

# Program Participants

## A

Aisha Abbasi, M.D. ....	18
Graciela E. Abelin-Sas Rose, M.D. ....	43
Robert H. Abzug, Ph.D. ....	24
Marianna Adler, Ph.D. ....	27
Ricardo Ainslie, Ph.D. ....	17
Carlos Almeida, M.D. ....	18
C.J. Alvarez, Ph.D. ....	28

## B

Azeesat Babajide, M.D., M.B.A. ....	50
Bernard W. Bail, M.D. ....	22
Brenda Bauer, Psy.D. ....	48
Earle Baughman, M.D. ....	20
Steven Baum, Psy.D. ....	29
Asli Baykal, Ph.D., L.C.S.W. ....	29
Ralph Beaumont, M.D. ....	23, 45
Robert L. Bergman, M.D. ....	45
Stephen B. Bernstein, M.D. ....	20
Mia W. Biran, Ph.D. ....	25
Patrick Blanchfield, Ph.D. ....	48
Sharon Blum, Ph.D. ....	31, 42
R. Curtis Bristol, M.D. ....	35, 39
Albert Brok, Ph.D. ....	49
Abbot A. Bronstein, Ph.D. ....	37
Bonnie J. Buchele, Ph.D. ....	49
Sandra Buechler, Ph.D. ....	24

## C

Miguel Caballero, M.A. ....	29
Joanne E. Callan, Ph.D. ....	21
Phoebe Cirio, M.S.W., L.C.S.W. ....	18
Adriana M. Crane, L.C.S.W. ....	32
Holly Crisp-Han, M.D. ....	29

## D

Ann Dart, L.C.S.W. ....	30, 42
Susan L. Donner, M.D. ....	34

## F

Charles P. Fisher, M.D. ....	36
Susan Flinders, Ph.D. ....	32
Cary D. Friedman, M.D. ....	34

## G

Glen Gabbard, M.D. ....	23, 32
Robert M. Galatzer-Levy, M.D. ....	32
Jennifer Gardner, L.C.S.W. ....	43
Valerie Golden, J.D., Ph.D. ....	19
Francisco Gonzalez, M.D. ....	17, 26
Jacques Gourguechon, M.A., L.P.C. ....	43
Cynthia Ellis Gray, M.D. ....	30
Jay Greenberg, Ph.D. ....	31
Robert Grossmark, Ph.D. ....	49
Nicole Guidotti-Hernandez, Ph.D. ....	28

## H

Jane S. Hall, L.C.S.W., F.I.P.A. ....	37
Jennifer Harris, M.D. ....	19
Anton H. Hart, Ph.D. ....	50
Fonya Lord Helm, Ph.D., ABPP ....	22
Sandra G. Hershberg, M.D. ....	39
Dorothy E. Holmes, Ph.D., ABPP ....	17, 26

## J

Lee Jaffe, Ph.D. ....	19, 37
Larisa Jeffreys, M.A., M.N., PMHNP ....	30
Alice Jones, M.D. ....	31

## K

Susan Kattlove, M.D. ....	46
Audrey Kavka, M.D. ....	21, 47
Jane E. Keat, Psy.D. ....	45
Maurine Kelber Kelly, Ph.D. ....	22
Richard J. Kessler, D.O. ....	36
Christine C. Kieffer, Ph.D., ABPP ....	32, 42
Peter Kotcher, M.D. ....	33
Harold Kudler, M.D. ....	48
Nancy Kulish, Ph.D. ....	39

# Program Participants

## L

Frank Lachmann, Ph.D. ....	39
Jacqueline Langley, Ph.D. ....	44
Doryann Lebe, M.D. ....	47
Cynthia Lee, Ph.D., J.D. ....	29
Eva F. Lichtenberg, Ph.D. ....	24
Kay M. Long, Ph.D. ....	27
Sarah L. Lusk, Ph.D. ....	45

## M

Lisa L. Madsen, M.D. ....	23
Mary Margaret McClure, D.M.H. ....	19
Susan McNamara, M.D. ....	34
Daphne Merkin.....	41
Peter Mezan, Ph.D. ....	43
Diana E. Moga, M.D., Ph.D. ....	34
Donald B. Moss, M.D. ....	26, 31

## N

Kerry Kelly Novick.....	44
Jack Novick, Ph.D. ....	44

## P

Judith Parker, Ph.D. ....	22
Stefan Pasternack, M.D. ....	35
Robert A. Paul, Ph.D. ....	38
Sidney H. Phillips, M.D. ....	34
Petra Pilgrim, M.D. ....	19
Cynthia Playfair, M.D. ....	23, 37
Daniel A. Plotkin, M.D., M.P.H., Ph.D. ...	47
JoAnn Ponder, Ph.D. ....	45, 48
Chrysa Prestia, D.M.A., L.C.S.W. ....	41

## R

Raul A. Ramos, Ph.D. ....	28
Robin Rayford, M.A. ....	32
Jessica F. Rollin, M.D. ....	50
Louis Roussel, Ph.D. ....	26
Donald Royall, M.D. ....	47

Marie G. Rudden, M.D. ....	40
Peter L. Rudnytsky, Ph.D., L.C.S.W. ....	24
Gabriel Ruiz, M.A., L.C.P.C. ....	28

## S

Stephanie Schechter, Psy.D. ....	46
Harvey J. Schwartz, M.D. ....	20
Stephen Seligman, D.M.H. ....	26
Nisha Shah, M.D. ....	32
Elizabeth M. Simpson, L.C.S.W. ....	41
Michael S. Slevin, L.C.S.W.-C. ....	40
Don Spivak, M.D. ....	34

## T

Jeffrey Taxman, M.D. ....	48
Arnold D. Tobin, M.D. ....	24
Adele Tutter, M.D., Ph.D. ....	38

## V

Amy Vyas, M.D. ....	41
---------------------	----

## W

Loren A. Weiner, Ph.D. ....	22
Mitchell Wilson, M.D. ....	39
Harriet L. Wolfe, M.D. ....	38
Tom Wooldridge, Psy.D. ....	35

## Y

Lyn Yonack, M.S.W. ....	40
Mi Yu, M.D., Ph.D. ....	47

## Z

Lynne M. Zeavin, Psy.D. ....	27
Kathryn J. Zerbe, M.D. ....	35

# New from GUILFORD PRESS

25%  
OFF

## Psychodynamic Diagnostic Manual second edition PDM-2

Companion  
Website

edited by  
**Vittorio Lingiardi**  
**Nancy McWilliams**

**New Edition—A Major Revision!**

## Psychodynamic Diagnostic Manual SECOND EDITION, PDM-2

Edited by **Vittorio Lingiardi, MD**  
**Nancy McWilliams, PhD, ABPP**

“This heroically ambitious book is a startlingly successful synthesis of the confusing babel of different psychoanalytic tongues. It will improve the daily practice of psychodynamic clinicians, enliven teaching in the field, and contribute to the infant field of psychodynamic research.”  
—Allen Frances, MD

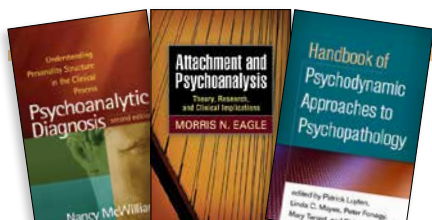
Now completely revised (over 90% new), this is the authoritative diagnostic manual grounded in psychodynamic clinical models and theories. Explicitly oriented toward case formulation and treatment planning, PDM-2 offers practitioners an empirically based, clinically useful alternative or supplement to DSM and ICD categorical diagnoses. Leading international authorities systematically address personality functioning and psychological problems of infancy, childhood, adolescence, adulthood, and old age, including clear conceptualizations and illustrative case examples. Purchasers get access to a companion website where they can find additional case illustrations and download and print five reproducible PDM-derived rating scales in a convenient 8½" x 11" size.

Sponsoring associations include the International Psychoanalytical Association, Division 39 of the American Psychological Association, the American Psychoanalytic Association, the International Association for Relational Psychoanalysis & Psychotherapy, the American Association for Psychoanalysis in Clinical Social Work, and five other organizations.

**Includes Reproducible Rating Scales & Other Resources**

June 21, 2017, 7" x 10" Paperback, 1,078 Pages, ISBN 978-1-4625-3054-0, \$65.00, **\$48.75**

**MORE INFO** [www.guilford.com/pdm2](http://www.guilford.com/pdm2)



**Discover more titles on Psychoanalysis:**

[www.guilford.com/d/pp/psychan](http://www.guilford.com/d/pp/psychan)

**Download our latest Psychoanalysis catalog:**

[www.guilford.com/add/catpsyacan.pdf](http://www.guilford.com/add/catpsyacan.pdf)

## GUILFORD PRESS

370 Seventh Avenue, Suite 1200 • New York, NY 10001-1020 • Phone 800-365-7006 • Fax 212-966-6708

Order online: [www.guilford.com](http://www.guilford.com) & save 25% + free shipping • Use promotional code AFPDM2

# YELLOWBRICK<sup>SM</sup>

HEALING THE BRAIN, TRANSFORMING LIVES

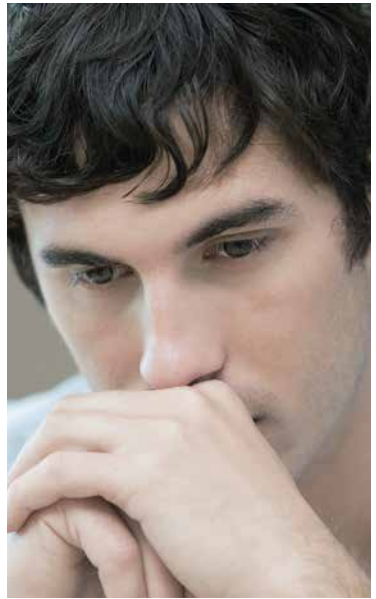
**A national center of excellence specializing in the treatment of emerging adults (ages 17-30's) and their families.**

Yellowbrick addresses the complex needs of troubled emerging adults with full time, experienced and compassionate professionals dedicated to accountability and outcome.

**Clinical Issues:** Across a spectrum of diagnoses and syndrome patterns of dysfunction, all of the young people coming to Yellowbrick share the common difficulty in negotiating the universal challenges of transition to adulthood. Many struggle with diverse forms of developmental trauma.

**Program Model:** Yellowbrick's "real time treatment" model targets these developmental processes with interventions informed by an integration of:

- Neuroscience research
- Developmental psychology
- Cognitive, skills-based, experiential and in-depth psychotherapies
- Strength-based rehabilitation and wellness approaches
- Sober peer community within a naturalistic "real time" setting



Visit [www.yellowbrickprogram.com](http://www.yellowbrickprogram.com)  
or call 847 869-1500 x233



## Psychoanalytic & Psychodynamic Teachers' Academy



**A Professional Development Program for Clinical Teachers of Psychoanalysis and/or Psychodynamic Therapy in:**

- Psychiatry Residency Programs
  - Psychology Graduate Programs
  - Social Work Graduate Programs
- 
- Reimbursed travel and expenses for participation in a specially designed program at APsA's 2018 National Meeting in New York City (February 14-18)
  - Teaching Seminars led by Master Teachers and Course Development
  - Year Long Individual Mentorship

**For more information, visit: [www.apsa.org/teachers-academy](http://www.apsa.org/teachers-academy)**

Applications now being accepted through September 30, 2017.



# INTIMACY

IPA 50TH CONGRESS  
IPSO 24TH CONFERENCE  
BUENOS AIRES 25-29 JULY 2017

For psychoanalysts, intimacy is the currency of every session. Intimacy permeates all facets of psychoanalysis, taking many shapes. It informs relationships with our patients, our theories and our own work.

Join us in the vibrant city of Buenos Aires to share new discoveries in psychoanalysis and to meet colleagues from every part of the world.

Early-bird registration opening soon.

 [ipa.world/Congress](http://ipa.world/Congress)    [ipa@ipa.org.uk](mailto:ipa@ipa.org.uk)   [#IPABuenosAires2017](https://twitter.com/IPABuenosAires2017)

 [InternationalPsychoanalyticalAssociation](https://www.facebook.com/InternationalPsychoanalyticalAssociation)

 [Hilton Puerto Madero](#)

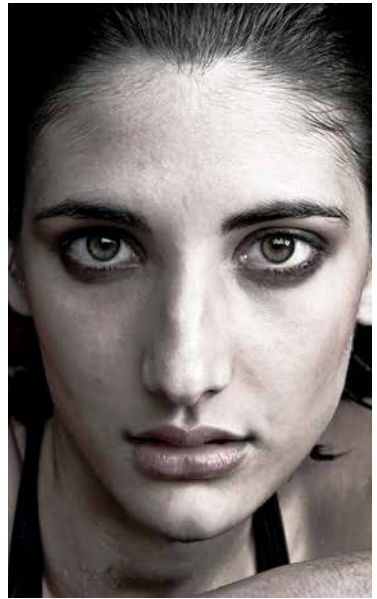


INTERNATIONAL  
PSYCHOANALYTICAL  
ASSOCIATION

## Trauma Recovery and Eating Disorder Services

### Supported Residence & Intensive Outpatient Programs for Trauma Recovery & Eating Disorders

- Day & evening IOPs for emerging adults ages 18-30.
- Developmental and neuroscience informed approach.
- Educational, experiential and interpersonal groups.
- In-depth individual psychotherapy 3x/week with senior, doctoral professionals.
- Multimodal experiential components including meditation, mindfulness, yoga, drama and art therapy.
- Becoming Safely Embodied and Nourishing Wisdom educational curricula.
- In collaboration with other professionals & treatments.



Visit [www.yellowbrickprogram.com](http://www.yellowbrickprogram.com)  
or call 847 869-1500 x233



American  
Board of  
Psychoanalysis

Offering National Board Certification  
in Psychoanalysis to Eligible Psychoanalysts

A 501(c)(3) Non-Profit Organization

**Grandparenting Ends December 31, 2017**

Now accepting applications  
for the February 2018 exam

[www.abpsa.org](http://www.abpsa.org)

from...

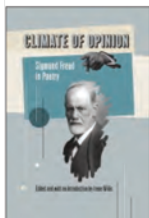
**IPBooks.net**



IPBOOKS.net  
International Psychoanalytic Books

(For international shipping rates,  
please write to: [psypsa@aol.com](mailto:psypsa@aol.com))

**COMING SOON!** edited by *Irene Willis*



***Climate of Opinion: Sigmund Freud in Poetry***

An anthology of poems, ranging from deeply serious to wildly irreverent, about Sigmund Freud, psychoanalysis, and Freudian concepts.

Just as we have assembled an eclectic group of poets in this volume, we anticipate that our readers will also be an eclectic group. Many will be professional poets and teachers of English, literature and creative writing to undergraduate and graduate students. Some will be leaders of poetry workshops and book discussion groups who have only a layperson's knowledge of psychoanalysis and Freudian theory. Others will be mental health professionals who would like to know more about poetry.

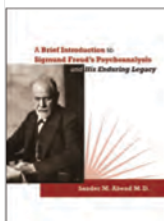
**COMING SOON!** edited by *Burton N. Seidler & Kimberly S. Kleinman*



***Essays From Cradle to Couch: In Honor of the Psychoanalytic Developmental Psychology of Sylvia Brody***

This book is a compilation of select papers written by distinguished authorities in the field that are specifically dedicated to the important and extensive body of work of Dr. Sylvia Brody with regard to the fields of infant, child, adolescent, developmental psychology and psychoanalysis. Dr. Brody has supplied us with Psychoanalytic and Psychodynamic methods by which children whose early development was less than optimal, and where normal development was detoured or otherwise impeded, can helped.

**NEW!** *Sander M. Abend*

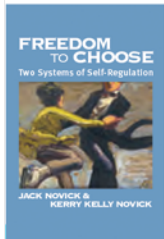


***A Brief Introduction to Sigmund Freud's Psychoanalysis and His Enduring Legacy***

This book is a product of many years of serious thought and reflection, scholarship and scientific contribution, as well as the practice of tact. It is evidence of the author's clarity in teaching, editing and persuading, and of fighting to discipline the presentation of complex ideas in order to construct a comprehensible whole out of a multitude of ideas and suggestions. The cohesiveness and inclusiveness of Abend's description is sure to reward the reader.

—Ernest Kafka, M.D., *Training and Supervising Analyst,*  
*The New York Psychoanalytic Institute*

**NEW!** *Jack Novick & Kerry Kelly Novick*



***Freedom to Choose: Two Systems of Self-Regulation***

Psychoanalysis is a human tradition passed on from one generation to the next. This collection of letters and related documents are a testament to the fertile collaboration between Anna Freud and Humberto Nágera, and through these documents we witness the passing of the torch. Their work together was based at the Hampstead Clinic in London, and included clinical work, theoretical seminars, research, and cooperation in the management of administrative tasks at the Clinic.



# The PEP Psychoanalytic Library in your hand



With our new app you can now access PEP-WEB from:



Desktop



Cellphone



Tablet

- **Convenient full searchable database of papers, books and videos**
- **Easy access to new additions and publications**
- **See the most read papers and books on your home screen**
- **Search, read and watch videos... on the go!**

New features and upgrades are always being implemented on PEP-Web. PEP has a new support website that is integrated with PEP-Web. It can be found at: <http://www.support.pep-web.org>.

#### *New Journals added:*

- **Psicoterapia e Scienze Umane - 1982 to current, an Italian journal.**
- **Journal of Applied Psychoanalytic Studies, Vol. 1-5, providing the missing content from this journal already on PEP.**
- **International Journal of Psychoanalysis - An annual in Chinese of selected IJP articles.**

#### **NEW:**

##### **INSIGHTS IN PSYCHOANALYSIS**

100 psychoanalysts, 100 films

Interviews with the authors of the 100 most read papers on PEP-WEB.

35 interviews live to watch now

Visit [www.pep-web.com](http://www.pep-web.com) to learn about our subscription rates for:

- Individuals
- Psychoanalytic & other groups
- Universities & public institutions

For further news and information go to <http://support.pep-web.org>

To search the PEP Archive and current content of some journals free of charge visit:

<http://www.pep-web.org>

(access to full text requires a subscription).




# APsaA Launches An Online Learning Platform

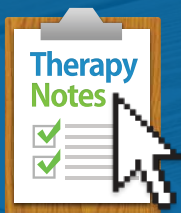


This new venture will allow mental health professionals to earn continuing education (CE) credits online.

To earn credit users will:

- 
- Three downward-pointing chevrons in shades of blue, arranged vertically on the left side of the list items.
- Purchase and read a JAPA article
  - Take and pass a test
  - Complete an evaluation

For more information visit  
[apsa.org/continuing-education](https://apsa.org/continuing-education)



# TherapyNotes™

Online Practice Management  
Software for Behavioral Health

11:30AM Appt with Kyle

Called in to say he may be a little late

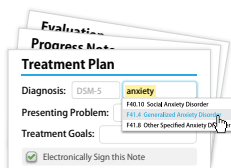
12:00PM Appt with Susan

Remember to collect paperwork

Create a Progress Note for your appointment on 4/16

## Scheduling & To-Do Lists

Optimize how you manage appointments, notes, and billing. Your To-Do list automatically keeps track of notes you need to write, pending billing actions, and much more. Sync your calendar to your phone to view your schedule on the go.



## Robust Notes & EMR

Document your clients' growth with powerful form-based notes, each uniquely designed for behavioral health. Go paperless by uploading your patient files into TherapyNotes. All of your data is secure and encrypted.



## Easy Electronic Billing

Streamline your billing with seamlessly integrated electronic insurance claims, ERA payment posting, credit card processing, and more. Submit insurance claims with a single click. Easily generate statements, superbills, revenue reports, and more.

**PLUS** your own custom client portal, automated appointment reminders, and unlimited support

## Special Offer!

Just for American  
Psychoanalytic Association  
Annual Meeting Attendees!

Sign Up and Receive Your First

# 2 Months FREE!

Use Promo Code: **APSAAMEET17**

Offer Expires 8/1/2017

View Features and Sign Up Today at  
[www.TherapyNotes.com](http://www.TherapyNotes.com)

Read **JAPA** Online at [japa.sagepub.com](http://japa.sagepub.com)!



# japa

*Journal of the American Psychoanalytic Association*

**EDITOR**  
**Bonnie E. Litowitz**

One of the world's most respected publications in psychoanalysis, the **Journal of the American Psychoanalytic Association (JAPA)** offers insightful and broad-based original articles, ground-breaking research, thoughtful plenary addresses, in-depth panel reports, perceptive commentaries, plus much more. Included in each issue is the esteemed **JAPA** Review of Books, which provides comprehensive reviews and essays on recent notable literature.

**JAPA** is available online through the SAGE Journals platform ([japa.sagepub.com](http://japa.sagepub.com)). Subscriptions include:

- Full-text access back to Volume 1, Issue 1
- Free alerting services, including contents alerts, citation alerts, and RSS feeds
- Early online access to **JAPA** articles through Online First
- Monthly updates to the Most-Read and Most-Cited articles
- Free inter-journal reference linking
- Podcasts

APsAA members receive preferred subscription rates. Subscribe today by calling (212) 752-0450, Ext 15.

Impact Factor: 0.458  
Ranking: Psychology, Psychoanalysis 5 out of 131 Psychiatry (SSCI) 124 out of 138  
Source: 2016 Release of Journal Citation Reports®, source: 2015 Web of Science Data

**SAGE**  
Publishing

**APsAA**  
AMERICAN  
PSYCHOANALYTIC  
ASSOCIATION  
[www.apsaa.org](http://www.apsaa.org)