

CHICAGO



APSAA

A M E R I C A N

PSYCHOANALYTIC

A S S O C I A T I O N

101st Annual Meeting

June 12–17, 2012

FINAL PROGRAM

*Palmer House Hilton Hotel
Chicago, IL*

www.apsa.org

GENERAL INFORMATION

What does it mean when a session is marked "Closed"?

It means that during pre-registration, the maximum enrollment was reached for that particular session. You may only attend if you pre-registered.

There is no on-site registration for sessions. If a session is not marked closed, you may attend if there is room.

Meeting Room locations can be found in the green insert in the middle of this program.

CANDIDATES' PARTY

Thursday, June 14, 2012

8:00 p.m.-11:00 p.m.

Join fellow Candidates for dinner, drinks and socializing. This party is graciously hosted by Chicago's Candidates' Association.



**Contact Gabriel Ruiz
for more details
g@brielruiz.com, 312-665-0053**



LOCAL ARRANGEMENTS COMMITTEE

A very special thank you to the following members of the Local Arrangements Committee who helped with promotion, outreach, social events and hospitality.

Elizabeth F. Feldman, Ph.D.	Sheldon J. Meyers, M.D.
Ann B. Kaplan, Ph.D.	Caryle Perlman, M.S.
Phil S. Lebovitz, M.D.	Gabriel Ruiz, M.A., LCPC
Bonnie E. Litowitz, Ph.D.	Neal Spira, M.D.

WELCOME NEWCOMERS!

We're glad you're here.

Feel free to stop an APsaA staff member during the conference if you have any questions. You can easily recognize us by the red ribbon we will be wearing on our name badge.

Are you wearing your badge?

Name badges are required to attend all sections of the scientific program.

Your badge is your passport to attend the program sessions and the only way we can tell you have registered for the meeting.

Badges must be worn in plain sight to gain access to APsaA's meeting. Individuals who are not wearing their name badge or not wearing the correct name badge will be asked to properly register for the meeting.

SAVE THE DATE!

2013 National Meeting

January 15-20, 2013

Waldorf Astoria Hotel

New York City, New York

102nd Annual Meeting

Date and City to be Announced

**For your privacy and comfort,
single-occupancy restrooms are located
in the lobby across from the Front Office.**

CONFIDENTIALITY

Confidentiality is of the utmost importance to APsaA and we would like to remind you about a few key issues concerning confidentiality at the Meeting:

- Material presented in all sessions must not be written about or discussed outside the group itself in the service of protecting confidentiality of any patient discussion.
- Use appropriate disguise and/or informed consent when talking about a patient. Even when demographic variables have been changed, specific details included in clinical material can reveal a patient's identity to those who know him and should be avoided where possible.

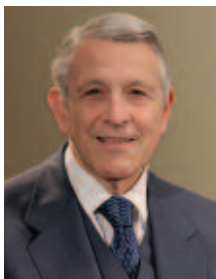
- If a registrant attends a session in which clinical material is being presented and discussed and the registrant thinks that they recognize the identity of the patient, they should protect the patient's confidentiality by quietly excusing themselves from the remainder of that session.
- Special care must be taken to avoid conversations about clinical material in halls and elevators.
- Emails and Internet postings about the clinical material should be absolutely avoided.

Attendance at APsaA's meetings are dependent upon the participant's agreement to maintain this confidentiality. We're sure you can appreciate the importance of this issue and we thank you for your cooperation.

On the Cover

The Chicago skyline is one of the world's most impressive, with three of the tallest building in the U.S.: the Willis Towers (a.k.a. the Sears Tower), Trump International Hotel and Tower and the Aon Center. Referred to variously as the Windy City, Second City, Chi-Town, Chicago attracts millions of tourists annually who come to enjoy world class museums, dining and shopping. This picture, of the north skyline from Monroe Harbor, is easy to get to by walking east (towards the lake) on Monroe Street.

WELCOME TO THE 101ST ANNUAL MEETING



Dear Colleague,

It is my pleasure to welcome you to the American Psychoanalytic Association's 101st Annual Meeting. My thanks go to the Program Committee and its chair, Kimberlyn Leary, for organizing an exceptional schedule of sessions.

I am looking forward to listening as the Presidential Symposium speaker, former Congressman Patrick Kennedy, discusses his One Mind for Research Project. All those who are committed to the field of mental health have a vested interest in this project and the work that is being done to create an environment in which research can be widely shared rather than conducted in narrow disease-specific silos. It is Mr. Kennedy's hope that this open approach to scientific research will lead to a better understanding of how the brain works and can be healed.

Nathan Szajnberg will deliver the Ernst and Gertrude Ticho Memorial Lecture, his topic is Mimesis: Re-presentations of Inner life in Western Literature and Their Contributions to Psychoanalytic Views of Humankind. In what promises to be intellectually stimulating talk that will leave many members thinking for hours afterwards, Dr. Szajnberg will explore the evolution of how the inner life of the mind (and by extension, psychoanalytic concepts) are represented in literature from ancient to modern times.

In his Winter/Spring TAP article, Neil Spira leaves no doubt that Chicago is the best place to be in June, as he recommends excursions attendees can take in their copious spare time. A foray that is particularly tempting is the evening of classical music in Millennium Park being hosted by the Local Arrangements Committee.

Finally, all interested members should be sure to attend Friday morning's Business Meeting, during which the presidency of APsaA will transition from me to Bob Pyles and Mark Smaller, a Chicago native son, will be installed as president-elect.

Thank you for taking the time from your schedules to join us here in Chicago.

Sincerely,

Warren R. Procci, M.D.
President

TABLE OF CONTENTS

Confidentiality	inside front cover
A Glossary to the Scientific Program	2
Registration & Exhibit Hours	3
Exhibitors	3
Daily Schedule	4-29
Tuesday	4
Wednesday	4
Thursday	12
Friday	22
Saturday	25
Sunday	29
Continuing Professional Education Credit	30
APsaA Officers, Program Committee and Staff	31
Program Participants	32-33

SOCIAL EVENTS

THURSDAY, JUNE 14, 2012

7:45 a.m.-8:15 a.m.

Breakfast Gathering for Candidate Members
(see page 12)

12:30 p.m.

Candidate Dutch Treat Lunch (see page 16)

8:00 p.m.-11:00 p.m.

Candidates' Party (see inside front cover)

FRIDAY, JUNE 15, 2012

6:45 p.m.-8:30 p.m.

**Gertrude and Ernst Ticho Memorial
Lecture Reception** (see page 25)

SATURDAY, JUNE 16, 2012

7:30 p.m.

**An Evening of Classical Music
in Millennium Park** (see page 29)

A GLOSSARY TO THE SCIENTIFIC PROGRAM

ONLY THESE SESSIONS ARE ELIGIBLE FOR CONTINUING PROFESSIONAL EDUCATION CREDIT

IMPORTANT DISCLOSURE INFORMATION FOR ALL LEARNERS:

None of the planners and presenters of this CME program have any relevant financial relationships to disclose unless specifically noted.

Committee Sponsored Workshops

Various days and times

Sponsored by a standing committee of the American Psychoanalytic Association, these workshops emphasize the exchange of ideas and the demonstration and application of techniques based on the mission statement of the committee.

Discussion Groups

Wednesday & Thursday 9:00 a.m.-11:00 a.m.
. 2:00 p.m.-4:00 p.m.
. 4:30 p.m.-6:30 p.m.

Permits a small number of participants to discuss a topic of mutual interest. Discussion groups meet regularly at bi-annual meetings. This continuity offers the opportunity to build collaborations with colleagues nationally and internationally. New participants are welcome to each group.

Senior Analyst Presentation Program

Wednesday 9:00 a.m.-12:00 noon
. 2:00 p.m.-4:00 p.m.

A senior analyst presents process material illustrating his/her own analytic work. Registration for the Senior Analyst Presentation is limited to candidates and students. Please contact Ethan M. Grumbach, Ph.D. (grumbach@pacbell.net) indicating your interest to participate and preregister for the presentation. If you are a candidate or student, please mention where your studies take place. Space is limited, so please preregister.

Two-Day Clinical Workshops

Wednesday & Thursday 4:30 p.m.-6:30 p.m.

Demonstrates and explores the specific manner in which a distinguished psychoanalyst listens to clinical material and conceptualizes process and technique. **Pre-Registration is required. Seats are limited.**

Research Seminar

Wednesday 4:30 p.m.-6:30 p.m.

Fellows of the American Psychoanalytic Association briefly present their current research studies in psychoanalytic psychotherapy, psychoanalysis, and applied psychoanalysis.

Oral History Workshop

Thursday 9:00 a.m.-12:30 p.m.

Explores the history of psychoanalysis through presentations by analysts and related professionals.

Candidates' Forum

Thursday 2:00 p.m.-4:00 p.m.

Devoted to the demonstration and exploration of innovative techniques in psychoanalytic education.

Special Programs for Psychiatric Residents, Psychology and Social Work Students

Thursday 4:30 p.m.-7:00 p.m.
Friday 2:00 p.m.-4:30 p.m.
Saturday & Sunday 9:00 a.m.-11:30 a.m.

Four sessions directed to psychiatric residents, psychology and social work students but open to all registrants. The format is a lecture on a particular topic by the designated faculty member, followed by a case presentation by a participant in APsA's Fellowship Program.

Film Workshop

Thursday 7:30 p.m.-10:30 p.m.
Saturday 2:00 p.m.-5:00 p.m.

Films that are related thematically through their psychoanalytic relevance are shown and interpreted by formal discussants and the audience.

Plenary Address

Friday 9:45 a.m.-11:15 a.m.

Major address by outstanding psychoanalysts or other professionals.

Candidates' Council Scientific Paper Prize/

Candidates Writing Workshop

Friday 11:30 a.m.-1:30 p.m.

The Candidates' Council Scientific Paper Prize is awarded annually to the best paper by a candidate on a topic of psychoanalytic interest. The Writing Workshop will explore how to write a successful paper.

Symposia

Saturday 12:00 noon-1:30 p.m.

Friday 12:00 noon-1:30 p.m.

This format explores the interface between psychoanalysis, society and related disciplines. Many attempt to demonstrate how psychoanalytic thinking can be applied to non-psychoanalytic settings.

Panels

Friday 2:00 p.m.-5:00 p.m.

Saturday 9:00 a.m.-12:00 noon

. 2:00 p.m.-5:00 p.m.

Sunday 9:00 a.m.-12:00 noon

Panels bring together nationally recognized psychoanalysts to present papers on clinical and theoretical topics. Active interchange with the panelists is encouraged in response to questions from the audience.

Scientific Papers

Friday 2:00 p.m.-5:00 p.m.

Saturday 9:00 a.m.-12:00 noon

. 2:00 p.m.-5:00 p.m.

Selected by a juried review process, papers are presented by the author and considered by a formal discussant. Ample time is allotted for the audience to respond.

Psychoanalysis and Health Care Reform

Friday 2:00 p.m.-3:30 p.m.

Focuses on crucial health legislation currently being considered in Washington, and how it will directly affect your practice.

University Forum

Friday 2:00 p.m.-5:00 p.m.

Psychoanalysts will engage with academic presenters for a dialogue across disciplines.

Gertrude and Ernst Ticho Memorial Lecture

Friday 5:15 p.m.-6:45 p.m.

The Gertrude and Ernst Ticho Memorial Lecture is given by an early to mid-career analyst who is currently making contributions to psychoanalysis and shows promise of making significant future contributions to psychoanalytic science, practice, and thought. The lecture is supported by a generous grant from the Gertrude and Ernst Ticho Charitable Foundation.

Discussion with the Committee on Scientific Activities

Saturday 7:00 a.m.-9:00 a.m.

Interested participants discuss the use of personal computers for psychoanalytic studies.

Coffee with a Distinguished Analyst

Saturday 7:30 a.m.-8:45 a.m.

A distinguished analyst is invited to meet with participants and candidates to discuss topics that are relevant to psychoanalytic training.

Meet-The-Author

Saturday 2:00 p.m.-5:00 p.m.

The author of a recent book of psychoanalytic interest discusses the work with other colleagues in panel format.

REGISTRATION & EXHIBITS

Registration will be located on the 6th floor.

Wednesday, June 13

Registration 8:00 a.m.-5:00 p.m.
Exhibits 1:00 p.m.-5:00 p.m.

Thursday, June 14

Registration 8:00 a.m.-5:00 p.m.
Exhibits 8:30 a.m.-5:00 p.m.

Friday, June 15

Registration 8:00 a.m.-5:15 p.m.
Exhibits 8:30 a.m.-5:15 p.m.

Saturday, June 16

Registration & Exhibits 8:30 a.m.-5:00 p.m.

Sunday, June 17

Registration & Exhibits 8:30 a.m.-12:15 p.m.

Headquarters and Press Room: 6th Floor Registration Area

EXHIBITORS

APsaA is pleased to have the participation of the following exhibitors:

101ST ANNUAL MEETING EXHIBITORS

Association Book Exhibit

9423 Old Mountain Vernon Road
Alexandria, VA 22309
Phone: (703) 619-5030
www.bookexhibit.com

Frenkel and Company

Harborside Financial Center
601 Plaza 3, 6th Fl
Jersey City, NJ 07311
Toll Free: (800) 373-6535
www.frenkel.com

Hungry Mind Recordings

6745 Moore Drive
Oakland, CA 94611
Phone: (510) 338-0950
www.hungrymindrecordings.com

International Psychoanalysis & Symposium 2012 and IPBooks.net

25-79 31st Street
Astoria, NY 11102
Phone: (718) 728-7416
www.internationalPsychoanalysis.net

The Menninger Clinic

12301 Main Street
Houston, TX 77035
Toll Free: (800) 351-9058
www.menningerclinic.com

Psychoanalytic Electronic Publishing

Phone/Fax: (949) 496-7379
www.p-e-p.org

SAGE

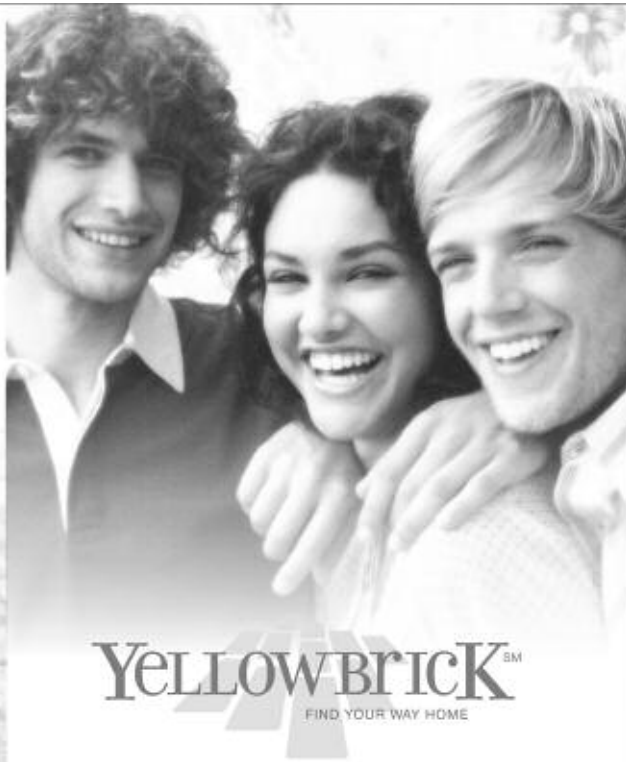
2455 Teller Road
Thousand Oaks, CA 91320
Toll Free: (800) 818-7243
www.sagepub.com

Wiley-Blackwell

350 Main Street
Malden, MA 02148
Phone: (781) 388-8200
www.wiley.com/wiley-blackwell

The Yellowbrick Program

One Rotary Center
1560 Sherman Avenue, Suite 400
Evanston, IL 60201
Toll Free: (866) 364-2300 ext 233
www.yellowbrickprogram.com



YELLOWBRICKSM

Specialization with the developmental phase of emerging young adulthood.

- Treatment resistant & Co-occurring disorders
- Trauma Recovery, Addictions, Eating Disorders

Real-time immersion in community roles and responsibilities within an intensive (30-plus hours a week) program delivered and directed by senior professional staff.

Research-based model combines neuroscience, strength-based approaches, in-depth psychotherapy and integrative medicine.

A complete spectrum of levels of care:
The Residence, Supported Apartment Services, and IOP.

For more information, contact Yellowbrick today. Mimi Neathery, PsyD, 847 869-1500 x233 or visit www.yellowbrickprogram.com

YELLOWBRICKSM
FIND YOUR WAY HOME

FIND YOUR WAY HOME

DAILY SCHEDULE

TUESDAY, JUNE 12, 2012

8:30 a.m.-3:00 p.m.

**Administrative Meeting:
Association of Administrators Meeting**

This meeting is open to administrators of APsaA's accredited training institutes, centers and affiliated societies and study groups.

9:00 a.m.-12:00 noon

**Committee Sponsored Workshop 1:
COCAA Workshop: Clinical Process
and Child Analysis** **CEC**

Co-chair: Charles Parks, Ph.D. (Bethesda, MD)

Co-chair &

Presenter: Adele Kaufman, LCSW (Chicago, IL)

Detailed clinical material from the analysis of a child, the psychotherapy of a child and the analysis of an adult will be presented to compare the clinical process and therapeutic action in each modality. Discussion of this material will focus on ways in which attention to the nature of the clinical process in child analysis can provide a valuable window into the developmental forces at play and the technical challenges in adult analysis. The aim of this workshop is to engage participants in discussions of the ways in which experiences and ideas from child analysis can inform work with adults as well as child psychotherapy.

After attending this session, participants should be able to: 1) Identify key aspects of analytic process and therapeutic action in child and adult psychoanalysis; 2) Describe ways in which awareness of approaches to child analysis and child development can enhance analytic work with adults and psychotherapy with children.

2:00 p.m.-4:30 p.m.

**Committee Sponsored Workshop 2:
Directors of Institutes and Education
Committee Chairs Workshop** **CEC**

Co-chairs: Elizabeth Brett, Ph.D. (Woodbridge, CT)

Daniel H. Jacobs, M.D. (Brookline, MA)

This workshop will address ways in which institutes can ensure their vitality and survival by attracting candidates, as well as patients for those candidates. Additional issues under discussion will include the ways in which the current TA immersion requirements affect institutes, what should be required of analysts who wish to treat candidates, and how to reincorporate society/institute members who feel marginalized.

After attending this session, participants should be able to: 1) Recognize two new methods of assessing candidate progression; 2) Describe the updates for regular TA/SA and waiver applications.

WEDNESDAY, JUNE 13, 2012

8:00 a.m.-5:00 p.m.

**Administrative Meeting:
Board on Professional Standards**

APsaA's Board on Professional Standards (BOPS) is responsible for establishing and maintaining standards for psychoanalytic education and clinical training in APsaA-approved psychoanalytic training institutes. BOPS consists of two representatives from each approved or provisionally approved training institute and one representative from each approved or provisionally approved new training facility for the teaching of psychoanalysis recognized by this association.

The Board on Professional Standards meeting is open to any member of the association except when there is a need for BOPS to be in executive session.

9:00 a.m.-11:00 a.m.

**Discussion Group 1: Psychoanalysis
and Spirituality** **CEC** **PSYT**

*Chair: Paula J. Hamm, M.A., LPC
(Centreville, VA)*

Presenter: David Hershey, M.D. (Dallas, TX)

Discussant: Arnold D. Tobin, M.D. (Chicago, IL)

This discussion group will focus on a clinical case raising questions surrounding the nature of love and sexual impulses. What impact does the analyst's openness to uncanny spiritual experiences play in understanding the patient's inner world when a "bruja" is introduced from the patient's point of view? Dr. David Hershey will offer clinical material and Dr. Arnold Tobin will discuss the cultural framework and theoretical formulation to include Eros embraced and denied to facilitate ego development of body, mind and spirit.

After attending this session, participants should be able to: 1) Analyze patient's religious/spiritual themes to include one's earliest relationships; 2) Draw on the importance of integrating sexual and spiritual themes into treatment.

TUESDAY-WEDNESDAY

DAILY SCHEDULE

9:00 a.m.-11:00 a.m. (continued)

Discussion Group 2: Shame Dynamics: Hurt Feelings and Psychoanalytic Etiquette: The Importance of Timing, Dosage, and Tact in the Analytic Encounter

Chair &

Presenter: *Melvin R. Lansky, M.D.*
(Los Angeles, CA)

Co-chair: *Leon Wurmser, M.D. (Towson, MD)*

Because the analyst experiences much more exposure than the analysand, shame is inevitable in the analytic encounter. The old maxim that the analyst should deploy timing, dosage, and tact when doing psychoanalytic work is predicated on the vulnerability to exposure and shame that the analysand undergoes even within the most gentle analytic dyad. A chance encounter with an etiquette book was the stimulus to Dr. Lansky's exploration of this issue. Etiquette books are manuals organized around raising awareness and avoiding shame by prescribing consistent comportment in situations in which shame may result in situations involving guests and hosts and those in which there are differences of age, gender, and rank of one sort or another.

After attending this session, participants should be able to: 1) Describe the inherently shame producing effect of the asymmetry of the analytic encounter; 2) Recognize the complexity of the old injunction to use timing, dosage, and tact in analytic work in the light of the dynamics of hurt feelings.

Discussion Group 3: Forgotten Analysts and Their Legacies

Co-chairs: *Zvi Lothane, M.D. (New York, NY)*
Joseph Reppen, Ph.D. (New York, NY)

Presenter: *Michael I. Good, M.D. (Brookline, MA)*

This sixth presentation will feature the contributions of Elvin Semrad (1909-1976) who was among the most influential and beloved teachers of his generation in the Boston area. Semrad's psychiatry was one of affects and bodily feelings. His rich, wise and inimitable approach was not just classically psychoanalytic, or existential, or ego-oriented, or self-psychological, or interpersonal/relational or even humanistic or adaptational. It was instead all of these in a unique integration geared toward elucidating patients' experience that arrested them during their lifetime and their avoidance of "acknowledging, bearing and putting into perspective" what they were up against. A video will show Dr. Semrad interviewing a patient.

After attending this session, participants should be able to: 1) Recognize the creative mind of Elvin Semrad; 2) Draw a deeper knowledge of a significant aspect of psychoanalytic history particularly in the Boston area.

Discussion Group 4: Infant Mental Life and the Dream in Psychoanalysis: Working with the Dreams of a Young Woman: How I Gave Up My Personality to Save My Mother

Chair: *Bernard W. Bail, M.D. (Beverly Hills, CA)*

Co-chair &

Presenter: *Loren Weiner, Ph.D.* (Los Angeles, CA)*

This discussion group will focus on the case presentation of a patient in the early phase of treatment. Process material, including a detailed description of dreams and associations, will highlight the relationship between early mental life and pathology. The discussion group will also show how the dream can be used to guide the analyst in uncovering the essential unconscious situation that must be understood in any given hour to allow the mind to grow and to help "locate" where in unconscious time and space the patient is living and who she is unconsciously being.

After attending this session, participants should be able to: 1) Describe how dreams can illuminate the infantile origins of pathology and deepen the analytic process; 2) Demonstrate an increased knowledge of working clinically with dream material.



Discussion Group 5: Facing the Facts: Self-disclosure and the Analytic Relationship

Chair: *Stephanie Brody, Psy.D. (Lexington, MA)*

None of us will escape the experience of personal loss, illness, aging, or mortality. Yet we have, as analysts, spent little time addressing this topic within a public arena. This discussion group will focus on the intrusion of the analyst's personal life into the therapeutic relationship and how to work with the inevitability of self-disclosure, the wish for privacy, and the evolution of analytic identity within these contexts. Self-disclosure provides us with a useful lens within which we may explore the shifting landscape of our field, the applications of a one-person or two-person psychology, and the existential limitations that are part of life.

DAILY SCHEDULE

9:00 a.m.-11:00 a.m. (continued)

After attending this session, participants should be able to: 1) Compare theoretical perspectives regarding self-disclosure from one-person vs. two-person psychologies; 2) Improve the capacity to work with our patients and support our colleagues when challenging personal events intrude within the analytic dyad.

9:00 a.m.-12:00 noon

Senior Analyst Presentation Program**(Part 1)** **CEC** **CND**

Chair: Ethan M. Grumbach, Ph.D.
(Los Angeles, CA)

Presenter: Don Spivak, M.D. (Birmingham, MI)

Please Note: This program is open to candidate members and students only. Your registration for this session is subject to the approval of the session chair. Space is limited so please pre-register. This is a two-part session. Because of limited space, we ask all participants for this program to register for both parts. Part 2 takes place 2:00 p.m.-4:00 p.m.

Participants in this session will be able to demonstrate an understanding of specific techniques utilized by a senior analyst during the presentation. The format of the program will provide a discussion of an analytic week of clinical case material presented with great detail.

After attending this session, participants should be able to: 1) Describe the various ways of listening to material; 2) Identify the theoretical concepts that may influence their capacity to understand the analytic process.

11:30 a.m.-1:30 p.m.

**Professional Development Workshop 1:
Social Media 101**

Chair: Mark D. Smaller, Ph.D. (Chicago, IL)
Co-chair: William H. Braun, Psy.D. (New York, NY)
Presenter: GERALYN LEDERMAN, Ph.D. (New York, NY)

With so many patients using sites like Facebook, LinkedIn, and Twitter to communicate and connect, it is important for psychoanalysts to have a basic grasp of what these technologies are, whether or not they choose to use them. During this workshop participants will be introduced to popular social media sites, learn how they are used, and discuss the professional implications of their use. Discussion will include the personal and professional rewards of engaging in social media, as well as privacy concerns for both patient and analyst.

12:00 noon-1:30 p.m.

**Committee Sponsored Workshop 3:
The Business of Practice Workshop:
Building and Maintaining Psychoanalytic
and Psychotherapy Practices** **CEC** **CND** **PSYT**

Chair: Carol Reichenenthal, Ph.D.* (Brookline, MA)
Co-chair: Judith F. Logue, Ph.D.* (Princeton, N.J.)
Presenters: Susan McNamara, M.D.*
(Middletown, CT)
Fred L. Griffin, M.D. (Dallas, TX)
Kim Gele, Ph.D. (New York, NY)
Donald McDevitt, M.S., LCPC
(Chicago, IL)

Open to all interested attendees. A roundtable discussion focused on psychotherapy and psychoanalytic practice building. Panelists from different professional disciplines will present their experiences across various stages of practice building and discuss these with the group. We invite you to join us to pool experiences about managing the "business of practice." We'll share questions and solutions to common dilemmas. Topics include but are not limited to: office arrangements, referral networks, practice promotion, insurance, fees, office policies, billing, supervision, peer group supervision. We encourage you to email the chair (carolreichenenthal@verizon.net) before the roundtable with your topics of interest and/or questions.

After attending this session, participants should be able to: 1) Understand the issues involved in practice building dilemmas from a business perspective and a clinical perspective; 2) Identify the questions most pressing in each participant's own practice building and compare different approaches.

**Committee Sponsored Workshop 4: COPE
Workshop for Child/Adolescent Supervisors
and Associate Child/Adolescent Supervisors:
Working with Common Learning Problems
of the Supervisee** **CEC** **PSYT**

Chair: Paula G. Atkeson, Ph.D.
(Washington, DC)
Co-chair: Anita G. Schumkler, D.O.
(Wynnewood, PA)
Presenter: Gabriel Ruiz, M.A., LCPC (Chicago, IL)

This workshop is open to child/adolescent supervisors and associate child supervisors. Issues will be explored that arise during the supervision of candidates and affiliated professionals who are treating child and adolescent patients. Discussion will focus on the supervision of clinical and technical issues which are unique to child and adolescent psychoanalysis and psychotherapy. Special attention

DAILY SCHEDULE

12:00 noon-1:30 p.m. (continued)

will be given to ethical matters that arise in treating children and adolescents and in work with parents. Supervisory sessions will be presented to provide clinical material for discussion.

After attending this session, participants should be able to: 1) Describe the issues unique to the supervision of supervisees treating child/adolescent patients with special attention to ethical issues; 2) Generate supervisory approaches to facilitate the learning process of the supervisee including techniques to address supervisee's learning problems.

Service Member and Veterans Initiative: Discussion of Psychoanalysts' Activities **CEC** **SOC**

The Service Member and Veterans Initiative invites interested attendees to join a discussion session where ideas and information about programs and activities addressing the needs of service members, veterans, their families and those who care for them will be shared. The current and future role of the American Psychoanalytic Association and its members in serving this population will be explored. Dr. Harold Kudler will lead this session.

2:00 p.m.-4:00 p.m.

Senior Analyst Presentation Program (Part 2) **CEC** **CND**

For description and educational objectives see Part I at 9:00 a.m.

Discussion Group 6: History of Psychoanalysis: The Pivotal Role of the Analyst's Own Analysis: The Cases of Erik Erikson and Helene Deutsch **CEC**

Chair: Peter L. Rudnytsky, Ph.D., LCSW
(Gainesville, FL)

Presenter: James William Anderson, Ph.D.*
(Chicago, IL)

The experience of one's own analysis plays a crucial role in how each analyst approaches both the theory and practice of psychoanalysis. Drawing on a book in progress, James W. Anderson will focus on Helene Deutsch and Erik Erikson. Deutsch, whose first analysis was with Sigmund Freud, became a fierce defender of orthodoxy but also introduced significant innovations, including the "as-if personality," a forerunner of later conceptions of personality disorders. Erikson, whose analyst was Anna Freud, proposed an influential model of adolescent development based on his idea of identity formation. This can be seen as a reaction against the view of adolescence held by Anna Freud at the time of his analysis. Participants will be invited to share their insights both scholarly and personal.

After attending this session, participants should be able to: 1) Critique the psychoanalytic theories of Erikson and Deutsch; 2) Identify how their stances with patients have been influenced by their own experiences in analysis.

Discussion Group 7: The Role of the "Archaic Superego" in Individual and Cultural Pathology **CEC**

Chair &

Presenter : Leon Wurmser, M.D. (Towson, MD)

This session will be a continued in-depth study of the totalitarian, implacable, often sexualized nature of the archaic superego, its relationship with severe childhood traumatization and family pathology, as well as its connections with history. Its importance in dealing with the "negative therapeutic reaction" will be studied with the help of an in-depth case presentation.

After attending this session, participants should be able to: 1) Identify the phenomena of the archaic superego, especially in form of the "negative therapeutic reaction," and how to deal with them with as little judgment as possible; 2) Recognize patients' tendencies to provoke punishment and elicit humiliation.

Discussion Group 8: Perversions and Perverse Dynamics: Psychoanalytic Concepts and Treatment **CEC**

Chair: Joseph P. Collins, D.O. (Bethesda, MD)

Presenter: David Hershey, M.D. (Dallas, TX)

Discussant: Arlene K. Richards, Ed.D. (New York, NY)

This discussion group will focus on perversions and perverse dynamics in analytic patients. Psychoanalytic theories and techniques offer effective ways to understand and address these psychic phenomena. In recent years there has been an increased interest about perversions in women. The presenter has notably published on this topic. Dr. David Hershey will be providing clinical material which will help participants to understand this dynamic presentation in women. The interrelationship between character issues and perverse thought process will be explored. Transference and countertransference will be described to highlight the perverse dynamic process. Clinical interventions to address the perverse process will be discussed.

After attending this session, participants should be able to: 1) Identify the phenomena of perversions and perverse process in women; 2) Describe how to apply this understanding to clinical analytic practice.

DAILY SCHEDULE

2:00 p.m.-4:00 p.m. (continued)

Discussion Group 9: Writing and Interviewing for Certification **CEC** **CND**

Chair & Presenter: David A. Turner, M.D. (Portland, OR)

Members of the Certification Examination Committee (CEC) and participants will discuss a written case together. Participants will observe how the CEC functions and will also participate as committee members in discussing the case. Participants are encouraged to ask the CEC members whatever questions they might have about case write-ups, the interviews, and the workings of the committee.

After attending this session, participants should be able to: 1) Recognize better ways to write up cases to submit to the Certification Examination Committee (CEC); 2) Distinguish and describe the interview process and the functioning of the CEC.

NEW **Discussion Group 10: Psychoanalytic Perspectives on Women and their Experience of Competence, Ambition and Leadership** **CEC** **PSYT** **SOC**

Co-chairs: Stephanie Brody, Psy.D. (Lexington, MA)
 Frances Arnold, Ph.D. (Cambridge, MA)
 Presenter: Mary K. McCarthy, M.D. (Brookline, MA)

This discussion group will compare psychoanalytic perspectives on women through the lens of leadership and ambition. As women continue to gain unprecedented prominence and influence in business, government, medicine and law, our own field is inspired by postmodern psychoanalytic ideas regarding female ambition and the desire for success. Though these theories have resolved to abandon the notion of women as unequipped, theoretical rifts and biases continue to dominate psychoanalytic practice and may lead the public to believe that our field is indeed “behind the times.” If psychoanalysis intends to sustain its role as reflective partner with the contemporary woman, isn’t it time for us to re-examine what we think about power, success, choice, and desire?

After attending this session, participants should be able to: 1) Describe the relevance of modern gender theories for understanding female patients in light of their, often, complex reactions to ambition and leadership; 2) Describe how the perpetuation of previous psychoanalytic notions of women’s development continue to play a complex role in shaping analytic understanding and process around women’s experiences and concerns about ambition and leadership.

NEW **Discussion Group 11: Psychoanalysis and Psychotherapeutic Hospitals** **CEC** **PSYT**

Chair: M. Sagman Kayatekin, M.D. (Missouri City, TX)
 Co-chair: Michael D. Groat, Ph.D.* (Houston, TX)

Dr. M. Sagman Kayatekin is a psychoanalyst and co-chair. Dr. Michael Groat is a psychoanalytic therapist. They were trained in psychoanalytically informed hospitals and psychoanalytic institutes. There they combined psychoanalytic hospitalist work with private psychoanalytic/psychodynamic practice. These dual training and practice tracks provided an interesting contrast which led to this new discussion group. Two modes of theorizing come from these different backgrounds: one, which has been the subject of much more exploration, focuses on the therapeutic dyad, the other, less explored approach, emphasizes the patient’s dynamics within the context of family, group, and therapeutic milieus. The focus of this discussion group will be the exploration of whether these two traditions can enrich and enhance one another.

After attending the session participants should be able to 1) Recognize regressions of individuals in the context of dyads or families as an aspect of pathology; 2) Formulate therapeutic interventions with this larger frame in mind.

4:30 p.m.-6:30 p.m.

Research Seminar: Exploring the Role of Gender in the Clinic and Society **CEC** **PSYT** **SOC**

Chair: Charles Amrhein, Psy.D.* (Bronx, NY)
 Presenters: Darren Del Castillo, Ph.D.* (Goleta, CA)
 Sarah Juul, M.D.* (Decatur, GA)
 Discussants: Sidney H. Phillips, M.D. (New Haven, CT)
 Stuart W. Twemlow, M.D. (Houston, TX)

The exploration of gender has deep roots in psychoanalysis, called by Mark Blechner “the once and future queer science.” While psychoanalysis has theorized many aspects of gender, this panel brings diverse research projects into dialogue with psychoanalysts to create a space for shared learning. Darren Del Castillo will present on “Male Psychotherapists Constructing the Intersection between Gender and Professional Identity: A Narrative Inquiry,” including implications for male gender-inflected countertransference. Sarah Juul will present on “Gender Roles and Sexual Violence in KwaZulu-Natal, South Africa,” examining the role of economic dependence in victimization by sexual violence.

DAILY SCHEDULE

4:30 p.m.-6:30 p.m. (continued)

After attending this session, participants should be able to: 1) Describe how masculinity intersects with professional identity in male psychotherapists; 2) Explain how economic self-sufficiency in a culture with high rates of sexual violence is protective against such violence.

Two-Day Clinical Workshop #1 (Part 1): Workshop Series in Analytic Process and Technique **CEC**

Chair: Irene Cairo, M.D. (New York, NY)
Presenter: Alison Phillips, M.D. (Wellesley, MA)
Discussant: Danielle Quinodoz, Mme* (Geneva, Switzerland)

This is a two-part session. Part 2 will take place on Thursday at 4:30 p.m. Participants are expected to attend both days.

In this two-day clinical workshop, a clinical presenter will present detailed case and process material to a featured discussant known especially for his or her contributions to and views on clinical process. Participants along with the featured discussant will have the opportunity to discuss this material in two sessions over two consecutive days and to observe first-hand how the featured discussant thinks clinically.

After attending this session, participants should be able to: 1) Describe how the featured discussant thinks about a specific clinical case; 2) Apply some of the featured discussant's ideas to his or her own subsequent clinical work.

Two-Day Clinical Workshop #2 (Part 1): Workshop Series in Analytic Process and Technique **CEC**

Chair: Sharon Blum, Ph.D. (Los Angeles, CA)
Presenter: Linda Marino, Ph.D. (Chicago, IL)
Discussant: Irwin Hoffman, Ph.D.* (Chicago, IL)

This is a two-part session. Part 2 will take place on Thursday at 4:30 p.m. Participants are expected to attend both days.

In this two-day clinical workshop, a clinical presenter will present detailed case and process material to a featured discussant known especially for his or her contributions to and views on clinical process. Participants along with the featured discussant will have the opportunity to discuss this material in two sessions over two consecutive days and to observe first-hand how the featured discussant thinks clinically.

After attending these sessions, participants should be able to 1) Describe how the featured discussant thinks about a specific clinical case; 2) Apply some of the featured discussant's ideas to his or her own subsequent clinical work.

Two-Day Clinical Workshop #3 (Part 1): Psychotherapy Technique and Process **CEC** **PSYT**

Chair: Alan Pollack, M.D. (Newton, MA)
Presenter: Dale Gody, Ph.D. (Wilmette, IL)
Discussant: Jose Saporta, M.D.* (Newton Highlands, MA)

This is a two-part session. Part 2 will take place on Thursday at 4:30 p.m. Participants are expected to attend both days.

This two-day clinical workshop on psychoanalytic psychotherapy offers participants an unusual opportunity to investigate the process of psychoanalytic psychotherapy in depth. At each meeting, a psychotherapist presents extended process material from an actual case over two days. Workshop participants, led by a senior clinician, join in examining the moment-by-moment process.

After attending this session, participants should be able to: 1) Comprehend the interplay of surface and unconscious determinants of psychotherapy process; 2) Apply psychoanalytic understanding to their own clinical work.

Two-Day Clinical Workshop #4 (Part 1): Workshop Series in Analytic Process and Technique **CEC**

Chair: Richard B. Zimmer, M.D. (New York, NY)
Presenter: Rita Teusch, Ph.D. (Cambridge, MA)
Discussant: Steven Cooper, Ph.D. (Cambridge, MA)

This is a two-part session. Part 2 will take place on Thursday at 4:30 p.m. Participants are expected to attend both days.

This workshop will be of interest to all clinical analysts. Dr. Cooper, Clinical Associate Professor of Psychiatry at Harvard Medical School and Joint Chief Editor of *Psychoanalytic Dialogues*, will discuss the clinical presentation, focusing on ways in which the patient in the analytic situation is compelled to communicate aspects of his internalized object relations, and on the analyst's blind spots as he listens to the patient, including the multiple meanings that these blind spots may have and functions which they may serve.

After attending this session, participants will be able to: 1) Discuss different ways in which the internalized object relations of a patient may be communicated in the analytic situation; 2) Recognize potential sources, functions, and clinical uses of the analyst's blind spots, and increased understanding of how to recognize such blind spots.

DAILY SCHEDULE

4:30 p.m.-6:30 p.m. (continued)

Child and Adolescent Two-Day Clinical Workshop (Part 1) CEC

Chair: Christine Kieffer, Ph.D. (Chicago, IL)
Presenter: Daniel Prezant, Ph.D. (New York, NY)
Discussant: Phyllis Tyson, Ph.D. (Seattle, WA)

This is a two-part session. Part 2 will take place on Thursday at 4:30 p.m. Participants are expected to attend both days.

This workshop is targeted to those interested in the practice of child and adolescent analysis. Problems that arise in the treatment of children and adolescents will be explored. Clinical material will be presented and discussed with a focus on both theory and technique. Technical and theoretical differences will be explored with national and international distinguished discussants.

After attending this session, participants should be able to: 1) Identify, describe and apply a developmental perspective to problems that arise in the treatment of children and adolescents; 2) Generate interventions based on a dynamic understanding of emotional and cognitive development.

Discussion Group 12: On Being Supervised: Bringing The Classroom into the Consulting Room CEC CND

Chair: Hilli Dagony-Clark, Psy.D. (New York, NY)
Presenter & Discussant: Peter Dunn, M.D. (New York, NY)

An essential ingredient in the supervisory process involves direct instruction of the supervisee. While the supervision is an inherently collaborative process, it nonetheless inevitably entails teaching on the part of the supervisor. Guest analyst, Dr. Peter Dunn, is a recipient of the Edith Sabshin Award, Charles Brenner Award for Contributions to Psychoanalytic Education, and Teacher of the Year Award from Mt. Sinai. In this session, he will examine the essential component of teaching in the supervisory relationship. Focusing on instruction of psychoanalytic diagnosis, he will identify key ways of tailoring classroom pedagogy to the duality of a psychoanalytic supervisory experience.

After attending this session, participants should be able to: 1) Implement teaching methods that support a supervisee's learning; 2) Create a safe learning environment to help the supervisee discuss analytic process freely.

Discussion Group 13: Contemporary Psychoanalytic Views on Masochism CEC

Chair: Nancy Kulish, Ph.D. (Birmingham, MI)
Co-chair: Deanna Holtzman, Ph.D. (Bloomfield Hills, MI)
Presenter: Melvin R. Lansky, M.D. (Los Angeles, CA)

This discussion group will explore the major contemporary psychoanalytic approaches to the treatment and understanding of masochism, characterizing a large spectrum of patients. The group features lively and informative clinical presentations by the most respected thinkers and clinicians who have made significant contributions to this area. The advantages and disadvantages of applying different technical approaches and theatrical frameworks to this difficult condition will be highlighted. All clinicians are welcome.

After attending this session, participants should be able to: 1) Describe typical diagnostic, dynamic, and developmental issues encountered in this patient group; 2) Compare different theoretical and technical approaches to the treatment of this kind of patient.

Discussion Group 14: Emerging Perspectives on Lesbian, Gay, Bisexual and Transgender Issues: How Understanding the Constructs of Nontraditional Families Can Deepen the Treatment CEC PSYT SOC

Co-chairs: Ethan M. Grumbach, Ph.D. (Los Angeles, CA)
 Patrick J. Haggard, M.D. (Atlanta, GA)
Presenter: Barbara F. Marcus, Ph.D. (New Haven, CT)
Discussant: Cary D. Friedman, M.D. (Cambridge, MA)
Reporter: Susan McNamara, M.D.* (Middletown, CT)

Members of nontraditional families increasingly present themselves for treatment in analytic settings. Different types of families occur in a wide variety of settings, and their specific functions and meanings depend largely on their relationship to other social institutions. This discussion group will demonstrate how the constructs of nontraditional families can be sensitively explored as part of an analysis. Same sex parenting, adoption, surrogacy, trans parenting and IVF within nontraditional families can require specific knowledge and understanding to increase communication between analyst and analysand. Clinical material will be presented exploring these ideas, opening up a discussion of current psychoanalytic attitudes toward nontraditional families and the impact that societal and cultural demands can have on the treatment.

DAILY SCHEDULE

4:30 p.m.-6:30 p.m. (continued)

After attending this session, participants should be able to: 1) Describe how understanding the foundation of a nontraditional family can deepen analytic explorations; 2) Recognize and utilize specific language that facilitates the exploration of nontraditional family constructs in an open and beneficial manner.

Discussion Group 15: Loss, Neglect, and Learning Inhibition: A Ten Year Old's Use of Analysis to Resume Progressive Development **CEC**

Chair: Samuel Rubin, M.D. (Birmingham, AL)
Co-chairs: Arthur L. Rosenbaum, M.D. (Cleveland Heights, OH)
Lee Ascherman, M.D. (Birmingham, AL)
Presenter: Joanne Naegele, M.A., LPCC (Cleveland Heights, OH)

The group will hear process material in the 7 ½ year analysis of a girl who began five time-per-week analysis at age ten and terminated in a planful way at age 17 ½ years. You will hear about the painful losses she experienced as well as the early neglect which resulted in learning inhibitions and a core confusion as to whether she could she be her own person with a mind of her own or if she would need to be a carbon copy of another. Through the consistency of having a “good enough” object in the analysis and a “good enough” object in her early life (a grandmother) she could use the analyst and the analytic process to resume progressive development.

After attending this session, participants should be able to: 1) Identify what to look for in an evaluation and beginning work to assess if a child and family will be able to make use of an analysis; 2) Recognize how material presents in the transference and countertransference and how to use interpretation to further the analytic process through the termination phase.

Discussion Group 16: Trauma in the Transference: Adjusting the Analytic Frame to Accommodate Severe Psychological Trauma **CEC**

Chair & Presenter: Richard K. Hertel, Ph.D. (Ann Arbor, MI)
Discussant: Leo S. Weinstein, M.D. (Chicago, IL)

Process notes will be presented from the third year of a psychoanalytic psychotherapy in which a survivor of severe childhood abuse began experiencing frequent flashbacks that were dissociated and thus unavailable to the treatment. Adjustments to the psychotherapy frame made it possible for the patient to report them.

The discussion will focus upon frame adjustments, how the reported flashes informed the therapy, and therapist and patient reactions to the changed frame.

After attending this session, participants should be able to: 1) Describe adjustments that could be made to the treatment frame to facilitate the therapeutic process and minimize countertransference enactment; 2) Identify transference and countertransference reactions to frame adjustments.

Discussion Group 17: Candidate to Candidate: Handling Displaced Affect in Analytic Treatment **CEC** **CND**

Chair: Phoebe A. Cirio, M.S.W., LCSW (Saint Louis, MO)
Presenter: Kelly M. Bradham, Ph.D. (Champaign, IL)
Discussant: Brenda Solomon, M.D. (Glencoe, IL)

This case discussion of clinical material will demonstrate that deepening treatment from psychotherapy into analysis will facilitate the emergence of conflicts, past trauma, psychic deficits, and affect that would otherwise have been unreachable with less intensive therapy.

After attending this session, participants should be able to: 1) Recognize the differences between the deficit and conflict models of psychopathology and rationales for applying one model vs. the other with a particular case; 2) Describe clinical techniques for containment and interpretation of intense affect, so as to enable the working through in psychoanalytic treatment.

Discussion Group 18: Postmodernism Feminism **CEC** **SOC**

Co-chairs: Vivian Blotnick Pender, M.D. (New York, NY)
Arlene K. Richards, Ed.D. (New York, NY)
Presenter & Discussant: Bonnie Litowitz, Ph.D. (Chicago, IL)

Using the text “History of Beauty,” by Umberto Eco, Dr. Litowitz will discuss the history of the idea of female beauty in the context of Eco’s philosophy and the post-modern view of femininity.

After attending this session, participants should be able to: 1) Discuss feminine beauty in different eras of Western civilization; 2) Reflect on how these changes in the idea of female beauty affect patients.

DAILY SCHEDULE

7:00 p.m.-9:00 p.m.

Study Group on Business Operations and Strategy

Chair: Bill Myerson, Ph.D., M.B.A.,
APsaA Treasurer

Many of our Institutes, Centers and Societies are facing a severe financial crisis. In the current climate, survival depends on having a good business plan, marketing strategy and willingness to adhere to basic business practices. Please join us for the second meeting of Institute/Center/Society leaders who have an active interest in the financial survival of their local groups. Advance RSVP to deankstein@apsa.org is essential.

THURSDAY, JUNE 14, 2012

7:45 a.m.-8:15 a.m.

Social Event: Breakfast Gathering for Candidate Members **CND**

Join colleagues from around the country for breakfast. All are welcome to stay for the Candidates' Council meeting immediately following breakfast.

8:00 a.m.-4:30 p.m.

Administrative Meeting: Executive Council

APsaA's Board of Directors, known as the Executive Council, is responsible for the management of the affairs and business of the association. The Executive Council is comprised of the association's officers, eight nationally elected Councilors-at-Large, and councilors representing each affiliate society of the association, as well as each affiliate and affiliated study group. The Executive Council meeting is open to any member of the association except when there is a need for the council to be in executive session.

8:15 a.m.-12:30 p.m.

Administrative Meeting: Candidates' Council **CND**

Please join colleagues and candidates from around the country. In attendance will be various guests including IPSO colleagues. The new Candidates' Council officers will be introduced. All candidate members are encouraged to participate in the 'memberconnect' roundtable.

9:00 a.m.-11:00 a.m.

Discussion Group 19: Anton Chekhov's "Uncle Vanya": Illusion, Self-Deception, and Endurance **CEC** **PSYT**

Co-chairs: Eva F. Lichtenberg, Ph.D.* (Chicago, IL)
Arnold D. Tobin, M.D. (Chicago, IL)

This play exemplifies Chekhov's saying that "not crises, but day to day living wears you out." Vanya and his plain unmarried niece toil ceaselessly managing the property she inherited from her late mother, Vanya's sister. Their efforts are unrecognized and unappreciated by her remarried father, an unproductive professor with accomplishments below everyone's high expectations, who visits with his much younger disillusioned beautiful wife. Characters express suffering with unrealized hopes, unrequited love, and unfinished mourning. Finding the situation intolerable, the professor leaves with his wife. The *status quo ante* resumes; Vanya and his niece resign themselves to lives of work. Please read the play or see the film "Uncle Vanya on 42nd Street" (1994).

After attending this session, participants should be able to: 1) Recognize and understand the phenomenon of idealization and the consequences of disillusionment; 2) Describe how endurance can be understood not as moral masochism but as a reasonable compromise and therefore successful life adjustment.

Discussion Group 20: Psychoanalysis and Shakespeare: Shakespeare's "The Comedy of Errors" and "The Winter's Tale" **CEC** **PSYT**

Co-chairs: Jerome M. Grunes, M.D. (Chicago, IL)
Dorothy T. Grunes, M.D. (Chicago, IL)

This session will examine two of Shakespeare's plays. Both utilize the "deus ex machina" to restore to life the mother or wife who has been destroyed — by a tempest, in "The Comedy of Errors," or as the result of the paranoid psychosis of the husband in "The Winter's Tale." This occurs only in the final scene. Unlike simple fantasy, "real" time simultaneously passes before the discovery.

After attending this session, participants should be able to: 1) Describe the unconscious desire for destruction of the significant object in the plays; 2) Recognize the subtlety in the attempt to "work through" the enormity of the object loss.

Discussion Group 21: Psychoanalytic Explorations **CEC**

Chair: Merton A. Shill, LL.M., Ph.D.
(Ann Arbor, MI)

Presenter: Arnold Goldberg, M.D. (Chicago, IL)

Every analyst applies an explicit and/or implicit theory in clinical work. This discussion group will penetrate the surface of the clinical process to discern the analyst's underlying theory of personality, thereby revealing the fundamental assumptions employed

DAILY SCHEDULE

9:00 a.m.-11:00 a.m. (continued)

in the various psychoanalytic approaches. The intent is to see through clinical technique and process to the underlying theory of personality functioning applied clinically, in each of the schools. Dr. Goldberg is one of the leading proponents of Self-Psychology and was closely associated with Heinz Kohut at the Chicago Institute for Psychoanalysis. He is a major contributor to the expansion of Kohut's contributions.

After attending this session, participants should be able to: 1) Recognize the importance of the conscious and unconscious theory employed by each clinician; 2) Analyze clinical material so as to identify and evaluate the theory underlying the analyst's work.

Discussion Group 22: The Influence of the Contemporary British Kleinians on Clinical Psychoanalysis **CEC**

CANCELLED

Discussion Group 23: Psychotherapist Associates Present: Exploring the Process and Technique of Psychoanalytic Psychotherapy **CEC** **PSYT**

Chair: Mae E. Kastor, M.S.W.* (Baltimore, MD)

Co-chair: Carol Reichenenthal, Ph.D.* (Cambridge, MA)

Presenter: Jamie Pasquale, Psy.D.* (Chicago, IL)

Discussant: Prudence Gourguechon, M.D. (Chicago, IL)

Coordinator: Marcia Polansky, M.S.W., Sc.D.* (Philadelphia, PA)

This discussion group, sponsored by the Psychotherapist Associates of the American Psychoanalytic Association and open to all registrants at this APsA meeting, will help participants to deepen their understanding of the ways in which psychoanalytic principles inform psychoanalytic psychotherapy and contribute to the progress of the treatment. Attendees will join the presenter and the discussant as they focus on clinical material. In the informal, collegial atmosphere of this discussion group, there will be opportunity for all attendees to join in the discussion.

After attending this session, participants should be able to: 1) Describe which attributes of psychoanalytic psychotherapy differentiate it from other forms of psychotherapy and contribute to its effectiveness; 2) Recognize the presence of unconscious material, the use of defenses, and the importance of the transference.

Discussion Group 24: The Termination Phase of Analysis **CEC**

Chair: Mayer Subrin, M.D. (Bloomfield Hills, MI)

Co-chair: David R. Dietrich, Ph.D. (Birmingham, MI)

Presenter: Robin L. Rayford, M.A.* (Troy, MI)

This discussion group will examine the qualities that distinguish the termination phase from the preceding stages of therapy and the developmental task that need to be accomplished during this period. Whether or not there are typical termination fantasies will be considered and the issue of resistance to and within termination as a process and phase will be considered for redefinition. Detailed clinical material will be the basis for these and other issues.

After attending this session, participants should be able to: 1) Classify termination as a distinct phase and process; 2) Recognize the unique functions, processes, sub phases, typical fantasies of a mutually arrived at ending determined by internal development.

Discussion Group 25: The Analyst's Experience of Loss and Death **CEC** **SOC**

Chairs: Anne J. Adelman, Ph.D. (Bethesda, MD)

Kerry Malawista, Ph.D.* (Potomac, MD)

Presenter: Russell Carr, M.D.* (Gaithersburg, MD)

This group has begun to explore the experience of death and loss, and more broadly, the complex issues of loneliness and isolation in the practice of psychoanalysis. Previous meetings have focused on the impact of professional losses on psychoanalytic work, and the effect of personal losses on practice, including technical issues that may arise. This session will focus on the experience of war-related trauma and loss. The group will explore the effect of cumulative trauma on the analyst's mind. Dr. Russell Carr, an active-duty U.S. Navy psychiatrist, will present clinical material. He currently serves as the Chief of the Adult Behavioral Health Clinic at Walter Reed National Military Medical Center and is a psychoanalytic candidate at ICP&P (Institute of Contemporary Psychotherapy and Psychoanalysis).

After attending this session, participants should be able to: 1) Identify the complex dynamics that arise in the face of the therapist's loss; 2) Develop a model for understanding the transference-countertransference issues inherent in the experience of the therapist's loss.

DAILY SCHEDULE

9:00 a.m.-11:00 a.m. (continued)

Discussion Group 26: Psychoanalytic Treatment of Eating Disorders and Body Image Concerns Across the Life Cycle **CEC**

Chair: Kathryn J. Zerbe, M.D. (Portland, OR)
Presenter: Winston Anderson, Psy.D.*
 (Portland, OR)

This discussion group is intended for clinicians treating patients with eating disorder and body image problems in their practices. Advances in psychoanalytic theory over the past three decades and the refractory nature of eating and body image problems without psychodynamic work support its application in this range of problems. A case in the early phase of psychoanalytic work will be presented to demonstrate how eating disorder patients benefit from interpretation, are able to dream and to fantasize, and make use of reconstructing hidden but meaningful elements of their personal history. The discussion group will begin by reviewing some literature and new research on the topic and then move to process notes of the case to actively engage the participants.

After attending this session, participants should be able to: 1) Describe three core dynamics of eating disorder patients; 2) Explain why dynamic treatments are useful for eating disorder patients.

Discussion Group 27: Opera and Psychoanalysis: Sadism in Berg's "Wozzeck" **CEC** **PSYT**

Co-chairs & Presenters: N. Lynn Buell, MSSW (Seattle, WA)
 Ralph Beaumont, M.D. (Portland, OR)
Presenter: John DiGaetani, Ph.D.* (New York, NY)

This discussion group will explore ways in which opera, as other forms of art, offers emotional, intellectual and aesthetic food for thought, which can deepen the experience and understanding of humanity. Alban Berg's *Wozzeck* certainly meets the criteria on many levels of meaning and modes of emotional and artistic expression. Dr. DiGaetani, (a Hofstra University English Professor, author of "Wagner and Suicide," "Carlo Gozzi: A Life in the 18th Century Venetian Theater," "An Invitation to the Opera," "An Afterlife in Opera," "Richard Wagner and the Modern English Novel," "Opera and the Golden West: The Past, Present and Future of Opera") who helped initiate Seattle's Opera on the Couch in 2005 and has taught a course on modern English theater in London for the last 20 years, will join Ms. Buell and Dr. Beaumont in presenting.

After attending this session, participants should be able to: 1) Utilize psychoanalytic ideas to comprehend more deeply unconscious dynamics related to the

meanings of operatic libretti and scores, and the motives of librettists, composers and characters portrayed in operas; 2) Articulate the relevance of this comprehension to common clinical phenomena.

Discussion Group 28: Love, Sex and the American Psyche: Female Perversions **CEC** **PSYT**

Chairs & Discussants: R. Curtis Bristol, M.D. (Washington, DC)
 Stefan A. Pasternack, M.D.
 (Delray Beach, FL)
Presenter: Arlene K. Richards, Ed.D. (New York, NY)

The presentation by Dr. Richards will focus on the case of a young woman whose sexual life has been dominated by fantasies which threaten her life and her family's well-being. She will explore the impact of the patient's early childhood overstimulation, neglect and narcissistic injuries on her adult fantasies and behavior. Dr. Richards will assess how treatment enables the patient to understand the connection between her early trauma, current sexual fantasies and sexual impulses. Discussion will focus on these issues and also on what constitutes a perversion today and how this may differ from previous analytic views. To what extent treatment can ameliorate a perversion will be considered.

After attending this session, participants should be able to: 1) Identify both classical and contemporary definitions and characteristics of perversion; 2) Identify etiological factors in perversion, especially the role of early trauma, neglect and narcissistic injuries.

9:00 a.m.-12:30 p.m.

Oral History Workshop #74: Child Psychoanalytic Principles in Practice: How Child Analysis Evolved in Organizations Serving**Children** **CEC** **PSYT** **SOC**

Co-chairs: Erika Schmidt, LCSW (Chicago, IL)
 Nellie L. Thompson, Ph.D.
 (New York, NY)

The historical lineage of child analysis in the U.S. reaches back to 1920s Vienna. Three Viennese emigres — Bruno Bettelheim, Anny Katan, Marianne Kris — created organizations devoted to children's welfare based on analytic principles, translating their early Viennese training and other analytic and educational influences to an American setting. As populations, needs and theories evolved, so have the institutions. Peter Myers and Diana Kon, Co-Executive Directors of the Orthogenic School will discuss this unique therapeutic milieu. Thomas Barrett, former Executive Director of Hanna Perkins Center

DAILY SCHEDULE

9:00 a.m.-12:30 p.m. (continued)

for Child Development will describe the impact and evolution of Anna Freud's legacy on their programs. Denia Barrett, past president of Association for Child Psychoanalysis, will trace the history of ACP founded as a professional home for all child analysts regardless of training or Institute affiliation.

After attending this session, participants should be able to: 1) Compare and describe recent generations of analysts with APsA's past history; 2) List regional psychoanalytic resources outside of New York City.

10:00 a.m.-11:30 a.m.

**Committee Sponsored Workshop 5:
COPE: Workshop on Supervision** **CEC**
CANCELLED

11:30 a.m.-1:30 p.m.

**Committee Sponsored Workshop 6: Committee
on Lesbian, Gay, Bisexual and Transgender
Issues Workshop: Gender Shock: Do Not Believe
What You Think** **CEC** **PSYT** **SOC**

Co-chairs: Susan McNamara, M.D.*
(Middletown, CT)
Patrick Haggard, M.D. (Atlanta, GA)

Presenters: Robert M. Galatzer-Levy, M.D.
(Chicago, IL)
Heidi J. Nast, Ph.D.*
(Professor of International Studies,
DePaul University, Chicago, IL)

Coordinator: Ethan M. Grumbach, Ph.D.
(Los Angeles, CA)

Despite recognizing that gender identity is a complex compromise formation, tolerating gender non-conformance is difficult. We still tend to favor binary gender identities and clear developmental lines, rather than embracing a stance of subversive curiosity about the variability and fluidity of "sex," gender and development. This will be a working conversation exploring both the basics of dynamic, non-linear development, and how ideas and practices of gender have varied across time and place. Please join us with your ideas, concerns and questions. The presenters specialize in the interface of complex theories of development with psychoanalytic theory, and in the emergence and codification of the dichotomies of modern "sex" and gender.

After attending this session, participants should be able to: 1) Describe new models of development drawn from the study of complex systems and their associated non-linear dynamics; 2) Examine the gender binary in new ways.

**Committee Sponsored Workshop 7: Workshop
on Teaching about Analytic Case Writing** **CEC**

Chair: Stephen B. Bernstein, M.D.
(Chestnut Hill, MA)

Co-chairs: Melvin Bornstein, M.D. (Birmingham, MI)
Jonathan Palmer, M.D. (Newton, MA)
Arthur L. Rosenbaum, M.D.
(Cleveland Heights, OH)
Peggy Ellen Warren, M.D. (Waban, MA)

The workshop will continue to discuss the teaching of analytic case writing. The focus will be on the analytic writer's situation when confronted with the blank page. Workshop leaders will demonstrate a specific technique in which the analyst, in dialogue with the chair/co-chair, is helped to find a preliminary outline for the complex interactions of a long analytic process. If they choose, attendees can volunteer to participate in this exercise, which requires almost no preparation, by contacting Dr. Bernstein in advance (sbb@massmed.org). No attendees will be called upon without volunteering. Attendees are often from institutes where clinical writing is taught. (This workshop is related to Discussion Group 43: Writing About Your Analytic Work in a Case Report", Thursday, 4:30 p.m. to 6:30 p.m.)

After attending this session, participants should be able to: 1) Describe a method for teaching how to find a preliminary structure for writing a case report; 2) Demonstrate how this method is implemented and how it can help the analyst to begin writing.

**Professional Development Workshop 2:
Website Marketing to Grow Your Practice**

Chair: Mark D. Smaller, Ph.D. (Chicago, IL)
Co-chair: William H. Braun, Psy.D. (New York, NY)
Presenter: Greer Van Dyck, M.A.* (Boulder, CO)

This workshop will provide participants with a basic understanding of website marketing. Greer Van Dyck, M.A., an Internet marketing expert with Therapysites.com, will discuss how attendees can create, launch and maximize a website to help grow a practice. Participants will learn the difference between effective and ineffective websites, and how to avoid creating the latter with quality content and good design. The fundamentals of web-based marketing will be discussed, including link creation, key word selection, and directory listings. Ms. Van Dyke will also explain how search engines like Google work and the methodology behind search result rankings.

DAILY SCHEDULE

12:30 p.m.

Social Event: Candidate Dutch Treat Lunch **CND**

Immediately following the Candidates' Council meeting, please join the Candidates' Council for a Dutch Treat lunch. Please sign up on the bulletin board near the registration desk or at the Candidates' Council meeting.

2:00 p.m.-4:00 p.m.

Candidates' Forum: Developing a Psychoanalytic Mind and Identity **CEC** **CND**

Chair: Phoebe A. Cirio, M.S.W., LCSW
(St. Louis, MO)

Presenters: Carlos Almeida, M.D. (New York, NY)
Deisy C. Boscan, Ph.D. (San Diego, CA)
Robin Deutsch, Ph.D. (Oakland, CA)
Ilene Dyller, Ph.D. (Philadelphia, PA)
Navah C. Kaplan, Ph.D. (New York, NY)

Forum members, all candidates or recent graduates, will describe and reflect on significant personal and clinical experiences that shaped their development as psychoanalysts, and helped form their psychoanalytic identity. They will illustrate how these experiences helped them to develop a method for psychoanalytic knowing and understanding of process, which is invaluable for clinical psychoanalytic work.

After attending this session, participants should be able to: 1) Enumerate factors that facilitate the development of a psychoanalytic mind and identity that is useful for clinical work; 2) Detail clinical techniques for observing and making use of clinical process.

Discussion Group 29: Deepening the Treatment **CEC** **PSYT**

Chair: Jane S. Hall, LCSW, FIPA (New York, NY)
Presenters: Marcia Kaplan, M.D. (Cincinnati, OH)
Maurine Kelly, Ph.D. (Silver Spring, MD)

Many, if not most, patients can benefit from intensive psychotherapy. How to engage these patients in deepening the treatment as opposed to the once-a-week counseling they frequently ask for is the topic of this discussion group. One focus will be strengthening the therapist's conviction and fostering his/her skill in allowing the patient to consider the commitment involved in ongoing treatment. Roadblocks that impede progress and the feelings psychoanalysts experience (countertransference) when impasse threatens will be discussed. Several vignettes will be presented after which the floor will be open to participants to speak informally about their experiences with deepening; to ask questions about

the vignettes; and to discuss with each other exactly what deepening the work means to each of us.

After attending this session, participants should be able to: 1) Describe how to assist the patient in understanding why more intensive work would be beneficial; 2) Provide an atmosphere where the necessary trust in the analyst and the process can develop.

Discussion Group 30: The Vulnerable Child: Thought Disorder in a Psychoanalytic Perspective: Organizational Mastery as a Super-Ordinate Developmental Line **CEC** **SOC**

Chairs: M. Hossein Etezady, M.D. (Malvern, PA)
Mary Davis, M.D. (Lancaster, PA)

Presenter: Theodore Fallon, M.D., M.P.H.
(Chester Springs, PA)

Discussant: Susan Sherkow, M.D. (New York, NY)

This discussion group will explore the phenomenon of thought disorder as manifested throughout development. The first part of the session will provide clinical examples and the second part will hypothesize some maturational processes that explain these clinical observations. The hypotheses will consider ego breakdown in the face of unprocessable affect, and a tolerance of the chaos experienced in the face of unprocessable affect, and finally piecing together a psychic organizational structure that is used as a guide to withstand strong affect and function in reality. Implications of these hypotheses will be considered, including a super-ordinate developmental line of organization.

After attending this session, participants should be able to: 1) Describe the role of unprocessable affect in thought disorder and ego breakdown at each developmental level; 2) Describe the challenges faced, the developmental processes that must take place, and therapeutic processes that can assist on the way to organizational mastery.

Discussion Group 31: Analytic Listening: Reflections on Hypothesis and Evidence **CEC**

Chair: Evelyne Albrecht Schwaber, M.D.
(Brookline, MA)

Co-chair: Ralph Beaumont, M.D. (Portland, OR)

Presenter: Thetis Cromie, D.Min., Ph.D.
(Chicago, IL)

The focus of this session will be on the centrality of the data-gathering process and consideration of the distinctions between hypotheses — which may derive from our theories — and the evidence for them, in listening to the patient. Looking closely at process

DAILY SCHEDULE

2:00 p.m.-4:00 p.m. (continued)

notes of single session(s), effort will be to sharpen our view on nuances of communications, verbal and nonverbal (eg., shifts in affect or state, tone of voice, pauses, posture, etc.). Attendance will be highlighted on cues that may be otherwise overlooked, as we reflect on assumptions and inferences — *whatever the espoused theoretical model* — to see how these may or may not hold up or stand in the way of opening yet untried paths. A suggested reading list will be sent.

After attending this session, participants should be able to: 1) Develop awareness of how one listens, noting distinctions and their ramifications between hypotheses generated, and evidence for them; 2) Detect verbal and nonverbal cues that may be otherwise overlooked to consider further implications in the nature of therapeutic action.

Discussion Group 32: Core Sexual and Femininity Conflicts in Female Analysts: Recovering an Old Focus **CEC**

Chair: Mia W. Biran, Ph.D. (Cincinnati, OH)

Presenter: Ruth Rosines, LCSW (Bellaire, TX)

Discussant: Nitza Yarom, Ph.D.* (Tel Aviv, Israel)

This discussion group focuses on identifying themes of sexual conflicts and confusions in adult female patients in analysis. Underneath symptoms of depression, anxiety, aggression, self-defeating behaviors, eating disorders, and others — there often lie unresolved femininity conflicts from early stages of development. Since the days of Freud, there has been a gradual decline in the place devoted in the literature to this important topic. This discussion group will start by reviewing some literature on the topic, and then case material will be presented by Ruth Resines for the group discussion. Dr. Nitza Yarom from Israel, author of the book “The Matrix of Hysteria,” will provide commentaries.

After attending this session, participants should be able to: 1) Describe the analytic literature regarding early origins of sexual conflicts in adult female patients with a focus on psychosexual anxieties; 2) Recognize themes relevant to sexual and femininity conflicts in the material of female analysts.

Discussion Group 33: Thinking About Primitive Mental States **CEC**

Chair &

Discussant: Lynne M. Zeavin, Psy.D. (New York, NY)

Presenter: Anne Schlachter, M.A.* (Chicago, IL)

Discussant: Shelley Rockwell, Ph.D.* (Washington, DC)

This discussion group will provide an opportunity to develop an understanding of those primitive mental states that emerge in all analyses, even with our less disturbed patients. Using Kleinian theory and technique, participants will closely follow clinical material in an effort to explore manifestations of early anxieties in the transference/countertransference. The focus will be patients who are difficult to reach; patients who are driven to undo the analytic work; patients whose narcissism makes contact with a live and separate analyst a terrible risk. A group can provide a setting that is essential for the recognition of what is taking place between patient and analyst.

After attending this session, participants should be able to: 1) Distinguish levels of psychic functioning on a continuum from the more organized to the more disturbed; 2) Identify and make use of their countertransference responses to inform their analytic interventions.

Discussion Group 34: Deepening Child Treatment **CEC**

Co-chairs: Edward Kohn, M.D. (Cincinnati, OH)

Sydney Anderson, Ph.D.

(Bloomington, IN)

Presenter: Erika Schmidt, LCSW (Chicago, IL)

There is increased pressure on child and adolescent clinicians to provide brief and symptom-focused treatments. Pressures from parents, schools, and managed care warrant against the provision of long-term, in-depth treatment. The combination of societal pressures, the child's or adolescent's resistances, and parental resistance can present formidable challenges. This discussion group will provide a forum for discussing overt and unconscious obstacles to depth treatment for children and adolescents as well as technical issues designed to facilitate movement towards more depth. The format will include a brief discussion of conceptual and technical issues followed by case presentations and group discussion.

After attending this session, participants should be able to: 1) Identify indicators in children and adolescents of the need for in-depth work and the ability to benefit from psychoanalysis; 2) Identify two strategies for talking with parents and with child and adolescent patients about deepening and intensifying therapeutic work.

DAILY SCHEDULE

2:00 p.m.-4:00 p.m. (continued)

Discussion Group 35: The IPA at the United Nations: A Psychoanalytic Contribution to the Problem of Torture **CEC** **SOC**

Chair: Vivian Blotnick Pender, M.D.
(New York, NY)

Presenters: Frank Summers, Ph.D. (Chicago, IL)
Lucia Minnerly-Vilella, Ph.D.*
(Chicago, IL)

The position of the American Psychoanalytic Association on torture is one of strong condemnation of all forms without exception. Participation by psychoanalysts in any form of torture is not only fundamentally unethical, it is also contrary to the mission of organized psychoanalysis. Many psychologists led by those in the Division of Psychoanalysis spoke out against the complicity of the American Psychological Association in psychologist involvement in torture conducted by the U.S. government. It is the thesis of this presentation that the empathic attunement required by the analytic process attracts those who oppose the objectification of the other. Examples will also be provided from experiences with the Chicago Police Department, the Lobo-Cabernite affair, and a psychoanalyst in Syria whose release was aided by UN mechanisms.

After attending this session, participants should be able to: 1) Describe the effects of torture on an individual and an organization; 2) List the UN mechanisms to help individuals who have been arbitrarily detained.

Discussion Group 36: The Contributions to Psychoanalysis of Paul Gray **CEC** **PSYT**

Chair: Todd Davison, M.D. (Glendale, WI)
Co-chair: R. Curtis Bristol, M.D. (Washington, DC)
Presenter: Monroe Pray, M.D. (Bethesda, MD)

This discussion group will read selections from Paul Gray's papers and discuss highlighted passages chosen by the chair and co-chair. In the discussion of these passages the group will be re-acquainted with Paul Gray's salient contributions to psychoanalysis.

After attending this session, participants should be able to: 1) Identify various self-analytic techniques based on Paul Gray's work; 2) Apply some of his theoretical and technical suggestions in the treatment of patients in psychoanalysis or psychotherapy.

Discussion Group 37: Psychoanalysis and the Humanities and Social Sciences: The Uses of Literature in the Psychoanalytic Process **CEC**

Chair: Melvin R. Lansky, M.D.
(Los Angeles, CA)

Co-chair: Robert A. Paul, Ph.D. (Atlanta, GA)
Presenter: Vera J. Camden, Ph.D.
(Cleveland Heights, OH)

Sigmund Freud famously identified the gripping power of Oedipus Tyrannos, drawing upon literature for the defining paradigm of the prototypical event in the psychic life of the human subject: the Oedipus complex. Psychoanalysis is shaped by an intellectual legacy imbued with a humanistic as well as a scientific view of human experience. Yet American psychoanalysis shows little of the regard, practically speaking, for the capacity of literature and art to instruct the psychoanalyst, however this capacity informed Freud's theoretical project and his clinical practice. Dr. Vera Camden's project takes as its departure point this notion of literature's ability to produce knowledge and its uses in the psychoanalytic process.

After attending this session, participants should be able to: 1) Identify the humanistic origins of the psychoanalytic paradigms; 2) Recognize literature as a continuing source of clinical insights to grasping human experience.

Discussion Group 38: A Classic Unvisited: The Clinical Value of the Ideas of Wilfred Bion **CEC**

Chair: Irene Cairo, M.D. (New York, NY)
Co-chair: Rogelio A. Sosnik, M.D. (New York, NY)
Presenter: Nancy Beckman, Ph.D.*
(San Francisco, CA)
Coordinator: Kaye Bock, M.S.W., LCSW
(Saint Louis, MO)

Wilfred Bion's model of mental functioning is anchored strongly on Freud's and Klein's theories: yet it provides a new and different tool for approaching the process. For Bion, the encounter of two minds produces an emotional storm where both participants approach the meeting with specific expectations. Session material will be presented to show how Bion's model can affect the apprehension of clinical material, with a particular emphasis on expanding the analyst's capacity for interpretation.

After attending this session, participants should be able to: 1) Identify several of Bion's basic theoretical ideas; 2) Recognize the specific way those ideas are applied to the clinical situation.

DAILY SCHEDULE

2:00 p.m.-4:00 p.m. (continued)

Discussion Group 39: Impasses in Psychoanalysis **CEC**

Chairs: Steven H. Goldberg, M.D. (San Francisco, CA)
Judy L. Kantrowitz, Ph.D. (Brookline, MA)

In this discussion group, participants will study the factors in both patient and analyst that contribute to the development of impasses and analytic “failures”. In particular, using detailed case presentations, participants will examine the subtle ways in which patient and analyst elicit in each other emotional experiences that cannot be adequately processed and understood. This discussion group will attempt to normalize the experience of struggling with such cases. Even though all analysts find themselves dealing with impasses and analytic failures, such experiences often become sources of shame rather than opportunities for learning and personal/professional growth.

After attending this session, participants should be able to: 1) Differentiate impasses and analytic “failure” from more expectable processes of resistance and working through; 2) Recognize contributions of both patient and analyst to the impasse, as well as greater appreciation for the necessity of self-analytic work and/or consultation in the resolution of the impasse.

Discussion Group 40: Research on the Relation of Psychoanalysis and Neuroscience: A Novel Neuropsychanalytic Hypotheses: The Importance of the Cerebellum as Master Control of the Brain **CEC**

Chair: Charles P. Fisher, M.D. (San Francisco, CA)
Co-chair: George G. Fishman, M.D. (Chestnut Hill, MA)
Presenter: Fred M. Levin, M.D. (Chicago, IL)

In this discussion group, a noted psychoanalyst and research writer will present and discuss novel findings from neuroscience research centered in Japan. Discussion will focus on critical thinking about the relevance and significance of this research. The presentation and subsequent discussion will thus help participants refine their thinking about research material, while simultaneously offering new information about specific findings. Since the majority of the participants will themselves be teachers, it will assist them in teaching students, residents, and candidates to acquire these skills.

After attending this session, participants should be able to: 1) Use refined skills to evaluate research data and apply it appropriately to clinical practice;

2) Teach students, residents and candidates better skills to evaluate research data.

4:30 p.m.-6:30 p.m.

Two-Day Clinical Workshop #1 (Part 2): Workshop Series in Analytic Process and Technique **CEC**

Two-Day Clinical Workshop #2 (Part 2): Workshop Series in Analytic Process and Technique **CEC**

Two-Day Clinical Workshop #3 (Part 2): Psychotherapy Technique and Process **CEC** **PSYT**

Two-Day Clinical Workshop #4 (Part 2): Workshop Series in Analytic Process and Technique **CEC**

Child and Adolescent Two-Day Clinical Workshop (Part 2) **CEC**

Discussion Group 41: IPSO: Owning the Body: Minding the Self: Confronting the Terror of Being Female, a Clinical Case **CEC**

Chair & Presenter: Deisy C. Boscan, Ph.D. (San Diego, CA)
Discussants: Holly Friedman Housman, LICSW (Cambridge, MA)
Norman V. Kohn, M.D. (Chicago, IL)

This discussion group, organized by the North America Vice-President for the International Psychoanalytical Studies Organization (IPSO), provides a forum for the presentation and discussion of clinical cases and theoretical ideas from around the world. Deisy Cristina Boscan, a psychoanalytic candidate in North America, but born and raised in South America, will give a clinical and theoretical presentation of her ongoing work with one of her patients. As the IPSO representative to COWAP, she will briefly present a historical perspective of the important role of women in and for psychoanalysis.

After attending this session, participants should be able to: 1) Recognize different clinical and theoretical perspectives, compare and contrast the various psychoanalytic cultures from around the world; 2) Identify new ideas to be utilized in their own clinical practices.

Discussion Group 42: Psychoanalytic Aspects of Assisted Reproductive Technology **CEC** **PSYT** **SOC**

Chair: Mali A. Mann, M.D. (Palo Alto, CA)
Presenter: Marie Dunn, LICSW, J.D. (Worcester, MA)
Discussant: Malkah Notman, M.D. (Brookline, MA)

THURSDAY

DAILY SCHEDULE

4:30 p.m.-6:30 p.m. (continued)

This discussion group will address the psychological effects of the individuals involved in various aspects of the alternative reproduction. It will provide guideline to the psychoanalytic treatment of the psychological difficulties encountered during these procedures. It will attempt to provide understanding of the short and long term effects on the participants as well as the offspring born via this technology.

After attending this session, participants should be able to: 1) Recognize psychological difficulties that participants endure during and after an alternative reproductive procedure; 2) Describe the long term psychological impact on the parents and children of the process of alternative reproductive technology.

Discussion Group 43: Writing About Your Analytic Work in a Case Report **CEC** **CND**

Chair: Stephen B. Bernstein, M.D.
(Chestnut Hill, MA)

Co-chairs: Melvin Bornstein, M.D. (Birmingham, MI)
Jonathan Palmer, M.D. (Newton, MA)
Arthur L. Rosenbaum, M.D.
(Cleveland Heights, OH),
Peggy Ellen Warren, M.D. (Waban, MA)

Presenter: Mary J. Landy, M.D. (Indianapolis, IN)

Analysts are often called upon to describe analytic work in written form. Clinical psychoanalysis is a spoken process; however it is through a written process that much of the psychoanalysts' reflection, learning, teaching, transmission of clinical data, and research occurs. This discussion group will focus on the translation of clinical work from spoken to written modes. It is led by analysts who have had significant experience in teaching about clinical writing.

After attending this session, participants should be able to: 1) Organize and write about the analyst's work in a case report; 2) Communicate the specific experience of both the patient and the analyst in the clinical account.

Discussion Group 44: Advocacy for Psychoanalysis **CEC**

Co-chairs: Norman A. Clemens, M.D.
(Cleveland Heights, OH)
Paul W. Mosher, M.D. (Albany, NY)

Since 1996 this discussion group has studied the Supreme Court decision in Jaffee v. Redmond and followed its many consequences with implications for clinical practice. These include effects on Federal and state court proceedings as well as the HIPAA Privacy Rule. With the push towards widespread use and transmission of electronic medical records,

new challenges to privacy and confidentiality have arisen. Originally sponsored by the Committee on Confidentiality, this discussion group engages practicing psychoanalysts in learning about these important issues and how to deal with them.

After attending this session, participants should be able to: 1) Describe recent developments in the legal consequences of the 1996 Jaffee-Redmond decision, with particular attention to the dimensions of privacy, confidentiality, and privilege as they apply to the personal information disclosed in psychotherapy and psychoanalysis; 2) Apply this knowledge to protect their patients and their therapy.

Discussion Group 45: Towards an Understanding of Loneliness and Aloneness **CEC**

Co-chairs: Arlene K. Richards, Ed.D. (New York, NY)
Lucille Spira, C.S.W, Ph.D.*
(New York, NY)

Presenter: Jeffrey Stern, Ph.D.* (Chicago, IL)

How does a psychoanalyst understand loneliness? The lonely patient is hard to help because providing a relationship is exactly what the lonely patients are afraid of. The patient who seems to have no loving connections is even more challenging than the patient who complains of being lonely. This discussion group will focus on Dr. Jeffrey Stern's understanding of the vicissitudes of loneliness developed from his clinical work and his literary studies. Dr. Stern has published on Shakespeare and clinical work. He will draw from Self Psychology to enrich our understanding of the lonely patient.

After attending this session, participants should be able to: 1) Define methods of recognizing and staving off loneliness in specific situations; 2) Recognize ways patients defend against loneliness.

Discussion Group 46: Supervising Psychoanalytic Psychotherapy **CEC** **PSYT**

Co-chairs &

Discussants: Jane S. Hall, LCSW, FIPA (New York, NY)
Fred L. Griffin, M.D. (Dallas, TX)

Presenter: Jerome Blackman, M.D.
(Virginia Beach, VA)
Aileen D. Kim, M.D.* (Washington, DC)

Psychotherapy supervisors must help supervisees to understand and make use of not only verbal communications from their patients, but also behaviors within psychotherapy sessions that replace words with actions. In this discussion group Dr. Blackman and his supervisee, Dr. Kim, will discuss how 'acting in' became the focus of supervision when a patient

DAILY SCHEDULE

4:30 p.m.-6:30 p.m. (continued)

came to the office with her infant in tow. They will demonstrate how the supervisory process can be utilized to provide supervisees the skills to transform this and other behaviors that threaten to break the analytic frame (for example, bringing coffee or food to sessions, coming late) into a useful medium for therapeutic work.

After attending this session, participants should be able to: 1) Teach supervisees techniques for making use of acting in behaviors as sources of understanding the patient's internal world and interpersonal style; 2) Use such challenges to the analytic frame as opportunities to move the supervisee's understanding of and approaches to psychotherapy from the adoption of a set of rules to be followed toward a more comprehensive understanding of the essence of an analytic approach.

Discussion Group 47: Intersubjectivity and Transformative Moments in Psychoanalysis and Creative Works — The Centrality of Psychoanalysis in the Life, Times and Creative Works of Arthur Miller **CEC** **PSYT**

Chair &

Presenter: R. Curtis Bristol, M.D. (Washington, DC)

The Arthur Miller autobiography, "Time Bends," is a tour de force for examining the self account of creativity. Dr. Bristol will supplement this work with other references to demonstrate how Miller's writing is often acknowledged for the centrality of internal conflict and defenses based on Oedipal themes. With examples from "A View from the Bridge," "Death of a Salesman" and "After the Fall," Dr. Bristol will expand the view of self and other in Miller's characters and action to demonstrate a self psychological perspective.

After attending this session, participants should be able to: 1) Examine, in the work of an exceptional playwright, the psychological structure of distinct character types that determine their role and choices; 2) Demonstrate the differences and similarities of analyzing the character of another's' imagination and the analysis of actual patients.

Discussion Group 48: Psychoanalysis and Couple Therapy **CEC** **PSYT**

Co-chairs &

Discussants: Graciela Abelin-Sas, M.D.
(New York, NY)

Peter Mezan, Ph.D.* (New York, NY)

This discussion group centers on three overlapping areas of great current interest: 1) the application of psychoanalytic principles to the treatment of couples;

2) the distinction between the unconscious organization of the individual and the unconscious organization of the couple; and 3) the synergy in the increasingly common dual treatment situation between individual psychoanalysis and psychoanalytic couple therapy.

After attending this session, participants should be able to: 1) Demonstrate the power of psychoanalytic principles in understanding and interpreting the unconscious structure and dynamics of a couple; 2) Evaluate the mutually synergizing effects between concurrent individual and couple treatments.

4:30 p.m.-7:00 p.m.

Special Program #1 for Psychiatric Residents, Psychology and Social Work Students: Caught Between Two Worlds: Hearing Psychodynamic Themes in a Cognitive Behavioral Treatment **CEC** **PSYT**

Chair: Andres Barkil-Oteo, M.D., MSc*
(New Haven, CT)

Faculty: Richard Summers, M.D.
(Philadelphia, PA)

Presenter: Laurie Gray, M.D.* (Philadelphia, PA)

A 17-year-old girl brings artwork and journal entries to her sessions, challenging the structure of a cognitive behavioral therapy. When the therapist notices patterns in missed appointments, she becomes alert to the role of transference in the treatment. In this program, we will explore how a psychiatry resident practicing multiple types of psychotherapy as part of her training learns to discern psychodynamic themes in varied treatment contexts; how different theoretical views cast the relationship between patient and therapist; and how a therapist trained in multiple modalities might try to establish what works best for her patient.

After attending this session, participants should be able to: 1) Develop contrasting psychodynamic and cognitive-behavioral conceptualizations of a patient, appreciating their differences and similarities; 2) Discuss the conceptual tools that allow a clinician to know when it is time to consider changing the type of psychotherapy offered to a patient.

7:30 p.m.-10:30 p.m.

Film Workshop: "Persona" **CEC** **PSYT**

Chair: Bruce H. Sklarew, M.D.
(Chevy Chase, MD)

Presenter: Kenneth Newman, M.D. (Chicago, IL)

Bergman's masterful 1966 film visualizes the intimacy between Elizabeth (Liv Ullmann), an actress who becomes mute while playing Electra, and her nurse,

DAILY SCHEDULE

7:30 p.m.-10:30 p.m. (continued)

Alma (Bibi Andersson). Although the narrative structure is seemingly simple, "Persona" is dense and enigmatic. The film, like the dream, emphasizes images, rhythms and choreographed movements rather than dialogues. Susan Sontag called it "a riddle without a sphinx." It is a meta-film, a film about film making. Compelling, complex images emphasize their sado-masochistic interactions, role reversals, merger and homoeroticism. Alma becomes the recipient of Elizabeth's projected rages and eventually feels betrayed and humiliated by Elizabeth.

After attending this session, participants should be able to: 1) Recognize defenses against merger and homoeroticism; 2) Describe the variety of unconscious conflicts in this film.

FRIDAY, JUNE 15, 2012

8:00 a.m.-9:30 a.m.

Administrative Meeting: Business Meeting of Members and Presentation of Awards **PSYT**

Chair: Warren R. Procci, M.D., President (Pasadena, CA)

The Meeting of Members is an opportunity for all APsaA members to learn about current activities in the Association. The meeting features the presentation of numerous awards and recognitions given by the Association both to members and nonmembers.

The Association's strategic plan will be discussed at this meeting and time will be provided for questions. All registrants are encouraged to attend.

9:45 a.m.-11:15 a.m.



Plenary Address: Community Based Psychoanalysis **CEC** **PSYT** **SOC**

Chair: Robert Lindsay Pyles, M.D., President-Elect (Wellesley Hills, MA)
Introducer: Glen O. Gabbard, M.D. (Bellaire, TX)
Speaker: Stuart W. Twemlow, M.D. (Houston, TX)

Community Based Psychoanalysis has a long and distinguished history and a sparkling future in our discipline. This plenary will discuss the history and attempt an outline of how clinical psychoanalysis and CBP are similar and different. A case will be made for the coming of age of this subspecialty of our field, as a full partner in training, and as a practical and public way to rescue us from irrelevance, and help our fellow citizens who are not patients.

After attending this session participants should be able to: 1) Describe the differences and similarities between clinical psychoanalysis and CBP; 2) Outline a training schedule to prepare candidates for community based work as part of their psychoanalytic practice.

11:30 a.m.-1:30 p.m.

Committee Sponsored Workshop 8: COPE Workshop on Classroom Teaching:

How We Learn **CEC** **PSYT**

Chair: Gerald A. Melchiodi, M.D. (Dallas, TX)
Presenters: Elizabeth Rottenberg, Ph.D.* (Chicago, IL)
 Lauren Jacker, M.D. (Chicago, IL)
 Norman V. Kohn, M.D. (Chicago, IL)
 Anne Redlich, LCSW (Chicago, IL)

The workshop provides a safe place where participants can consolidate our identities as analyst teachers, share information, learn new techniques, present teaching problems, and encourage all to be critical lifetime learners. The focus shifts from teaching methods to how students learn best. In this presentation candidate colleagues share their perspectives on how they most effectively learn.

After attending this session participants should be able to: 1) List teaching approaches that enable students to learn; 2) List methods that interfere with the learning process.

Candidate Writing Workshop: Learn to Write for Journals, Presentations and Scientific Paper Prizes **CEC** **CND**

Chair: Navah C. Kaplan, Ph.D. (New York, NY)
Panelists: Steven T. Levy, M.D. (Atlanta, GA)
 Richard M. Gottlieb, M.D. (New York, NY)

How does one go from bright idea to publishable paper? This second writing workshop will address how to take an idea and work it through into a scientific paper meeting criteria for publication. Candidates will be invited in advance to submit an idea for a paper they have considered writing. Two prominent editors of JAPA will use some of these ideas during the workshop to illustrate their points on the process a writer must undertake to bring the seed of an idea to fruition, resulting in a paper that meets the standards for professional dissemination. Participants will have a chance for discussion in an informal atmosphere.

After attending this session, participants should be able to: 1) Develop an idea into a scientific paper meeting criteria for publication; 2) Evaluate papers as readers for The Candidate Scientific Paper Prize and for journals.

DAILY SCHEDULE

12:00 noon-1:30 p.m.

Presidential Symposium:

Patrick J. Kennedy and the “One Mind for Research” Project **CEC** **PSYT** **SOC**

Chair: Warren R. Procci, M.D., President
(Pasadena, CA)

Presenter: Patrick J. Kennedy,* former
congressman from Rhode Island

Patrick Kennedy will discuss the One Mind for Research project which is based on the challenge his uncle John F. Kennedy made to put a man on the moon within ten years. The One Mind project challenges the U.S. to be the first nation in the next ten years to unlock the mysteries of the brain. One Mind's vision is “to realize preventions and cures of brain disorders by the end of this decade.” Early efforts will be focused on treatment of Traumatic Brain Injury and Post-Traumatic Stress Disorder among veterans. It is recommended to view the video at <http://1mind4research.org/about-us>. Mr. Kennedy was partly responsible for getting the Mental Health Parity Act passed by Congress.

After attending this session, participants should be able to: 1) Describe current barriers to implementing research findings in their clinical practices; 2) Describe how the One Mind for Research project will bring together various research findings that they will be able to apply to their clinical practices.

Community Symposium: The Analyst at the Morgue — Helping Families Deal with Traumatic Bereavement **CEC** **PSYT** **SOC**

Chair: Marie Rudden, M.D.
(West Stockbridge, MA)

Presenters: Bruce H. Sklarew, M.D.
(Chevy Chase, MD)
Jonathan Arden, M.D.*
Former Chief Medical Examiner
(Washington, DC)

The RECOVER program of the Wendt Center for Loss and Healing provides free crisis support and early intervention bereavement counseling for families who arrive at the Office of the Chief Medical Examiner to identify family members who have died suddenly. The program has worked with over ten thousand families in the past ten years. The program was initiated by Bruce Sklarew with Chief Medical Examiner Jonathan Arden. Each presenter will discuss the uniqueness of the program and the stresses of dealing with the struggles and rage of acutely bereft family members.

After attending this session, participants should be able to: 1) Recognize the range of emotional responses of the acutely bereaved; 2) Describe

a psychoanalytic model that helps community members to mourn after violent or sudden deaths.

1:30 p.m.-3:00 p.m.

Scientific Paper 1: Sado-Masochistic Relations Between Ego and Superego in Anorexic Patients **CEC**

Chair: Henry J. Friedman, M.D.
(Cambridge, MA)

Author: Rita Teusch, Ph.D. (Cambridge, MA)

Discussant: Kathryn J. Zerbe, M.D. (Portland, OR)

A false or deficient self, characterized by low self-esteem, failures in self-regulation, perfectionism and ego depletion, has been described as being characteristic of anorexic patients. The author investigates the false self with Freud's tripartite model of the mind and suggests that it results from a pathological, mostly unconscious sado-masochistic relationship that has developed between the ego and superego subsequent to a traumatic disturbance in early narcissism. Clinical manifestations of the sado-masochistic relations between ego and superego are discussed and their role in the development and maintenance of the eating disorder is illustrated in a case presentation.

After attending this session, participants should be able to: 1) Describe how the sado-masochistic relationship between ego and superego is evident in the anorexic's personality traits of perfectionism and self-sufficiency; 2) Outline how pathological dynamics between ego and superego are associated with the development and maintenance of the eating disorder and how these can be clinically modified.

2:00 p.m.-3:30 p.m.

Psychoanalysis and Health Care Reform **CEC** **PSYT** **SOC**

Note: This program is intended to satisfy the requirements of those states that require CME credits in the area of risk management or medical ethics for medical license renewal, but the final judgment for such qualification is made by each state's medical board.

Chair & Presenter: James C. Pyles, Esq.* (Washington, DC)

This session will discuss the cases argued before the Supreme Court on March 27 challenging the Affordable Care Act on various grounds. The implications for APsaA and its members will be discussed. This session will also address developments in health information privacy including the Consumer

DAILY SCHEDULE

2:00 p.m.-3:30 p.m. (continued)

Privacy Bill of Rights issued by the White House in February and the ANSI report on the "Financial Impact of Breached Protected Health Information" issued on March 5. Finally, this session will discuss the Medicare Patient Empowerment Act (H.R. 1700, S. 1042) which would allow Medicare beneficiaries to enter into private contracts with physicians to pay privately for services without the physicians opting out of Medicare.

After attending this session, participants should be able to: 1) Describe the latest developments in health care reform, how they impact clinical practices, and what participants will need to do in response; 2) Identify the latest developments in health information privacy, including the right to contract for private payment under Medicare, and how this can be put into clinical practice.

2:00 p.m.-4:30 p.m.

Special Program #2 for Psychiatric Residents, Psychology and Social Work Students: Immigration Through the Psychoanalytic

Lens **CEC** **PSYT** **SOC**

Chair: Elizabeth Castrellon, M.S.W.*
(Houston, TX)

Faculty: Salman Akhtar, M.D. (Ardmore, PA)

Presenter: Sharmin Ghaznavi, M.D., Ph.D.*
(Boston, MA)

The process of migrating from one country to another has profound effects on an individual's identity. A case of a recent immigrant to the United States that highlights both the intrapsychic and social struggles associated with immigration will be presented.

After attending this session, participants should be able to: 1) Formulate issues that arise in psychotherapy with immigrant patients; 2) Distinguish neurotic conflict from struggles with differences in culture.

2:00 p.m.-5:00 p.m.

Panel I: Sexual Aberrations: Do We Still Need the Concept? If So, When and Why? If Not, Why Not? **CEC** **PSYT**

Chair: Donald B. Moss, M.D. (New York, NY)

Panelists: Sidney H. Phillips, M.D. (New Haven, CT)

Richard B. Simpson, M.D.*
(Toronto, Canada)

Avgi Saketopoulou, Psy.D.*
(New York, NY)

The chair and each panelist will present brief position statements regarding their understanding of the meanings and potential relevance of the concept "sexual aberration." The panel will then take up

specific problems represented in a series of clinical vignettes. In each vignette, the problem will be to determine at which point, if any, one "draws a line," beyond which the situation enters the zone of the "aberrant." After the panel has worked on these vignettes, the floor will be open for discussion.

After attending this session, participants should be able to: 1) Delineate and give reason for their clinical use or disuse of the notion of "sexual aberration"; 2) Work more effectively with non-normative sexualities.

University Forum: Immigration: Collision, Assimilation, or Integration? **CEC** **PSYT** **SOC**

Chair: Robert A. Paul, Ph.D. (Atlanta, GA)

Presenters: Homi K. Bhabha, D.Phil*
(Cambridge, MA)

Richard A. Shweder, Ph.D.* (Chicago, IL)

Discussant: Adrienne Harris, Ph.D.* (New York, NY)

Reporter: Carmela Perez, Ph.D. (New York, NY)

Homi K. Bhabha is the Anne F. Rothenberg Professor of English and American Literature and Language, and Director of the Humanities Center at Harvard University. He is one of the world's most influential writers and speakers on immigration, especially via literature. Richard A. Shweder is the William Claude Reavis Distinguished Service Professor of Human Development at the University of Chicago. He has described Norway wanting to place young children in foster care because their South Asian Indian parents slept in the same bed with them and fed them hand to mouth. Together they will consider how the dominant group manages cultural practices of outsider immigrants and how the outsiders resist and adapt to pressures for assimilation.

After attending this session, participants should be able to: 1) Describe the psychoanalytic concepts of narcissism, projection and identification in the study of cultural conflicts; 2) Identify how individuals in conflict with the dominant culture disguise and deflect otherness, and practice cultural hybridity.

3:00 p.m.-4:00 p.m.

Committee Sponsored Workshop 9: Ethics Workshop **CEC** **PSYT**

Chair: Peter Kotcher, M.D. (Cincinnati, OH)

This workshop is open to all interested members, although members of the local ethics committees are especially encouraged to attend since experience and familiarity with the complex process of responding to complaints can minimize the myriad of problems that inevitably arise when a fellow member's conduct is questioned.

DAILY SCHEDULE

3:00 p.m.-4:00 p.m. (continued)

After attending this session participants should be able to: 1) Identify common ethical concerns related to psychoanalytic education and practice; 2) Develop and apply local procedures for responding to ethics complaints.

3:30 p.m.-5:00 p.m.

Scientific Paper 2: Forgiveness, Entitlement and Recovery from Trauma in Clinical Situations **CEC** **PSYT**

Chair: Henry J. Friedman, M.D.
(Cambridge, MA)

Author: Shahrzad F. Siassi, Ph.D.
(Sherman Oaks, CA)

Discussant: Stuart W. Twemlow, M.D. (Houston, TX)

This paper draws attention to the important issue of trauma inflicted by intimates, especially parents, which differs from trauma in the form of transgressions and betrayals in the context of less “rooted” relationships. By considering the individual’s basic sense of entitlement in kinship and how the experience of oneself is rooted in those very same intimate relationships, the author explores a heretofore ignored second phase in the clinical path toward forgiveness, that of re-establishing a bond with the offending intimate.

After attending this session, participants should be able to: 1) Describe the psychoanalytic underpinning of forgiveness and clinically applicable ways of formulating the conflictual and developmental issues which relate to forgiveness; 2) Recognize the difference between acceptance and forgiveness, especially, through the unique dynamics of the second phase of forgiveness.

5:15 p.m.-6:45 p.m.



Ernst and Gertrude Ticho Memorial Lecture: Mimesis: Re-presentations of Inner life in Western Literature and Their Contributions to Psychoanalytic

Views of Humankind **CEC** **PSYT**

Chair: Warren R. Procci, M.D., President
(Pasadena, CA)

Introducer: Arnold D. Richards, M.D. (New York, NY)

Speaker: Nathan Moses Szajnberg, M.D.
(New York, NY)

Psychoanalytic concepts — inner life, development, personhood, intimacies and security — developed as early as the Bible and Homer. Dr. Szajnberg presents Auerbach’s “Mimesis” a history of Western literature from ancient to modern times. Dr. Szajnberg suggests studying the evolution of inner realities over two

millennia. He elaborates on how pre-psychoanalytic concepts contributed to psychoanalytic concepts. He sails close to Auerbach, navigating islands of canonical texts to chart our assumed models of the mind. Some concepts survived; others fell overboard. Ultimately, we assume an inner life that is influenced by significant others (particularly in early childhood), but whose journey may be altered by trauma. These are quiet navigational guides for our daily work in the psychoanalytic voyage towards a new haven.

After attending this session, participants should be able to: 1) Describe several examples of Western literature that contributed to our current psychoanalytic concepts such as “person” or “development”; 2) Compare early Western literary concepts of person with concepts from Shakespeare (whom Bloom described as “inventing the human”) or more contemporary literature.

6:45 p.m.-8:30 p.m.

Social Event: Ernst and Gertrude Ticho Memorial Lecture Reception **PSYT**

All are invited to attend this lovely cocktail reception sponsored by the Ernst and Gertrude Ticho Charitable Foundation immediately following the lecture.

SATURDAY, JUNE 16, 2012

7:00 a.m.-9:00 a.m.

Discussion with the Committee on Scientific Activities: The Use of Computers in Psychoanalysis: Science in the Office: Doing Credible Research with a Personal Computer and Without a Grant **CEC** **PSYT**

Co-chairs: Lee D. Brauer, M.D. (West Hartford, CT)
Sheila Hafter Gray, M.D.
(Washington, DC)

Dr. Sheila Hafter Gray will present a straightforward clinical study of psychoanalyses in a single practice, and show how the data were analyzed. Dr. Lee Brauer will demonstrate how to use appropriate non-parametric statistical tests available to most personal computer users. They both will discuss how analysts can contribute to the field by providing anonymous clinical data from their practices to enlarge the evidence base for psychoanalysis and dynamic psychotherapies.

After attending this session, participants should be able to: 1) Create data shells and code clinical information for simple studies in ways that protect privacy and confidentiality of patients; 2) Do simple statistical analyses using Excel(c) and similar data base programs and on-line resources.

DAILY SCHEDULE

7:30 a.m.-8:45 a.m.

Coffee with a Distinguished Analyst:

Mark D. Smaller, Ph.D. **CEC** **CND** **PSYT**

Chair: Hilli Dagony-Clark, Psy.D. (New York, NY)

Discussant: Mark D. Smaller, Ph.D. (Chicago, IL)

This round-table discussion will feature upcoming APsaA President-Elect Mark D. Smaller, Ph.D. Dr. Smaller is founding director of The Analytic Service to Adolescents Program, recently the recipient of the Award for Excellence by the Association for Child Psychoanalysis. He is also former director of the Neuropsychoanalysis Foundation. Dr. Smaller has been a strong advocate of community and media outreach efforts aimed at expanding psychoanalysis to the world at large. He will address outreach efforts furthering the cause of psychoanalysis, practice expansion, education, and research. Effective ways of increasing one's public visibility as a psychoanalyst will be outlined and discussed.

After attending this session participants should be able to: 1) Identify media and community outlets where outreach is beneficial; 2) Advertise their skills as psychoanalysts and promote their private psychoanalytic practices.

9:00 a.m.-11:30 a.m.

Special Program #3 for Psychiatric Residents, Psychology and Social Work Students: Together in the Waves of Shifting Reality: Towards Stability and Change in the Context of Psychosis **CEC** **PSYT**

Chair: Ben Weiss, M.S.W.* (Cambridge, MA)

Faculty: Richard Fritsch, Ph.D.
(Chevy Chase, MD)

Presenter: Johanna Malone, Ph.D.*
(Cambridge, MA)

For both patient and therapist, knowing and using one's own mind is central to the analytic process. Trusting the accuracy of one's perceptions has direct implications for functioning in the world. However, when a patient's experience of reality is characterized by episodes of psychotic processes, the therapeutic dyad faces particular challenges in the movement towards adaptive change. This presentation will use process material to illustrate how the therapist maintained engagement with the patient across shifting states of reality. In the context of inter-relatedness, the case presentation will explore: 1) the development of increased internal stability of self; 2) challenges to perceptions of power and helplessness in the world; and 3) the experience of grief and joy that comes from knowing the self.

After attending this session, participants should be able to: 1) Identify ways to develop and utilize the therapeutic alliance when working with people with psychotic process; 2) Recognize specific challenges that fluctuating psychotic process brings to self-understanding and engagement in the world.

9:00 a.m.-12:00 noon

Child and Adolescent Panel: Mothers, Children, and Immigration: Psychoanalytic Perspectives on Culturally Imbued Clinical Situations **CEC** **PSYT** **SOC**

Chair: Monisha C. Akhtar, Ph.D. (Ardmore, PA)

Presenters: Mali A. Mann, M.D. (Palo Alto, CA)
Benjamin Garber, M.D. (Chicago, IL)
Bhaskar Sripada, M.D. (Chicago, IL)

Discussant: Kerry Kelly Novick (Ann Arbor, MI)

Reporter: Kehinde A. Ayeni, M.D.
(Farmington Hills, MI)

Presentations in this panel will focus upon the triad of mother, child and immigration, offering theoretical speculations on the structure of immigrant parenting and the dynamic of parent-child interaction. The challenges faced by an immigrant family make further demands on clinical techniques that may need modifications and adjustment. The analyst's possible lack of familiarity with the immigrants' socio-economic, traumatic life events and adverse political backgrounds may result in mis-attunement in the clinical experience. These presentations will provide several clinical illustrations to examine the therapeutic work with this population.

After attending this discussion, participants will be able to: 1) Identify at least three challenges faced by the immigrant mother/child dyad; 2) Identify technical interventions that can be used when working with this population.

Panel II: Gay Male Desires and Sexualities: Clinical Encounters in the 21st Century **CEC** **PSYT** **SOC**

Chair: Gary Grossman, Ph.D.
(San Francisco, CA)

Presenters: Paul E. Lynch, M.D. (Boston, MA)
Gilbert Cole, Ph.D.* (New York, NY)

Discussant: Lynne M. Zeavin, Psy.D. (New York, NY)

Reporter: Susan McNamara, M.D.*
(Middletown, CT)

As psychoanalysis has evolved and moved beyond marginalizing and pathologizing homosexuality, psychoanalysts are better able to turn our attention to understanding the varied experiences and complaints of our gay male patients. This is especially relevant with regards to his discovery, experiences

DAILY SCHEDULE

9:00 a.m.-12:00 noon (continued)

and expressions of desire and sexuality. Although attitudes have changed significantly in the past two decades, with greater acceptance of homosexuality and same-sex relationships, the boy who grows up to be gay continues to discover his sexuality in the context of a society that fails to recognize or celebrate his desire. This panel will consider the psychological impact of contemporary culture on gay male identity, desire and sexuality in the context of emotionally challenging analytic encounters.

After attending this session, participants should be able to: 1) Describe common experiences and expressions of desire and sexuality presented by gay men in psychoanalysis and psychotherapy; 2) Identify possible conscious and unconscious meanings, functions and determinants of gay male sexuality in a context that does not pathologize the patient's sexual identity or behavior.

12:00 noon-1:30 p.m.

Psychoanalysis and Neuroscience Symposium: How a Comprehensive Psychoanalytic Theory Can Integrate Clinical Observation and Neuroscience Experiments in the Investigation of Unconscious Processes and Primary Process Thinking **CEC** **PSYT**

Chair: Charles P. Fisher, M.D.
(San Francisco, CA)

Presenter: Howard Shevrin, Ph.D. (Ann Arbor, MI)

A major concern for those who think about the relationship of psychoanalysis and neuroscience is the challenge of integrating clinical and experimental findings. This challenge has been articulated by Eric Kandel, Adolph Grunbaum, and others. In this program, a psychoanalyst and researcher will demonstrate how a comprehensive psychoanalytic theory can integrate clinical observation and neuroscience experiments. Two basic assumptions of psychoanalysis — the assumption of a psychological unconscious and the assumption that unconscious processes follow different rules of thought from conscious processes — are supported by experimental evidence which will be presented. Implications for psychoanalytic theory will be pointed out.

After attending this session, participants should be able to: 1) Describe experimental evidence supporting the psychoanalytic assumptions of a psychological unconscious and of a distinctive form of primary process thinking; 2) Describe how a comprehensive psychoanalytic theory can integrate clinical observation and neuroscience experiments.

12:00 noon-2:00 p.m.

Committee Sponsored Workshop 10: Workshop on Psychotherapy Training **CEC** **PSYT**

Co-chairs: Marcia Kaplan, M.D. (Cincinnati, OH)
Sally Rosenberg, D.O.
(West Bloomfield, MI)

This workshop is designed to provide faculty from APsaA and non-APsaA psychoanalytic institutes and societies a forum for discussion about creating, maintaining and recruiting students for psychoanalytic psychotherapy programs. The workshop allows an opportunity to meet and exchange ideas with those around the country who are involved in psychotherapy training programs within institutes and societies. At this meeting the focus will be on how to engage graduates of psychotherapy programs and consider ways to include alumni of these programs in institute and society committees, programs and teaching efforts.

After attending this session, participants should be able to: 1) Identify programs around the country that can serve as models and provide resources; 2) Identify ways of including graduates of psychotherapy programs in their psychoanalytic communities.

1:30 p.m.-3:00 p.m.

Scientific Paper 3: Suicide, Secrets and Lies: An Exploration of the Dynamics of Suicide **CEC** **PSYT**

Chair: Donald B. Moss, M.D. (New York, NY)
Author: Elizabeth Weinberg, M.D.
(Stockbridge, MA)

Discussant: Michael D. Groat, Ph.D.* (Houston, TX)

This paper presentation addresses the dilemma that, although therapists often rely on empathic understanding to assess the presence and level of suicide risk in their patients, some patients may attempt suicide when the therapist experiences no affective signal of danger. This may coexist with longstanding patterns of secrecy, disavowal or lies, seriously compromising the therapy. This paper explores a formulation based on Freud's original concept of splitting in the ego, hypothesizing that long established splits in the patient's identity lead to splitting in the work ego. Finally, technical recommendations will be reviewed and discussed.

After attending this session, participants should be able to: 1) Describe the psychodynamic model that is proposed relating suicide to splits in the patient's ego; 2) Discuss technical recommendations relevant to managing suicide risk in the presence of prominent ego splits and secretive behavior in the patient.

DAILY SCHEDULE

2:00 p.m.-5:00 p.m.

Panel III: Analyzing the Children of Immigrants **CEC** **SOC***Chair:* Stanley J. Coen, M.D. (New York, NY)*Presenters:* Aisha Abbasi, M.D. (West Bloomfield, MI)
Shahrzad F. Siassi, Ph.D. (Sherman Oaks, CA)*Peggy B. Hutson, M.D. (Miami, FL)**Discussant:* Salman Akhtar, M.D. (Ardmore, PA)*Reporter:* Harry Penn, M.D. (Cambridge, MA)

Three clinical presentations will highlight how similarities and differences between patient and analyst aid, hinder, or defend against analytic work with children of immigrants. Immigrant as well as native-born analysts will consider problems of immigration as they affect children of immigrants in analysis. Analysts need to help patients accept and integrate their origins and their new homeland, to the extent possible, rather than radically split them.

After attending this session, participants should be able to: 1) Analyze emotional problems that are common in their patients who are children of immigrants; 2) Describe how similarities and differences between patient and analyst affect the analytic work.

Meet-the-Author: Dr. Jonathan Lear **CEC** **PSYT***Chair:* Marie Rudden, M.D. (West Stockbridge, MA)*Author:* Jonathan Lear, Ph.D. (Chicago, IL)*Book:* *A Case for Irony*, Harvard University Press 2011*Discussant:* Al Margulies, M.D. (Auburndale, MA)

The author, a distinguished philosopher and psychoanalytic scholar, will demonstrate how the human yearning for transcendence arises within the psychoanalytic situation. He will specifically consider how humans unconsciously pursue life-plans of great importance to them, but which are often at odds with their conscious understanding of what matters. Finally, he will discuss what irony is — a concept that has become much misunderstood in the modern world, in part because it has been cut off from its ancient roots — and how it can be of help in working with the above issues in an analytic context.

After attending this session, participants will be able to: 1) Describe philosophical concepts of transcendence and irony in a way that clarifies their understanding of the psychoanalytic situation and of the therapeutic action of psychoanalysis; 2) Use irony, in the true sense of the word, as a useful part of their clinical psychoanalytic technique.

Film Workshop: Inter-Generational Transmission of Trauma in “Incendies” **CEC** **SOC***Chair &**Presenter:* Bruce H. Sklarew, M.D. (Chevy Chase, MD)

“Incendies,” directed by Denis Villeneuve and the Canadian finalist for best foreign film, was based on the play “Scorched,” by Wajdi Mauwad. This delicate and fierce film intrigues the audience with a profound puzzle of mythic dimensions. Set in contemporary Montreal and the Lebanese civil war, it challenges us intellectually and leaves a haunting impact. The traumatic past of the Lebanese mother is revealed to her young adult twins as she sends them on a shattering mission to her homeland. The scorched-earth violence is a metaphor for traumatic experience, scorched psyche, rage, and wishes for retaliation in the mother. After watching the film, there will be a round table discussion.

After attending this session participants should be able to: 1) Describe the effects of a parent’s traumatic life on her children; 2) Recognize how film is a vehicle for portraying struggles and dilemmas.

3:30 p.m.-5:00 p.m.

Scientific Paper 4: The Vertical Split: Sympathy for the Devil — Empathy for the Other **CEC***Chair:* Donald B. Moss, M.D. (New York, NY)*Author:* Lou Agosta, Ph.D. (Chicago, IL)*Discussant:* Nathan Moses Szajnberg, M.D. (New York, NY)

This essay in applied psychoanalysis takes Goethe’s “Faust” and Mann’s “Dr. Faustus” as witnesses to the limits of empathy (and sympathy) following the ever-present background in Mann’s narrative of the Holocaust and Germany’s engagement with the devil of Nazism in the direction of the lessons learned about empathy in the face of historical evil. The examples provide evidence that empathy tells us what the other is experiencing, whereas sympathy provides a basis “of morality, telling us what we should do about what the other is feeling. A clinically relevant vignette on the vertical split from the author’s practice is also integrated.

After attending this session, participants should be able to: 1) Identify and interpret the vertical split in celebrated characters in literature in the context of empathy and sympathy; 2) Illustrate and compare the difference between empathy and sympathy in applying psychoanalysis to the vertical split.

DAILY SCHEDULE

7:30 p.m.

An Evening of Classical Music in Millennium Park

Join the Local Arrangements Committee and fellow colleagues for a world-class concert in Millennium Park. Contact Caryle Perlman, Chair, Local Arrangements Committee at 312-235-0200 or caryle.perlman@comcast.net for availability if tickets were not purchased during pre-registration.

SUNDAY, JUNE 17, 2012

9:00 a.m.-11:30 a.m.

Special Program #4 for Psychiatric Residents, Psychology and Social Work Students: Picking Up the Pieces: Treating a Patient in Existential Crisis After a Traumatic Event **CEC**

Chair: Elisa Cheng, M.D.* (Belmont, MA)
Faculty: James Fisch, M.D. (Chicago, IL)
Presenter: Umi Chong, Psy.D.* (Somerville, MA)

Traumatic events can affect a patient in many ways. One powerful — though often subtle — effect of trauma entails a disturbance of meaning. A traumatic experience may put into question all that one has held to be foundational and true. We present the case of a young woman who seeks therapy after the traumatic ending of a relationship, brought on by her partner's simultaneous disclosure of disturbing sexual interests and his sudden religious conversion. In the wake of this crisis, the patient feels that her own system of meaning has been destroyed. Mastering the devastation in therapy, the patient gains understanding of her own and others' minds; deals with issues of responsibility for herself and others; and turns this crisis into a growth-enhancing, self-defining experience.

After attending this session, participants should be able to: 1) Articulate how traumatic experience can affect meaning-making; 2) Consider how listening for existential and spiritual issues can inform a psychodynamic treatment.

9:00 a.m.-12:00 noon

Panel IV: How To Help Get Stuck Analyses Unstuck **CEC**

Chair &

Discussant: Rosemary H. Balsam, M.D. (New Haven, CT)

Presenters: Dionne R. Powell, M.D. (New York, NY)
Frances Arnold, Ph.D. (Cambridge, MA)
Stanley J. Coen, M.D. (New York, NY)

Reporter: Rebecca Chaplan, M.D. (New York, NY)

Three clinical vignettes of stuck analyses will show how each analyst struggled to help get patient and analyst unstuck. Presenters will highlight problems in the patient as well as in the analyst that interfered. They will describe what they had to manage in themselves and in their patient in order to move the treatment forward. Two discussants will offer their own perspectives on what was stuck in these treatments, in patient and analyst, and on what did and did not help get each treatment unstuck.

After attending this session, participants should be able to: 1) Describe interferences in their patients and in themselves that keep a treatment from moving forward; 2) Distinguish better regressive temptations in themselves that collude with their patient's willingness to remain disabled.

NAME BADGE POLICY

Name badges are required to attend all sections of the scientific program.

Your badge is your passport to attend the program sessions and the only way we can tell you have registered for the meeting.

Badges must be worn in plain sight to gain access to APsaA's meeting. Individuals who are not wearing their name badge or not wearing the correct name badge will be asked to properly register for the meeting.

CONTINUING PROFESSIONAL EDUCATION CREDIT

STATEMENT OF OBJECTIVES

The scientific sessions of the American Psychoanalytic Association's meetings are intended to bridge the practice gaps in the professional knowledge of attendees by exploring new and recent developments in research, theory, technique, clinical knowledge and by offering opportunities for the review of essential psychoanalytic knowledge. These sessions are designed for the continuing education of mental health professionals, including psychiatrists, psychologists, social workers, other mental health professionals; professionals-in-training, and master's level students; as well as post-doctoral mental health clinicians, nurses, teachers, professionals and academics in mental health and non-mental health disciplines.

This meeting offers a series of panel discussions, plenaries, symposia, discussion groups, clinical workshops, scientific papers, clinical presentations, and special programs for students including seminars, courses, and forums dedicated to professionals-in-training on topics of importance to psychoanalysis that have been designed to increase professional competence.

CONTINUING PROFESSIONAL EDUCATION CREDITS

Physicians

The American Psychoanalytic Association is accredited by the Accreditation Council for Continuing Medical Education to provide continuing medical education for physicians.

The American Psychoanalytic Association designates this Live Activity for a maximum of 49 AMA PRA Category 1 Credit(s)[™]. Physicians should claim only the credit commensurate with the extent of their participation in the activity.

Psychologists

The American Psychoanalytic Association is approved by the American Psychological Association to sponsor continuing education for psychologists. The American Psychoanalytic Association maintains responsibility for this program and its content.

MCEP Credits for California Psychologists

The California Psychological Association Accrediting Agency accepts credits earned from American Psychological Association-approved sponsors (the American Psychoanalytic Association is an APA-approved sponsor). California-licensed psychologists are, however, required to directly report the courses they have taken with APA sponsors. For information about the MCEP Credit Reporting Form, go to the web site at www.calpsychlink.org then click on the Accrediting Agency button.

National Association of Social Workers (NASW)

This program is Approved by the National Association of Social Workers (Approval #886504845-8856) for 49 clinical social work continuing education contact hours.

Exceptions to NASW

Please be aware that the following state boards do not accept the NASW National CE Approval Program. Please see the details below for approval of continuing education credits for social workers in these states.

California Board of Behavioral Sciences

The American Psychoanalytic Association's 101st Annual Meeting meets the qualifications for 49 hours of continuing education credit for MFTs and/or LCSWs as required by the California Board of Behavioral Sciences (Provider # 4394).

Michigan Department of Community Health, Licensing Division (MDCH)

Michigan social workers should use approval by the California board to obtain credit from the Michigan Board of Social Work. The following written statement, with the provider number, is required by the Michigan Board for documentation. "The American Psychoanalytic Association's 101st Annual Meeting meets the qualifications for 49 hours of continuing education credit for MFTs and/or LCSWs as required by the California Board of Behavioral Sciences (Provider # 4394)."

North Carolina Social Work Certification and Licensure Board (NCSWCLB)

The Board does not require pre-approval of organized training events attended by the social worker. However, the continuing education activity of social workers is subject to audit. Although CEU or attendance certificates should not be attached to the recertification affidavit, social workers will need to be able to provide upon request by the Board, verifiable proof of attendance and credit hours. North Carolina social workers should submit contact hours to the State Board for post approval.

State of West Virginia Board of Social Work Examiners (WVBSWE)

Note: WVBSWE does NOT participate in the NASW's National CE Approval Program.

West Virginia social workers should submit contact hours to the State Board for post-meeting approval.

IMPORTANT DISCLOSURE INFORMATION FOR ALL LEARNERS:

None of the planners and presenters of this CME program have any relevant financial relationships to disclose unless specifically noted.

APsAA OFFICERS, PROGRAM COMMITTEE AND STAFF

OFFICERS

Warren R. Procci, M.D.	President
Robert L. Pyles, M.D.	President-Elect
Beth J. Seelig, M.D.	Secretary
William A. Myerson, Ph.D.	Treasurer

BOARD ON PROFESSIONAL STANDARDS

Colleen L. Carney, Ph.D.	Chair, Board on Professional Standards
Lee I. Ascherman, M.D.	Secretary, Board on Professional Standards

PROGRAM COMMITTEE



Kimberlyn Leary, Ph.D.,
ABPP, *Chair*

Sharon Alperovitz, M.S.W.
Kehinde A. Ayeni, M.D.
Rosemary H. Balsam, M.D.
Brenda Bauer, Psy.D.
Sharon Blum, Ph.D.
Deborah L. Cabaniss, M.D.
Irene Cairo, M.D.
Julio G. Calderon, M.D.
Philip Cheifetz, M.D.
(*Rep. Canadian Psa. Society*)
Nancy J. Chodorow, Ph.D.

Phoebe A. Cirio, M.S.W., LCSW
Stanley J. Coen, M.D.
Henry J. Friedman, M.D.
Lawrence Friedman, M.D.
Glen O. Gabbard, M.D.
Melinda Gellman, Ph.D.
Peter L. Goldberg, Ph.D.
Gary Grossman, Ph.D.
Margaret-Ann Hanly, Ph.D.*
James H. Hansell, Ph.D.
Dorothy E. Holmes, Ph.D.
Christine C. Kieffer, Ph.D.
Nancy Kulish, Ph.D.
Joseph D. Lichtenberg, M.D.
Donald B. Moss, M.D.
Warren S. Poland, M.D.
Alan Pollack, M.D.

Steven Roose, M.D.
Marie G. Rudden, M.D.
Jennifer Stuart, Ph.D.
Stuart W. Twemlow, M.D.
Joan Wheelis, M.D.
Richard B. Zimmer, M.D.
Aneil M. Shirke, M.D., Ph.D.
(*Continuing Education Liaison*)
Steven T. Levy, M.D. (*Ex Officio*)
K. Lynne Moritz, M.D. (*PPRS Liaison*)

**indicates non member*

Disclosure: *Dr. Steven Roose has received honoraria from Orexigen Therapeutics, Inc. and Medtronic.*

STAFF

Dean K. Stein	Executive Director
Extension 30, deankstein@apsa.org	
Chris Broughton	Continuing Education & Meetings Registration Manager
Extension 19, cbroughton@apsa.org	
Brian Canty	Manager, Computer Information Services
Extension 17, bcanty@apsa.org	
Sherkima Edwards	Accounts Receivable Clerk
Extension 15, sedwards@apsa.org	
Tina Faison	Administrative Assistant to Executive Director
Extension 23, tfaison@apsa.org	
Carolyn Gatto	Scientific Program & Meetings Director
Extension 20, cgatto@apsa.org	
James Guimaraes	Fellowship and Program Coordinator
Extension 12, jguimaraes@apsa.org	
Stephanie Kunzmann	Assistant to the Scientific Program & Meetings Director
Extension 28, meetadmin@apsa.org	
Geralyn Lederman	Director of Public Affairs
Extension 29, glederman@apsa.org	
Johannes Neuer	Web Producer
jneuer@apsa.org	
Nerissa Steele-Browne	Manager, Accounting Department
Extension 16, nsteele@apsa.org	
Debra Steinke Wardell	Manager, Education and Membership Services
Extension 26, dsteinke@apsa.org	

PROGRAM PARTICIPANTS

A

Aisha Abbasi, M.D.	28
Graciela Abelin-Sas, M.D.	21
Anne J. Adelman, Ph.D.	13
Lou Agosta, Ph.D.	28
Monisha C. Akhtar, Ph.D.	26
Salman Akhtar, M.D.	24, 28
Carlos Almeida, M.D.	16
Charles Amrhein, Psy.D.	8
James William Anderson, Ph.D.	7
Sydney Anderson, Ph.D.	17
Winston Anderson, Psy.D.	14
Jonathan Arden, M.D.	23
Frances Arnold, Ph.D.	8, 29
Lee Ascherman, M.D.	11
Paula G. Atkeson, Ph.D.	6
Kehinde A. Ayeni, M.D.	26

B

Bernard W. Bail, M.D.	5
Rosemary H. Balsam, M.D.	29
Andres Barkil-Oteo, M.D.	21
Ralph Beaumont, M.D.	14, 16
Nancy Beckman, Ph.D.	18
Stephen B. Bernstein, M.D.	15, 20
Homi K. Bhabha, D.Phil	24
Mia W. Biran, Ph.D.	17
Jerome Blackman, M.D.	20
Kaye Bock, M.D.	18
Melvin Bornstein, M.D.	15, 20
Deisy C. Boscan, Ph.D.	16, 19
Kelly M. Bradham, Ph.D.	11
Lee D. Brauer, M.D.	25
William H. Braun, Psy.D.	6, 15
Elizabeth Brett, Ph.D.	4
R. Curtis Bristol, M.D.	14, 18, 21
Stephanie Brody, Psy.D.	5, 8
N. Lynn Buell, MSSW	14

C

Irene Cairo, M.D.	9, 18
Vera J. Camden, Ph.D.	18
Russell Carr, M.D.	13
Elizabeth Castellon, MSW	24

Rebecca Chaplan, M.D.	29
Elisa Cheng, M.D.	29
Umi Chong, Psy.D.	29
Phoebe A. Cirio, M.S.W., LCSW	11, 16
Norman A. Clemens, M.D.	20
Stanley J. Coen, M.D.	28, 29
Gilbert Cole, Ph.D.	26
Joseph P. Collins, D.O.	7
Steven Cooper, Ph.D.	9
Thetis Cromie, D.Min., Ph.D.	16

D

Hilli Dagony-Clark, Psy.D.	10, 26
Mary Davis, M.D.	16
Todd Davison, M.D.	18
Darren Del Castillo, Ph.D.	8
Robin A. Deutsch, Ph.D.	16
David R. Dietrich, Ph.D.	13
John DiGaetani, Ph.D.	14
Marie Dunn, LICSW, J.D.	19
Peter Dunn, M.D.	10
Ilene Dyller, Ph.D.	16

E

M. Hossein Etezady, M.D.	16
--------------------------	----

F

Theodore Fallon, M.D., M.P.H.	16
James Fisch, M.D.	29
Charles P. Fisher, M.D.	19, 27
George G. Fishman, M.D.	19
Cary D. Friedman, M.D.	10
Henry J. Friedman, M.D.	23, 25
Richard Fritsch, Ph.D.	26

G

Glen O. Gabbard, M.D.	22
Robert M. Galatzer-Levy, M.D.	15
Benjamin Garber, M.D.	26
Kim Gele, Ph.D.	6
Sharmin Ghaznavi, M.D., Ph.D.	24
Dale Gody, Ph.D.	9
Arnold Goldberg, M.D.	12
Steven H. Goldberg, M.D.	19

Michael I. Good, M.D.	5
Richard M. Gottlieb, M.D.	22
Prudence Gourguechon, M.D.	13
Laurie Gray, M.D.	21
Sheila Hafter Gray, M.D.	25
Fred L. Griffin, M.D.	6, 20
Michael D. Groat, Ph.D.	8, 27
Gary Grossman, Ph.D.	26
Ethan M. Grumbach, Ph.D.	6, 10, 15
Dorothy T. Grunes, M.D.	12
Jerome M. Grunes, M.D.	12

H

Patrick Haggard, M.D.	10, 15
Jane S. Hall, LCSW, FIPA	16, 20
Paula J. Hamm, M.A., LPC	4
Adrienne Harris, Ph.D.	24
David Hershey, M.D.	4, 7
Richard K. Hertel, Ph.D.	11
Irwin Hoffman, Ph.D.	9
Deanna Holtzman, Ph.D.	10
Holly Friedman Housman, LICSW	19
Peggy B. Hutson, M.D.	28

J

Lauren Jacker, M.D.	22
Daniel H. Jacobs, M.D.	4
Sarah Juul, M.D.	8

K

Judy L. Kantrowitz, Ph.D.	19
Marcia Kaplan, M.D.	16, 27
Navah C. Kaplan, Ph.D.	16, 22
Mae E. Kastor, M.S.W.	13
Adele Kaufman, LCSW	4
M. Sagman Kayatekin, M.D.	8
Maurine Kelly, Ph.D.	16
Patrick J. Kennedy	23
Christine Kieffer, Ph.D.	10
Aileen D. Kim, M.D.	20
Edward Kohn, M.D.	17
Norman V. Kohn, M.D.	19, 22
Peter Kotcher, M.D.	24
Nancy Kulish, Ph.D.	10

PROGRAM PARTICIPANTS

L

Mary J. Landy, M.D.	20
Melvin R. Lansky, M.D.	5, 10, 18
Jonathan Lear, Ph.D.	28
Geralyn Lederman, Ph.D.	6
Fred M. Levin, M.D.	19
Steven T. Levy, M.D.	22
Eva F. Lichtenberg, Ph.D.	12
Bonnie Litowitz, Ph.D.	11
Judith F. Logue, Ph.D.	6
Zvi Lothane, M.D.	5
Paul E. Lynch, M.D.	26

M

Kerry Malawista, Ph.D.	13
Johanna Malone, Ph.D.	26
Mali A. Mann, M.D.	19, 26
Barbara F. Marcus, Ph.D.	10
Al Margulies, M.D.	28
Linda Marino, Ph.D.	9
Mary K. McCarthy, M.D.	8
Donald McDevitt, M.S., LCPC	6
Susan McNamara, M.D.	6, 10, 15, 26
Gerald A. Melchiodi, M.D.	22
Peter Mezan, Ph.D.	21
Lucia Minnerly-Vilella, Ph.D.	18
Paul W. Mosher, M.D.	20
Donald B. Moss, M.D.	24, 27, 28
Bill Myerson, Ph.D., M.B.A.	12

N

Joanne Naegele, M.A., LPCC	11
Heidi J. Nast, Ph.D.	15
Kenneth Newman, M.D.	21
Malkah Notman, M.D.	19
Kerry Kelly Novick	26

P

Jonathan Palmer, M.D.	15, 20
Charles Parks, Ph.D.	4
Jamie Pasquale, Psy.D.	13
Stefan A. Pasternack, M.D.	14
Robert A. Paul, Ph.D.	18, 24

Vivian Blotnick Pender, M.D.	11, 18
Harry Penn, M.D.	28
Carmela Perez, Ph.D.	24
Alison Phillips, M.D.	9
Sidney H. Phillips, M.D.	8, 24
Marcia Polansky, M.S.W., Sc.D.	13
Alan Pollack, M.D.	9
Dionne R. Powell, M.D.	29
Monroe Pray, M.D.	18
Daniel Prezant, Ph.D.	10
Warren R. Procci, M.D.	22, 23, 25
James C. Pyles, Esq.	23
Robert Lindsay Pyles, M.D.	22

Q

Danielle Quinodoz, Mme	9
-----------------------------	---

R

Robin L. Rayford, M.A.	13
Anne Redlich, LCSW	22
Carol Reichenthal, Ph.D.	6, 13
Joseph Reppen, Ph.D.	5
Arlene K. Richards, Ed.D.	7, 11, 14, 20
Arnold D. Richards, M.D.	25
Shelley Rockwell, Ph.D.	17
Arthur L. Rosenbaum, M.D.	11, 15, 20
Sally Rosenberg, D.O.	27
Ruth Rosines, M.S.W.	17
Elizabeth Rottenberg, Ph.D.	22
Samuel Rubin, M.D.	11
Marie Rudden, M.D.	23, 28
Peter L. Rudnytsky, Ph.D., LCSW	7
Gabriel Ruiz, M.A., LCPC	6

S

Avgi Saketopoulou, Psy.D.	24
Jose Saporta, M.D.	9
Anne Schlachter, M.A.	17
Erika Schmidt, LCSW	14, 17
Anita G. Schmukler, D.O.	6
Evelyne Albrecht Schwaber, M.D.	16
Susan Sherkow, M.D.	16
Howard Shevrin, Ph.D.	27

Merton A. Shill, LLM, Ph.D.	12
Richard A. Shweder, Ph.D.	24
Shahrazad F. Siassi, Ph.D.	25, 28
Richard B. Simpson, M.D.	24
Bruce H. Sklarew, M.D.	21, 23, 28
Mark D. Smaller, Ph.D.	6, 15, 25
Brenda Solomon, M.D.	11
Rogelio A. Sosnik, M.D.	18
Lucille Spira, C.S.W., Ph.D.	20
Don Spivak, M.D.	6
Bhaskar Sripada, M.D.	26
Jeffrey Stern, Ph.D.	20
Mayer Subrin, M.D.	13
Frank Summers, Ph.D.	18
Richard Summers, M.D.	21
Nathan Moses Szajnberg, M.D.	25, 28

T

Rita Teusch, Ph.D.	9, 23
Nellie L. Thompson, Ph.D.	14
Arnold D. Tobin, M.D.	4, 12
David A. Turner, M.D.	8
Stuart W. Twemlow, M.D.	8, 22, 25
Phyllis Tyson, Ph.D.	10

V

Greer Van Dyck, M.A.	15
---------------------------	----

W

Peggy Ellen Warren, M.D.	15, 20f
Elizabeth Weinberg, M.D.	27
Loren Weiner, Ph.D.	5
Leo S. Weinstein, M.D.	11
Ben Weiss, MSW	26
Leon Wurmser, M.D.	5, 7

Y

Nitza Yarom, Ph.D.	17
Sharon Blum, Ph.D.	9

Z

Lynne M. Zeavin, Psy.D.	17, 26
Kathryn J. Zerbe, M.D.	14, 23
Richard B. Zimmer, M.D.	9



Attention Conference Attendees:

Take This Valuable Information Home with You!

- **Listen to the Sessions You Missed While On the Go**
- **Share the Knowledge and Insights with Friends and Colleagues**
- **Add the Audio of the Sessions to Your USB drive**
(easily transferred to your iPod, iPad and Computer)

Audio mp3s Only \$10 per session!

CDs Only \$15 per session (mail order only)

Get our “Green Special” Discount

**A Complete Set Audio mp3s
on a FREE USB drive!**

**Visit our Hungry Mind Recordings table in the Exhibit Area
for complete pricing and details!**

www.hungrymindrecordings.com • (510) 338-0950



InternationalPsychoanalysis.net

... a psychoanalytic slant on the world

"This is one of the best, if not the best, site for keeping up on Psychoanalysis, in all its variations, its history, its conflicts and its applications to the arts, politics and life in general."

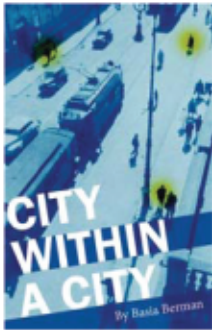
Now Available on . . .



www.IPBooks.net

Basia Berman

City Within a City



City Within a City was the secret diary written in Polish in 1944 when Basia (Baty) Berman, and her husband Adolf-Abraham Berman, lived on the Aryan side of Warsaw—the part designated by the Nazis for Polish Christians only—and led a secret network helping thousands of Jews to hide and survive.

"I would like to describe this state within a state, or rather, a city within a city, this most underground of all underground communities, whose members met with each other, worked and talked in the midst of population which didn't suspect anything; where every street, every coffee shop, every tram stop called to mind dozens of unique adventures. Every name was false, every word that was uttered carried a double meaning, and every telephone conversation was more encrypted than the secret diplomatic documents of embassies.

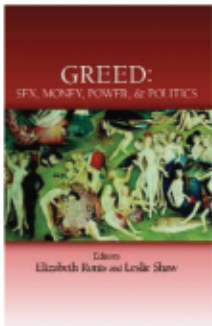
This historically important book may now be purchased online at www.IPBooks.net.

IPBOOKS.net

International Psychoanalytic Books

E. Ronis and L. Shaw, eds.

Greed: Sex, Money, Power & Politics

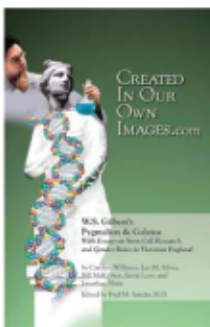


Greed was central to the recent American financial debacle. The debacle destroyed many trillions of dollars of wealth across the globe and vastly diminished the status of the United States as a model for economic life. Yet our understanding of greed and how it operates has remained primitive. Greed is, however, a desire; a desire for wealth and the trappings of wealth. Now, psychoanalysis has come to the rescue. Desires are what psychoanalysis is all about. In this fascinating collection of papers, we get insights and explanations not only of the phenomenon but of many of those at the heart of the debacle who appear to have been driven by greed.

—Marvin Zonis, Professor Emeritus, Booth School of Business, The University of Chicago,
Co-author of *Risk Rules: How Local Politics Threaten the Global Economy*

Fred Sander et al.

Created in Our Own Images.com



Revives a forgotten comedy of W.S. Gilbert (of Gilbert & Sullivan), *Pygmalion and Galatea* (1876). Pygmalion, a sculptor, has made numerous copies of his wife. One of them, Galatea, comes to life and falls in love with her creator. The characters find themselves in a social and ethical entanglement of comic proportions that must be resolved by the play's end. The play thus evokes cloning at the start of the 21st century, the roles of men and women in 19th-century Victorian England and the discovery of psychoanalysis in the 20th. Expert writers from fields as diverse as History, literature, psychology, the arts, and sciences discuss the implications of the play with speculation and commentary on the ethics and future of life in the "Age of the Genome."



PEP Archive 1 version 11 (1871-2011) is available now online!

Four NEW Journals will be included in PEP A1v11: **Psychoanalytic Social Work (2004 – 2011)**, **International Journal of Applied Psychoanalytic Studies (2004 – 2011)**, **Psychoanalytic Perspectives (2003 – 2011)**, and **Internationale Psychoanalyse (2006-2008)**,

This brings the total to FORTY-SIX journals now included in the PEP Archive. Content is searchable through 2011 and full text is available through 2008 to PEPWEB subscribers. Also included are 12 books from the APsaA Workshop Series and Monographs.

American Imago • American Journal of Psychoanalysis • Annual of Psychoanalysis • L'Annata Psicoanalitica Internazionale • L'Année Psychanalytique Internationale • Bulletin of the Anna Freud Centre • Canadian Journal of Psychoanalysis • Contemporary Psychoanalysis • Fort Da Studies • International Review of Psychoanalysis • **International Journal of Applied Psychoanalytic Studies (NEW)** • **Internationale Psychoanalyse (NEW)** • Italian Psychoanalytic Annual • Journal of Clinical Psychoanalysis • Journal of the American Academy of Psychoanalysis • Journal of the American Psychoanalytic Association • Journal of Analytical Psychology • Journal of Child Psychotherapy • Journal of Infant, Child and Adolescent Psychotherapy • Modern Psychoanalysis • Neuropsychoanalysis • Progress in Self Psychology • **Psychoanalytic Perspectives (NEW)** • Psychoanalytic Quarterly • Psychoanalytic Study of the Child • Psychoanalytic Dialogues • Psychoanalytic Inquiry • Psychoanalytic Psychology • **Psychoanalytic Social Work (NEW)** • Psychoanalysis and Contemporary Science • Psychoanalysis and Contemporary Thought • Psychoanalysis and History • Psychoanalytic Psychotherapy • Psychoanalytic Review • Revue Belge de Psychanalyse • Rivista di Psicoanalisi • Rivista Italiana di Psicoanalisi • Scandinavian Psychoanalytic Review • Studies in Gender and Sexuality • Bulletin of the American Psychoanalytic Association • Bulletin of the International Psychoanalytic Association

PEP A1v11 will also add LIVE SEARCH! A dynamic word wheel as you type will help you choose the right words to search. Live search statistics will give you instant feedback to help you specify just the right criteria to get exactly the articles you're looking for. You won't have to sift through a large number of results.

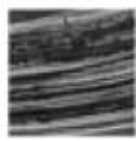
DVD PRICING		WEB SUBSCRIPTIONS
INDIVIDUALS	New customers: \$2,720*(Candidates \$1,650*) Existing customers: from \$300* depending on version of archive owned <u>DVD is version 9</u> *Discounted rates may be available by ordering on our online order site.	Initial fee for new customers: \$1,134 (Candidates \$734**) Initial fee for CD/DVD customers upgrading: from \$135 Annual subscription: \$135 ** To qualify, you must be a Full Time Student or Candidate in the first 4 years of analytic training still doing coursework. Verification of your current status is required from your school or institute.
PSYCHOANALYTIC & OTHER GROUPS	N/A	From \$60 per member for an everyone-on-the-roster solution
UNIVERSITIES & PUBLIC INSTITUTIONS	N/A	Initial fee: From \$5,500 to \$11,500 per annum depending on FTE Annual renewal: From \$2,000 to \$9,000 per annum depending on FTE

PEP Archive 1 version 11 (1871-2011) is available now online!

For further news and online discounted rates, go to <http://www.p-e-p.org>

Visit <http://www.pep-web.org> to search the PEP Archive and current content of some journals free of charge. (Access to full text requires a subscription)

PEP Sales and Customer Service: US (949) 496 7379



Frenkel & Company
International Insurance Brokers Est. 1878

Serving the
Professional Liability Insurance needs
of the American Psychoanalytic Association
since 1972

- Professional Liability
- Admitted (A +) Paper
- Business Insurance
- Personal Insurance including Homeowners/Automobile
- Directors & Officers
- Employment Practices Liability

Program Administrator
Margaret Church
201.356.3422
mchurch@frenkel.com

Frenkel & Company
Harborside Financial Center
601 Plaza 3 6th Floor
Jersey City, NJ 07311
201.356.3400

Read JAPA Online at japa.sagepub.com



EDITOR
Steven T. Levy, M.D.

j a p a

Journal of the American Psychoanalytic Association

APsaA Members receive preferred subscription rates that include online access. Subscribe today by calling (212) 752-0450, Ext 15.

The Journal of the American Psychoanalytic Association (JAPA) is the preeminent North American psychoanalytic scholarly journal. It is an invaluable, peer-reviewed resource for psychoanalysts, psychologists, psychiatrists, and other mental health professionals that publishes original articles, research, plenary presentations, panel reports, abstracts, commentaries, editorials and correspondence. In addition, the **JAPA Review of Books** provides in-depth reviews of recent literature.

JAPA is available online through the SAGE Journals Online platform. Your member subscription includes free online access with the following features:

- Full-text access back to Volume 1, Issue 1
- Free alerting services, including contents alerts, citation alerts, and RSS feeds
- Early online access to **JAPA** articles through Online First
- Monthly updates to the Most-Read and Most-Cited articles
- Free inter-journal reference linking
- JAPA Prize articles

Impact Factor: 0.881
Ranked: 4/13 in Psychology/Psychoanalysis • 83/110 in Psychiatry
Source: 2010 Journal Citation Reports® (Thomson Reuters, 2011)


www.sagepub.com


AMERICAN
PSYCHOANALYTIC
ASSOCIATION
www.apsa.org